

KANSAS CORPORATION COMMISSION
OIL & GAS CONSERVATION DIVISION

TEMPORARY ABANDONMENT WELL APPLICATION

OPERATOR: License#
Name:
Address 1:
Address 2:
City: State: Zip:
Contact Person:
Phone:
Contact Person Email:
Field Contact Person:
Field Contact Person Phone:

API No. 15-
Spot Description:
Sec. Twp. S. R.
GPS Location: Lat, Long
Datum: NAD27, NAD83, WGS84
County: Elevation:
Lease Name: Well #:
Well Type: Oil, Gas, OG, WSW, Other
SWD Permit #: ENHR Permit #:
Gas Storage Permit #:
Spud Date: Date Shut-In:

Table with 7 columns: Conductor, Surface, Production, Intermediate, Liner, Tubing. Rows include Size, Setting Depth, Amount of Cement, Top of Cement, Bottom of Cement.

Casing Fluid Level from Surface: How Determined? Date:
Casing Squeeze(s): to w / sacks of cement, to w / sacks of cement. Date:
Do you have a valid Oil & Gas Lease? Yes No
Depth and Type: Junk in Hole at Tools in Hole at Casing Leaks: Yes No Depth of casing leak(s):
Type Completion: ALT. I ALT. II Depth of: DV Tool: w / sacks of cement Port Collar: w / sack of cement
Packer Type: Size: Inch Set at: Feet
Total Depth: Plug Back Depth: Plug Back Method:

Geological Date:

Table with 4 columns: Formation Name, Formation Top, Formation Base, Completion Information. Rows 1 and 2.

UNDER PENALTY OF PERJURY I HEREBY ATTEST THAT THE INFORMATION CONTAINED HEREIN IS TRUE AND CORRECT TO THE BEST OF MY KNOWLEDGE

Submitted Electronically

Do NOT Write in This Space - KCC USE ONLY
Date Tested: Results: Date Plugged: Date Repaired: Date Put Back in Service:
Review Completed by: Comments:
TA Approved: Yes Denied Date:

Mail to the Appropriate KCC Conservation Office:

Table with 2 columns: Office Address, Phone. Rows for District Office #1, #2, #3, #4.

**General**

Well ID  
 Company  
 Operator  
 Lease Name  
 Elevation  
 Production Method  
 Dataset Description

Glenn Weir #1  
 Woolsey  
 Glenn Weir #1  
 0.00 ft  
 Rod Pump

Comment

**Surface Unit**

Manufacturer  
 Unit Class  
 Unit API Number  
 Measured Stroke Length  
 Rotation  
 Counter Balance Effect (Weights Level)  
 Weight Of Counter Weights

LUFKIN  
 Conventional  
 C-114-143-64  
 64,000 in  
 CW  
 - \* - Klb  
 2000 lb

**Prime Mover**  
 Motor Type  
 Rated HP  
 Run Time  
 MFG/Comment

Gas  
 14 HP  
 24 hr/day  
 - \* -

**Pump**

Plunger Diameter  
 Pump Intake Depth

1.125 in  
 4582.00 ft

**Polished Rod**

Polished Rod Diameter  
 1.250 in

**Tubulars**  
 Tubing OD  
 Casing OD  
 Average Joint Length  
 Anchor Depth  
 Kelly Bushing

2.375 in  
 4.500 in  
 31.380 ft  
 - \* - ft  
 10.00 ft

**Rod String**

Rod Type	Top Taper	Taper 2	Taper 3	Taper 4	Taper 5	Taper 6
D	- * -	- * -	- * -	- * -	- * -	- * -
Rod Length	4525.00	- * -	- * -	- * -	- * -	- * -
Rod Diameter	0.750	- * -	- * -	- * -	- * -	- * -
Rod Weight	7346.1	0.0	0.0	0.0	0.0	0.0

Total Rod Length  
 Total Rod Weight  
 Damp Up  
 Damp Down

4525  
 7346.11  
 0.04582  
 0.04582

**Conditions**

**Pressure**  
 Static BHP  
 Static BHP Method  
 Static BHP Date

- \* - psi (g)  
 - \* -  
 - \* -

**Production**  
 Oil Production  
 Water Production  
 Gas Production  
 Production Date

0 BBL/D  
 3.5 BBL/D  
 11.0 Mscf/D  
 10/18/2013

Producing BHP  
 Producing BHP Method  
 Producing BHP Date  
 Formation Depth

139.4 psi (g)  
 Acoustic  
 11/05/2021  
 4561.00 ft

**Temperatures**  
 Surface Temperature  
 Bottomhole Temperature

70 deg F  
 150 deg F

**Surface Producing Pressures**  
 Tubing Pressure  
 Casing Pressure

100.0 psi (g)  
 20.0 psi (g)

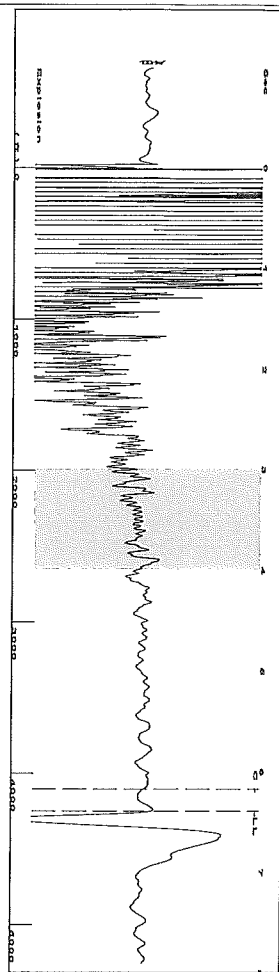
**Fluid Properties**  
 Oil API  
 Water Specific Gravity

40 deg API  
 1.05 Sp.Gr.H2O

**Casing Pressure Buildup**  
 Change in Pressure  
 Over Change in Time

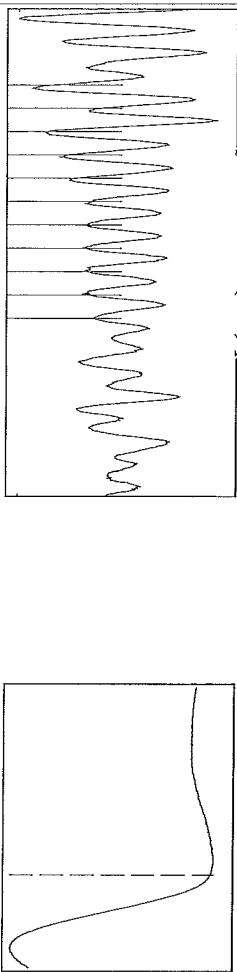
0.2 psi  
 2.00 min

Group: MyWells Well: Glenn Weir #1 (acquired on: 11/05/21 11:50:33)



Filter Type High Pass Automatic Collar Count Yes  
 Manual Acoustic Velocity 1307.5 ft/s Manual JTS/sec 20.8333  
 Time 6.39 sec  
 Joints 135.381 Jts  
 Depth 4248.27 ft

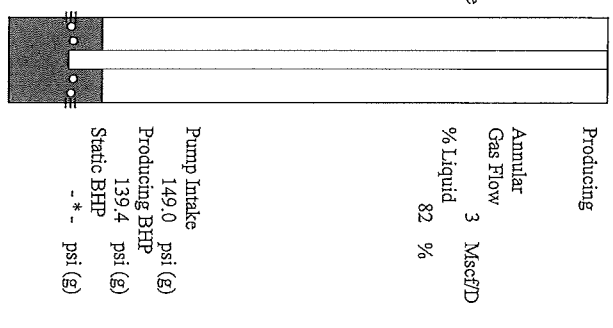
[ 3.0 to 4.0 (Sec) ]



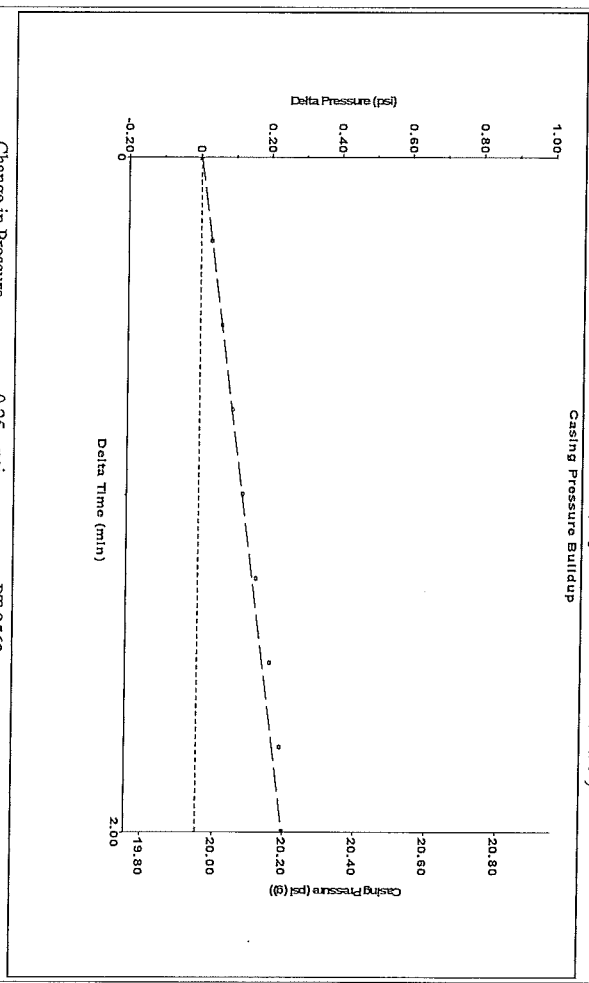
Analysis Method: Automatic

Group: MyWells Well: Glenn Weir #1 (acquired on: 11/05/21 11:50:33)

Production	Potential	Casing Pressure	Producing
Oil 0	-* - BBL/D	20.0 psi (E)	Annular
Water 3.5	-* - BBL/D	Casing Pressure Buildup	Gas Flow
Gas 11.0	-* - Mscf/D	0.2 psi	3 Mscf/D
IPR Method	Vogel	Gas/Liquid Interface Pressure	% Liquid
PBHP/SBHP	-* -	23.5 psi (E)	82 %
Production Efficiency	0.0	Liquid Level Depth	
Oil 40 deg API		4248.27 ft	
Water 1.05 Sp.Gr.H2O		Pump Intake Depth	
Gas 0.68 Sp.Gr.AIR		4582.00 ft	
Acoustic Velocity	1329.66 ft/s	Formation Depth	
		4561.00 ft	
Formation Submergence			
Total Gaseous Liquid Column HT (TVDD)		334 ft	
Equivalent Gas Free Liquid HT (TVDD)		276 ft	
Acoustic Test			

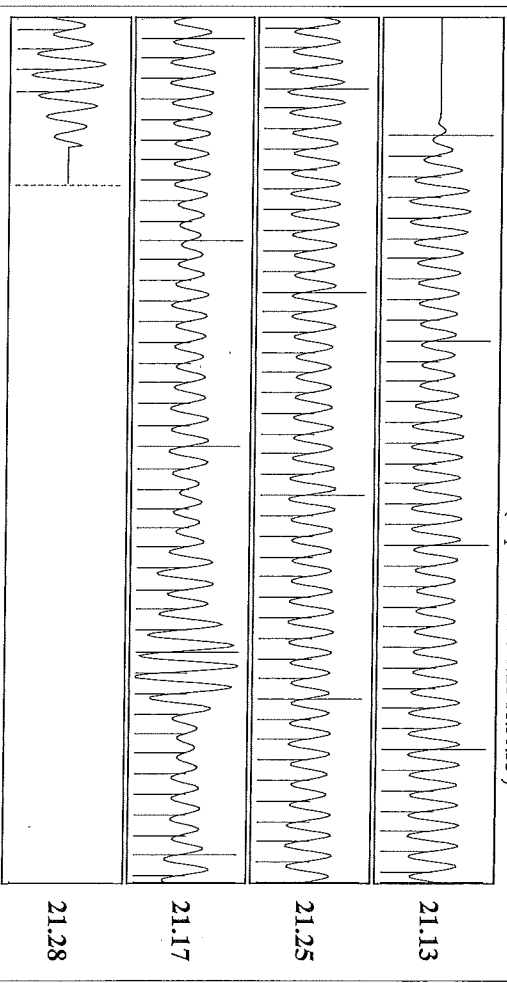


Group: MyWells Well: Glenn Weir #1 (acquired on: 11/05/21 11:50:33)



Change in Pressure 0.25 psi PT 9563  
 Change in Time 2.00 min Range  
 0 - ? psi

Group: MyWells Well: Glenn Weir #1 (acquired on: 11/05/21 11:50:33)



Acoustic Velocity	1329.66 ft/s	Joints counted	125
Joints Per Second	21.1864 Jts/sec	Joints to liquid level	135.381
Depth to liquid level	4248.27 ft	Filter Width	18.8333
Automatic Collar Count	Yes	Time to 1st Collar	0.272
			22.8333
			6.172

November 10, 2021

DEAN PATTISSON  
Woolsey Operating Company, LLC  
125 N MARKET STE 1000  
WICHITA, KS 67202-1729

Re: Temporary Abandonment  
API 15-007-20778-00-00  
WEIR, GLENN 1-35  
NE/4 Sec.35-33S-11W  
Barber County, Kansas

Dear DEAN PATTISSON:

"Your temporary abandonment (TA) application for the well listed above has been approved. In accordance with K.A.R. 82-3-111 the TA status of this well will expire 11/10/2022.

- \* If you return this well to service or plug it, please notify the District Office.
- \* If you sell this well you are required to file a Transfer of Operator form, T-1.
- \* If the well will remain temporarily abandoned, you must submit a new TA application, CP-111, before 11/10/2022.

You may contact me at the number above if you have questions.

Very truly yours,

Michael Maier"