

KANSAS CORPORATION COMMISSION
OIL & GAS CONSERVATION DIVISION

Form must be Typed
Form must be signed

TEMPORARY ABANDONMENT WELL APPLICATION

All blanks must be complete

OPERATOR: License#
Name:
Address 1:
Address 2:
City: State: Zip:
Contact Person:
Phone:
Contact Person Email:
Field Contact Person:
Field Contact Person Phone:

API No. 15-
Spot Description:
Sec. Twp. S. R.
feet from N / S Line of Section
feet from E / W Line of Section
GPS Location: Lat: , Long:
Datum: NAD27 NAD83 WGS84
County: Elevation: GL KB
Lease Name: Well #:
Well Type: Oil Gas OG WSW Other:
SWD Permit #: ENHR Permit #:
Gas Storage Permit #:
Spud Date: Date Shut-In:

Table with 7 columns: Conductor, Surface, Production, Intermediate, Liner, Tubing. Rows include Size, Setting Depth, Amount of Cement, Top of Cement, Bottom of Cement.

Casing Fluid Level from Surface: How Determined? Date:
Casing Squeeze(s): to w / sacks of cement, to w / sacks of cement. Date:
Do you have a valid Oil & Gas Lease? Yes No
Depth and Type: Junk in Hole at Tools in Hole at Casing Leaks: Yes No Depth of casing leak(s):
Type Completion: ALT. I ALT. II Depth of: DV Tool: w / sacks of cement Port Collar: w / sack of cement
Packer Type: Size: Inch Set at: Feet
Total Depth: Plug Back Depth: Plug Back Method:

Geological Data:

Table with 4 columns: Formation Name, Formation Top, Formation Base, Completion Information. Rows 1 and 2.

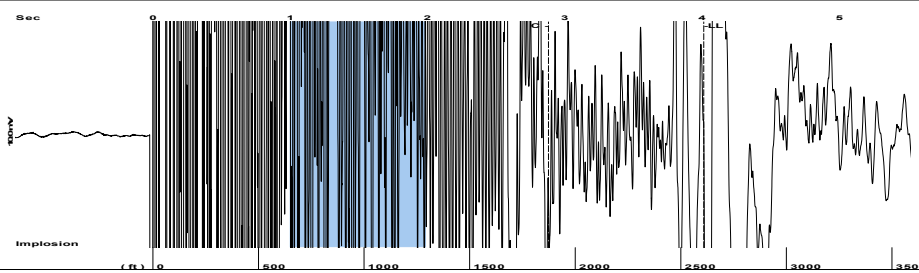
UNDER PENALTY OF PERJURY I HEREBY ATTEST THAT THE INFORMATION CONTAINED HEREIN IS TRUE AND CORRECT TO THE BEST OF MY KNOWLEDGE

Submitted Electronically

Do NOT Write in This Space - KCC USE ONLY
Date Tested: Results: Date Plugged: Date Repaired: Date Put Back in Service:
Review Completed by: Comments:
TA Approved: Yes Denied Date:

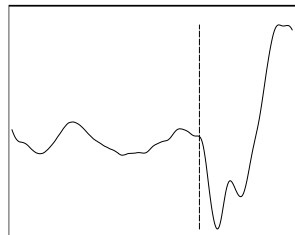
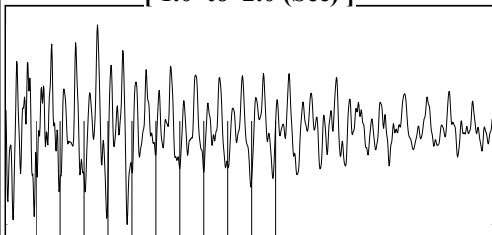
Mail to the Appropriate KCC Conservation Office:

Table with 3 columns: District Office, Address, Phone. Rows for District Office #1, #2, #3, #4.



Filter Type High Pass Automatic Collar Count Yes Time 4.012 sec
 Manual Acoustic Veloc 1288.62 ft/s Manual JTS/sec 20.3252 Joints 82.2895 Jts
 Depth 2608.58 ft

[1.0 to 2.0 (Sec)]

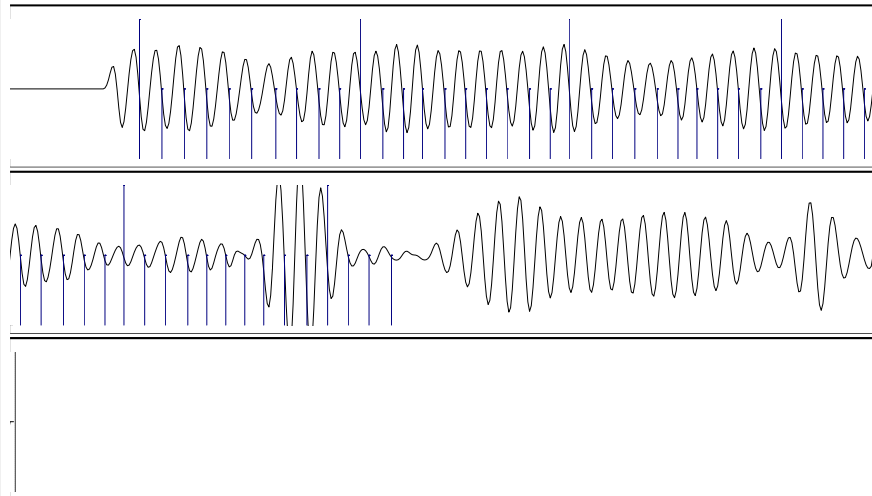
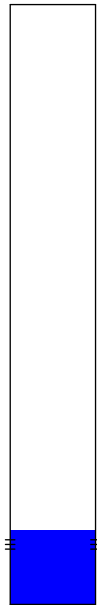


Analysis Method: Automatic

NO PRESSURE DATA AVAILABLE

Change in Pressure -18.21 psi PT12098
 Range 0 - ? psi
 Change in Time 0.25 min

| | | | |
|--------------------------------------|------------------|-------------------------------|------------------------------|
| Production | Potential | Casing Pressure | Producing |
| Current | | 87.1 psi (g) | |
| Oil - *- | - *- BBL/D | Casing Pressure Buildup | Annular Gas Flow - *- Mscf/D |
| Water - *- | - *- BBL/D | -18.212 psi | % Liquid 100 % |
| Gas - *- | - *- Mscf/D | 0.25 min | |
| | | Gas/Liquid Interface Pressure | |
| | | - *- psi (g) | |
| IPR Method | Vogel | Liquid Level Depth | |
| PBHP/SBHP | - *- | 2608.58 ft | |
| Production Efficiency | 0.0 | Pump Intake Depth | |
| | | - *- ft | |
| Oil 40 deg.API | | Formation Depth | |
| Water 1.05 Sp.Gr.H2O | | 2688.00 ft | |
| Gas 0.70 Sp.Gr.AIR | | | |
| Acoustic Velocity 1300.39 ft/s | | | |
| | | | |
| Formation Submergence | | | |
| Total Gaseous Liquid Column HT (TVD) | - *- ft | | |
| Equivalent Gas Free Liquid HT (TVD) | - *- ft | | |
| Acoustic Test | | | |



| | | | |
|------------------------|-----------------|------------------------|-----------------|
| Acoustic Velocity | 1300.39 ft/s | Joints counted | 53 |
| Joints Per Second | 20.5108 jts/sec | Joints to liquid level | 82.2895 |
| Depth to liquid level | 2608.58 ft | Filter Width | 18.3252 22.3252 |
| Automatic Collar Count | Yes | Time to 1st Collar | 0.3 2.884 |

November 10, 2021

Jose Reyes
American Warrior, Inc.
PO BOX 399
GARDEN CITY, KS 67846-0399

Re: Temporary Abandonment
API 15-055-20481-00-00
MCGRAW 1
SE/4 Sec.09-26S-31W
Finney County, Kansas

Dear Jose Reyes:

"Your temporary abandonment (TA) application for the well listed above has been approved. In accordance with K.A.R. 82-3-111 the TA status of this well will expire 11/10/2022.

- * If you return this well to service or plug it, please notify the District Office.
- * If you sell this well you are required to file a Transfer of Operator form, T-1.
- * If the well will remain temporarily abandoned, you must submit a new TA application, CP-111, before 11/10/2022.

You may contact me at the number above if you have questions.

Very truly yours,

Michael Maier"