

KANSAS CORPORATION COMMISSION
OIL & GAS CONSERVATION DIVISION

TEMPORARY ABANDONMENT WELL APPLICATION

OPERATOR: License#
Name:
Address 1:
Address 2:
City: State: Zip:
Contact Person:
Phone:
Contact Person Email:
Field Contact Person:
Field Contact Person Phone:

API No. 15-
Spot Description:
Sec. Twp. S. R.
GPS Location: Lat: Long:
Datum: NAD27 NAD83 WGS84
County: Elevation:
Lease Name: Well #:
Well Type: Oil Gas OG WSW Other:
SWD Permit #: ENHR Permit #:
Gas Storage Permit #:
Spud Date: Date Shut-In:

Table with 7 columns: Conductor, Surface, Production, Intermediate, Liner, Tubing. Rows include Size, Setting Depth, Amount of Cement, Top of Cement, Bottom of Cement.

Casing Fluid Level from Surface: How Determined? Date:
Casing Squeeze(s): to w / sacks of cement, to w / sacks of cement. Date:
Do you have a valid Oil & Gas Lease? Yes No
Depth and Type: Junk in Hole at Tools in Hole at Casing Leaks: Yes No Depth of casing leak(s):
Type Completion: ALT. I ALT. II Depth of: DV Tool: w / sacks of cement Port Collar: w / sack of cement
Packer Type: Size: Inch Set at: Feet
Total Depth: Plug Back Depth: Plug Back Method:

Geological Data:

Table with 4 columns: Formation Name, Formation Top, Formation Base, Completion Information. Rows 1 and 2.

UNDER PENALTY OF PERJURY I HEREBY ATTEST THAT THE INFORMATION CONTAINED HEREIN IS TRUE AND CORRECT TO THE BEST OF MY KNOWLEDGE

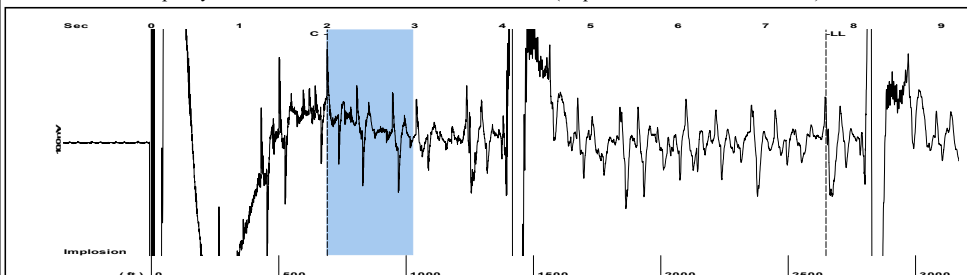
Submitted Electronically

Do NOT Write in This Space - KCC USE ONLY
Date Tested: Results: Date Plugged: Date Repaired: Date Put Back in Service:
Review Completed by: Comments:
TA Approved: Yes Denied Date:

Mail to the Appropriate KCC Conservation Office:

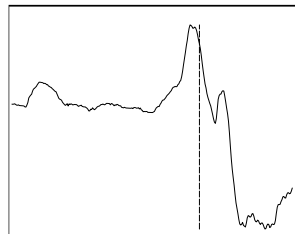
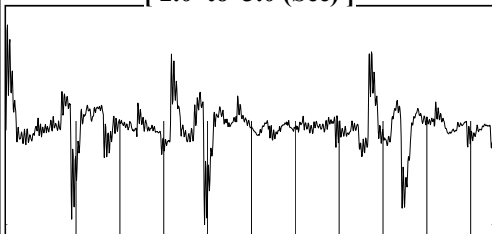
Table with 3 columns: District Office #, Address, Phone. Rows 1-4.

Group: MyWells Well: JEFECO-HOLSTEAD #1-35 (acquired on: 11/02/21 13:02:12 )



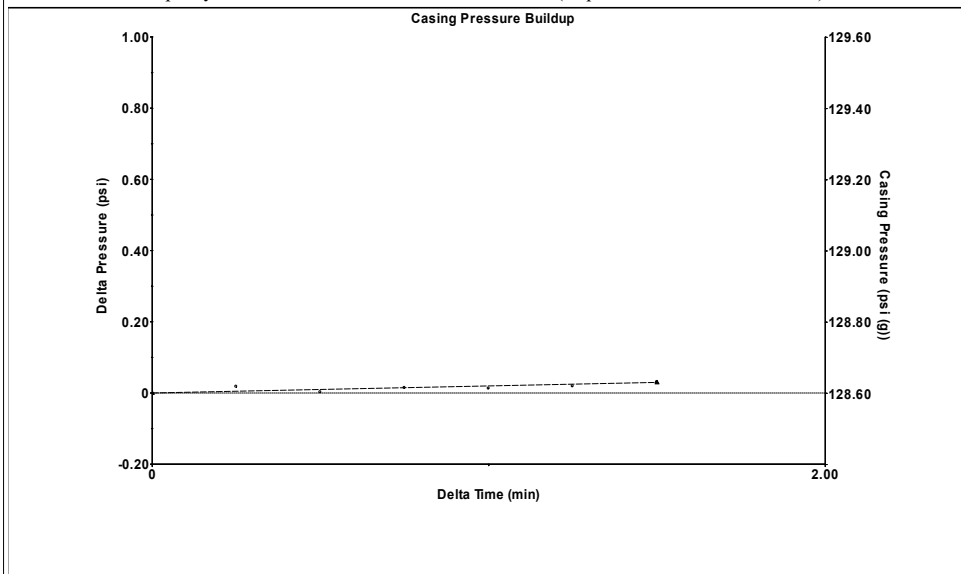
Filter Type High Pass Automatic Collar Count Yes Time 7.686 sec  
 Manual Acoustic Veloc 703.663 ft/s Manual JTS/sec 11.0988 Joints 83.5435 Jts  
 Depth 2648.33 ft

[ 2.0 to 3.0 (Sec) ]



Analysis Method: Automatic

Group: MyWells Well: JEFECO-HOLSTEAD #1-35 (acquired on: 11/02/21 13:02:12 )

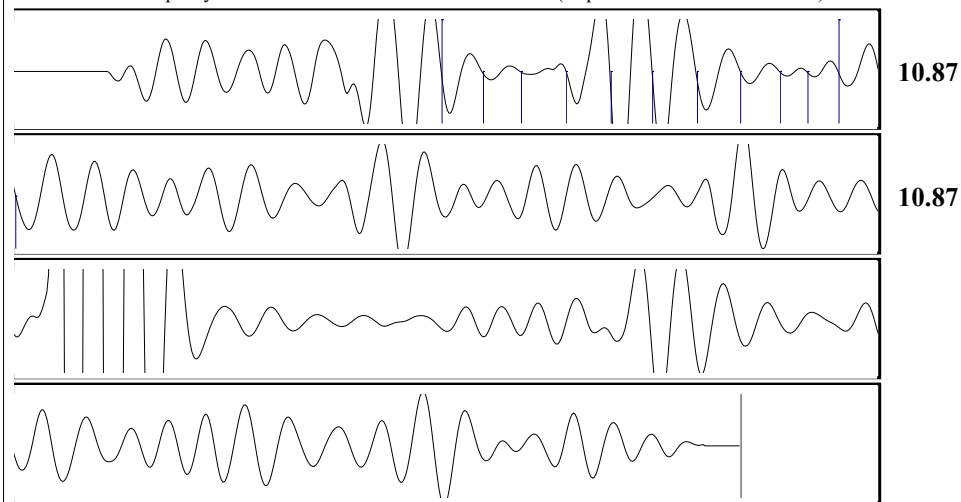


Change in Pressure 0.03 psi PT12098  
 Change in Time 1.50 min Range 0 - ? psi

Group: MyWells Well: JEFECO-HOLSTEAD #1-35 (acquired on: 11/02/21 13:02:12 )

Production Current	Potential	Casing Pressure	Producing
Oil - *-	- *- BBL/D	128.6 psi (g)	Annular Gas Flow - *- Mscf/D
Water - *-	- *- BBL/D	Casing Pressure Buildup 0.030 psi	% Liquid 100 %
Gas - *-	- *- Mscf/D	1.50 min	
IPR Method	Vogel	Gas/Liquid Interface Pressure - *- psi (g)	
PBHP/SBHP	- *-	Liquid Level Depth 2648.33 ft	
Production Efficiency	0.0	Pump Intake Depth - *- ft	
Oil 40 deg.API		Formation Depth 3120.00 ft	
Water 1.05 Sp.Gr.H2O			
Gas 1.23 Sp.Gr.AIR			
Acoustic Velocity 689.13 ft/s			
Formation Submergence			
Total Gaseous Liquid Column HT (TVD) - *- ft			
Equivalent Gas Free Liquid HT (TVD) - *- ft			
TA			

Group: MyWells Well: JEFECO-HOLSTEAD #1-35 (acquired on: 11/02/21 13:02:12 )



Acoustic Velocity 689.13 ft/s Joints counted 11  
 Joints Per Second 10.8696 jts/sec Joints to liquid level 83.5435  
 Depth to liquid level 2648.33 ft Filter Width 9.09878 13.0988  
 Automatic Collar Count Yes Time to 1st Collar 0.992 2.004

Conservation Division  
District Office No. 1  
210 E. Frontview, Suite A  
Dodge City, KS 67801



Phone: 620-682-7933  
<http://kcc.ks.gov/>

Andrew J. French, Chairperson  
Dwight D. Keen, Commissioner  
Susan K. Duffy, Commissioner

Laura Kelly, Governor

November 10, 2021

Jose Reyes  
American Warrior, Inc.  
PO BOX 399  
GARDEN CITY, KS 67846-0399

Re: Temporary Abandonment  
API 15-055-21849-00-01  
JEFCO-HOLSTEAD 1-35  
SW/4 Sec.35-22S-33W  
Finney County, Kansas

Dear Jose Reyes:

"Your temporary abandonment (TA) application for the well listed above has been approved. In accordance with K.A.R. 82-3-111 the TA status of this well will expire 11/10/2022.

- \* If you return this well to service or plug it, please notify the District Office.
- \* If you sell this well you are required to file a Transfer of Operator form, T-1.
- \* If the well will remain temporarily abandoned, you must submit a new TA application, CP-111, before 11/10/2022.

You may contact me at the number above if you have questions.

Very truly yours,

Michael Maier"