

KANSAS CORPORATION COMMISSION
OIL & GAS CONSERVATION DIVISION

Form must be Typed
Form must be signed

TEMPORARY ABANDONMENT WELL APPLICATION

All blanks must be complete

OPERATOR: License#
Name:
Address 1:
Address 2:
City: State: Zip:
Contact Person:
Phone:
Contact Person Email:
Field Contact Person:
Field Contact Person Phone:

API No. 15-
Spot Description:
Sec. Twp. S. R.
GPS Location: Lat: Long:
Datum: NAD27 NAD83 WGS84
County: Elevation:
Lease Name: Well #:
Well Type: Oil Gas OG WSW Other:
SWD Permit #: ENHR Permit #:
Gas Storage Permit #:
Spud Date: Date Shut-In:

Table with 7 columns: Conductor, Surface, Production, Intermediate, Liner, Tubing. Rows include Size, Setting Depth, Amount of Cement, Top of Cement, Bottom of Cement.

Casing Fluid Level from Surface: How Determined? Date:
Casing Squeeze(s): to w / sacks of cement, to w / sacks of cement. Date:
Do you have a valid Oil & Gas Lease? Yes No
Depth and Type: Junk in Hole at Tools in Hole at Casing Leaks: Yes No Depth of casing leak(s):
Type Completion: ALT. I ALT. II Depth of: DV Tool: w / sacks of cement Port Collar: w / sack of cement
Packer Type: Size: Inch Set at: Feet
Total Depth: Plug Back Depth: Plug Back Method:

Geological Data:

Table with 4 columns: Formation Name, Formation Top, Formation Base, Completion Information. Rows 1 and 2.

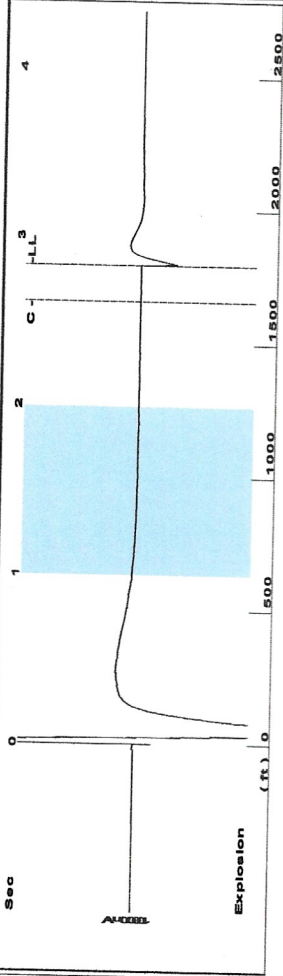
UNDER PENALTY OF PERJURY I HEREBY ATTEST THAT THE INFORMATION CONTAINED HEREIN IS TRUE AND CORRECT TO THE BEST OF MY KNOWLEDGE

Submitted Electronically

Do NOT Write in This Space - KCC USE ONLY
Date Tested: Results: Date Plugged: Date Repaired: Date Put Back in Service:
Review Completed by: Comments:
TA Approved: Yes Denied Date:

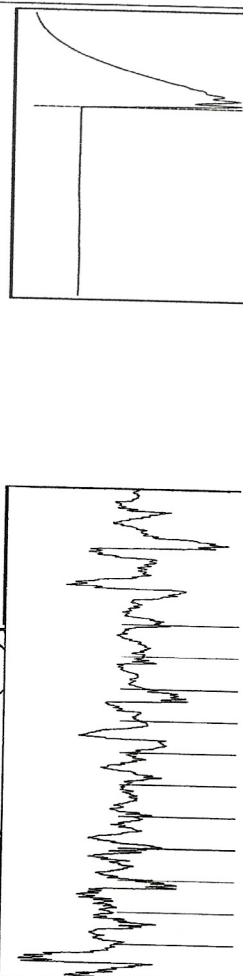
Mail to the Appropriate KCC Conservation Office:

Table with 3 columns: District Office, Address, Phone. Rows for District Office #1, #2, #3, #4.



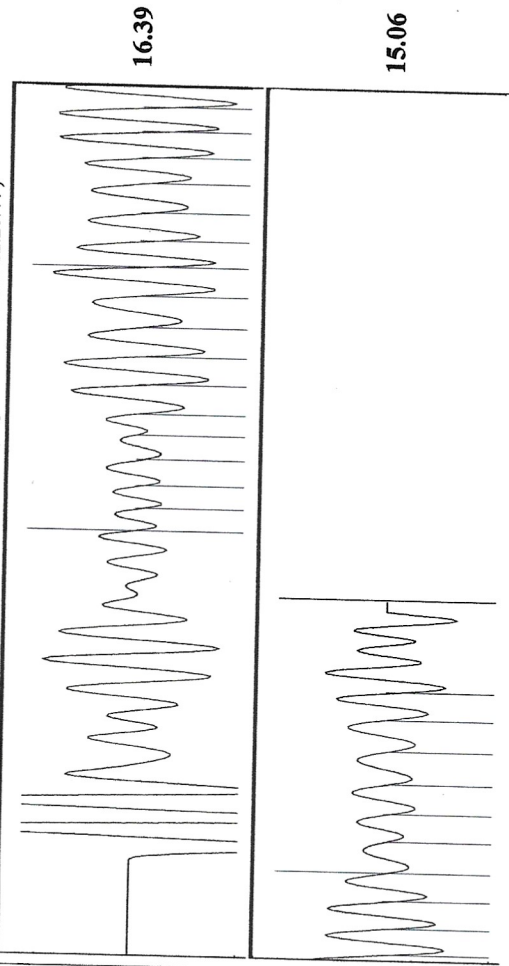
Filter Type High Pass
 Manual Acoustic Veloc 1226.99 ft/s
 Automatic Collar Count Yes
 Manual JTS/sec 15.3374

[1.0 to 2.0 (Sec)]



Analysis Method: Automatic

Production	Potential	Casing Pressure	Producing
Oil 0	- * - BBL/D	0.1 psi (g)	Annular
Water 0	- * - BBL/D	Casing Pressure Buildup	Gas Flow - * - Mscf/D
Gas 0.0	- * - Mscf/D	-0.003 psi	% Liquid 100 %
IPR Method	Vogel	0.50 min	Pump Intake - * - psi (g)
PBHP/SBHP	- * -	Gas/Liquid Interface Pressure	Producing BHP
Production Efficiency	0.0	0.8 psi (g)	1150.8 psi (g)
Oil 39 deg.API		Liquid Level Depth	Static BHP - * - psi (g)
Water 1.05 Sp.Gr.H2O		1794.63 ft	
Gas 0.72 Sp.Gr.AIR		Pump Intake Depth	
Acoustic Velocity	1268.29 ft/s	Formation Depth	
		4324.00 ft	
Formation Submergence			
Total Gaseous Liquid Column HT (TVD)	2529 ft		
Equivalent Gas Free Liquid HT (TVD)	2529 ft		
Acoustic Test			



Acoustic Velocity 1268.29 ft/s
 Joints Per Second 15.8537 Jts/sec
 Depth to liquid level 1794.63 ft
 Automatic Collar Count Yes
 Joints counted 26
 Joints to liquid level 44,8659
 Filter Width 13,3374
 Time to 1st Collar 0,976

November 17, 2021

Chris Peters
Hartman Oil Co., Inc.
10500 E BERKELEY SQ PKWY STE 100
WICHITA, KS 67206

Re: Temporary Abandonment
API 15-055-20542-00-00
LOOMIS VEDA 4
NW/4 Sec.30-21S-33W
Finney County, Kansas

Dear Chris Peters:

"Your temporary abandonment (TA) application for the well listed above has been approved. In accordance with K.A.R. 82-3-111 the TA status of this well will expire 11/17/2022.

- * If you return this well to service or plug it, please notify the District Office.
- * If you sell this well you are required to file a Transfer of Operator form, T-1.
- * If the well will remain temporarily abandoned, you must submit a new TA application, CP-111, before 11/17/2022.

You may contact me at the number above if you have questions.

Very truly yours,

Michael Maier"