

KANSAS CORPORATION COMMISSION
OIL & GAS CONSERVATION DIVISION

TEMPORARY ABANDONMENT WELL APPLICATION

OPERATOR: License#
Name:
Address 1:
Address 2:
City: State: Zip:
Contact Person:
Phone:
Contact Person Email:
Field Contact Person:
Field Contact Person Phone:

API No. 15-
Spot Description:
Sec. Twp. S. R.
GPS Location: Lat: Long:
Datum: NAD27 NAD83 WGS84
County: Elevation:
Lease Name: Well #:
Well Type: Oil Gas OG WSW Other:
SWD Permit #: ENHR Permit #:
Gas Storage Permit #:
Spud Date: Date Shut-In:

Table with 7 columns: Conductor, Surface, Production, Intermediate, Liner, Tubing. Rows include Size, Setting Depth, Amount of Cement, Top of Cement, Bottom of Cement.

Casing Fluid Level from Surface: How Determined? Date:
Casing Squeeze(s): to w / sacks of cement, to w / sacks of cement. Date:
Do you have a valid Oil & Gas Lease? Yes No
Depth and Type: Junk in Hole at Tools in Hole at Casing Leaks: Yes No Depth of casing leak(s):
Type Completion: ALT. I ALT. II Depth of: DV Tool: w / sacks of cement Port Collar: w / sack of cement
Packer Type: Size: Inch Set at: Feet
Total Depth: Plug Back Depth: Plug Back Method:

Geological Data:

Table with 4 columns: Formation Name, Formation Top, Formation Base, Completion Information. Rows 1 and 2.

UNDER PENALTY OF PERJURY I HEREBY ATTEST THAT THE INFORMATION CONTAINED HEREIN IS TRUE AND CORRECT TO THE BEST OF MY KNOWLEDGE

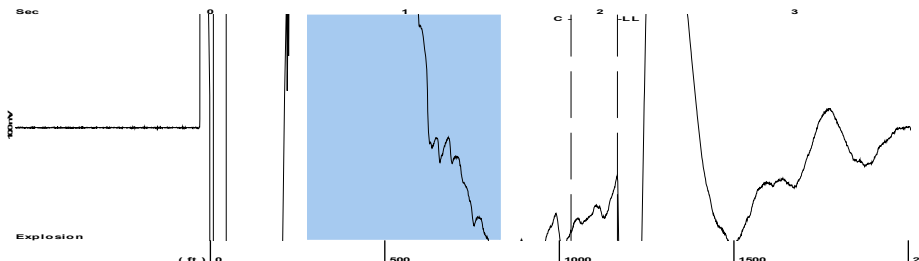
Submitted Electronically

Do NOT Write in This Space - KCC USE ONLY
Date Tested: Results: Date Plugged: Date Repaired: Date Put Back in Service:
Review Completed by: Comments:
TA Approved: Yes Denied Date:

Mail to the Appropriate KCC Conservation Office:

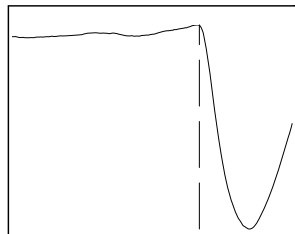
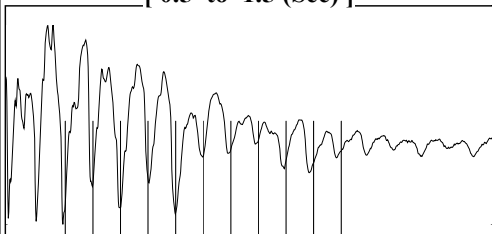
Table with 3 columns: District Office #, Address, Phone. Rows 1-4.

Group: MyWells Well: Wilson A 227 (acquired on: 10/29/21 15:55:13)



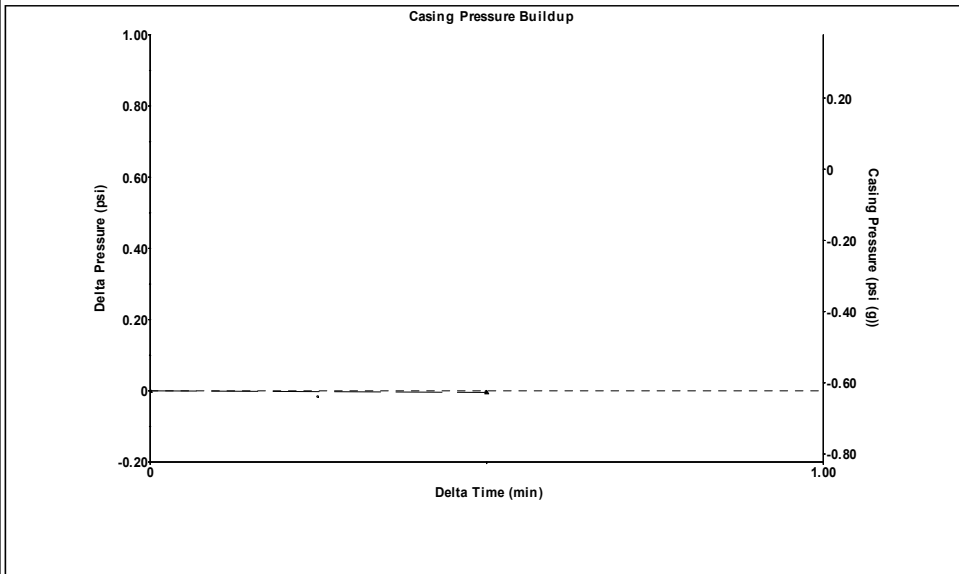
Filter Type High Pass Automatic Collar Count Yes Time 2.091 sec
 Manual Acoustic Velo 1099.47 ft/s Manual JTS/sec 17.6367 Joints 37.4348 Jts
 Depth 1166.84 ft

[0.5 to 1.5 (Sec)]



Analysis Method: Automatic

Group: MyWells Well: Wilson A 227 (acquired on: 10/29/21 15:55:13)



Change in Pressure -0.00 psi PT 12849
 Change in Time 0.50 min Range 0 - ? psi

Group: MyWells Well: Wilson A 227 (acquired on: 10/29/21 15:55:13)

Production
 Current Potential
 Oil 0.25 0.8 BBL/D
 Water 30 90.7 BBL/D
 Gas - * - 0.0 Mscf/D

IPR Method Vogel
 PBHP/SBHP 0.80
 Production Efficiency 33.1

Oil 35 deg.API
 Water 1.05 Sp.Gr.H2O
 Gas 0.85 Sp.Gr.AIR

Acoustic Velocity 1116.06 ft/s

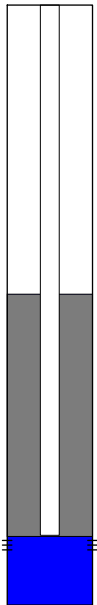
Formation Submergence
 Total Gaseous Liquid Column HT (TVD) 1233 ft
 Equivalent Gas Free Liquid HT (TVD) 1233 ft

Acoustic Test

Casing Pressure -0.6 psi (g)
 Casing Pressure Buildup -0.004 psi
 0.50 min
 Gas/Liquid Interface Pressure -0.1 psi (g)

Liquid Level Depth 1166.84 ft

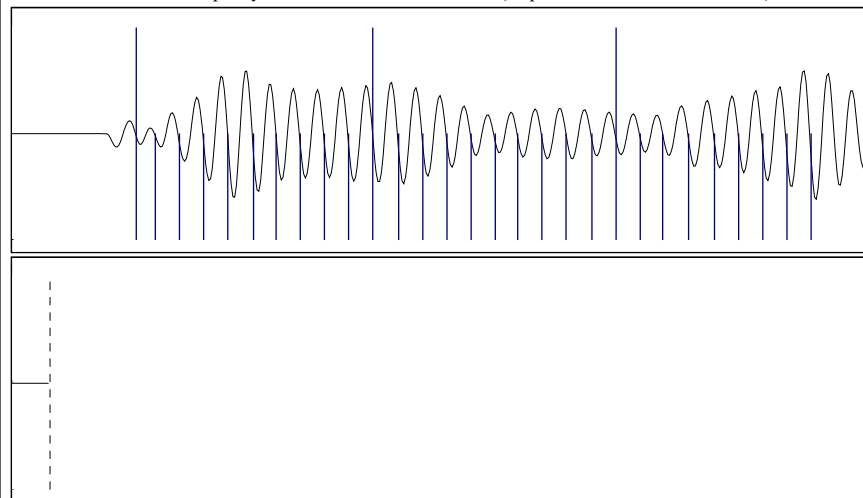
Pump Intake Depth 2400.00 ft
 Formation Depth 2448.00 ft



Producing
 Annular Gas Flow 0 Mscf/D
 % Liquid 100 %

Pump Intake 438.7 psi (g)
 Producing BHP 460.5 psi (g)
 Static BHP 580.6 psi (g)

Group: MyWells Well: Wilson A 227 (acquired on: 10/29/21 15:55:13)



Acoustic Velocity 1116.06 ft/s Joints counted 28
 Joints Per Second 17.9028 jts/sec Joints to liquid level 37.4348
 Depth to liquid level 1166.84 ft Filter Width 15.6367 19.6367
 Automatic Collar Count Yes Time to 1st Collar 0.288 1.852

Conservation Division
District Office No. 2
3450 N. Rock Road
Building 600, Suite 601
Wichita, KS 67226



Phone: 316-337-7400
Fax: 316-630-4005
<http://kcc.ks.gov/>

Andrew J. French, Chairperson
Dwight D. Keen, Commissioner
Susan K. Duffy, Commissioner

Laura Kelly, Governor

November 22, 2021

Shane Summers
Vess Oil Corporation
1700 N WATERFRONT PKWY BLDG 500
WICHITA, KS 67206-6619

Re: Temporary Abandonment
API 15-015-19612-00-00
WILSON A 227
NE/4 Sec.08-25S-05E
Butler County, Kansas

Dear Shane Summers:

"Your temporary abandonment (TA) application for the well listed above has been approved. In accordance with K.A.R. 82-3-111 the TA status of this well will expire 11/22/2022.

- * If you return this well to service or plug it, please notify the District Office.
- * If you sell this well you are required to file a Transfer of Operator form, T-1.
- * If the well will remain temporarily abandoned, you must submit a new TA application, CP-111, before 11/22/2022.

You may contact me at the number above if you have questions.

Very truly yours,

Neal Rupp ECRS"