

KANSAS CORPORATION COMMISSION
OIL & GAS CONSERVATION DIVISION

TEMPORARY ABANDONMENT WELL APPLICATION

OPERATOR: License#
Name:
Address 1:
Address 2:
City: State: Zip:
Contact Person:
Phone:
Contact Person Email:
Field Contact Person:
Field Contact Person Phone:

API No. 15-
Spot Description:
Sec. Twp. S. R.
GPS Location: Lat: Long:
Datum: NAD27 NAD83 WGS84
County: Elevation:
Lease Name: Well #:
Well Type: Oil Gas OG WSW Other:
SWD Permit #: ENHR Permit #:
Gas Storage Permit #:
Spud Date: Date Shut-In:

Table with 7 columns: Conductor, Surface, Production, Intermediate, Liner, Tubing. Rows include Size, Setting Depth, Amount of Cement, Top of Cement, Bottom of Cement.

Casing Fluid Level from Surface: How Determined? Date:
Casing Squeeze(s): to w / sacks of cement, to w / sacks of cement. Date:
Do you have a valid Oil & Gas Lease? Yes No
Depth and Type: Junk in Hole at Tools in Hole at Casing Leaks: Yes No Depth of casing leak(s):
Type Completion: ALT. I ALT. II Depth of: DV Tool: w / sacks of cement Port Collar: w / sack of cement
Packer Type: Size: Inch Set at: Feet
Total Depth: Plug Back Depth: Plug Back Method:

Geological Data:

Table with 4 columns: Formation Name, Formation Top, Formation Base, Completion Information. Rows 1 and 2.

UNDER PENALTY OF PERJURY I HEREBY ATTEST THAT THE INFORMATION CONTAINED HEREIN IS TRUE AND CORRECT TO THE BEST OF MY KNOWLEDGE

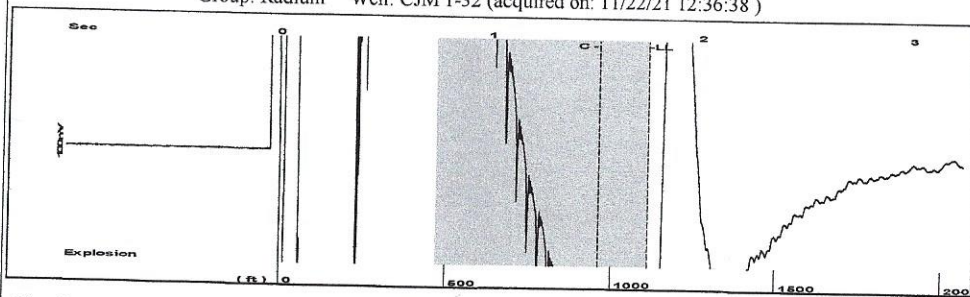
Submitted Electronically

Do NOT Write in This Space - KCC USE ONLY
Date Tested: Results: Date Plugged: Date Repaired: Date Put Back in Service:
Review Completed by: Comments:
TA Approved: Yes Denied Date:

Mail to the Appropriate KCC Conservation Office:

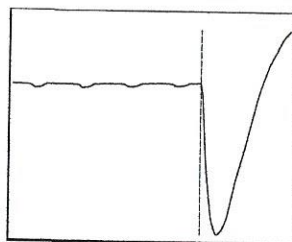
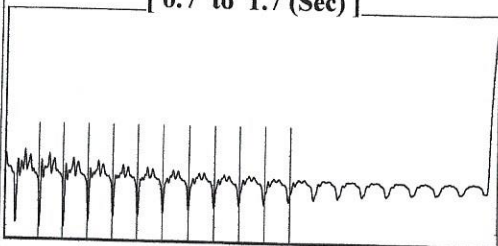
Table with 2 columns: Office Address, Phone. Rows for District Office #1, #2, #3, #4.

Group: Radium Well: CJM 1-32 (acquired on: 11/22/21 12:36:38)



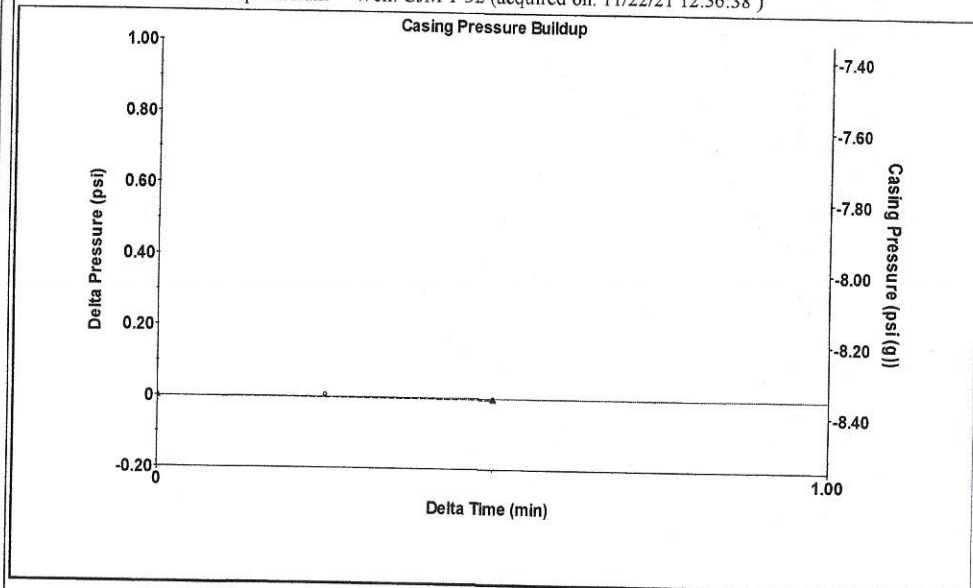
Filter Type High Pass Automatic Collar Count Yes Time 1.742 sec
 Manual Acoustic Velo 1280.71 ft/s Manual JTS/sec 19.685 Joints 34.1569 Jts
 Depth 1111.12 ft

[0.7 to 1.7 (Sec)]



Analysis Method: Automatic

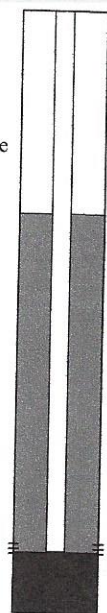
Group: Radium Well: CJM 1-32 (acquired on: 11/22/21 12:36:38)



Change in Pressure -0.00 psi PT13440
 Range 0 - ? psi
 Change in Time 0.50 min

Group: Radium Well: CJM 1-32 (acquired on: 11/22/21 12:36:38)

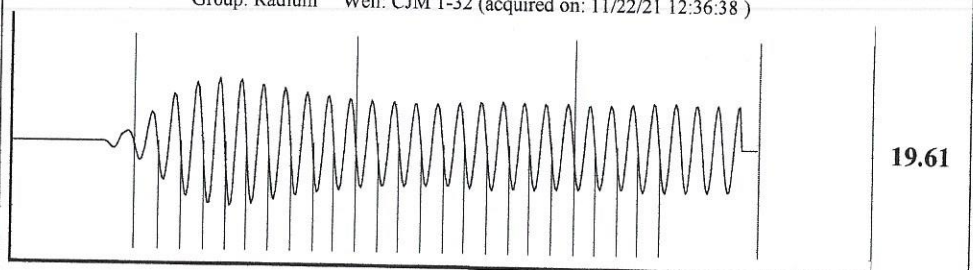
Production			
Current	Potential	Casing Pressure	
Oil -*-	-*- BBL/D	-8.4 psi (g)	
Water -*-	-*- BBL/D	Casing Pressure Buildup	
Gas -*-	-*- Mscf/D	-0.0 psi	
		0.50 min	
IPR Method	Vogel	Gas/Liquid Interface Pressure	
PBHP/SBHP	-*-	-8.2 psi (g)	
Production Efficiency	0.0		
Oil 40 deg.API		Liquid Level Depth	
Water 1.05 Sp.Gr.H2O		1111.12 ft	
Gas 0.71 Sp.Gr.AIR		Pump Intake Depth	
		3742.00 ft	
Acoustic Velocity	1275.69 ft/s	Formation Depth	
		3719.00 ft	



Producing

Annular Gas Flow	0 Mscf/D
% Liquid	100 %
Pump Intake	865.5 psi (g)
Producing BHP	858.2 psi (g)
Static BHP	-*- psi (g)

Group: Radium Well: CJM 1-32 (acquired on: 11/22/21 12:36:38)



Acoustic Velocity	1275.69 ft/s	Joints counted	24
Joints Per Second	19.6078 jts/sec	Joints to liquid level	34.1569
Depth to liquid level	1111.12 ft	Filter Width	17.685
Automatic Collar Count	Yes	Time to 1st Collar	0.284
			1.508

Conservation Division
District Office No. 4
2301 E. 13th Street
Hays, KS 67601-2651



Phone: 785-261-6250
Fax: 785-625-0564
<http://kcc.ks.gov/>

Andrew J. French, Chairperson
Dwight D. Keen, Commissioner
Susan K. Duffy, Commissioner

Laura Kelly, Governor

November 23, 2021

Loveness Mpanje
F. G. Holl Company L.L.C.
9431 E CENTRAL STE 100
WICHITA, KS 67206-2563

Re: Temporary Abandonment
API 15-009-25587-00-00
C.J.& M., INC. 1-32
NE/4 Sec.32-20S-15W
Barton County, Kansas

Dear Loveness Mpanje:

"Your temporary abandonment (TA) application for the well listed above has been approved. In accordance with K.A.R. 82-3-111 the TA status of this well will expire 11/23/2022.

- * If you return this well to service or plug it, please notify the District Office.
- * If you sell this well you are required to file a Transfer of Operator form, T-1.
- * If the well will remain temporarily abandoned, you must submit a new TA application, CP-111, before 11/23/2022.

You may contact me at the number above if you have questions.

Very truly yours,

RICHARD WILLIAMS"