

KANSAS CORPORATION COMMISSION
OIL & GAS CONSERVATION DIVISION

TEMPORARY ABANDONMENT WELL APPLICATION

OPERATOR: License#
Name:
Address 1:
Address 2:
City: State: Zip:
Contact Person:
Phone:
Contact Person Email:
Field Contact Person:
Field Contact Person Phone:

API No. 15-
Spot Description:
Sec. Twp. S. R.
feet from N / S Line of Section
feet from E / W Line of Section
GPS Location: Lat: , Long:
Datum: NAD27 NAD83 WGS84
County: Elevation: GL KB
Lease Name: Well #:
Well Type: (check one) Oil Gas OG WSW Other:
SWD Permit #: ENHR Permit #:
Gas Storage Permit #:
Spud Date: Date Shut-In:

Table with 7 columns: Conductor, Surface, Production, Intermediate, Liner, Tubing. Rows include Size, Setting Depth, Amount of Cement, Top of Cement, Bottom of Cement.

Casing Fluid Level from Surface: How Determined? Date:
Casing Squeeze(s): to w / sacks of cement, to w / sacks of cement. Date:
Do you have a valid Oil & Gas Lease? Yes No
Depth and Type: Junk in Hole at Tools in Hole at Casing Leaks: Yes No Depth of casing leak(s):
Type Completion: ALT. I ALT. II Depth of: DV Tool: w / sacks of cement Port Collar: w / sack of cement
Packer Type: Size: Inch Set at: Feet
Total Depth: Plug Back Depth: Plug Back Method:

Geological Data:

Table with 4 columns: Formation Name, Formation Top, Formation Base, Completion Information. Rows 1 and 2.

UNDER PENALTY OF PERJURY I HEREBY ATTEST THAT THE INFORMATION CONTAINED HEREIN IS TRUE AND CORRECT TO THE BEST OF MY KNOWLEDGE

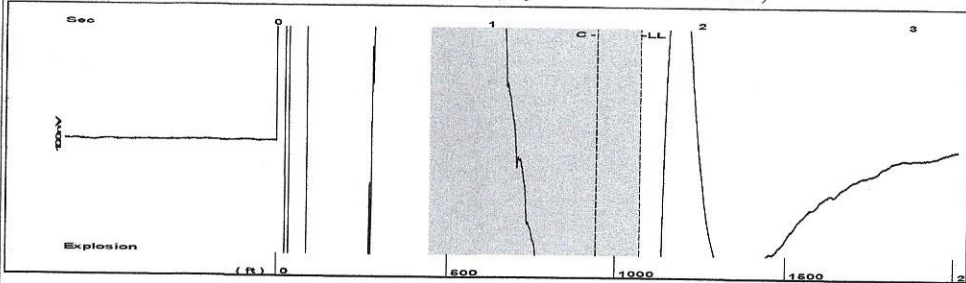
Submitted Electronically

Do NOT Write in This Space - KCC USE ONLY
Date Tested: Results: Date Plugged: Date Repaired: Date Put Back in Service:
Review Completed by: Comments:
TA Approved: Yes Denied Date:

Mail to the Appropriate KCC Conservation Office:

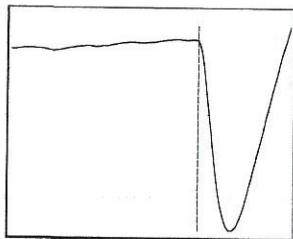
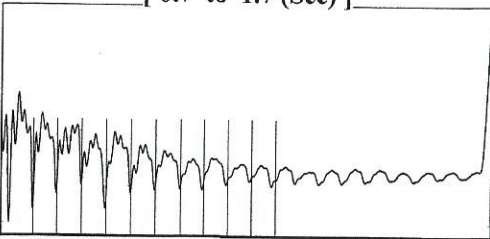
Table with 3 columns: District Office, Address, Phone. Rows for District Office #1, #2, #3, #4.

Group: Belpre Well: JH Cross 1-22 (acquired on: 11/23/21 11:01:11)



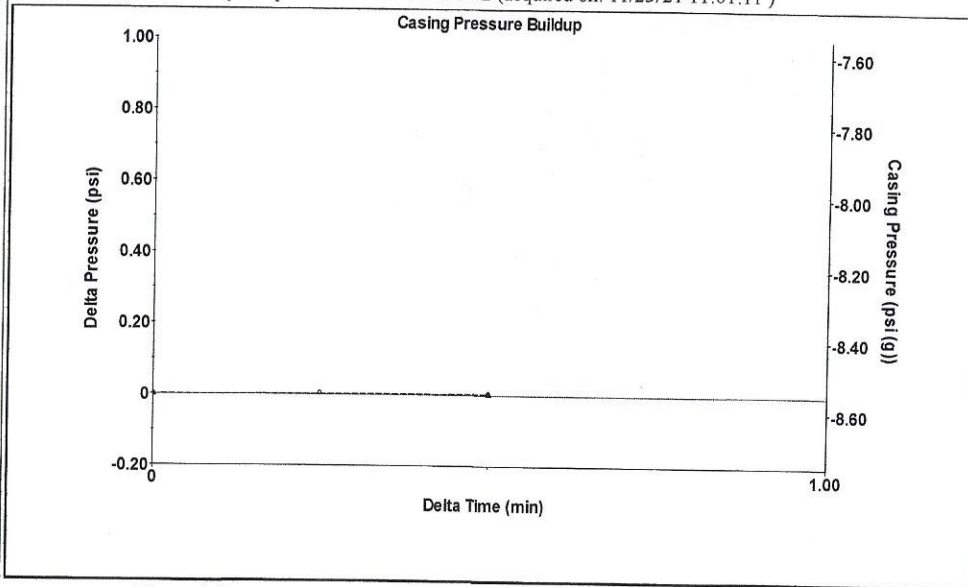
Filter Type High Pass Automatic Collar Count Yes Time 1.717 sec
 Manual Acoustic Velocity 1249 ft/s Manual JTS/sec 20.0803 Joints 34.5056 Jts
 Depth 1073.13 ft

[0.7 to 1.7 (Sec)]



Analysis Method: Automatic

Group: Belpre Well: JH Cross 1-22 (acquired on: 11/23/21 11:01:11)



Change in Pressure 0.00 psi PT13440
 Change in Time 0.50 min Range 0 - ? psi

Group: Belpre Well: JH Cross 1-22 (acquired on: 11/23/21 11:01:11)

Production
 Current Potential
 Oil - * - - * - BBL/D
 Water - * - - * - BBL/D
 Gas - * - - * - Mscf/D

IPR Method Vogel
 PBHP/SBHP - * -
 Production Efficiency 0.0

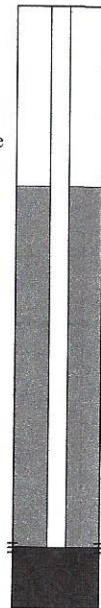
Oil 40 deg.API
 Water 1.05 Sp.Gr.H2O
 Gas 0.73 Sp.Gr.AIR

Acoustic Velocity 1250 ft/s

Casing Pressure -8.6 psi (g)
 Casing Pressure Buildup 0.0 psi
 0.50 min
 Gas/Liquid Interface Pressure -8.4 psi (g)

Liquid Level Depth 1073.13 ft

Pump Intake Depth 4293.00 ft
 Formation Depth 4295.00 ft



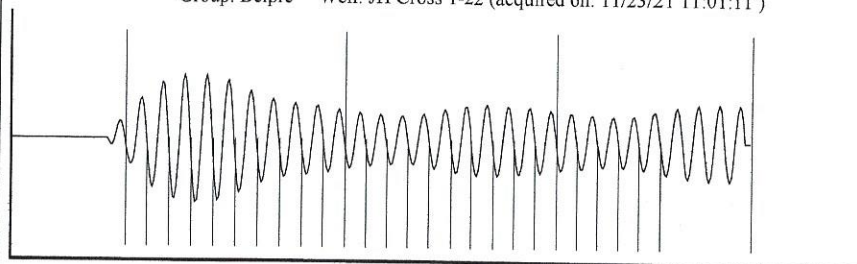
Producing
 Annular Gas Flow 0 Mscf/D
 % Liquid 100 %

Pump Intake 1051.8 psi (g)
 Producing BHP 1052.7 psi (g)
 Static BHP - * - psi (g)

Formation Submergence
 Total Gaseous Liquid Column HT (TVD) 3220 ft
 Equivalent Gas Free Liquid HT (TVD) 3220 ft

Acoustic Test

Group: Belpre Well: JH Cross 1-22 (acquired on: 11/23/21 11:01:11)



20.10

Acoustic Velocity 1250 ft/s Joints counted 25
 Joints Per Second 20.0965 jts/sec Joints to liquid level 34.5056
 Depth to liquid level 1073.13 ft Filter Width 18.0803 22.0803
 Automatic Collar Count Yes Time to 1st Collar 0.264 1.508

Conservation Division
District Office No. 1
210 E. Frontview, Suite A
Dodge City, KS 67801



Phone: 620-682-7933
<http://kcc.ks.gov/>

Andrew J. French, Chairperson
Dwight D. Keen, Commissioner
Susan K. Duffy, Commissioner

Laura Kelly, Governor

November 24, 2021

Loveness Mpanje
F. G. Holl Company L.L.C.
9431 E CENTRAL STE 100
WICHITA, KS 67206-2563

Re: Temporary Abandonment
API 15-047-20393-00-00
CROSS J.H. 1-22
NW/4 Sec.22-24S-17W
Edwards County, Kansas

Dear Loveness Mpanje:

"Your temporary abandonment (TA) application for the well listed above has been approved. In accordance with K.A.R. 82-3-111 the TA status of this well will expire 11/24/2022.

- * If you return this well to service or plug it, please notify the District Office.
- * If you sell this well you are required to file a Transfer of Operator form, T-1.
- * If the well will remain temporarily abandoned, you must submit a new TA application, CP-111, before 11/24/2022.

You may contact me at the number above if you have questions.

Very truly yours,

Michael Maier"