

# GEOLOGIC REPORT

## DAVID J. GOLDAK

WICHITA, KANSAS  
Scale 1:240 (5"=100') Imperial  
Measured Depth Log

Well Name: Maxwell #1-32  
API: 15-055-22527-0000  
Location: Section 32 - T23S - R29W  
License Number: \_\_\_\_\_  
Spud Date: 10 / 22 / 2019  
Surface Coordinates: 1734' FSL and 1727' FWL  
NE - SW - NE - SW  
Bottom Hole Coordinates: \_\_\_\_\_  
Ground Elevation (ft): 2777' K.B. Elevation (ft): 2782'  
Logged Interval (ft): 3900' To: 4890' Total Depth (ft): 4890'  
Formation: Mississippian - St Louis  
Type of Drilling Fluid: Chemical - Mud-Co

Region: Finney Co., KS  
Drilling Completed: 10 / 28 / 2019

Printed by MudLog from WellSight Systems 1-800-447-1534 www.WellSight.com

### OPERATOR

Company: Stelbar Oil Corporation  
Address: 1625 N. Waterfront Pkwy., Suite 200  
Wichita, Kansas 67206-6602

### GEOLOGIST

Name: David J. Goldak  
Company: D. J. GOLDAK, INC.  
Address: 12427 W Ridgepoint Cir  
Wichita, Kansas 67235

### General Info

CONTRACTOR: Murfin Drilling, Rig #102

#### BIT RECORD:

No.	Size	Make	Jets	Out	Feet	Hours
1	12-1/4	Smith-?	3-15s	514'	514'	8.75
2	7-7/8	Smith-MI616	3-15s	4890'	4376'	70.75

SURVEYS: 514'-0.75, 4749'-0.75, 4890'-0.75

#### GENERAL DRILLING & PUMP INFORMATION:

Drilling with 16 collars (6.25" x 2.25"): 473.44'  
Drilling with 12,000-16,000 lbs on bit and 95-110 RPM.  
Pumping 60 S/M; 7.7 B/M; 700-800 psi at standpipe.

### Daily Status

10/22/19 - Spud at 5:15 PM; Set 8-5/8" csg at 514'  
 10/23/19 - 514' Cementing; PD @ 8:00 AM; DP at 4:00 PM  
 10/24/19 - 1,580' Drilling;  
 10/25/19 - 3,181' Drilling; Lost Circ @ 3,218'; Displace mud @ 3,218'; Regain full returns  
 10/26/19 - 4,340' Drilling; Wiper trip @ 4,686' (30 stands)  
 10/27/19 - 4,749' TOH with DST #1; DST #2 @ 4,749'; RTD @ 4,890'  
 10/28/19 - 4,890' CTCH; Log well in PM; Plug well

	Log Tops	Sample Tops
--	----------	-------------

Anhydrite	1918 (+864)	
Base of Anhy	1990 (+792)	
Heebner	4007 (-1225)	4010 (-1228)
Lansing	4056 (-1274)	4060 (-1278)
Stark Sh	4368 (-1586)	4371 (-1589)
Hushpuckney Sh	4412 (-1630)	4415 (-1633)
Base of KC	4490 (-1708)	4493 (-1711)
Marmaton	4504 (-1722)	4507 (-1725)
Pawnee	4590 (-1808)	4594 (-1812)
Cherokee Sh	4629 (-1847)	4632 (-1850)
Basal Penn Sh	4737 (-1955)	4741 (-1959)
Basal Penn Ss	4739 (-1957)	4742 (-1960)
Miss - St Gen	4760 (-1978)	4770 (-1988)
Miss - St Louis	4780 (-1998)	4782 (-2000)
Total Depth	4886 (-2104)	4890 (-2108)

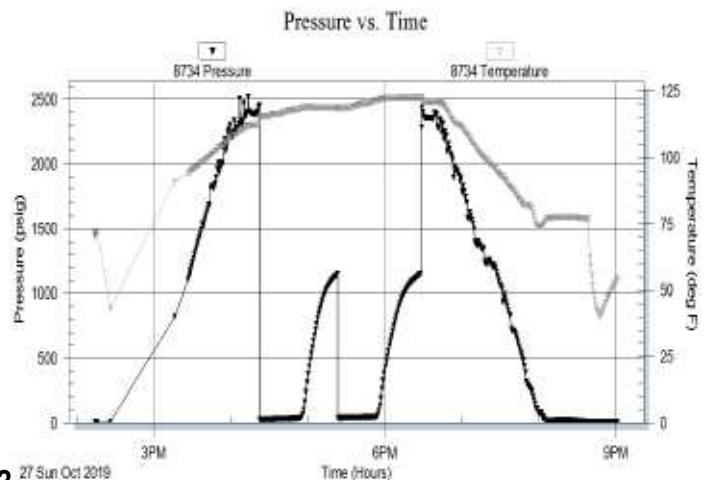
**DST #1: 4,735' - 4,749' (Basal Penn Sand)**  
 Misrun - Hit bridge at 1,670'

**DST #2: 4,735' - 4,749' (Basal Penn Sand)**  
 30" - 30" - 30" - 30"

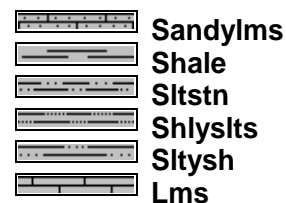
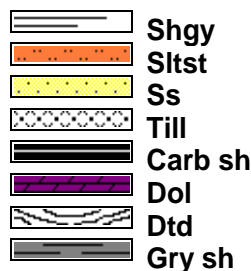
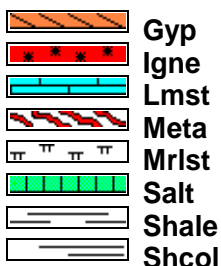
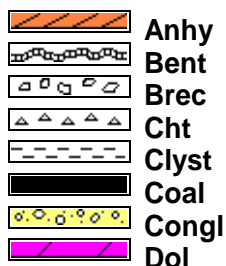
**IF: Weak blow building to 1.25 inches**  
**ISI: No return blow**  
**FF: Weak blow building to 0.50 inches**  
**FSI: No return blow**

**RECOVERY: 20' Total Fluid, consisting of:**  
 20' VSO&SWCM (3% O, 7% W, 90% M)  
**Sampler: 100 ml Mud & 1,900 ml Water @ 15 psi**  
**Chlorides of Recovery: 17,000 ppm**

**SIP: 1150-1152; FP: 28-38, 39-48; HP: 2454-2435; BHT: 122**



## ROCK TYPES

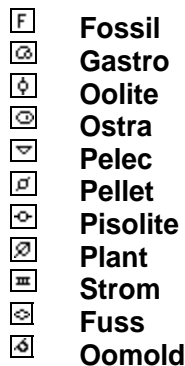
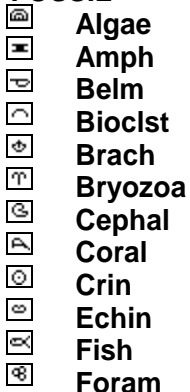


## ACCESSORIES

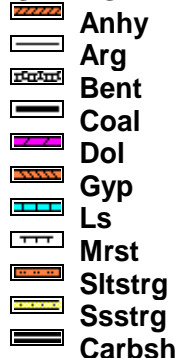
### MINERAL



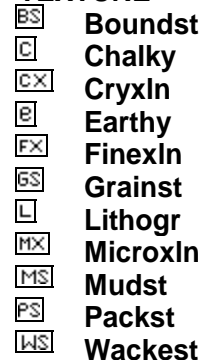
### FOSSIL



### STRINGER

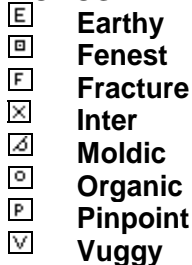


### TEXTURE



## OTHER SYMBOLS

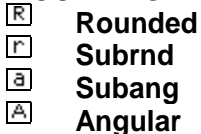
### POROSITY TYPE



### SORTING



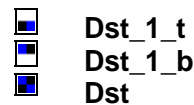
### ROUNDING



### OIL SHOWS

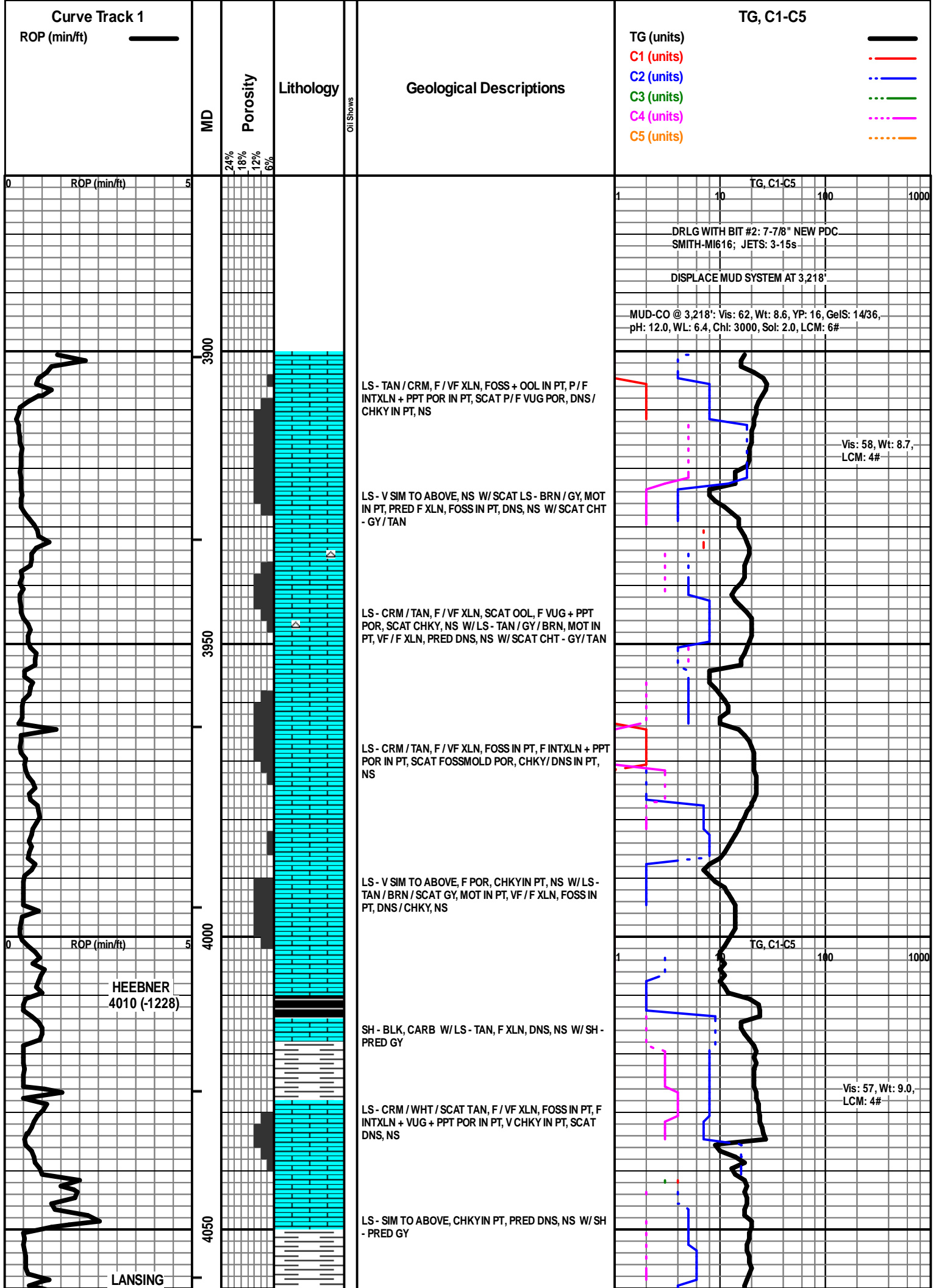


### INTERVALS



### EVENTS





4060 (-1278)

LS - TAN / CRM / SCAT BRN, F / VF XLN, FOSS IN PT, SCAT OOL, SCAT P / TR F INTXLN + PPT POR, NS

LS - CRM / TAN, VF / SCAT F XLN, SL FOSS + OOL, SUBCHKY IN PT, PRED DNS, NS

SH - GY / DK GY W / LS - TAN / GY / SCAT BRN, MOT IN PT, F / VF XLN, TR FOSS, PRED DNS, NS

LS - CRM / TAN, F / VF XLN, FOSS IN PT, P / TR F INTXLN POR, CHKY IN PT / DNS, NS

LS - TAN / CRM, F / VF XLN, OOL, P / F OOM POR IN PT, PRED P INTXLN POR, SUBCHKY IN PT / DNS, NS

LS - CRM / TAN / LT GY, F / VF XLN, SCAT REXLN CALC, SCAT P VUG POR, CHKY IN PT / DNS, NS W / SCAT CHT - LT GY / WHT

LS - CRM / TAN, F XLN, SCAT REXLN CALC, OOL IN PT, SL FOSS, P / F VUG POR, SCAT OOM POR, NS W / CHT - LT GY / WHT W / SCAT SH - GY / BLK

LS - LS - SIM TO ABOVE, NS W / LS - BRN / GY, MOT, F XLN, OOL, PRED DNS, NS W / LS - CRM / WHT, VF / F XLN, SL FOSS + OOL, SCAT F VUG + INTXLN POR, CHKY IN PT, NS W / CHT - WHT / LT GY

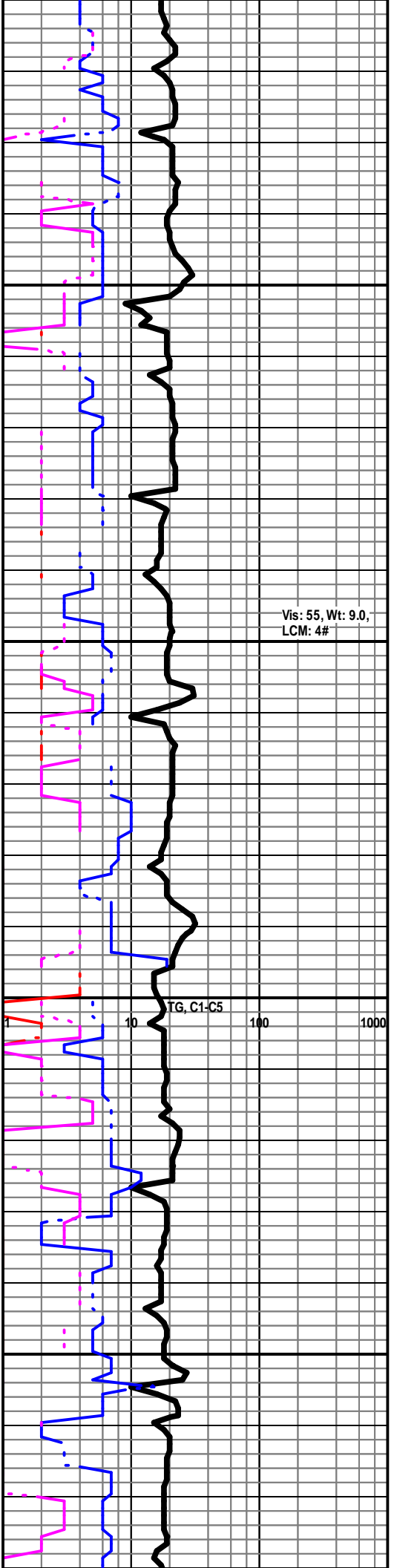
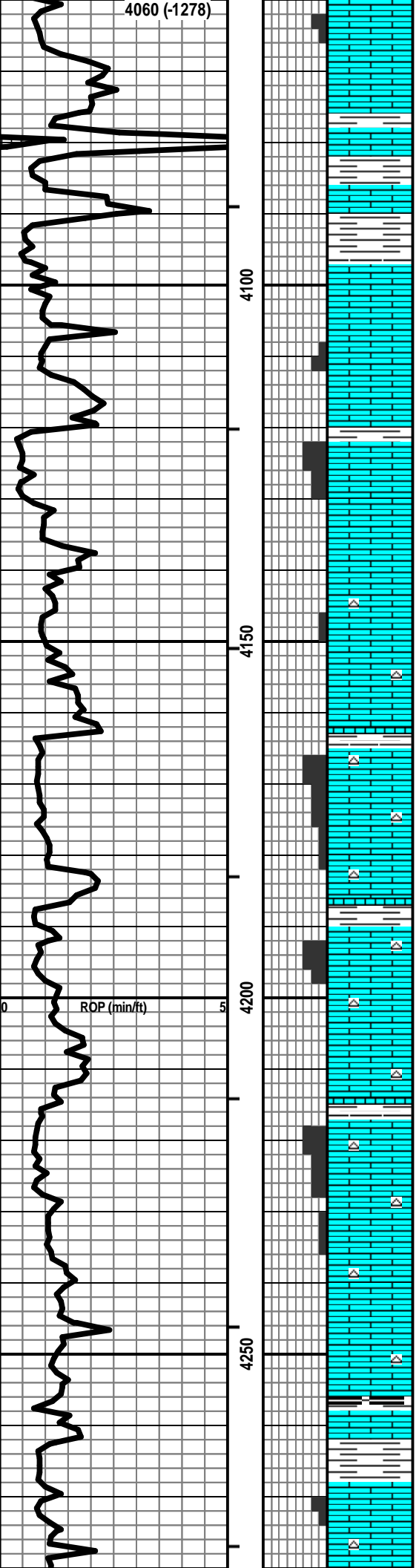
LS - TAN / CRM, VF / F XLN, TR FOSS, PRED SUBCHKY / DNS, NS W / CHT - WHT / LT GY

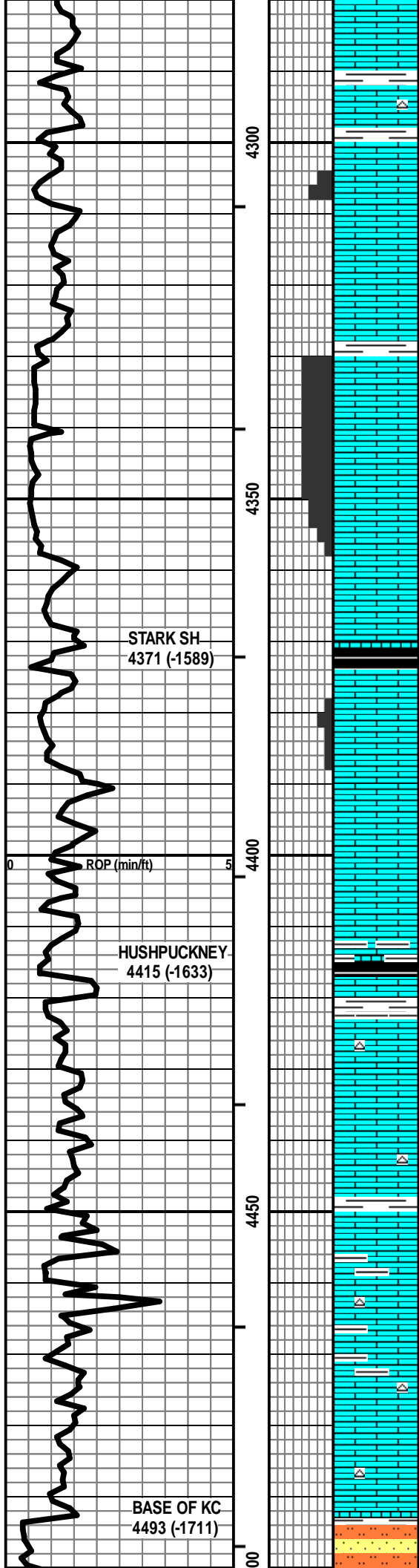
LS - CRM / TAN, F / VF XLN, SL OOL + FOSS, F INTXLN + PPT POR IN PT, CHKY IN PT / DNS, NS W / CHT - LT GY / WHT / TAN

LS - TAN / CRM / GY, F / VF XLN, FOSS IN PT, PRED DNS, NS W / SCAT CHT W / SCAT SH - GY / BLK, CARB IN PT

SH - GY / SCAT BLK W / LS - TAN / CRM / BRN, F XLN, OOL IN PT, SCAT INTXLN POR, PRED DNS, NS W / SCAT CHT - WHT / LT GY

Vis: 55, Wt: 9.0, LCM: 4#





LS - CRM / TAN, VF / F XLN, SCAT OOL, PRED SUBCHKY / DNS, NS W / SCAT CHT

Vis: 52, Wt: 9.1, LCM: 4#

LS - CRM / TAN, F / VF XLN, OOL IN PT, F INTXLN / INTPART POR IN PT, SUBCHKY / DNS IN PT, NS W / SCAT SH - PRED GY

LS - TAN / BRN, MOT IN PT, F XLN, FOSS + OOL, PRED DNS, NS

LS - TAN / GY / CRM, F XLN, OOL, F / G OOM POR, F INTXLN POR, NS

SCAT LS - AS ABOVE, NS W / LS - TAN / GY, VF XLN, SUBCHKY / DNS, NS W / SH - BLK, CARB

STARK SH  
4371 (-1589)

LS - CRM / TAN, F / VF XLN, SCAT OOL + FOSS, SCAT P / F INTXLN + VUG POR, PRED DNS, TR GB, PRED NS, NO ODOR

LS - TAN / GY, MOT IN PT, VF / F XLN, SCAT OOL + FOSS, SCAT ARGIL, PRED DNS, NS W / SH - BLK, CARB

HUSHPUCKNEY  
4415 (-1633)

LS - TAN / CRM / SCAT GY, F / VF XLN, OOL IN PT, SL FOSS, PRED SUBCHKY / DNS, NS W / CHT - GY W / SCAT SH - PRED GY

Vis: 51, Wt: 9.1, YP: 18, GeIS: 14/36, pH: 10.5, WL: 7.2, Chl: 3200, Sol: 5.4, LCM: 3#

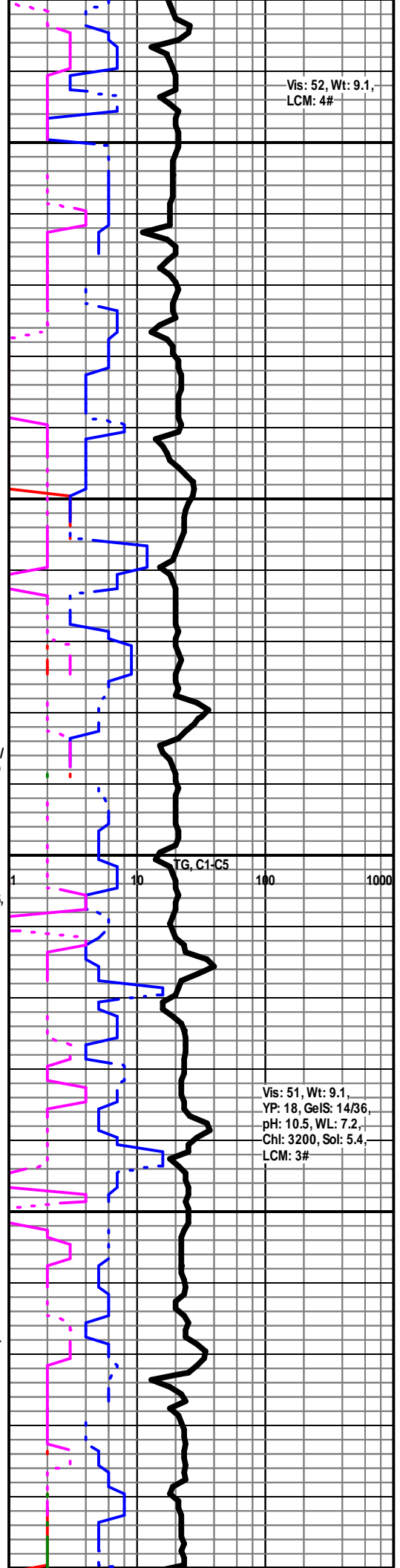
LS - AS ABOVE, NS W / LS - CRM / TAN, F / VF XLN, SCAT REXLN CALC, FOSS IN PT, PRED DNS, SCAT ARGIL, NS

LS - GY / BRN / TAN, MOT IN PT, F / VF XLN, SL FOSS, SCAT SUBCHKY, PRED DNS, NS W / SCAT CHT W / SH - MED / DK GY

LS - TAN / BRN / GY, MOT IN PT, F / VF XLN, SL FOSS, PRED DNS, NS W / SCAT CHT - GY / TAN

BASE OF KC  
4493 (-1711)

LS - AS ABOVE, NS W / SH + SLTST + SS - GY, SLT / VF GR, MIC



MARMATON  
4507 (-1725)

LS - TAN / GY / CRM, F / VF XLN, SCAT REXLN CALC,  
FOSS IN PT, SUBCHKY IN PT, PRED DNS, NS W/ SH -  
PRED GY

ABNT SH - PRED GY W/LS - V SIM TO ABOVE, PRED  
DNS, NS

LS - CRM / TAN, VF / F XLN, SCAT CRYPTO XLN, SCAT  
OOL, PRED DNS, NS

LS - CRM / TAN, VF / F XLN, OOL + FOSS IN PT,  
SUBCHKY IN PT, PRED DNS, NS

LS - BRN / GY / TAN, MOT IN PT, F XLN, PRED DNS, NS  
W/ SH - DK GY / BLK

PAWNEE  
4594 (-1812)

LS - CRM / TAN, F / VF XLN, OOL IN PT, SL FOSS, TR P  
INTXLN / INTPART POR, CHKY IN PT, TR OILY FILM +  
GB WET + TR SPTY STN DRY, NO ODOR, TR F / G  
FLUOR + CUT

LS - AS ABOVE, PRED CHKY / DNS, NO ODOR

LS - TAN / CRM / BRN, MOT IN PT, F / VF XLN, FOSS IN  
PT, PRED DNS, NS W/ SH - PRED BLK, CARB

CHEROKEE  
4632 (-1850)

LS - TAN / CRM, F / VF XLN, SL FOSS, SUBCHKY IN PT,  
PRED DNS, NS W/ SCAT CHT - GY W/ SH - GY / BLK

LS - TAN / GY / CRM, MOT IN PT, F / VF XLN, SCAT FOSS,  
PRED DNS, NS W/ SCAT CHT - GY W/ SH - GY / BLK

LS - TAN / BRN / CRM, F / VF XLN, PRED DNS, NS W/  
ABNT SH - GY / BLK

LS - TAN / SCAT CRM, MOT IN PT, F / VF XLN, SL FOSS,  
PRED DNS, NS W/ SCAT SH - GY

LS - TAN / BRN / CRM, MOT IN PT, F / VF XLN, SL FOSS,  
PRED DNS, NS W/ SH - PRED GY

Vis: 59, Wt: 9.2,  
LCM: 3#

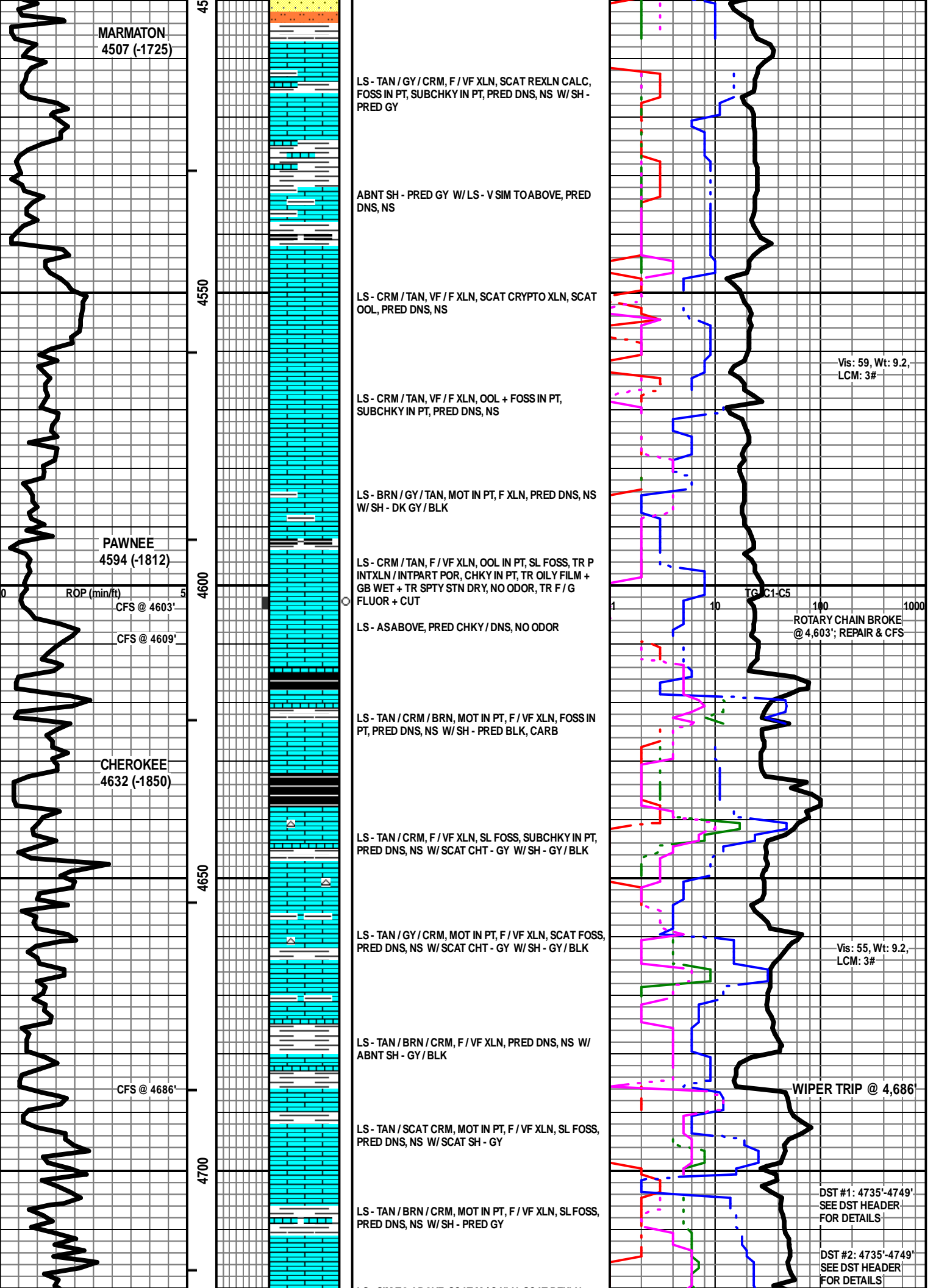
ROTARY CHAIN BROKE  
@ 4,603'; REPAIR & CFS

Vis: 55, Wt: 9.2,  
LCM: 3#

WIPER TRIP @ 4,686'

DST #1: 4735'-4749'  
SEE DST HEADER  
FOR DETAILS

DST #2: 4735'-4749'  
SEE DST HEADER  
FOR DETAILS



ROP (min/ft)  
CFS @ 4603'  
CFS @ 4609'

CFS @ 4686'

TG, C1-C5

LS - SIM TO ABOVE, SCAT M/C XLN, SCAT REXLN  
CALC, NO VIS POR, TR GB, NSO

LS - CRM / TAN, VF / F XLN, SL FOSS, SUBCHKY IN PT,  
PRED DNS, NS W/ SH - GY / BLK

SS - LT GY, PRED VF / F GR, SCAT M GR, W / FW SRTD,  
SR, PRED SIL / V SL CALC CEM, SL GLAUC, F INTGR  
POR, MOD FRI IN PT, GSFO + GB, G ODOR, PRED SAT  
STN, G F + C

SS - AS ABOVE, SOME GRN / WHT, VF / F GR, W SRTD,  
SCAT SHOWS AA, PRED BARR W/ MOD AMT SH -  
PRED GY W/ SS - WHT / LT GY, VF / M GR, TR C GR, P  
SRTD, SR / R, SIL, P / F INTGR POR, CHTY IN PT, NS W/  
CHT - PRED WHT

LS - WHT / CRM, VF XLN, AREN, VF QTZ GR, FNLY OOL,  
SUBCHKY / DNS, NS

LS - CRM / WHT, VF / F XLN, OOL, VP / NO INTOOL POR,  
PRED SUBCHKY / CHKY, TR OIL FILM ?, NSFO, NO  
ODOR, NO STN, NO FLUOR OR CUT

LS - CRM / TAN / SCAT WHT, F / VF XLN, OOL,  
SUBCHKY / PRED DNS, NS

LS - TAN / CRM, F / VF XLN, OOL IN PT, SUBCHKY IN PT,  
PRED DNS, NS

LS - TAN / CRM, F / VF XLN, SCAT CRYPTO XLN, SCAT  
OOL, SUBCHKY IN PT, PRED DNS, NS

LS - TAN / CRM, F / VF XLN, OOL IN PT, SCAT SUBCHKY,  
PRED DNS, NS W/ TR CHT - LT GY

LS - TAN / CRM / SCAT BRN, F / VF XLN, SCAT OOL,  
SCAT CHKY, PRED DNS, NS W/ SCAT CHT - LT GY /  
WHT / TAN

LS - TAN / CRM / SCAT BRN, F / VF XLN, SCAT CRYPTO  
XLN, SCAT OOL, SCAT CHKY, PRED DNS, NS

TOTAL DEPTH 4890 (-2108)

Vis: 57, Wt: 9.2,  
YP: 20, GeIS: 14/36,  
pH: 11.0, WL: 7.2,  
Chl: 2400, Sol: 6.2,  
LCM: 3#

PIPE STRAP @  
4749': LONG 0.04'

Vis: 54, Wt: 9.3,  
LCM: 3#

Vis: 54, Wt: 9.3,  
YP: 19, GeIS: 14/35,  
pH: 10.0, WL: 7.2,  
Chl: 3200, Sol: 7.0,  
LCM: 3#

B. P. SHALE  
4741 (-1959)

CFS @ 4749'

CFS @ 4770'  
MISS ST GEN  
4770 (-1988)

ST LOUIS  
4782 (-2000)

4750

4800

4850

4900

Por (min/ft)

TC C1-C5