

Midwestern Exploration Company

Tony Nix 4-6

Scale 1:240 (5"=100') Imperial
Measured Depth Log

Well Name: Tony Nix 4-6
API: 15-189-22861
Location: Section 6-T35S-R35W
License Number: KCC 5263
Spud Date: 9/18/2019
Surface Coordinates: 335' FSL & 1532' FWL
Region: Stevens Co, KS
Drilling Completed: 9/25/2019
Bottom Hole Coordinates: 335' FSL & 1532' FWL
Ground Elevation (ft): 3,005' K.B. Elevation (ft): 3,017'
Logged Interval (ft): 3,800' To: 6,670' Total Depth (ft): 6,670'
Formation: Ste. Genevieve
Type of Drilling Fluid: Chemical

Printed by MudLog from WellSight Systems 1-800-447-1534 www.WellSight.com

OPERATOR

Company: Midwestern Exploration Company
Address: 3500 S. Boulevard, Suite #2B
Edmond, OK 73013

GEOLOGIST

Name: Thomas M. Williams
Company: Petroleum Geologist
Address: Wichita, KS

CORE

Contractor:
 Core #:
 Formation:
 Core Interval: From: Cut:
 To: Recovered:
 Bit type:
 Size:
 Coring Time:

Formation Tops

Sample Top	E-Log Top
Oread Lime	4245 (-1228) -8
Base/Heebner Shale	4323 (-1306) -13
Toronto Lime	4334 (-1317) -14
Douglas Shale	4391 (-1374) -12
Lansing	4440 (-1423) -14
Kansas City	4787 (-1770) -3
Marmaton Lime	5202 (-2185) +1
Cherokee Shale	5569 (-2552) -1
Atoka Lime	5752 (-2735) +4
Lower Atoka Lime	5892 (-2875) +5
Morrow Shale	5934 (-2917) +4
1st Lwr. Morrow Lm	6247 (-3230) +1
2nd Lwr. Morrow Lm	6254 (-3237) +2
Lower Morrow Sand	6268 (-3251) +2
Chester 'C' Lime	6334 (-3317) +1
Chester 'B' Lime	6403 (-3386) -6
Chester 'A' Lime	6484 (-3467) -1
Chester 'B' Sand	6571 (-3554) N/A
Lwr. Chester 'B' Sand	6601 (-3584) -12
Ste Genevieve	6629 (-3612) -6

DSTs

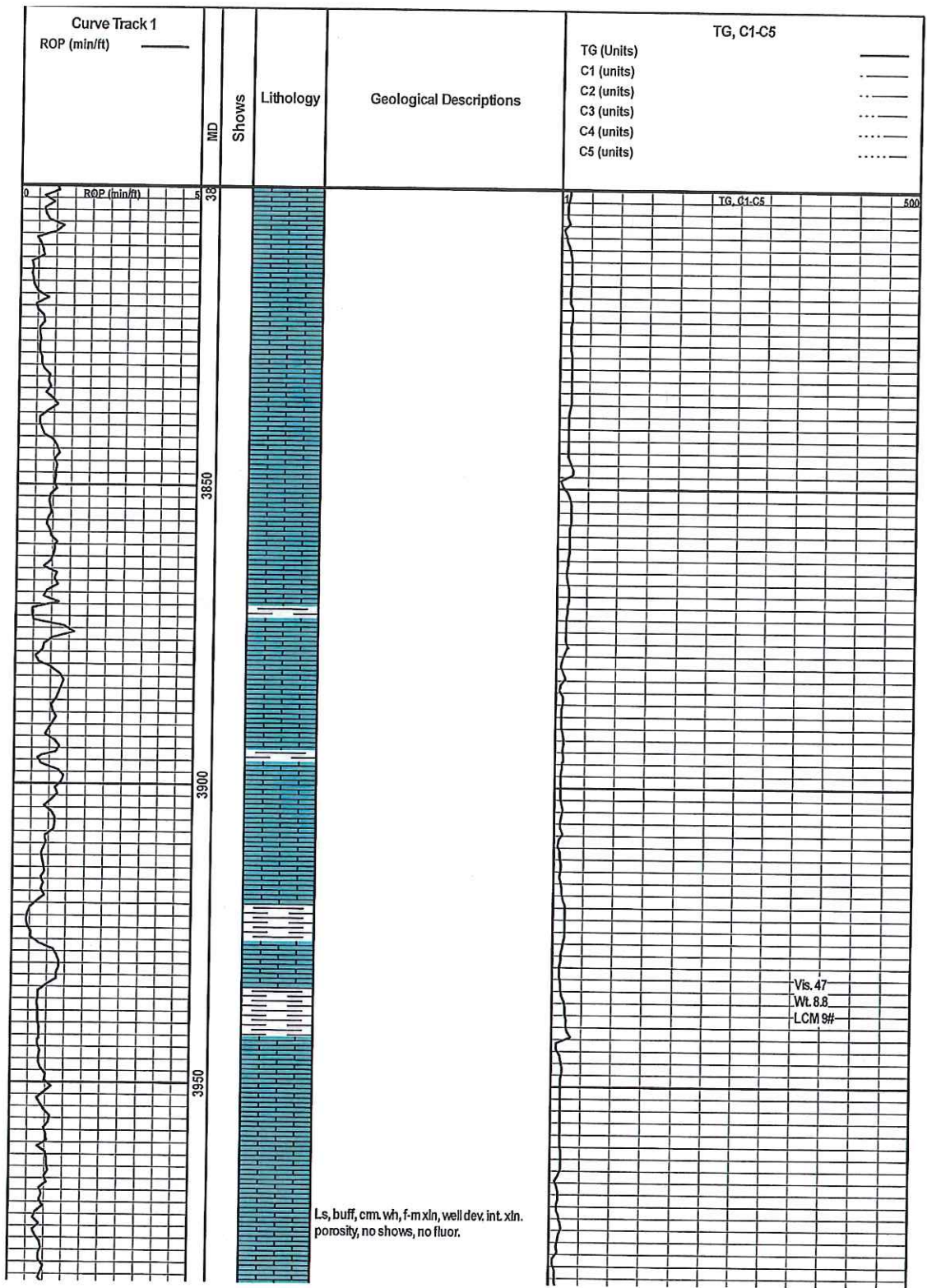
None

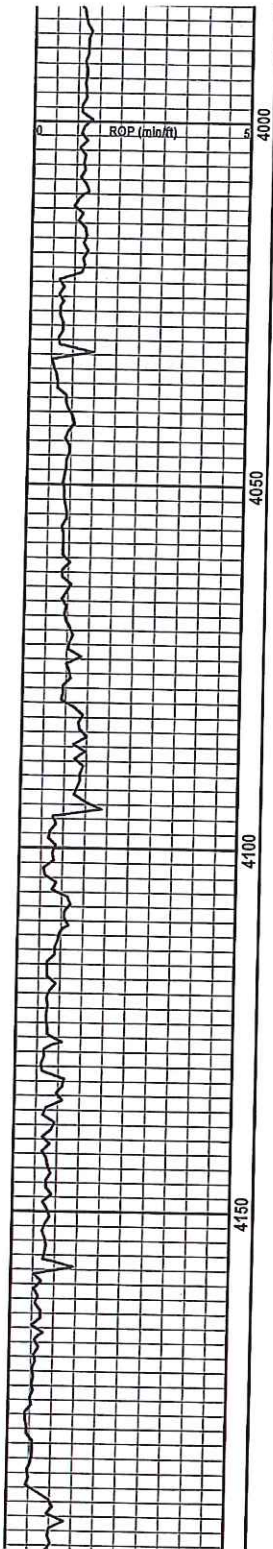
Comments

RTD 6670'

ROCK TYPES

 Anhy	 Carb.sh	 Lmst	 Shcol
 Bent	 Congl	 Meta	 Shgy
 Brec	 Dol	 Mrlst	 Slstst
 Cht	 Gyp	 Salt	 Ss
 Clyst	 Igne	 Shale	 Till





Ls, lt. to med. gry, dns, no vis. porosity, w/ lt. to med. gry shale.

Ls, lt. to med. gry, dns, no vis. porosity, w/ lt. to med. gry shale.

Ls, med. gry, dns, no vis. porosity, w/ med. gry silty shale.

Ls, med. gry, dns, no vis. porosity, w/ med. gry silty shale.

Sh, lt. to med. gry, silty, micaceous.

Sh, lt. to med. gry, silty, micaceous.

Sh, lt. to med. gry, silty, micaceous.

Ls, buff, lt. gry, f. xln, poorly dev. to no vis. porosity, no show, no fluor.

Ls, med. gry, dns, f-m xln, no vis. porosity, no shows, no fluor.

Ls, lt. to med. gry, dns, p. dev. por; no show, no fluor, t; drk. chert.

Sh, med. to drk gry, fissle, brittle.

Sh, med. to drk gry, fissle, brittle.

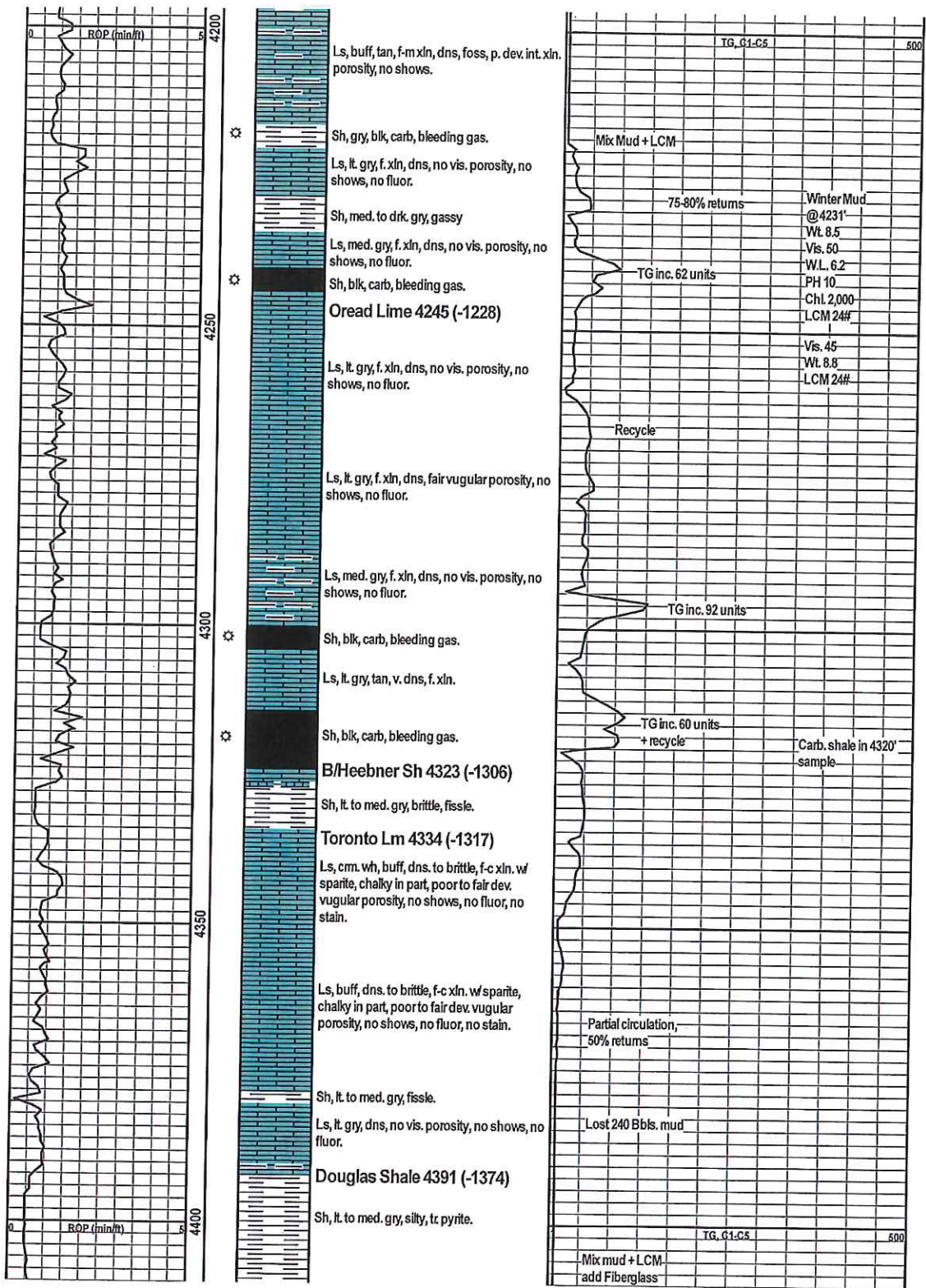
Ls, lt. to med. gry, dns, p. dev. int. xln. porosity, no shows, no fluor.

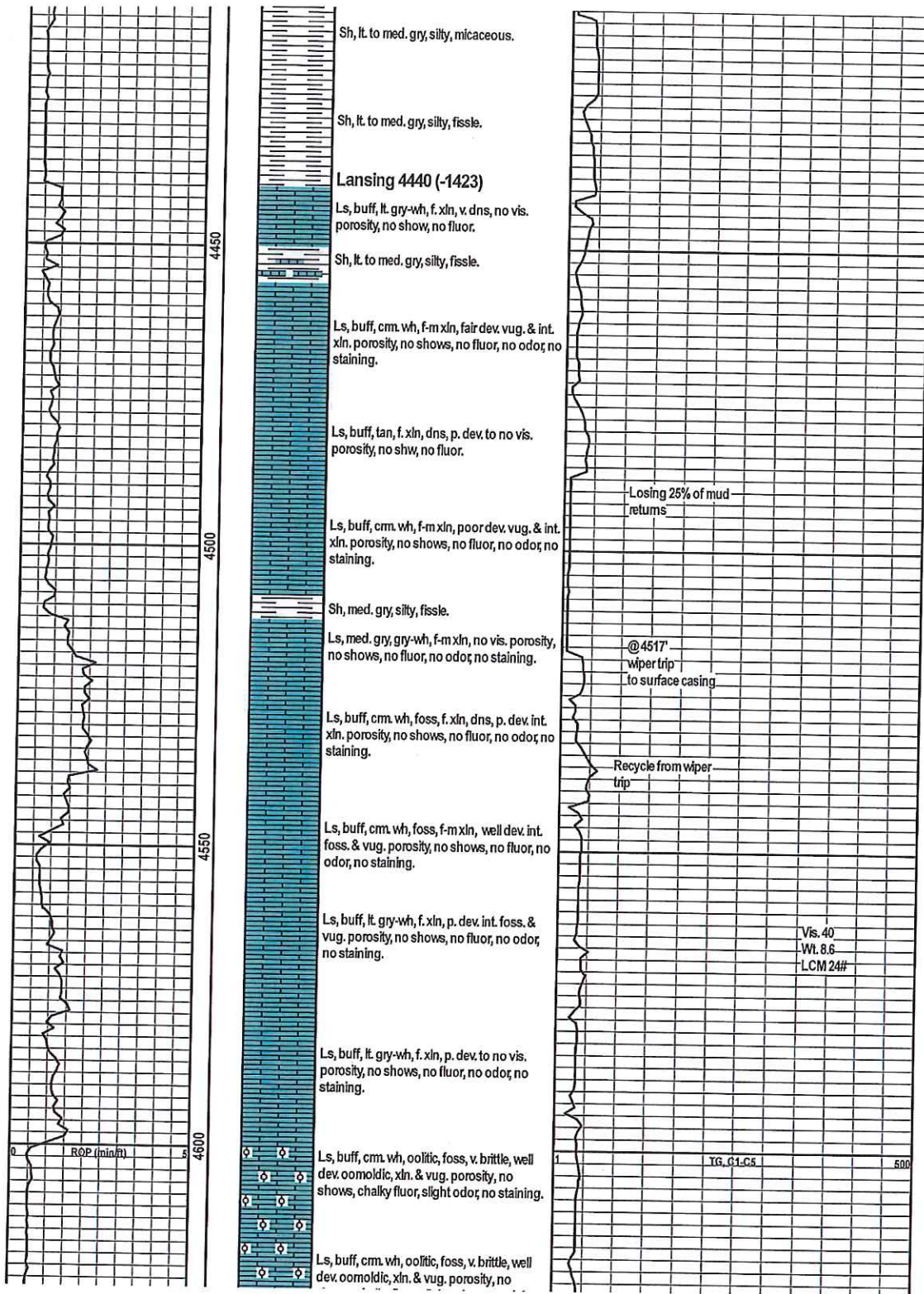
No samples due to lost circulation.

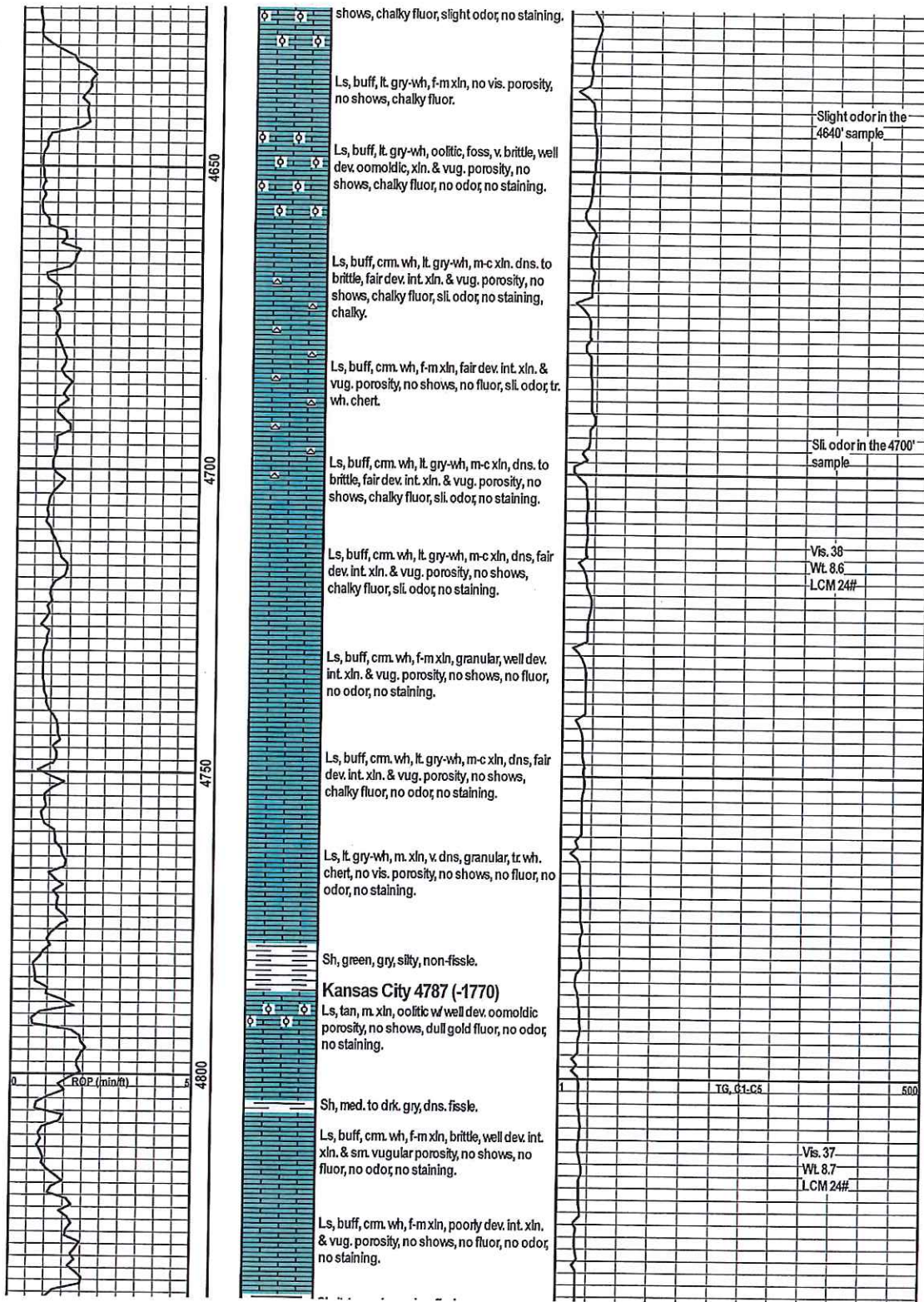
No samples due to lost circulation.

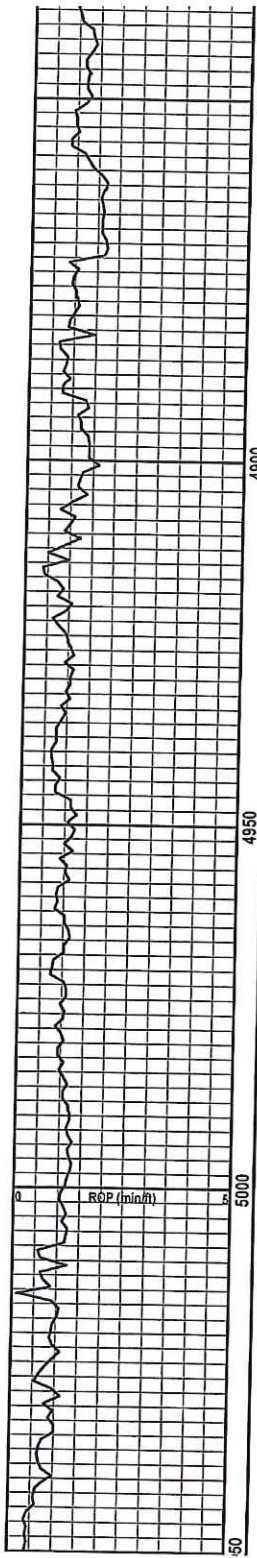
Red & gry. shale, with buff & gry. limestone.

Start Samples	
TG, G1-C6	500
Vis. 50 Wt. 8.8 LCM 8#	
TG inc. 22 units	
Lost circulation (4188')	
Vis. 48 Wt. 8.8 LCM 8#	
Mix Mud + LCM	Lost circulation @ 4188', pull bit up to surface csng.









Sh, lt. to med. gry, dns. fissle.

Ls, lt. to med. gry, arg., f. xln, granular, no vis. porosity, no shows, no fluor, w/ gry. shale.

Sh, lt. to med. gry, dns. fissle.

Ls, lt. gry, buff, f. xln, v. dns, no vis. porosity, no shows, no fluor.

Ls, lt. to med. gry, arg., f. xln, granular, no vis. porosity, no shows, no fluor, w/ gry. shale.

Ls, lt. gry, buff, f. xln, v. dns, no vis. porosity, no shows, no fluor.

Ls, tan, m-c xln, brittle, oolitic, w/ fair dev. oomoldic porosity, no shows, dull fluor, no odor, no staining.

Ls, lt. gry, buff, f. xln, v. dns, no vis. porosity, no shows, no fluor.

Ls, lt. gry, buff, f-m xln, soft & chalky, fair dev. int. xln. porosity, no shows, no fluor, no odor, no staining.

Ls, lt. gry, buff, f-m xln, soft & chalky, poor dev. int. xln. porosity, no shows, no fluor, no odor, no staining.

Ls, buff, tan, fair dev. oomoldic porosity, no shows, few with dull fluor, fair odor, no staining.

Ls, buff, tan, f-m xln, poor to fair dev. int. xln, porosity, no shows, no fluor, sl. odor, no staining.

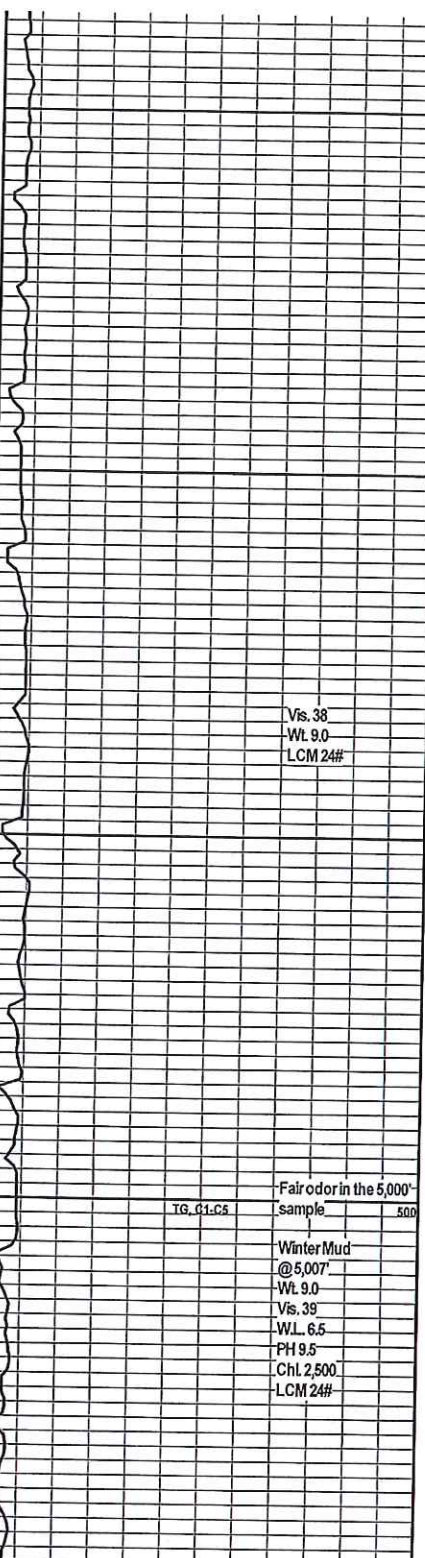
Ls, tan, gry-wh, buff, f-m xln, v. dns, poorly dev. to no vis. por., no shows, no fluor, no odor, no stn.

Ls, buff, tan, fair dev. oomoldic porosity, no shows, few with dull fluor, no odor, no staining.

Sh, lt. to med. gry, silty, fissle.

Ls, tan, gry-wh, buff, f-m xln, v. dns, poorly dev. to no vis. por., no shows, no fluor, no odor, no stn.

Ls, buff, tan, oolitic, foss, v. brittle, well dev. oomoldic porosity, no shows, no fluor, no



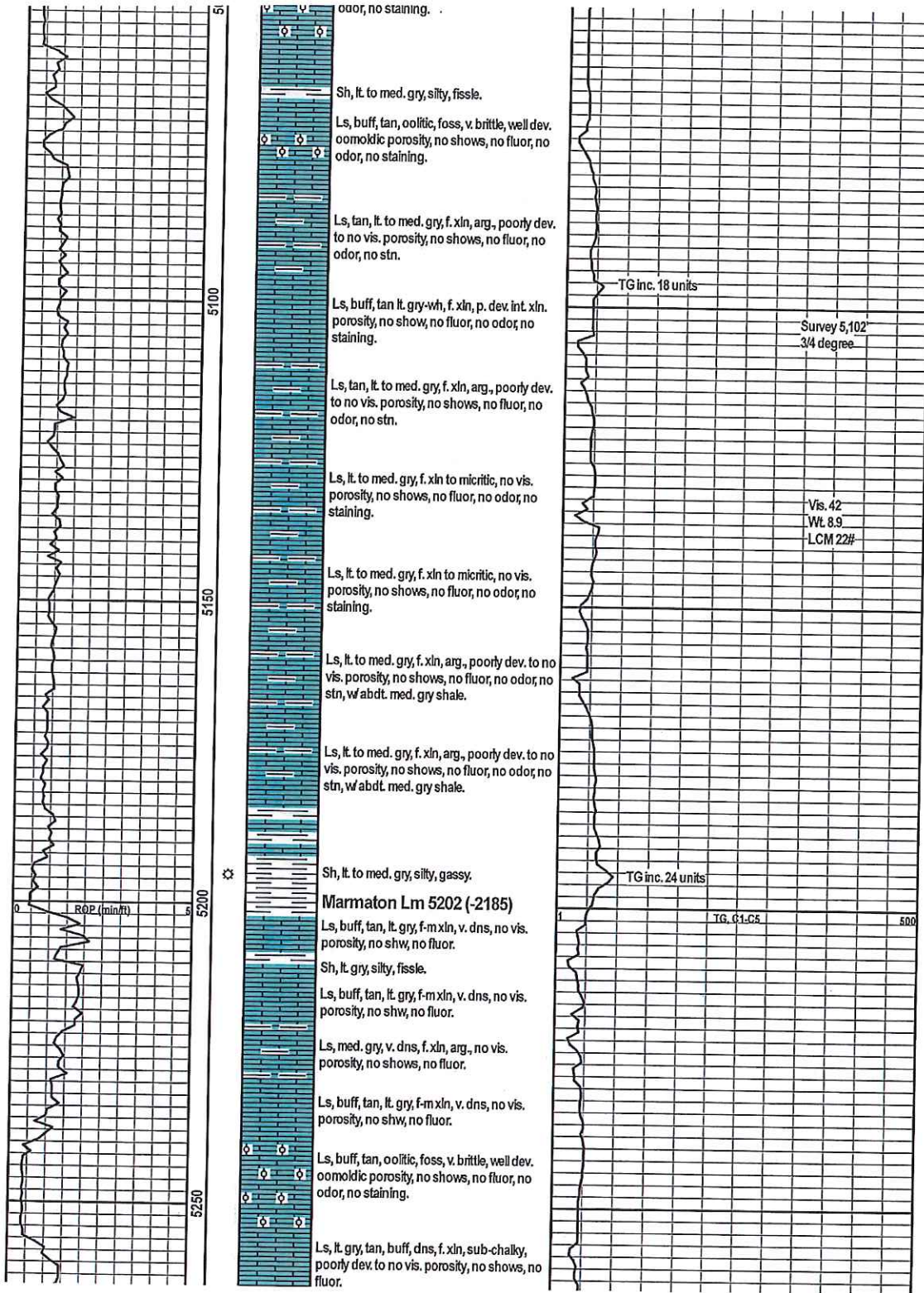
Vis. 38
Wt. 9.0
LCM 24#

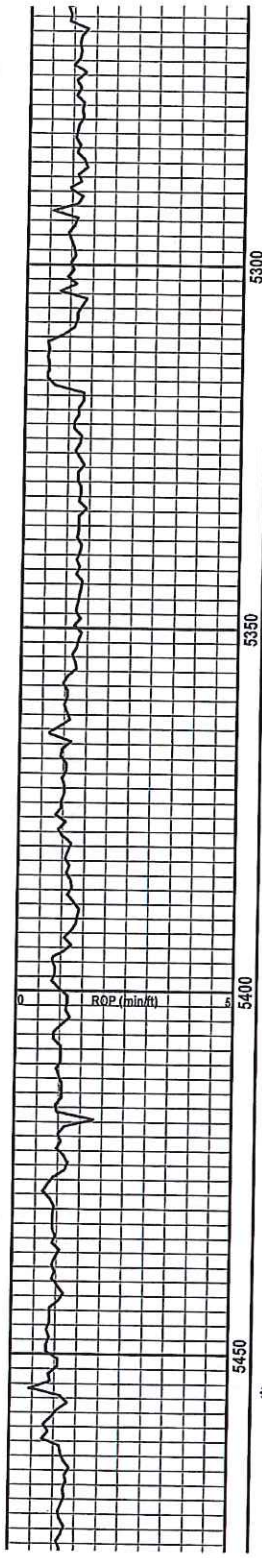
Fair odor in the 5,000' sample

TG, C1-C5

Winter Mud @ 5,007'

Wt. 9.0
Vis. 39
WL. 6.5
PH 9.5
Chl. 2,500
LCM 24#





Ls, tan, med. to drk. gry, f. xln, arg., poorly dev. to no vis. porosity, no shows, no fluor, no odor, no stn, w abdt. med. gry shale.

Ls, med. to drk. gry, f. xln, arg., poorly dev. to no vis. porosity, no shows, no fluor, no odor, no stn, w abdt. med. gry shale.

Sh, med. gry, silty, non-fissile.

Ls, lt. gry, tan, buff, dns, f. xln, granular, no vis. porosity, no shows, no fluor, no odor, no staining.

Ls, lt. gry, tan, buff, dns, f. xln. to micritic, granular, to no vis. porosity, no shows, no fluor, no odor, no staining.

Ls, lt. gry, tan, v. dns, f. xln. to micritic, no vis. porosity, no shows, no fluor, no odor.

Ls, lt. gry, tan, buff, dns, f. xln. to micritic, granular, to no vis. porosity, no shows, no fluor, no odor, no staining.

Ls, buff, cm. wh, f-m xln, p. dev. int. xln. porosity, chalky in part, no shows, chalky fluor, no odor.

Ls, buff, cm. wh, f-m xln, p. dev. int. xln. porosity, chalky in part, no shows, chalky fluor, no odor.

Ls, buff, cm. wh, f-m xln, granular, p. dev. int. xln. porosity, chalky in part, no shows, chalky fluor, no odor.

Ls, buff, cm. wh, f-m xln, granular, p. dev. int. xln. porosity, chalky in part, no shows, chalky fluor.

Sh, black, carb, bleeding gas.

Sh, med. gry, calcareous, fissile.

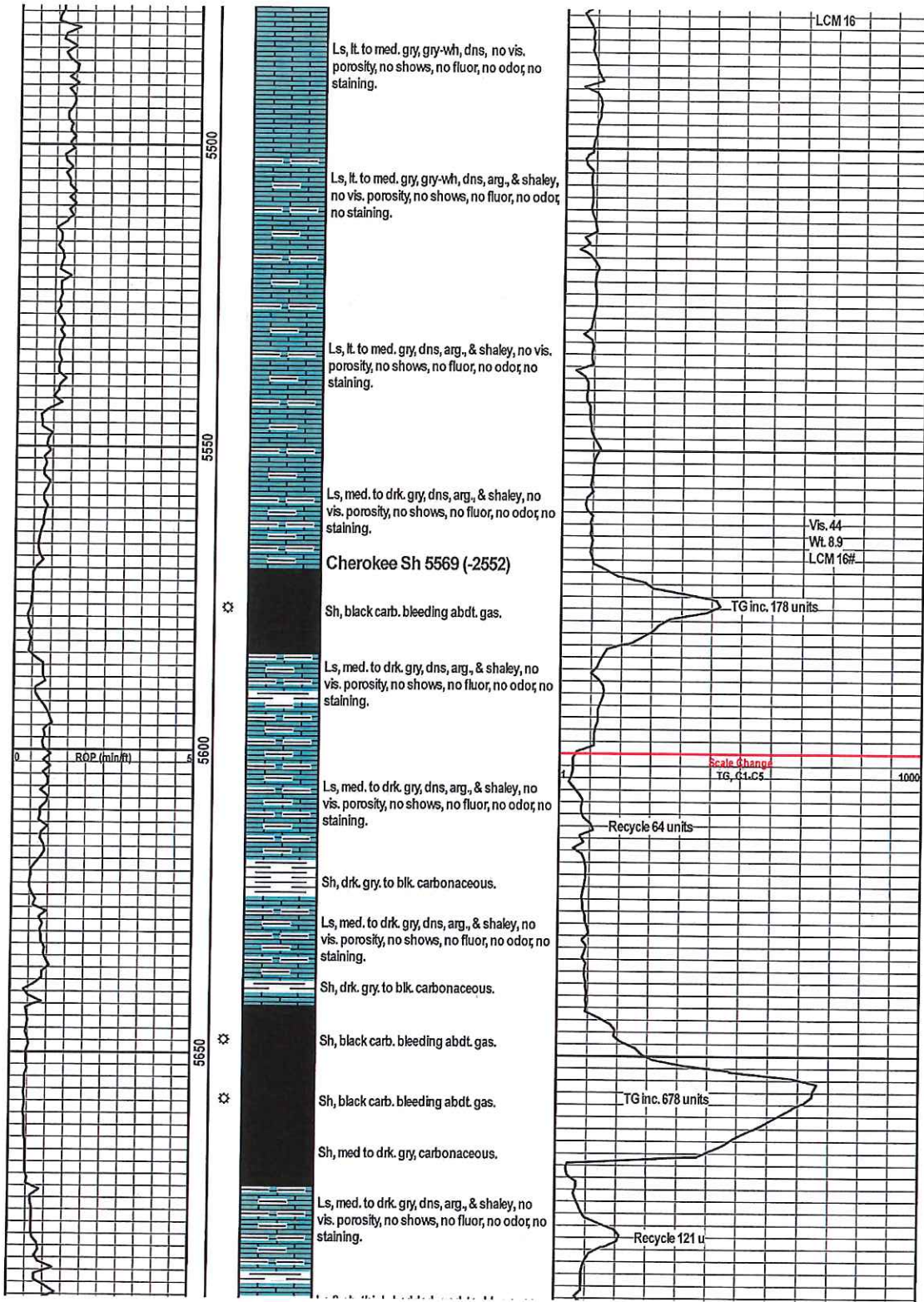
Ls, lt. to med. gry, gry-wh, dns, no vis. porosity, no shows, no fluor, no odor, no staining.

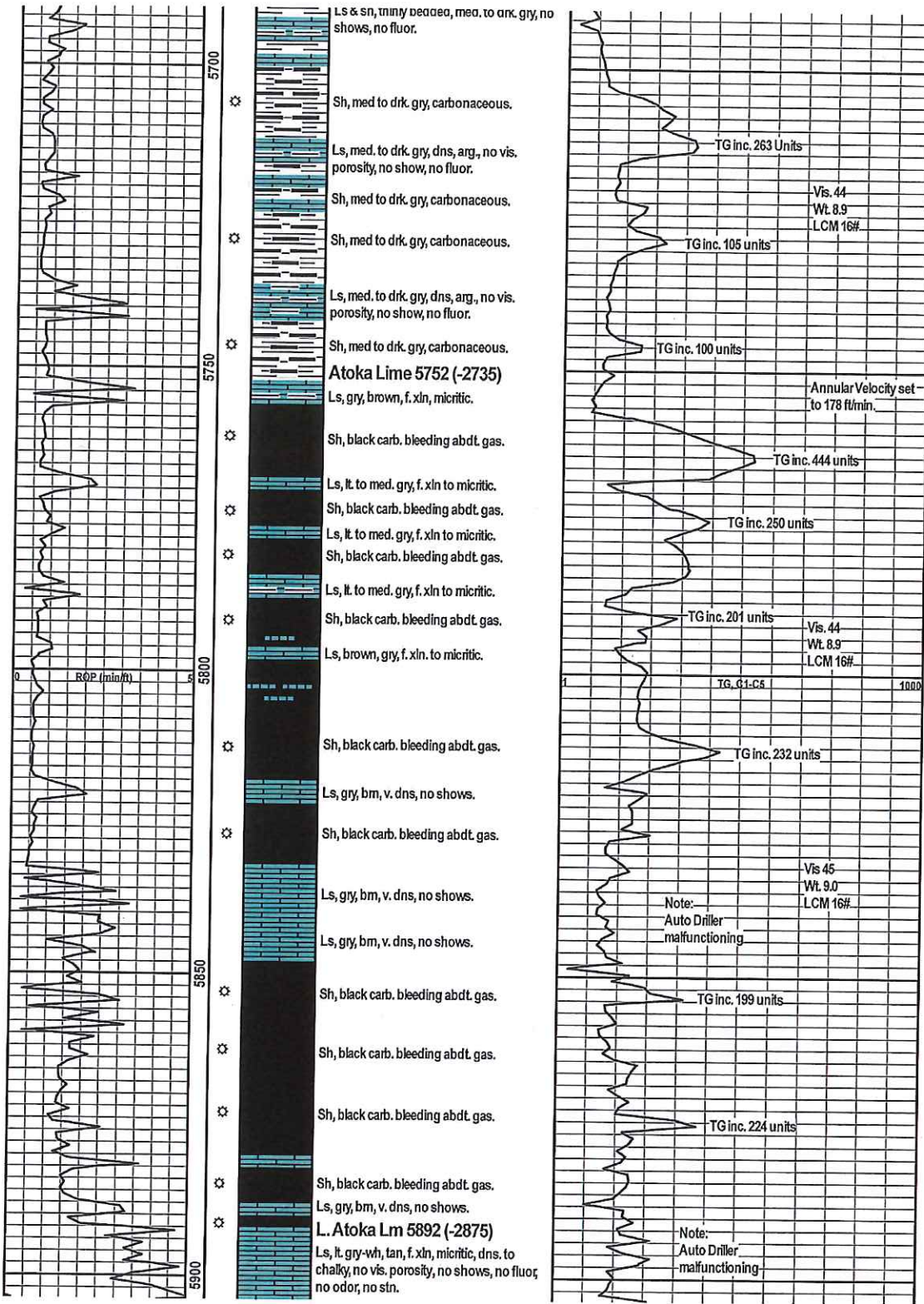
Vis. 40
WT 9.0
LCM 20#

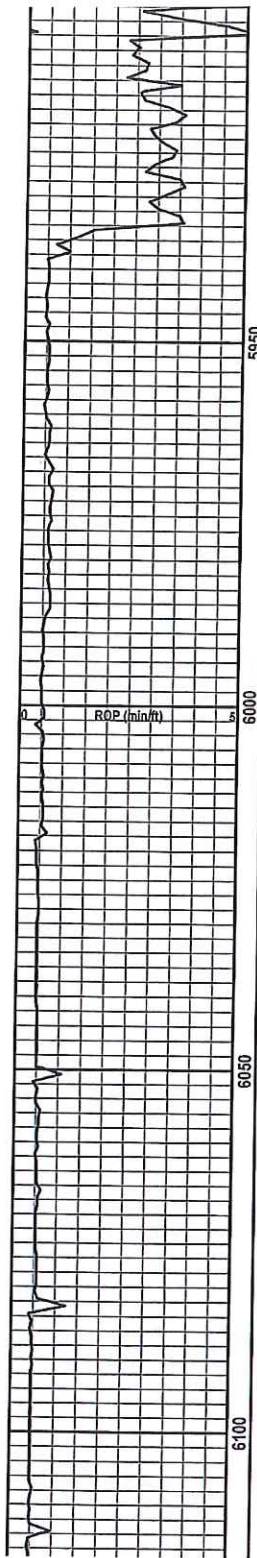
TG, C1-C5 500

TG inc. 27 units

Vis. 45
WT 8.8







Ls, lt. gry-wh, tan, f. xln, micritic, dns. to chalky, no vis. porosity, no shows, no fluor, no odor, no stn.

Ls, lt. gry-wh, tan, f. xln, micritic, dns. to chalky, no vis. porosity, no shows, no fluor, no odor, no stn, w/ lt. gry-wh. chert.

Morrow Shale 5934 (-2917)

Sh, lt. to drk. gry, silty, laminated, fissle, tr. pyrite.

Sh, lt. to drk. gry, micaceous, silty, tr. pyrite.

Sh, lt. to drk. gry, micaceous, silty, laminated, tr. pyrite.

Sh, med. gry, silty, fissle blades.

Sh, lt. to drk. gry, silty, laminated, fissle, tr. pyrite.

Sh, lt. to drk. gry, micaceous, silty, tr. pyrite.

Sh, lt. to drk. gry, micaceous, silty, laminated, tr. pyrite.

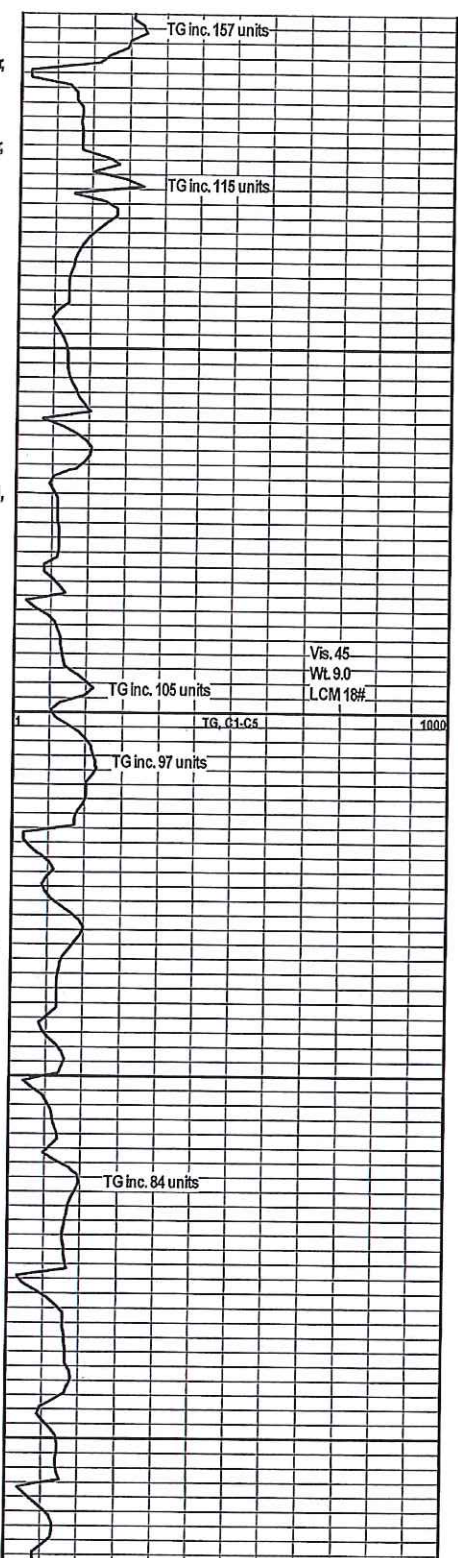
Sh, med. gry, silty, fissle blades.

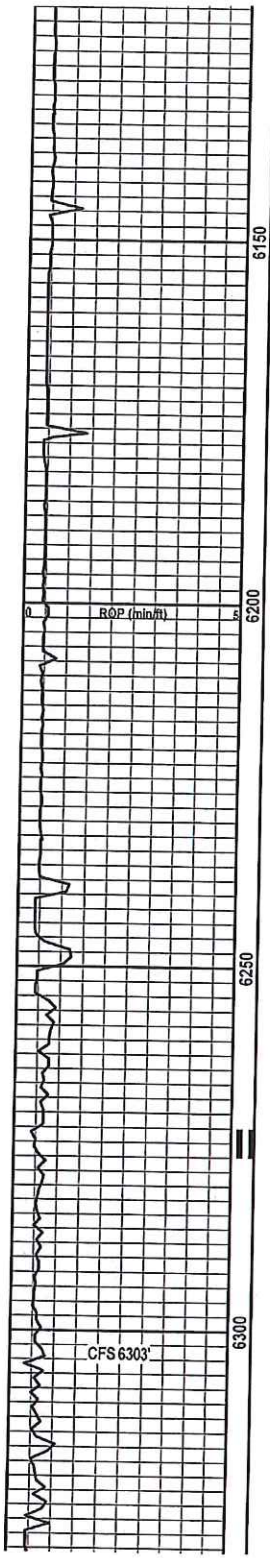
Sh, lt. to drk. gry, silty, laminated, fissle, tr. pyrite.

Sh, lt. to drk. gry, micaceous, silty, tr. pyrite.

Sh, lt. to drk. gry, micaceous, silty, laminated, tr. pyrite.

Sh, med. gry, silty, fissle blades.





6150

Sh, drk. gry, carbonaceous, gassy.

Sh, lt. to drk. gry, silty, laminated, fissle, tr pyrite.

Sh, lt. to drk. gry, micaceous, silty, tr. pyrite.

Sh, lt. to drk. gry, micaceous, silty, laminated, tr. pyrite.

Sh, med. gry, silty, fissle blades.

6200

ROP (min/hr)

Sh, lt. to drk. gry, silty, laminated, fissle, tr pyrite.

Sh, lt. to drk. gry, micaceous, silty, tr. pyrite.

Sh, lt. to drk. gry, micaceous, silty, laminated, tr. pyrite.

6250

Lwr. Mrw. Lm 6247 (-3230)
Ls, tan, m. xln, foss, no vis. porosity, no show, no fluor, glauc.

Lwr. Mrw. Lm 6254 (-3237)
Ls, tan, m. xln, w/ abdt. c. gr. sd, no vis. porosity, v. sil. show gas, no fluor, no odor or staining, glauc.

Lwr. Mrw. Sd 6268 (-3251)
Circulation was lost @ approximately 6,272-76' in the Lower Morrow Sand due to depleted reservoir pressures.

This loss of circulation was observed while circulating for samples @ 6,303'

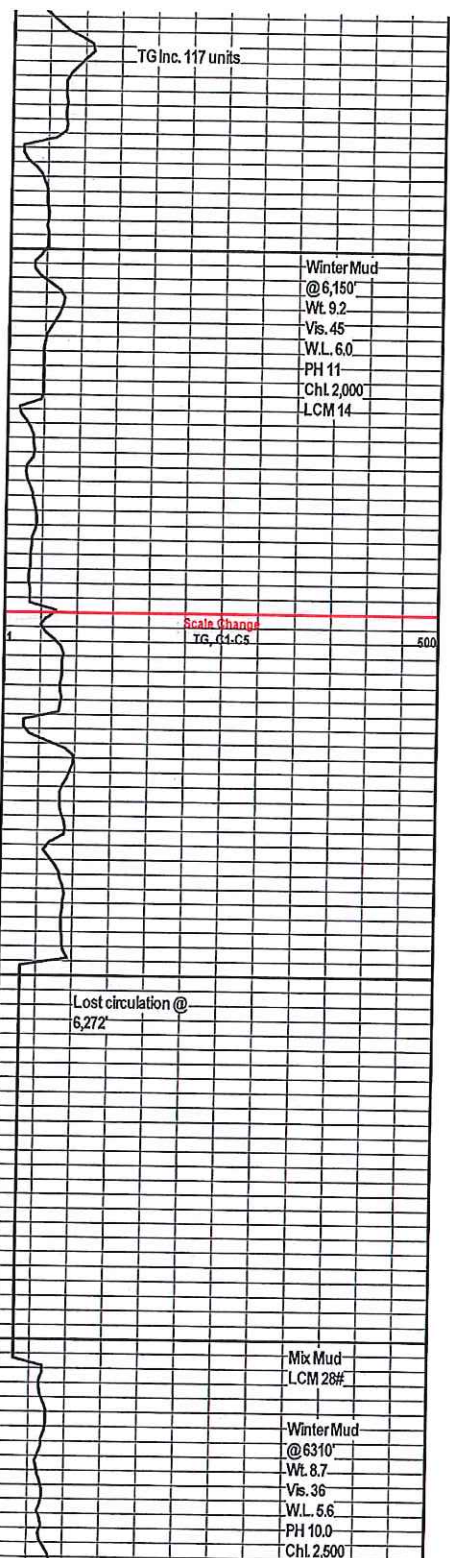
6300

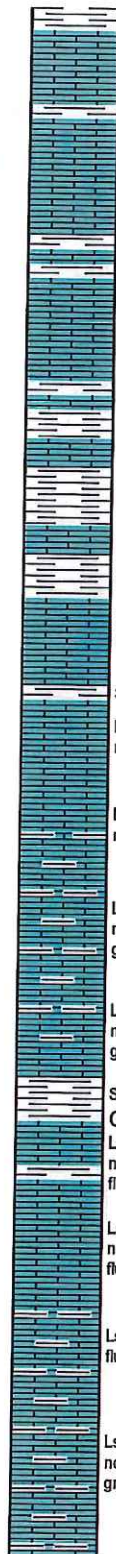
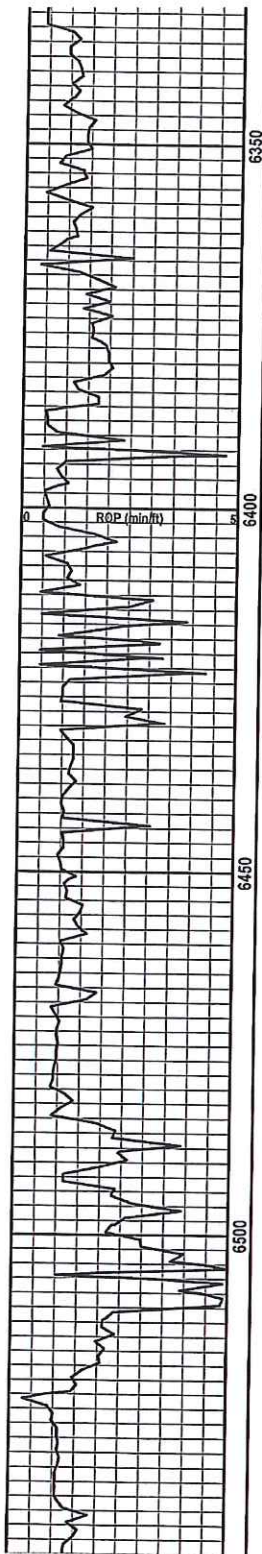
Sh, lt. to med. gry, calcareous.

Ls, buff, lt. gry, f-m xln, v. dns, no vis. porosity, no show, no fluor.

Sh, lt. to med. gry, calcareous.

Ls, buff, lt. gry, f-m xln, v. dns, no vis. porosity, no show, no fluor.





Sh, lt. to med. gry, calcareous.

Chester 'C' 6334 (-3317)
 Ls, buff, tan, f. xln, v. dns, foss, no vis. porosity, no shows, no fluor.
 Sh, lt. gry, soft, fissle, laminated
 Ls, buff, cm-wh, m. xln, foss, frag, poorly dev. int. foss. porosity, no shows, no fluor, no odor, no staining.
 Sh, lt. gry, soft, fissle, laminated
 Sh, lt. to med. gry, calcareous.
 Ls, buff, cm-wh, m. xln, foss, frag, poorly dev. int. foss. porosity, no shows, no fluor, no odor, no staining.
 Sh, lt. to med. gry, calcareous.
 Ls, buff, tan, f. xln. to micritic, no vis. porosity, no show, no fluor
 Sh, lt. to med. gry, calcareous.

Chester 'B' 6403 (-3386)
 Ls, buff, tan, f. xln. to micritic, no vis. porosity, no show, no fluor.
 Sh, lt. to med. gry, calcareous.
 Ls, buff, tan, f. xln. to micritic, no vis. porosity, no show, no fluor, no odor, no staining.
 Sh, lt. gry, silty, calcareous.
 Ls, buff, tan, f. xln. to micritic, no vis. porosity, no show, no fluor, no odor, no staining.
 Ls, buff, tan, f. xln. to micritic, no vis. porosity, no show, no fluor, no odor, no staining.
 Ls, lt. gry, f. xln, arg. & shaley, no vis. porosity, no show, no fluor, no odor, no staining, w/ gry. shale.
 Ls, lt. gry, f. xln, arg. & shaley, no vis. porosity, no show, no fluor, no odor, no staining, w/ gry. shale.
 Sh, lt. gry, soft, fissle, calcareous.

Chester 'A' 6484 (-3467)
 Ls, buff, tan, lt. green, f. xln to micritic, nodular in part, no vis. porosity, no show, no fluor, no odor, no stain.
 Ls, buff, tan, lt. green, f. xln to micritic, nodular in part, no vis. porosity, no show, no fluor, no odor, no stain.
 Ls, lt. gry, f. xln, no vis. porosity, no show, no fluor, no odor, no staining, w/ gry. shale.
 Ls, lt. gry, f. xln, arg. & shaley, no vis. porosity, no show, no fluor, no odor, no staining, w/ gry. shale.

