



Liberal Yard #1717 - Phone 620-624-2277 - 1700 S. Country Estates Road, Liberal KS 67901

**PRESSURE PUMPING Job Log**

Customer:	Berexco LLC	Cement Pump No.:	38117,19919 10Hrs	Operator TRK No.:	78868 Angel
Address:	2020 N Bramblewood	Ticket #:	1718 19709 L	Bulk TRK No.:	37712 Oscar 14354
City, State, Zip:	Wichita, Kansas 67206-1094	Job Type:	Z-42 Cement - Surface Casing		
Service District:	1718 - Liberal, Ks	Well Type:	OIL / GAS		
Well Name and No.:	Dennis Unit # 5-3	Well Location:	03-29S-33W	County:	Haskell State: Kansas

Type of Cmt	Sacks	Additives	Truck Loaded On		
A-Con	460	1/4# JSK Cello Flake	37712 Oscar	Front	Back
AA-2	205	10%GYP, 10%Salt, 5# Gilsonite, .5# Fluid Loss, 1/4# Defoamer	14354	Front	Back
				Front	Back

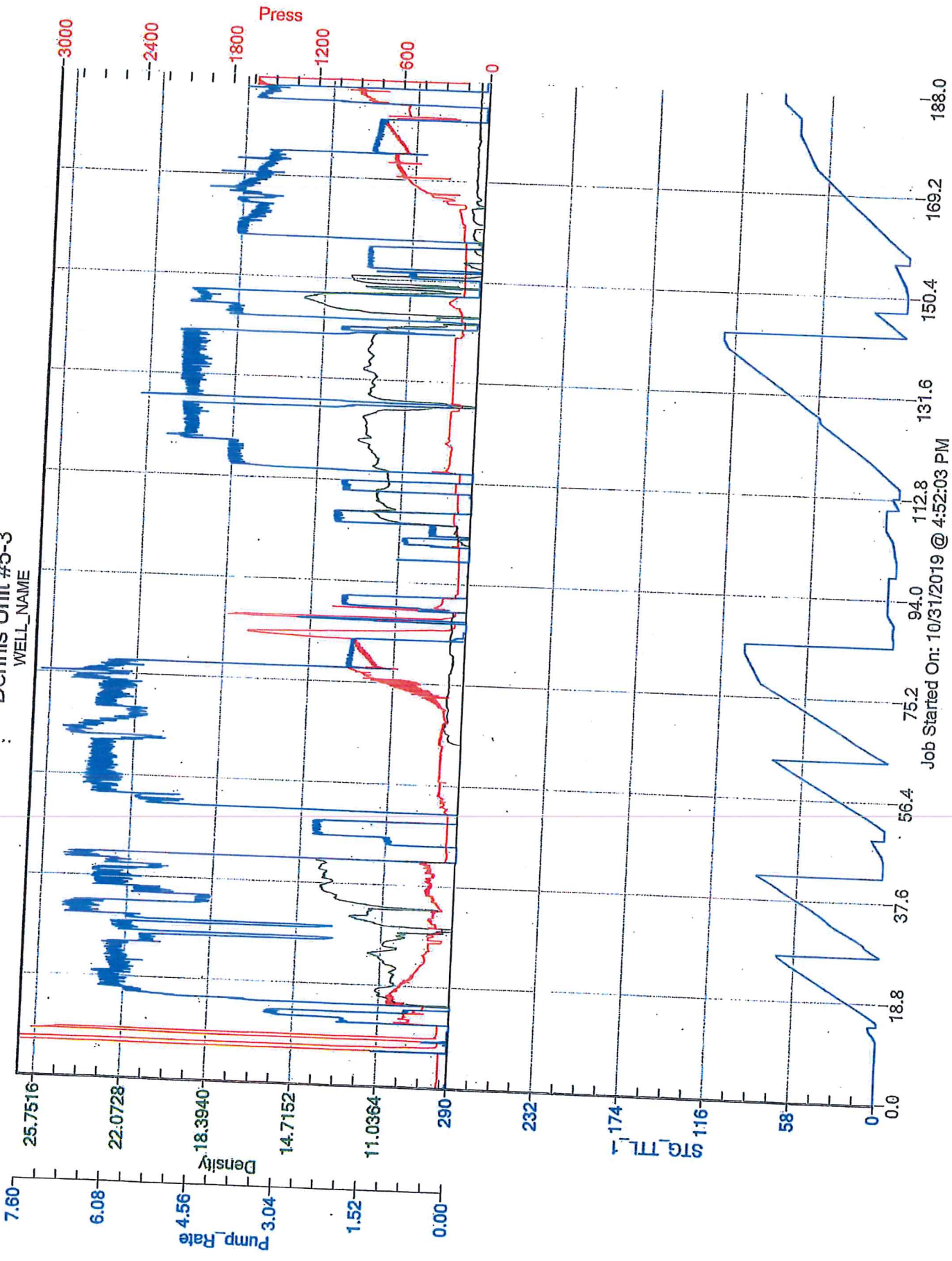
Lead/Tail:	Weight #1 Gal.	Cu/Ft/sk	Water Requirements	CU. FT.	Man Hours / Personnel	
<b>Lead:</b>	11.8	2.56	15.33	1177.6	Man Hours:	70
<b>Tail:</b>	14.8	1.51	6.65	309.55	# of Men on Job:	4

Time (am/pm)	(BPM)	Volume (BBLs)	Pumps		Pressure (PSI)		Description of Operation and Materials
			T	C	Tubing	Casing	
0300							On Location
0315							Safety Meeting
0400							Rig Up
1700					3000		Pressure Test Line
1706	5.7	66.1				430	Pump Lead 145sx @ 11.8#/GAL
1720	5.7	41.7				170	Pump Tail 155sx @ 14.8#/GAL
1735	4	7				ZERO	Shut Down Wash to Pit -- Drop L.D. Plug
1741	5.5	57.6 H2o				150	Displace W/ H2O
1753	2.1	76.6 Mud				800	Displace W/ Mud
1815						1500	Land / Pressure Plug -- Release Back -- Float Held
1825							Drop Trip Bomb ( DV Opening Tool )
1850	3	5				950	DV Tool Opened Circulate Well w/ Mud
2300	3	22.8				ZERO	Pump Rat And Mouse Hole 50sx
2312		120.8					Pump Lead 265sx @ 11.8#/GAL
2335		13.4					Pump tail 50sx @ 14.8#/GAL
2345							Shut Down Wash to Pit -- Drop Closing Plug
2355	4	76.6				750	Displacement W/ H2o
0030	2					950	Land / Pressure Plug -- Release Back -- D.V. Held
0035							Rig Down
							Job Completed
							Thank You

Size Hole	7 7/8	Depth			TYPE	Cement Plug Container	
Csg.	5.5 15.5	Depth	5683'	L.D. Plug	5641'	Packer	Depth
D.V. Tool	3219'	Shoe jt	42			Retainer	Depth
Diff psi 1st	797.7psi	Diff psi 2nd	578.8psi			Perfs	CIBP

Customer Signature: *Dale Thompson* Basic Representative: Angel Echevarria  
 Basic Signature: *[Signature]*  
 Date of Service: 10/30/2019

Dennis Unit #5-3  
WELL\_NAME



Job Started On: 10/31/2019 @ 4:52:03 PM