

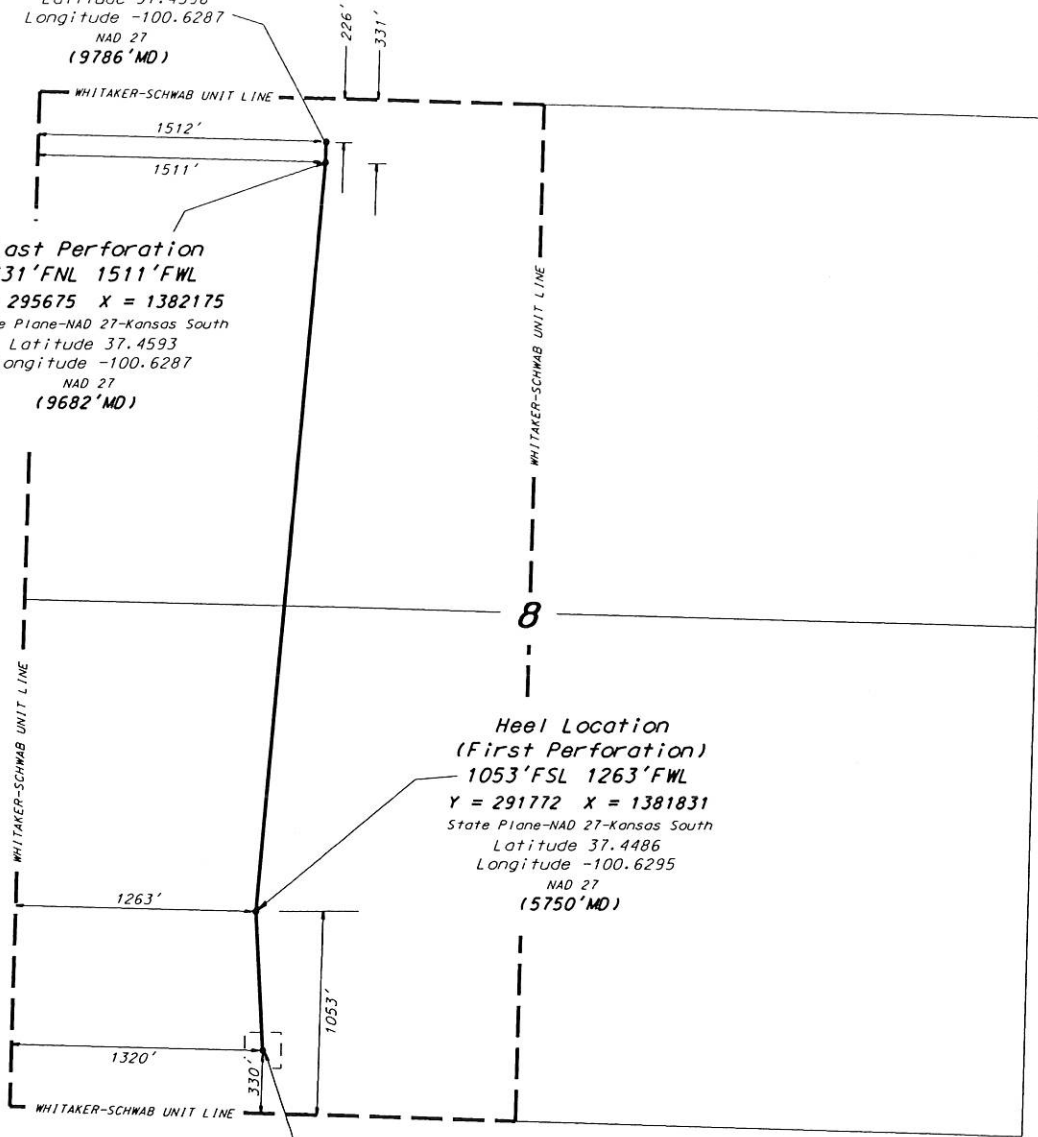
MCCOY PETROLEUM CORPORATION  
 WHITAKER-SCHWAB LEASE  
 W. 1/2, SECTION 8, T30S, R30W  
 MEADE COUNTY, KANSAS  
 (AS-DRILLED PLAT)

**Toe Location**  
 226'FNL 1512'FWL  
 Y = 295780 X = 1382179  
 State Plane-NAD 27-Kansas South  
 Latitude 37.4596  
 Longitude -100.6287  
 NAD 27  
 (9786'MD)

**Last Perforation**  
 331'FNL 1511'FWL  
 Y = 295675 X = 1382175  
 State Plane-NAD 27-Kansas South  
 Latitude 37.4593  
 Longitude -100.6287  
 NAD 27  
 (9682'MD)

**Heel Location**  
 (First Perforation)  
 1053'FSL 1263'FWL  
 Y = 291772 X = 1381831  
 State Plane-NAD 27-Kansas South  
 Latitude 37.4486  
 Longitude -100.6295  
 NAD 27  
 (5750'MD)

**Surface Location**  
 Whitaker-Schwab 1H-8X  
 330'FSL 1320'FWL  
 Ground Elevation = 2814  
 Y = 291048 X = 1381872  
 State Plane-NAD 27-Kansas South  
 Latitude 37.446611  
 Longitude -100.629356  
 NAD 27



\* Controlling data is based upon the best maps and photographs available to us and upon a regular section of land containing 640 acres.

\* Approximate section lines were determined using the normal standard of care of oilfield surveyors practicing in the state of Kansas. The section corners, which establish the precise section lines, were not necessarily located, and the exact location of the drillsite location in the section is not guaranteed. Therefore, the operator securing this service and accepting this plat and all other parties relying thereon agree to hold Central Kansas Oilfield Services, Inc., its officers and employees harmless from all losses, costs and expenses and said entities released from any liability from incidental or consequential damages.

\* Elevations derived from National Geodetic Vertical Datum.

Date December 12, 2019