



# VINCENT OIL CORPORATION



Scale 1:240 Imperial

Well Name:	PERKINS 2-3	
Surface Location:	540' FNL 2520' FEL 3-29S-23W	
Bottom Location:		
API:	15-057-21027-00-00	
License Number:	5004	
Spud Date:	8/23/2019	Time: 5:00 PM
Region:	MID CONTINENT	
Drilling Completed:	9/3/2019	Time: 1:55 AM
Surface Coordinates:	370' FNL & 2520' FEL	
Bottom Hole Coordinates:		
Ground Elevation:	2514.00ft	
K.B. Elevation:	2526.00ft	
Logged Interval:	4200.00ft	To: 5325.00ft
Total Depth:	5325.00ft	
Formation:	MISSISSIPPIAN	
Drilling Fluid Type:	CHEMICAL MUD	

### OPERATOR

Company:	VINCENT OIL CORPORATION	
Address:	200 W DOUGLAS AVE	
	STE 725	
	WICHITA, KS 67202	
Contact Geologist:	TOM DUDGEON	
Contact Phone Nbr:	3162623573	
Well Name:	PERKINS 2-3	
Location:	540' FNL 2520' FEL 3-29S-23W	
API:	15-057-21027-00-00	
Pool:	DEVELOPMENT	Field: MULBERRY CREEK
State:	KS	Country: USA

### CONTRACTOR

Contractor:	DUKE DRILLING CO., INC.	
Rig #:	1	
Rig Type:	MUD ROTARY	
Spud Date:	8/23/2019	Time: 5:00 PM
TD Date:	9/3/2019	Time: 1:55 AM
Rig Release:	9/4/2019	Time: 2:15 AM

### LOGGED BY

Company: VINCENT OIL CORPORATION  
Address:

Phone Nbr: 316.262.3573  
Logged By: Geologist

Name: TOM DUDGEON

### ELEVATIONS

K.B. Elevation: 2526.00ft      Ground Elevation: 2514.00ft  
K.B. to Ground: 12.00ft

### SURFACE CO-ORDINATES

Well Type: Vertical  
Longitude: -99.821841316  
Latitude: 37.556262065  
N/S Co-ord: 370' FNL  
E/W Co-ord: 2520' FEL

### DRILLING FLUID SUMMARY

Type	Date	From Depth	To Depth
CHEMICAL MUD	8/27/2019	3790.00ft	5325.00ft

### CASING SUMMARY

	Surface	Intermediate	Main		
Bit Size	12.25 in		7.88 in		
Hole Size	12.25 in		7.88 in		
	Size	Set At	Type	# of Joints	Drilled Out At
Surf Casing	8.625 in	648 ft	23#	15	8/24/2019 8:00 AM
Int Casing					
Prod Casing	4.5 in	5323 ft	11.6#	123	9/4/2019 12:15 AM

### CASING SEQUENCE

Type	Hole Size	Casing Size	At
SURFACE	12.25 in	8.63	648.00 ft
COMPLETION	7.88 in	4.50	5323.00 ft

### OPEN HOLE LOGS

Logging Company: ELI WIRELINE  
Logging Engineer: JASON CAPPELLUCCI  
Truck #: 3802  
Logging Date: 9/3/2019      Time Spent: 5  
# Logs Run: 4      # Logs Run Successful: 4

### LOGS RUN

Tool	Logged Interval	Logged Interval	Hours	Remarks	Run #
DUAL INDUCTIVE	0.00ft	5326.00ft	2.00		1
NDE/NEU/PE	4250.00ft	5326.00ft	2.00		1
MICRO	4250.00ft	5326.00ft	3.00		2
SONIC	0.00ft	5326.00ft	3.00		2

### LOGGING OPERATION SUMMARY

Date	From	To	Description Of Operation
8/27/2019	0.00ft	5326.00ft	LOGS RUN SUCCESSFULLY

### TOTAL DEPTH

Measurement Type:	Measurement Depth:	TVD:
RTD	5325.00	5326.00
LTD	5326.00	5326.00

### NOTES

#### REFERENCE WELLS

A  
Vincent Oil Corporation PERKINS #1-3

Perkins 2-3	Tops			Elevation	2526	KB
			Struct.			
Top	Depth	Datum	Perkins 1-3		LOG TOPS	LOG DATUM
HBR	4338	-1812	1		4335	-1809
BL	4476	-1950	2		4474	-1948
LANS	4487	-1961	2		4484	-1958
STARK	4822	-2296	1		4822	-2296
HUSH	4862	-2336	FLAT		4862	-2336
BKC	4947	-2421	FLAT		4944	-2418
MARM	4966	-2440	FLAT		4962	-2436
PAW	5036	-2510	5		5035	-2509
LAB	5064	-2538	4		5063	-2537
CHER	5085	-2559	4		5086	-2560
B/PENN	5181	-2655	4		5183	-2657
MISS	5207	-2681	3		5206	-2680

Rocks classified using the Dunham Classification

Mudstone (MS)

a mud-supported carbonate rock containing <10% grains

Wackestone (WS)

a mud-supported carbonate lithology containing >10% grains

Packstone (PS)

a grain-supported fabric containing 1% or more mud-grade fraction

**STRAIGHT HOLE SURVEY**

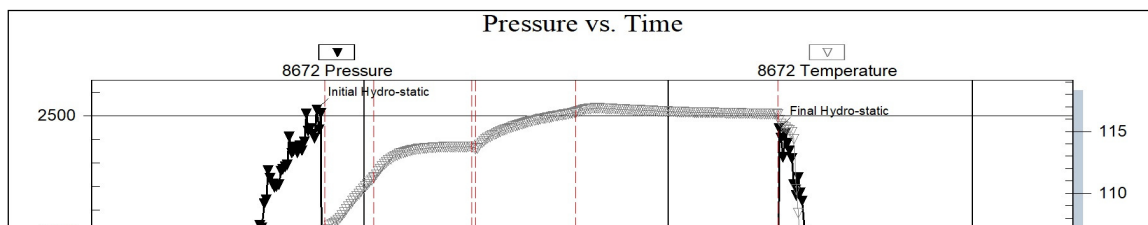
DEGREE	DEPTH
3/4	650'
3/4	1141'
1	1678'
1-1/4	2183'
1	2625'
3/4	3127'
3/4	3631'
1	4165'
1	5050'
1	5325'

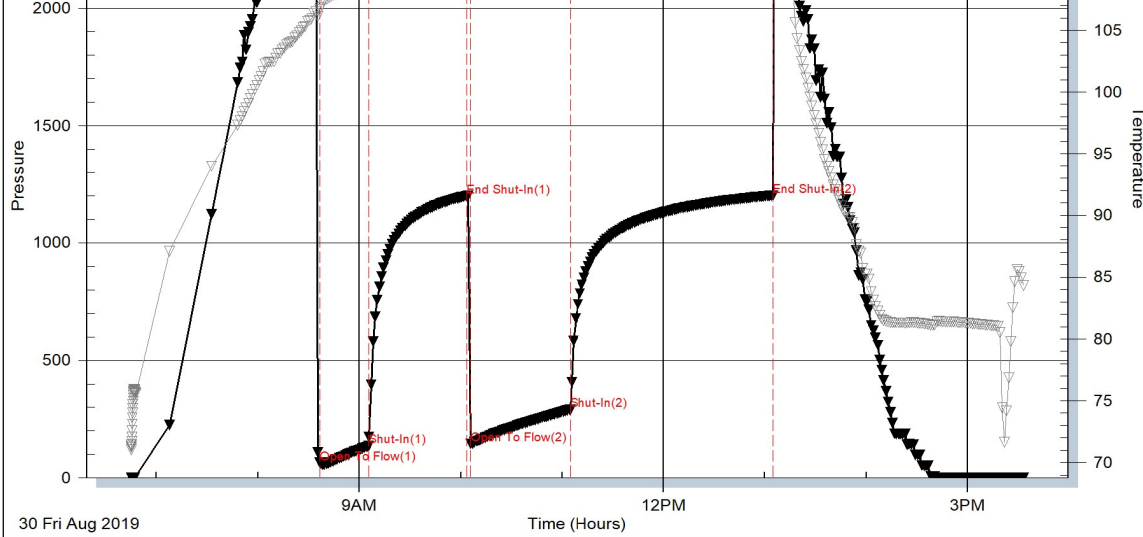
SURFACE CEMENT 125sx MDC(3% CC & 1/2# Flo-seal/sx) and 150sx Common(2%Gel, 3% CC & 1/2# Flo-seal/sx), plug down @ 4:45 AM 8/24/82019

PRODUCTION CEMENT 175 Sx Pro-C cement, Rigged up cementers and plugged the rathole with 30 sx and plugged the mouse hole with 20 sx. ) displaced with 82 bbl 2% KCL water, Plug landed at 1200# and bumped to 1600# and held. Plug was down at 12:15 AM 9/4/2019.

**DST #1**

Serial #: 8672      Inside      Vincent Oil Corporation      Perkins #2-3      DST Test Number: 1





Trilobite Testing, Inc

Ref. No: 65898

Printed: 2019.09.06 @ 09:41:21

### DST #2

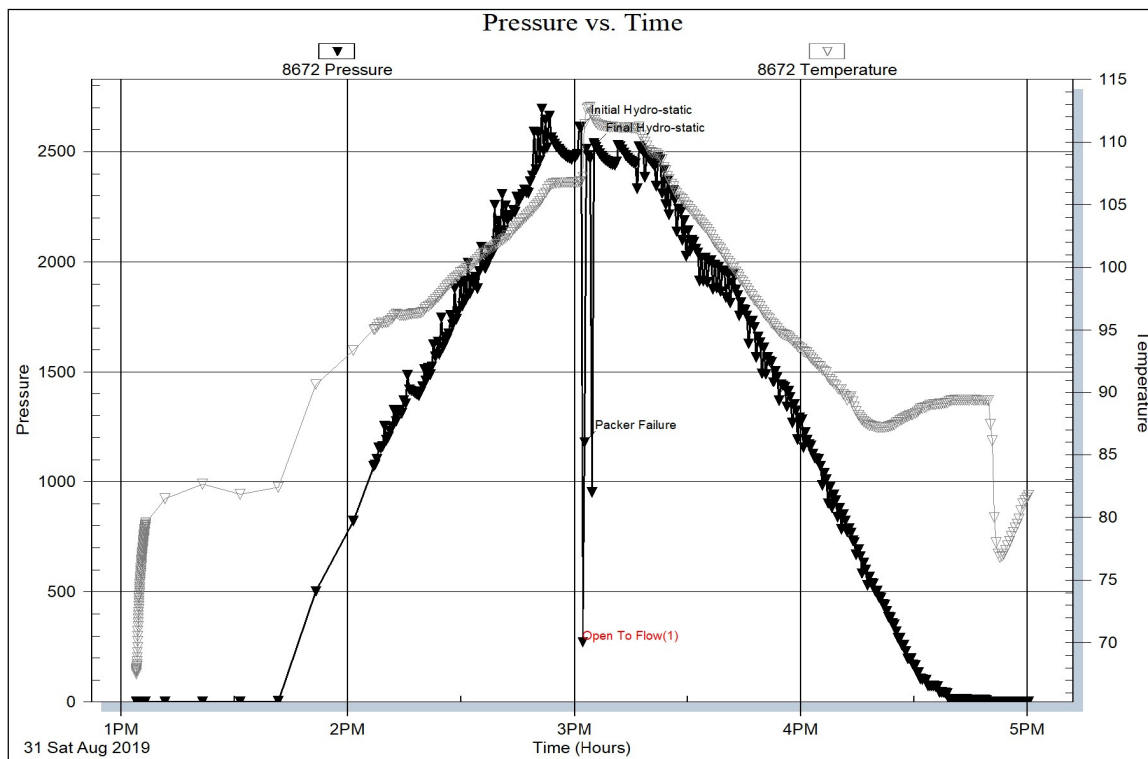
Serial #: 8672

Inside

Vincent Oil Corporation

Perkins #2-3

DST Test Number: 2



Trilobite Testing, Inc

Ref. No: 65899

Printed: 2019.09.06 @ 09:40:53

### DST #3

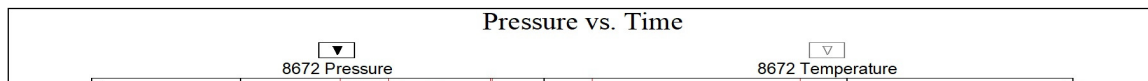
Serial #: 8672

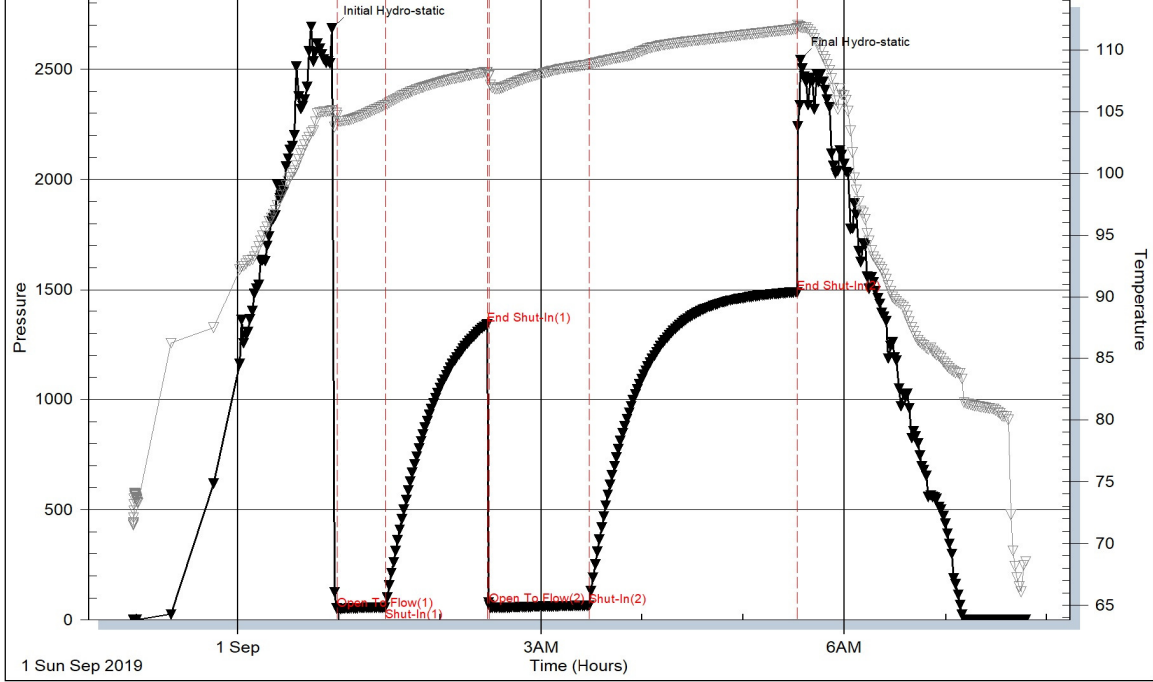
Inside

Vincent Oil Corporation

Perkins #2-3

DST Test Number: 3





Trilobite Testing, Inc

Ref. No: 65900

Printed: 2019.09.06 @ 09:40:26

### DST #4

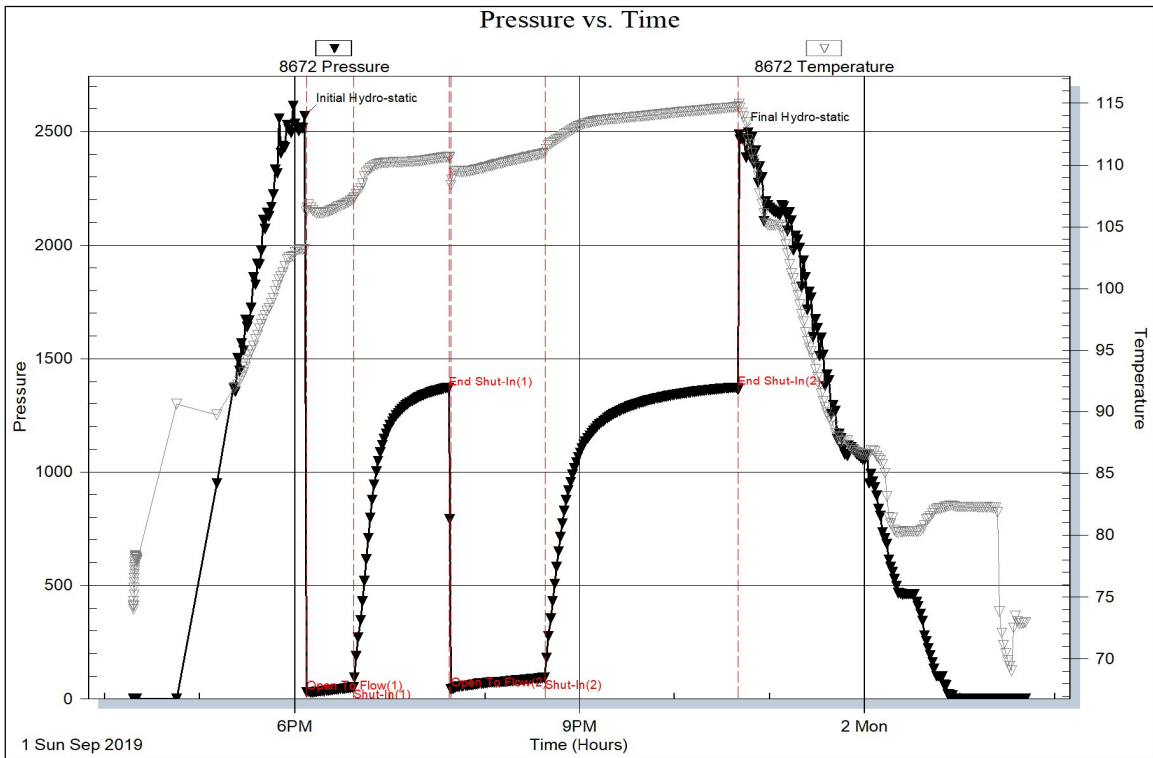
Serial #: 8672

Inside

Vincent Oil Corporation

Perkins #2-3

DST Test Number: 4

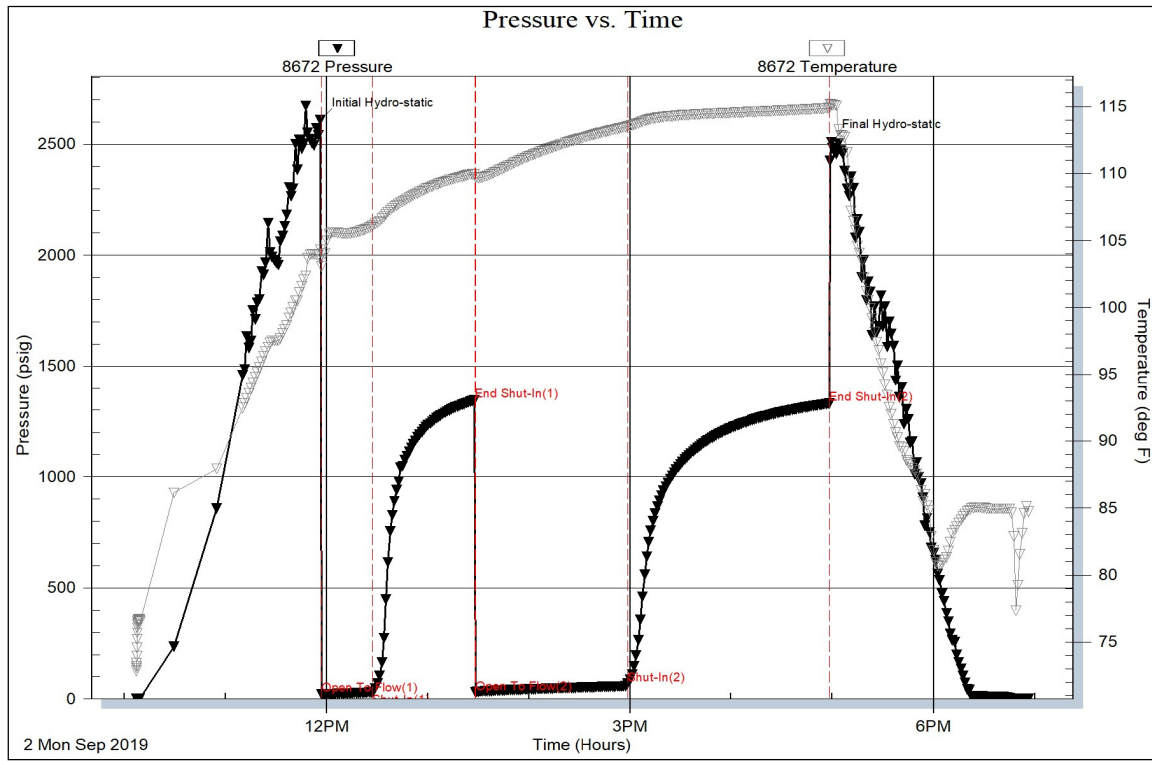


Trilobite Testing, Inc

Ref. No: 65901

Printed: 2019.09.06 @ 09:37:50

### DST #5



Trilobite Testing, Inc

Ref. No: 65902

Printed: 2019.09.06 @ 09:39:42

**ROCK TYPES**

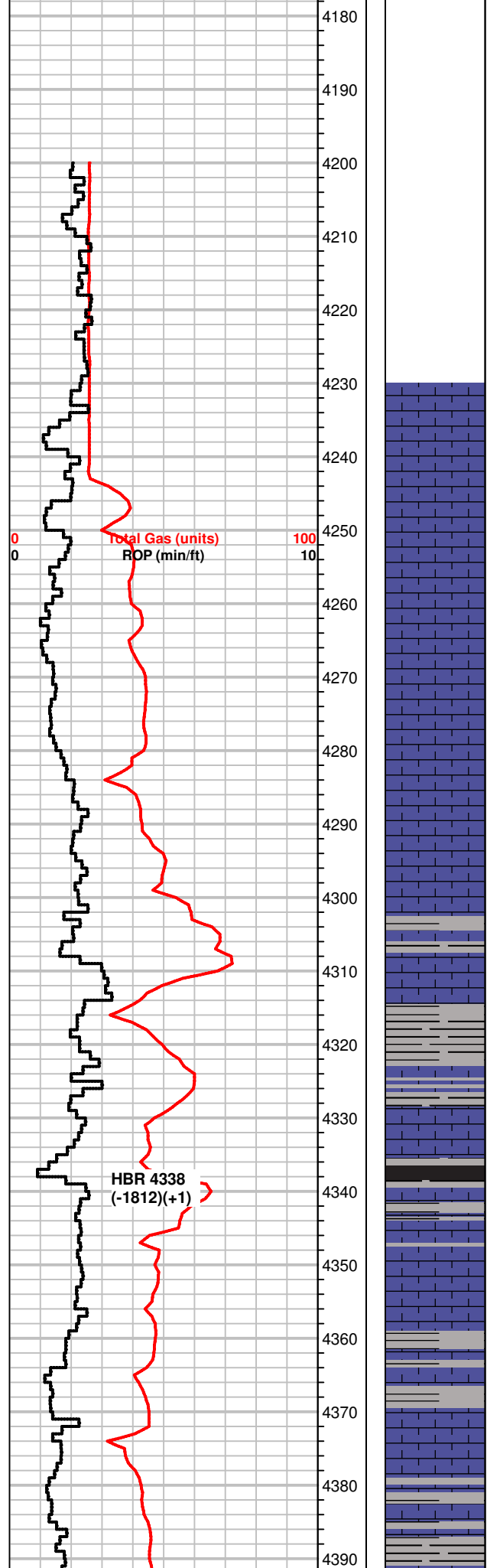
- △ Cht
- ▨ Dolsec
- ▨ Lmst fw>7
- ▨ Shblk
- Coal
- ▨ Lmst fw<7
- ▨ Shgy
- ▨ Shcol

**OTHER SYMBOLS**

- |   |  |   |
|---|--|---|
| <p><b>POROSITY TYPE</b></p> <ul style="list-style-type: none"> <li>× Intercrystalline</li> <li>φ Interoolitic</li> <li>V Vuggy</li> <li>P Pinpoint</li> <li>∩ Moldic</li> <li>O Organic</li> <li>F Fracture</li> <li>e Earthy</li> <li>□ Fenestral</li> </ul> | <p><b>OIL SHOWS</b></p> <ul style="list-style-type: none"> <li>● Even Stn</li> <li>● Spotted Stn 50 - 75 %</li> <li>● Spotted Stn 25 - 50 %</li> <li>○ Spotted Stn 1 - 25 %</li> <li>○ Questionable Stn</li> <li>D Dead Oil Stn</li> <li>■ Fluorescence</li> </ul> | <p><b>INTERVALS</b></p> <ul style="list-style-type: none"> <li>■ Core</li> <li>· DST</li> </ul> |
|---|--|---|

Printed by GEOstrip VC Striplog version 4.0.8.15 (www.grsi.ca)

Curve Track #01	Depth   Intervals	Porosity Types	Interpreted Lithology	Oil Shows	Geological Descriptions	Comment
<p>Total Gas (units) ———</p> <p>ROP (min/ft) ———</p>	<p>1:240 Imperial</p> <p>0 Total Gas (units) 100</p> <p>0 ROP (min/ft) 10</p>					
	4160					
	4170				<p>REFERENCE WELL</p> <p>A</p> <p>Vincent Oil Corporation PERKINS #1-3</p> <p>1325' FNL &amp; 2387' FEL</p> <p>Sec. 3-29S-23W</p>	



MS-WS, crm to tan, f-xln to chalky, dense to friable pcs, fossils, scatt SH, grays

MS-WS, crm to gray, tna, chalky to fossilif, scatt vf-gr oolitic pcs, rare glauc specs, SH, grays

MS, crm to lt. gray, A.A., chalky, NS

MS-WS, brn to crm, lt. gray pcs scatt., firm, fossilif., NS  
SH, grays, brn

WS-MS, crm to tan, f-xln to chalky, soft to firm, rare mottled pcs, SH gray, silty pcs

MS-WS, crm to off wht, A.A., mostly chalky, scatt fossils, NS

MS-WS. off wht to crm, chakly to fossilif., NS, rare SH, blk, sandy, pyrite

SH, blk to dk. grays, slit carb. to silty, green sandy pcs, MS crm to off wht, chalky to f-xln, dense to soft, fossils scatt., NS

SH, A.A.,  
MS, crm to off wht, chalky to f-xln, A.A., lesser amount, some Chert, wht

SH, blk to dk. grays, blocky, carb in pt., Influx, MS-WS, crm to lt. gray, f-xln to chalky, soft/firm, scatt fossils, NS

SH, blk to gray, lesser  
MS, crm to off wht, chalky to f-xln, A.A., NS

MS, rare WS, crm to gray, dk. specs, f-xln, fossils scatt, chalky in pt., Chert, wht to crm

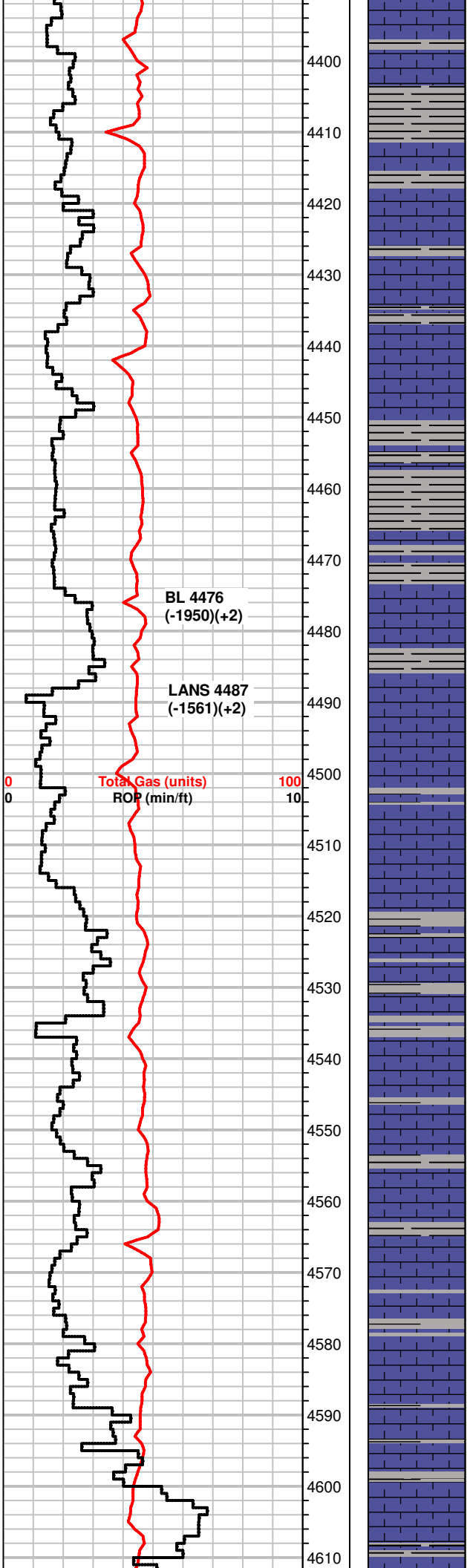
scatt SH, blk to red, yellow, sandy, green,  
MS-WS, crm to tan, f-xln, sandy to silty pcs, NS

SH, gray to green, MS, mic to f-xln, hard, calcite rhombs, Chert, tan, NS

MS, off wht to crm, f-xln, to mic-xln, dense, some m-xln, oolitic/fossilif. scatt., same chalky, NS, mineral fluor, some SH, A.A.

SH, blk to gray, scatt, MS-WS, crm to lt. gray/off wht, f-xln to chalky, scatt sandy pcs, micro oolitic pcs, dull fluor, NS

MS-WS, crm to gray, mic-xln to chalky, some fossilif pcs, denswe to



soft, NS, dull fluor, Chert, opaque, scatt SH, gray

SH, gray to rare dk. grays, green, silty to sandy, MS, crm to tan, f-xln to chalky, scatt fossils, shaly, pyrite, dense, NS

MS, crm to gray, shaly to silty, fossils scatt, SH, green to gray, Chert, brn to wht

WS-MS, crm to tan, speckled to mottled pcs common, t to m-xln, some chalky, SH, gray to green

lesser SH, A.A., MS-WS, crm to tan, f-xln to chalky, hard to firm, sandy pcs, some fossils, NS

WS-MS, crm to lt. tan, vf-gr oolitic to mic-xln, dense to friable, hard, chalky mtrx in pt., Chert, tan SH, blk to grays

WS-MS, A.A. mostly chalky pcs, inc. in SH, gray to green

SH, blk to green, fresh, MS, tan to crm, vf-xln to f-xln, dense to friable pcs, fossils, NS

MS, crm to lt. gray, mic-xln to f-xln, dense to chalky, fossils, A.A. calcite, SH, grays to green, blk rare

Inc. in SH, gray to green, becoming darker  
MS, tan to crm, f-xln sli.fossilif., NS

MS-WS, lt. gray to crm, chalky to f-xln, fossilif., mottled pcs, firm to friable, NS, scatt SH, grays

MS, crm, f-xln to chalky, soft, NS, SH, grays to green scatt.

MS, crm to tan, f-xln to chalky, inc in dense pcs, fossils, NS, SH, gray

MS-WS, crm to tan, f-xln to chalky, inc in SH, grays

MS, gray to crm, f-xln to m-xln, dense, calcite, NS, dull fluor scatt SH, grays

MS, crm to tan, mic-xln, chalky, some massive txt to earthy pcs, firm to dense, dull fluor, NS, SH, gray

MS, gray to crm, f-xln, dense, chalky in pt., Chert, tan, SH, green to grays

MS-WS, gray to crm, chalky to m-xln, earthy pcs, gritty, some dense, most friable, NS

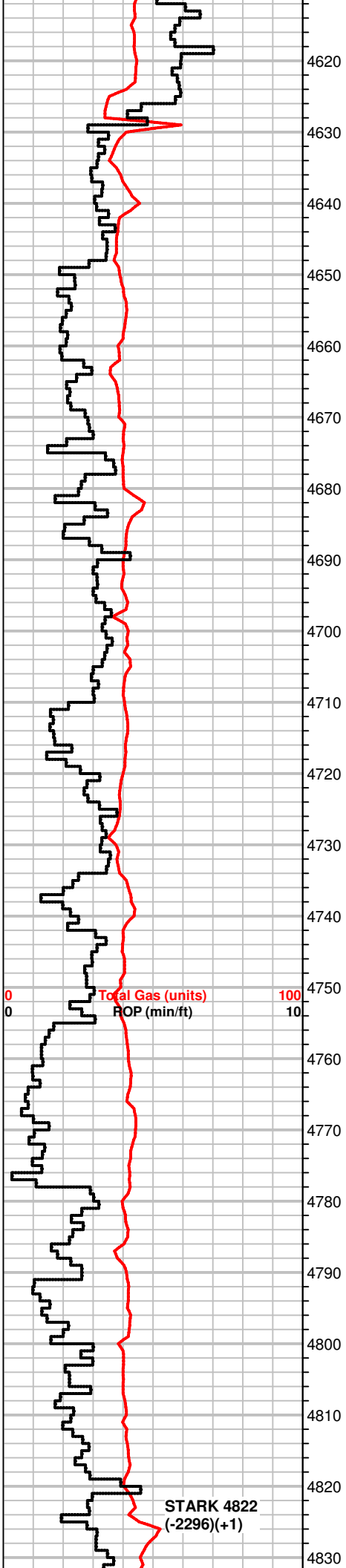
MS-WS, crm, some lt. gray, f-xln to chalky, A.A., SH, fresh, platy, gray to green pcs

MS, tan to lt. gray, f-xln, gritty in pt., hard/dense, brittle, some Chert, tan/white, SH, blk, green, grays

WS-MS, brn to tan, mic-xln to f-xln, most dense, m-gr oolitic/fossilif., Chert, gray, brn, dull fluor, NS

MS-WS, A.A. dec amt of fossilif. pcs, hard, some shaly in pt., Chert





MS-W.S., A.A., dec amt. of fossilif. pcs, hard, some shaly in pt., Chert  
 frgmts, wht  
 SH, grays

MS-W.S, crm to brn, f-xln to earthy txt, gritty pcs, some dense, calcite  
 rhombs, scatt fossils, SH, grays

MS, crm to tan, f-xln, dense, scatt fossils, Chert, brn  
 SH, grays

MS-W.S, brn to crm, mic-xln to chalky pcs, most firm, rare sub oolitic  
 pcs, Chert, gray

MS, crm to lt. gray, f- to m-xln, earthy in pt., fragments of Chert in  
 chalky mtrx, NS, SH, dk. gray to gray

MS, crm to off wht, f-xln to chalky, scatt fossils, Chert, wht, gray, brn,  
 fossils, SH, gray, green

MS-W.S, crm to tan, chalky to f-xln, A.A., NS

MS, crm to lt. tan, f-xln, some chalky, firm, some mic-xln brn pcs,  
 dense, NS, rare SH, gray, green

MS, crm to gray, chalky to earthy, firm, fossil frgmts, stylolites, Chert,  
 wht to gray, NS, rare SH, grays to green pcs

MS-W.S, crm, gray, brn, vf-xln, dense, some A.A., inc in fossils, rare  
 m-gr oolitic pcs, NS, Chert, gray  
 SH, dk. gray to gray

MS, crm to tan, m-xln, some chalky to shaly in pt., firm to hard, scatt  
 gritty pcs, NS Chert, gray, brn

MS, tan to crm, f-xln to chalky, fossil scatt, pyrite, NS  
 Chert, wht, fossils

SH, dk. gray to gray, MS, A.A., becoming brn, inc. in fossils

WS-MS, gray to crm, m-xln, some chalky pcs, mottled in pt., most  
 dense, scatt fossils, Chert, brn/wht, fossils

MS, crm to lt. gray, tan, f-xln, earthy to massive pcs, most chalky, firm,  
 gritty in pt., scatt fossils, Chert, gray  
 SH, gray

MS-W.S, crm to tan, f-xln to massive, scatt chalky pcs, fossilif., some  
 shaly, f-gr oolitic pcs, Chert, brn  
 SH blk to gray pcs scatt

MS-W.S, crm, chalky, soft, some dense, mic-xln, fossils scatt, NS  
 Chert, brn, wht  
 SH, grays to dk. gray, striated to silty pcs

WS-MS, crm to tan, m-xln, fossil frgmts, oomoldic, soft friable to  
 dense, Chert, brn, fossils, NS

WS-MS, crm to tan, m-xln to chalky, fossilif./moldic pcs, glauc, some  
 dense, friable, NS, Chert, brn, wht

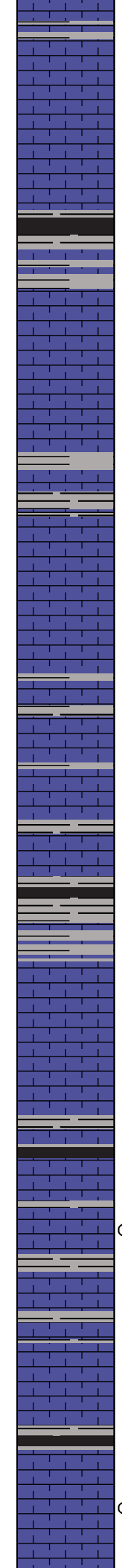
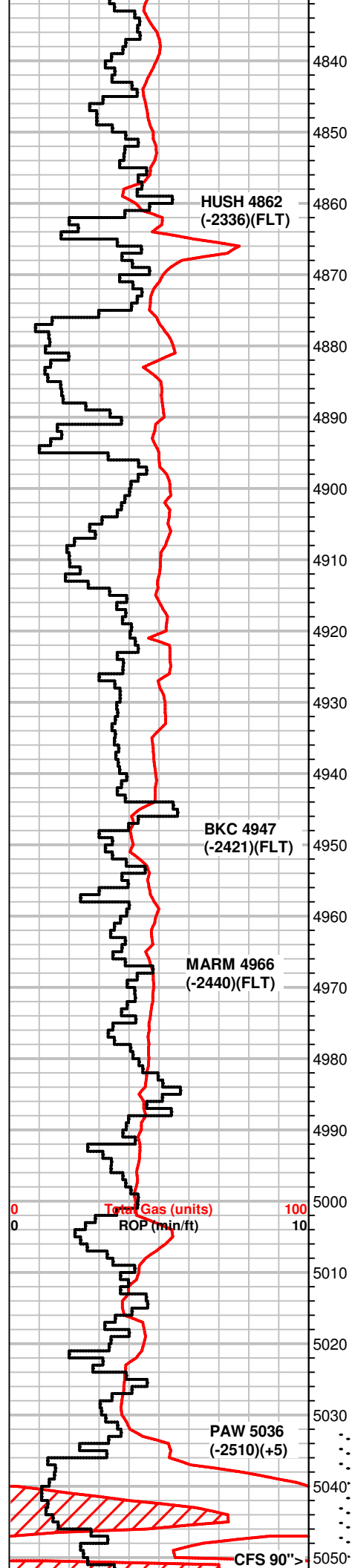
WS-MS, crm to tan, f to m-xln, chalky in pt., f-gr oolitic/fossils, moldic  
 pcs, some dense, some Chert frgmts, gray to wht.

MS, brn to crm, f-xln, some massive pcs, dense, A.A., NS  
 SH, blk to grays, silty in pt.

SH, blk, grays, carbonaceous

Bit Trip @ 4629'

STARK 4822  
 (-2296)(+1)



SH, gray to blk, silty  
MS, crm to brn, f-xln, massive/dense to chalky, soft to firm, silty/shaly, fossils scatt., NS

MS, brn to crm, mic-xln to chalky pcs, dense, firm/brittle, fossils, m-gr oolitic pcs rare, Chert, tan, SH, blk to gray, green scatt

MS, brn to crm, f- to m-xln, fossilif/gritty, A.A.

SH, blk, carb., grays  
MS, brn to tan, mic-xln to massive, dense, rare fossils, Chert, brn

MS, tan, brn, crm, f to mic-xln, dense to firm, some chalky, fossils catt., Chert, brn

MS, brn to tan, mic-xln to massive, dense looking, firm/friable, some chalky pcs, scatt fossils, NS some SH, grays, brn

SH, blk, grays, MS-WS, crm to tan, f-xln to m-xln, hard, chalky pcs scatt, fossils, mineral specs, NS

MS-WS, crm brn, gray, mic-xln to f-xln, dense/friable, massive pcs, shaly, f-gr oolitic, fossils, mottled pcs, Chert, wht, brn SH, gray

MS, crm to tan, f-xln to chalky, friable, fossilif. in pt., SH, brn, gray, green

SH, blk, gray, green, silty, limey in pt., MS crm, f-xln to chalky/shaly, hard, scatt fossils, suboolitic pcs, NS

MS, gray to crm, mic-xln to f-xln, dense, scatt fossils, Chert, wht fossils, some SH, grays

SH, dk. gray to blk, brn  
MS, gray to brn, f-xln, hard, dense

Influx SH, blk to gray, brn, MS, crm to gray, f-xln, hard pcs, chalky/soft, dull fluor, NS

MS, crm, dk. specs, f-xln, gritty to earthy, chalky mtrx, friable, SH, blk to gray, dec. amt

MS-WS, lt. gray to crm, f-xln shaly in pt., glauc, fossilif., SH, gray, green

MS, crm, tna, brn, f-xln, firm to hard, gritty, mineral specs, fossilif., SH, gray to blk, green

SH, grays, fissile  
MS, crm to tan, gray, f-xln to chalky, scatt fossils, firm to dense, dull fluor, NS

WS-PS, crm to off wht, f to m-gr oolitic pcs, friable, <1% of try w/ bri sptyfluor, cut when broken, no odor, sli stn.

MS, tan, crm, lt. gray, f-xln, chalky, dense, fossils, Chert, wht  
SH, grays,

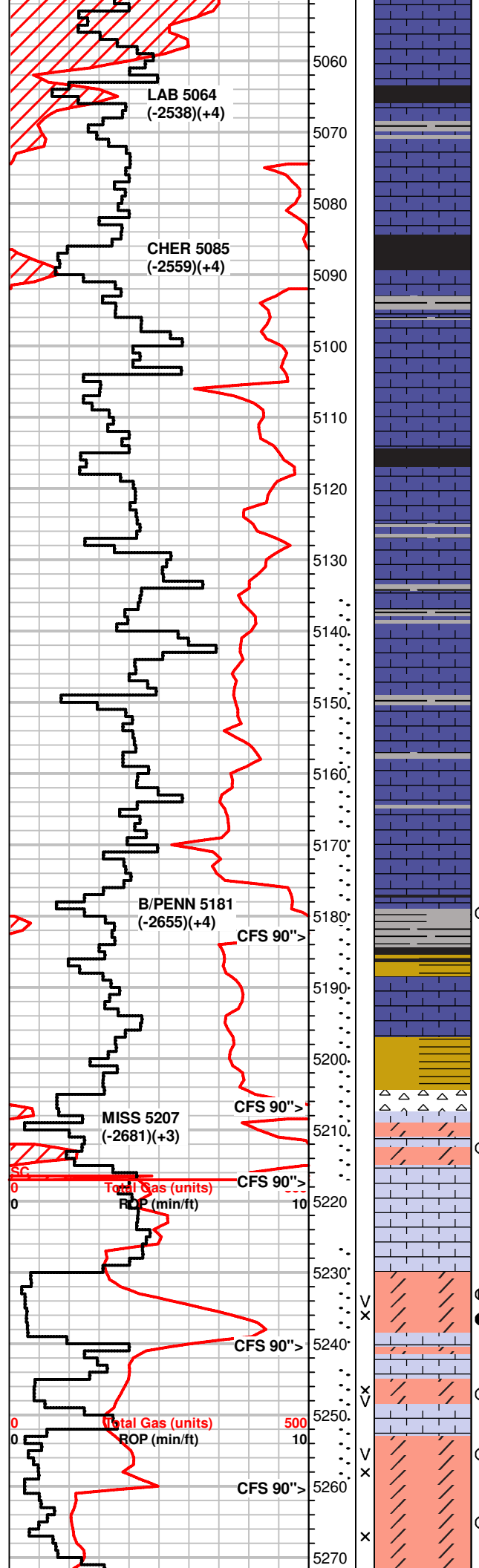
MS, tan to crm, f-xln to sli. chalky, firm to dense, barren, SH, gray to blk, Chert, gray, wht

SH, blk to green, MS, crm to tan, f-xln to earthy, gritty pcs, most dense, some brittle, Chert, gray to brn, fossils

MS-WS, crm to tan, f-xln to gritty/earthypcs, some chalky, hard/dense, scatt fossils, Chert, wht, brn, fossils, good odor in bag, spty bri fluor, no cut, barren dry

**DST #1 5032-5050**  
**Pawnee**  
 30-60-60-120  
 SB BOB 1", blt to 197 inches  
 BB 7 inches  
 SB BOB 4", blt to 240 inches  
 BB 33 inches  
 4330' GIP  
 Rec: 50' Gsy Oil (10g,90o)  
 252' OMCW (5o,5m,90w)  
 315' Water  
 IH 2526#  
 IF 65-137#  
 ISIP 1199#  
 FF 145-292#  
 FSIP 1202#  
 FH 2445#  
 Temp 116°F  
 Gravity 36  
 API Rw .08 @ 90°F  
 CI 74,000ppm  
 Pipe Strap .3' Long to Board

**+133 UGK, w/ +76 UGK recycle**



MS, crm, f-xln, massive to chakly, fossil scatt, NS

MS, crm to tan, f-xln to massive, some dense, scatt fossils, Chert, tan, wht, fossils, NS

influx SH, blk to dk. gray  
MS, dk. gray to brn, mottled/shaly in pt., firm, some mic-xln/massive, dense, Chert, lt. gray

MS, crm to tan, f-xln, firm to brittle, gritty, mineral specs, fossils, SH, some blk, gray, green

SH, blk to brn, grays  
MS, crm to lt. gray, f-xln, some chalky, fossils, mineral specs, dull fluor, NS

Inc SH, brn, blk  
MS, A.A., shaly in pt., sub oolitic pcs scatt, NS

SH, blk to gray

MS, crm to gray, brn, f-xln to m-xln, chalky in pt., fossils, firm, pyrite, NS, Chert, wht

MS-WS, crm to brn, f-xln to m-xln, fossilif., some dense/massive pcs, Chert, wht, brn, oolitic, scatt SH, blk to green

SH, dk. gray to blk, silty  
MS-WS, A.A., NS

MS-WS, brm to brn, f-xln to m-xln, firm to soft, rare dense pcs, scatt fossils, some pcs mottled, NS, SH, A.A.

MS, brn to crm, waxy, f-xln chalky in pt., soft/dense pcs, fossils, shaly, NS, SH, blk, gray

SH, blk, gray, sea green, sandy pcs, MS, crm to brn, f-xln, rare sub oolitic pcs, fossilif., chalky pcs, dull fluor, NS

MS, brm to lt. brn, tan, f-xln to chalky, sub oolitic to fossilif., some dense, most soft/firm, some bright fluor, few pcs w/ lt. stn (<2% of tray), faint odor in bag, inst streaming cut from some pcs, some pcs only when broken

SH, blk, dk. green, brn, silty  
MS-WS, crm to brn, f-xln, sub-oolitic/fossilif, dense to hard, dull fluor, NS

SH, vari-colored, sandy to silty, SS clusters, green/gray, f-gr well sorted, hard, NS, MS-WS, brn to crm, f-xln to chalky, dense, dull fluor, NS

Chert, white, tan, yellow, fossils, NS, no odor

Dolo, tan to gray, vf-xln, fine sucrosic txt, hard, brittle, bright fluor spotty, good odor, very faint stn wet, some bleeding gas, rainbow oil, strmg cut when broken, WS-PS, crm to off wht, f-xln to chalky, oolitic, some pcs dense

WS-MS, off wht to tan, f-xln to chalky, m-gr oolitic in chalky mtrx to hard dense sub oolitic pcs in calc. mtrx, dull fluor, NS

Dolo, tan to brn, v-f sucrosic txt to m-gr oolitic/fossilif. pcs, vuggy por, soft, 50% of tray w/ bright fluor, strong odor in bag, scatt to even oil stn, live gas bubbles, live oil droplets, inst strmg cut, even stn dry, vuggy por., int-xln por

Dolo, crm to tan, lesser, carrying shows A.A., MS-WS, off wht to crm, chalky to f-xln, oolitic to dense, NS

Dolo, brn to crm, f-xln to m-gr oolitic/fossilif., scatt Chert frgmts, wht, bright fluor >75% of tray, fair to good odor, brn oil stn rare, strmg cut when broken, some slow milky cut, partial to even stn dry, vuggy to int-xln por.

Dolo, brn, m-gr oolitic, f-xln txt, soft, some Chert with dolo edges, bright mineral fluor, good odor, Chert, wht, tan, fossils

**DST #2 5196-5217**  
**Mis-Run, Packer Failure**

**DST#3 5135-5217**  
**Mississippian**  
**30-60-60-120**  
**SB BOB 4" blt to inches**  
**NBB**  
**SB BOB Immed blt to 420 inches**  
**Wk surf BB**  
**4854' GIP**  
**Rec: 30' GCM (10g,90m)**  
**IH 2685#**  
**IF 49-58#**  
**ISIP 1342#**  
**FF 69-65#**  
**FSIP 1489#**  
**FH 2542#**  
**Temp 111°F**

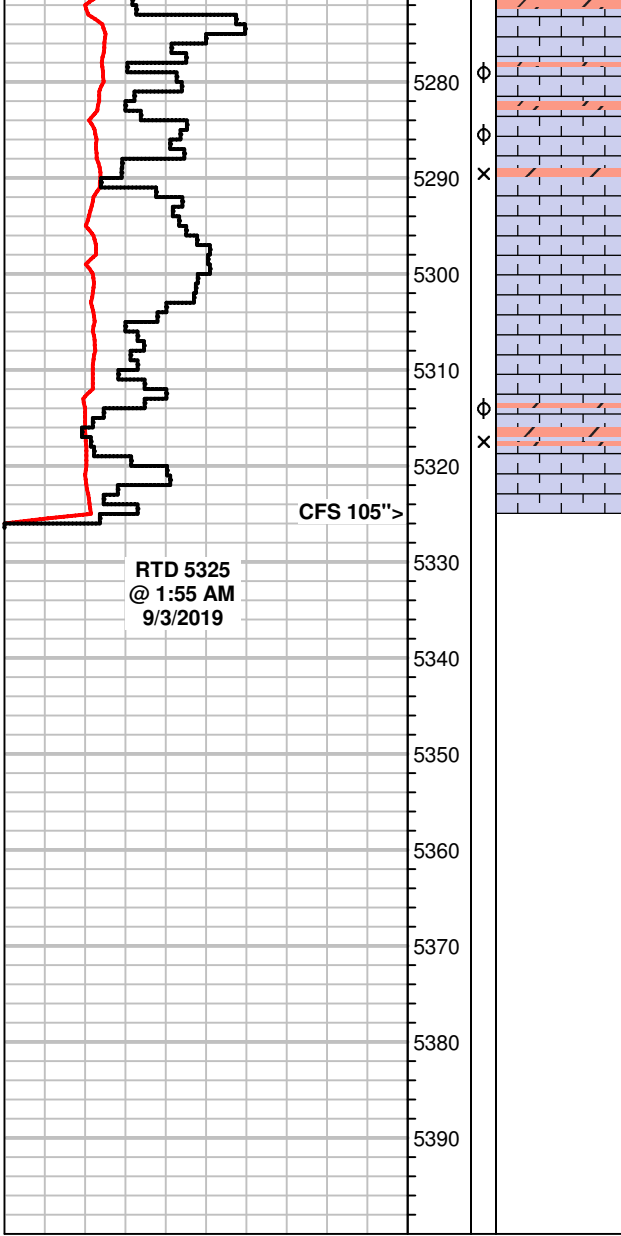
**+38 UGK, 9 unit recycle**

**+33 UGK, +15 unit recycle**

**+44 UGK, +20 unit recycle**

**+268 UGK, 95 unit recycle**

**DST #4 5226-5240**  
**Mississippian**  
**30-60-60-120**  
**SB BOB 30 sec. blt to 266 inches**  
**1 inch BB**  
**SB BOB Immed, GTS 32 min, gauged**  
**8.758 MCF @ 40"**  
**9.133 MCF @ 50"**  
**9.881 MCF @ 60"**  
**1/2 inch BB**  
**5037' GIP**



WS-PS, crm to off wht, chalky, m-gr oolitic in chalkly mtrx, some pcs dense, hard/frim, min. fluor, SH, gray to green, blk rare, scatt Dolo, tan to brn, vf-xln sucrosic to sugary txt., dull fluor

WS-PS, tan to off wht, f-xln to chalky, hard to firm, m-gr oolitic Chert, wht, rare SH, blk, gray

PS-WS, crm to off wht, massive to f-xln, chalky pcs scatt, soft to dense, m-gr oolitic, NS  
 Dolo, brn to tan, f-xln, f-gr oolitic pcs scatt, most pcs w/ sugary txt., hard, mineral fluor, int-xln por.

PS-WS, off wht to crm, chalky, m-gr oolitic in soft chalky mtrx, friabel, some Chert, wht, rare massive pcs, dense, NS  
 Scatt Dolo, brn, f-xln to vf-sucrosic txt., dull fluor, NS

Rec:194' Total  
 68' Gsy Oil (10g,90o)  
 63' GOCM (10g, 30o,60m)  
 63' GOMCW (10g, 10o,20m,60w)  
 IH 2569#  
 IF 30-51#  
 ISIP 1371#  
 FF 43-93#  
 FSIP 1372#  
 FH 2486#  
 Temp 115°F  
 Gravity 40.7  
 API Rw .13 @ 78°F  
 CI 53,000ppm

DST #5 5243-5260  
 Mississippian  
 30-60-90-120  
 WB Blt to 3 3/4 inches  
 NBB  
 WB Blt to 8 inches  
 NBB  
 411' GIP  
 Rec: 93' MCW (12m,88w)  
 IH 2608#  
 IF 21-30#  
 ISIP 1344#  
 FF 29-69#  
 FSIP 1330#  
 FH 2509#  
 Temp 115°F  
 API Rw .1 @ 90°F  
 CI 58,000 ppm

RTD 5325  
 @ 1:55 AM  
 9/3/2019

CFS 105">