





Liberal Yard #1717 - Phone 620-624-2277 - 1700 S. Country Estates Road, Liberal KS 67901

**PRESSURE PUMPING**

**Job Log**

<b>Customer:</b>	Merit Energy	<b>Cement Pump No.:</b>	37223 19572 15HRS	<b>Operator TRK No.:</b>	78868
<b>Address:</b>	gardencity.invoices@meritenergy.com	<b>Ticket #:</b>	1718 19690 L	<b>Bulk TRK No.:</b>	30463 14284 19827 37725 Samuel
<b>City, State, Zip:</b>	AFE- 64380	<b>Job Type:</b>	Z-42 Cement Surface Casing		
<b>Service District:</b>	1718-Liberal Ks	<b>Well Type:</b>	OIL		
<b>Well Name and No.:</b>	Staley # 3-21	<b>Well Location:</b>	21-25S-32W	<b>County:</b>	Finney <b>State:</b> Kansas

Type of Cmt	Sacks	Additives	Truck Loaded On	
A-Con Cement	475	3% Calcium Chloride, 1/2# Celloflake, 1# Gilsonite	30463 14284	Front Back
Class C Cement	165	2% Calcium Chloride, 1/4# Celloflake	19827 37725 Samuel	Front Back
				Front Back

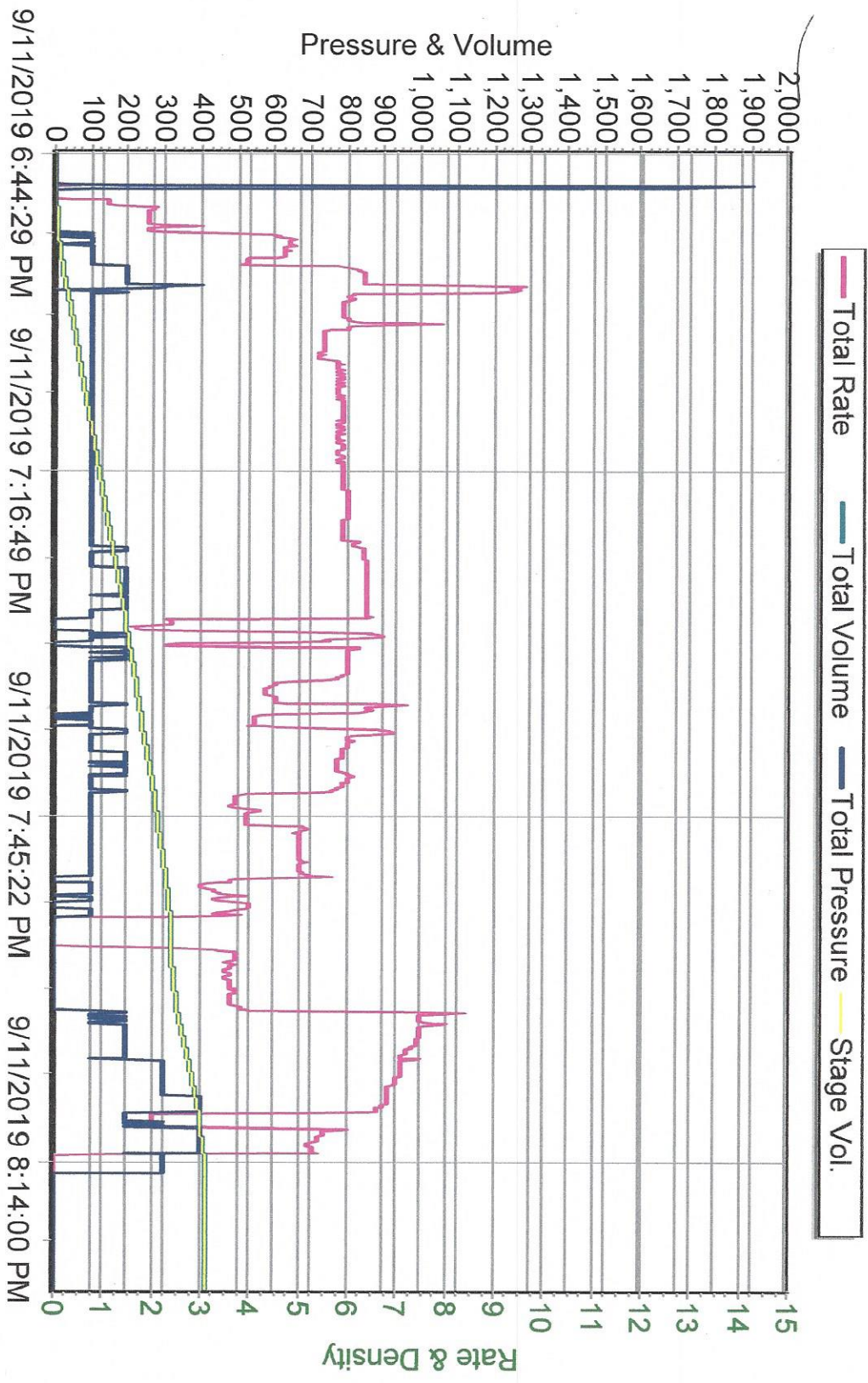
Lead/Tail:	Weight #1 Gal.	Cu/Ft/sk	Water Requirements	CU. FT.	Man Hours / Personnel
<b>Lead:</b>	12.1	2.41	13.9	1144.75	TT Man Hours: 51
<b>Tail:</b>	14.8	1.34	6.33	221.1	# of Men on Job: 3

Time (am/pm)	(BPM)	Volume (BBLs)	Pumps		Pressure(Psi)		Description of Operation and Materials
			T	C	Tubing	Casing	
14:30pm							Arrived at location
17:30pm							Spot trucks/Rig up
18:30pm							Safety meeting
18:52pm						1500	Pressure test lines to 1500psi
18:53pm	3.5	10				zero	Pump 10bbls of fresh water spacer
18:57pm	6	203				100	Pump 203bbls of lead from 475sks at 12.1lbs
19:41pm	6	39				50	Pump 39bbls of tail from 165sks at 14.8lbs
19:53pm							Shut down/Drop plug/Wash pump and lines
19:55pm							Start displacement of bbls with fresh water
20:00pm	6	20				100	20bbls gone
20:03pm	6	40				150	40bbls gone
20:06pm	6	60				280	60bbls gone
20:10pm	5	80				300	80bbls gone
20:27pm	2	90				100	90bbls gone changed to rig pump
20:30pm	4	104				1100	Bump plug
							Release pressure to check if float holds
							Got 50bbls of cement to Surface
							Rig down
							Job Completed
							Thanked company man and rig crew

Size Hole	12 1/4	Depth	1692		TYPE	Float Collar	
Size & Wt. Csg.	8 5/8 24#	Depth	1682	New / Used	Float Collar	1640.4	Depth
Landing Psi	500+	Depth			Retainer		Depth
Shoe Joint	41.6	Type			Perfs		CIBP

Customer Signature:	Basic Representative:	Victor A. Corona
	Basic Signature:	<i>Victor A. Corona</i>
	Date of Service:	9/11/2019

**Merit Energy**  
**8 5/8 Surface**  
**Staley 3-21**  
**9/11/2019**



# Pumping Order / Mixture

Client: Merit Energy  
Date: 9/11/2019  
Job: 8 5/8 Surface

Well Name & No: Staley 3-21  
Location Supervisor: Victor A. Corona  
COMPANY REP. Rodney Gonzales

Differential Pressure      1379 psi  
Lift Pressure:              500 psi

## Recipe

---

Pressure Test PSI: 1500

MAX PSI: 500

**10 BBLs OF FRESH WATER SPACER**  
**203 BBLs LEAD SLURRY YIELD 2.41    12.1LBS            475SKS 13.9G/SK**  
**39 BBLs TAIL SLURRY YIELD 1.34    14.8LBS            165SKS 6.33G/SK**

**DROP PLUG/WASH PUMP ON TOP OF PLUG**

**104.0 BBLs OF DISPLACEMENT**  
**94.0 BBLs @ 5 BPM**  
**10.0 BBLs AT 2-3 BPM TO BUMP PLUG**

**DISP PLUG WITH 104BBLs OF H2O**

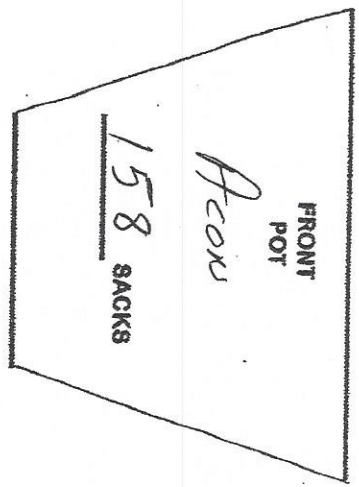


DATE 9-11-2019

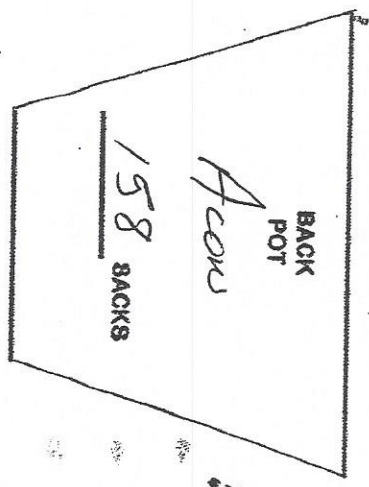
COMPANY  
LEASE

Merit  
Staley Well #3-2A

### DIRECTIONS



30463



14284

Hours to Load Truck 800 AM 1200 PM

19827-37725

F-B

165 159

tail Acorn

