



DRILLING				OIL				OIL						
VAN LOENEN #9				NCRA				NCRA						
VAN LOENE #9				Van Loenen #5				VAN LOENEN #2						
14-9-22				SW-NE-NE 14-9S-22W				NE-NE-NE 14-9S-22W						
COL	ZBVS	RH	ZBVS	RH	2292				RH	2319				
LOG		SAMPLE		LOG		LOG		SAMPLE		LOG		SAMPLE		
FORMATION	DEPTH	DATUM	DEPTH	DATUM	DEPTH	DATUM	COBB.	COBB.	DEPTH	DATUM	COBB.	COBB.		
ANHYDRITE TOP			822	503	790	502			+	1			+	4
ANHYDRITE BASE			1857	458										
HEAVY SHALE	3504	-179	3905	-180	3470	-178	-	1	-	2	3505	-186	+	7
TORONTO	3528	-1203	3625	-1200	3496	-1204	+	1	+	4				
LANSING	3545	-1220	3536	-1213	3503	-1221	+	1	+	8	3544	-1225	+	5
BEC	3736	-1431	3737	-1432	3724	-1432	+	1	+	0	3738	-1439	+	8
ARBICOLA	3870	-1545	3878	-1583	3843	-1581	+	6	-	2	3871	-1582	+	7
ETD	3935	-1680	3934	-1609	3846	-1554	-	56	-	55	3875	-1556	-	54

ROCK TYPES

- Dolprim
- Lmst fw<7
- shale, gry
- shale, red
- sdy lmst
- shale, grn
- Carbon Sh
- Ss

ACCESSORIES

- #### STRINGER
- Chert
 - green shale

OTHER SYMBOLS

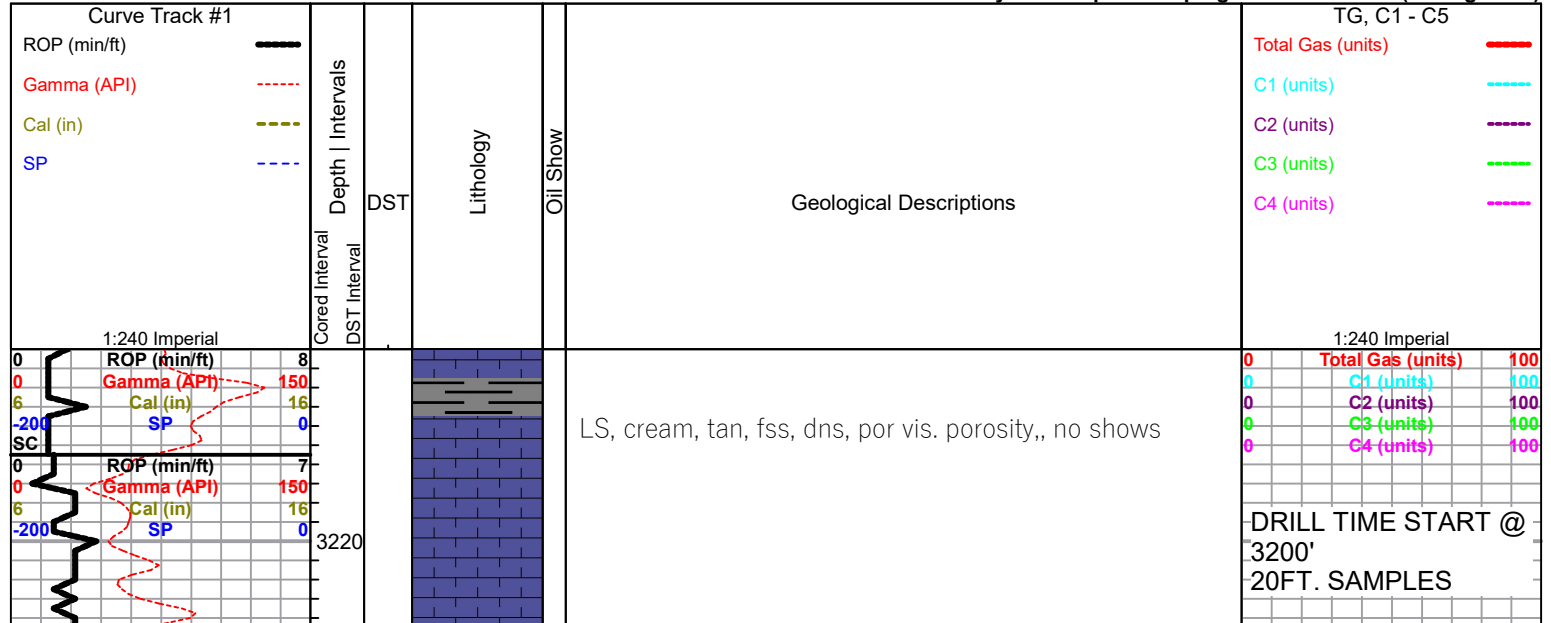
- #### Oil Show

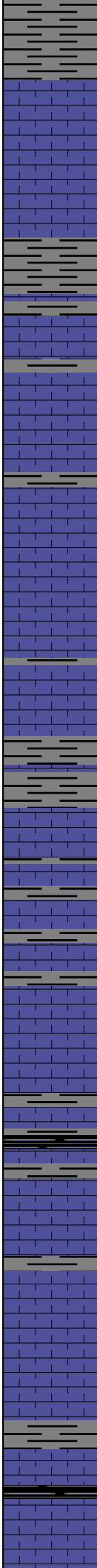
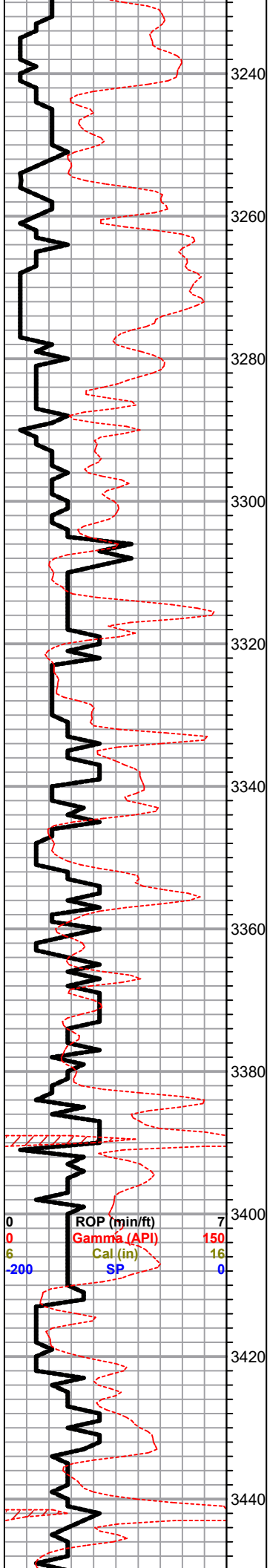
 - Good Show
 - Fair Show
 - Poor Show
 - Spotted or Trace
 - Questionable Stn
 - Dead Oil Stn
 - Fluorescence
 - Gas

DST

 - DST Int
 - DST alt
 - Core
 - tail pipe

Printed by GEOstrip VC Striplog version 4.0.8.15 (www.grsi.ca)





Sh, gry, greenish, soft silty

LS, tan, brn, foss, cherty, no shows, no odor

Sh, a/a, tr. sd. gry, f- med grain, sub rounded, good inner gran. porosity no shows

LS wht, crm, foss, poor visible porosity, chalky in pts, no shows

LS, a/a, tr. dens poor vis porosity, sl. chalky, no shows,

Slug dk, gry - blk sh.

LS, tan buff, foss, por vis. porosity, sl. chalky, no shows,
Tr. gry silty brn / gry sh.
slug of black carb sh

LS, foss, fair p.p. porosity in pts, tr. blk flakey discoloration , nsfo,

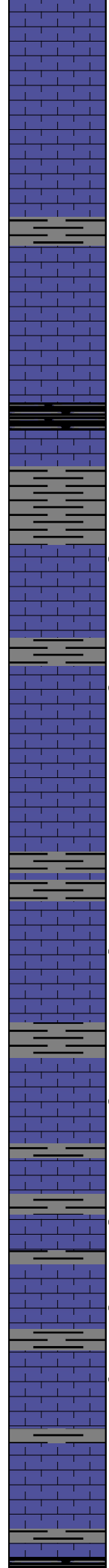
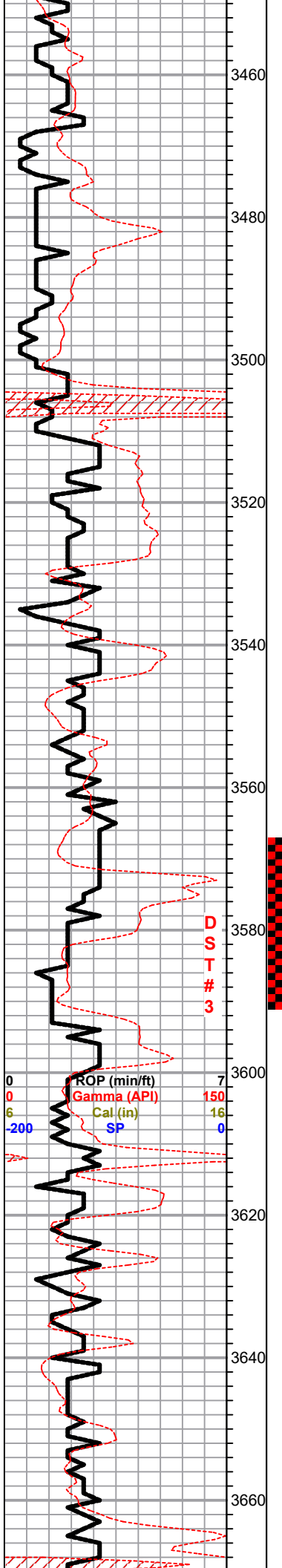
LS , tan , foss, chalky, no shows, . white, opaque cherts,
abd. blk shale.

LS, tan, gran, poorly developed, no shows, v. chalky, tr. cherts, a/a

START OF 10' SAMPLES @ 3400'

0	Total Gas (units)	100
0	C1 (units)	100
0	C2 (units)	100
0	C3 (units)	100
0	C4 (units)	100

ROP (min/ft) 7
Gamma (API) 150
Cal (in) 16
SP 0



LS, tan, dol., p.p. porosity, chalky, no shows, tr. white chalk

LS, tan, foss, chalky, poor vis. porosity, sl. chalky, no shows, tr. white chalk

LS, tan, white, fxl, dense, poor vis. porosity, dense, no shows, no odor

LS, tan, white, fxl, dense, cherty in pts, fos,

HEEBNER 3505.0 (-1180.0) 3504.0 (-1179.0)

Slug black carb sh.

LS tan, brn, gry, fxl, dense, LS,

TORONTO 3525.0 (-1205.0) 3528.0 (-1203.0)

LS, tan, crm white, foss, / dolomitic, fair inxln porosity, tr. br spty stain, tr. wk spty sfo, no odor

slug gry greenish sh. silty soft

LANSING 3538.0 (-1213.0) 3545.0 (-1220.0)

LS, white, cream, dol., fair inxln por. tr. blk spty stain, tr. viscous / tarry, spty sfo, no odor

LS white, cream, foss, chalky, poor vis. poor. no shows

LS, cream, white, dense, poor vis. porosity, no shows

Slug gry silty soft shale

LS, white crm, foss/ ool, fair p.p. porosity, tr. brn, stain, v. weak. spty sfo, no odor

Tr. gry silty sh.

LS, white cream, foss, scattered porosity, sl. chalky, brn stain, sfo, faint odor

LS, white, cream, f-xln, fair scattered p.p. porosity, sl. chalky, tr. blk heavy stain, nsfo, ?? odor

LS, white scattered vuggy porosity, sl. chalky, dk blk stain, spty sfo, odor

LS. cream/ white, f-xln, few poorly developed ool, poor scattered oom vuggy type porosity, blk stain, dk brn-blk sfo, faint odor, vis. gas bub. in brkn sampes.

LS, white, cream, tan, fxl, dense, cherty nsfo, no odor

MUNCIE CR. 3670.0 (-1345.0) 0.0 (0.0)

DST#3 3568-3590 30-30-30-30

1st Open :
15 mins build to 4"

2nd Open:
BOB 22 mins.

Recovery
120' Muddy Water
W/ oil spots

260' MCW
(10%M, 90%W)

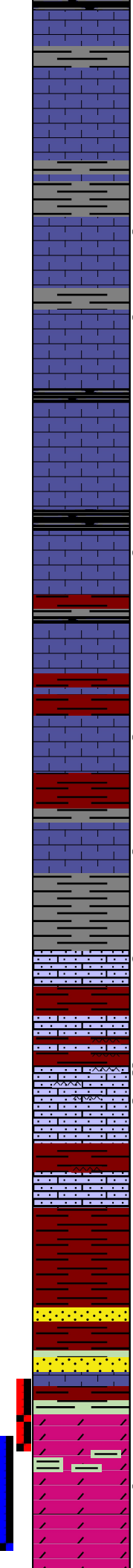
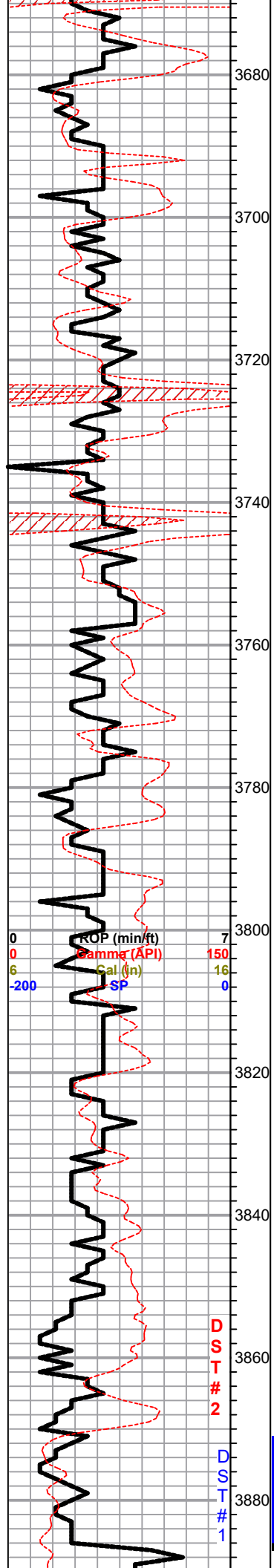
Pressures:
ISIP 635 psi
FSIP 632 psi
IFP 24-103 psi
FFP 106-168 psi
HSH 1784-1760 psi

CFS 20-40-60 (units) 100

@ 3600' (ts) 100

0	C2 (units)	100
0	C3 (units)	100
0	C4 (units)	100

BIT TRIP



Black carb Sh.

LS, white, few foss, poor vis. porosity, no shows no odor

LS, white, oom, foss, scattered vuggy porosity lt. brn - golden brn stain, spty sfo, ??? odor

LS, tan, white, scattered p.p. porosity tr. brn/ blk stain, sfo, ??? odor , tr. blk flakey (dead) stains on few

STARK SH. 3724.0 (-1395.0) 0.0 (0.0)

Black carb Sh.

LS, white, dense, poor porosity, nsfo,

Sh, black carb
LS, cream, foss, scattered p.p. porosity, sl. chalky, ft. blk stain, spty dk brn sfo (viscous/ tarry) fair odor in brkn samples

BKC 3756.0 (-1431.0) 3756.0 (-1431.0)

LS, white, cream, scattered vuggy por. tr. blk stain , sfo, ??? odor? tr. pyrite

abund. red / maroon sh

Tr. LS, white, fxl, dense, poor scattered p.p. porosity, tr. spty sfo,

LS, white, gran, micro ool/-sandy, fair inxln porosity, lt. black stain, v. weak, tarry/ heavy spty sfo, Slug sh. dk maroon, red silty

LS, a/a , tr. blk stain, no live sfo,

Soft red maroon, sh. v.c. cherts

LS, white, tan foss/ micro ool, sdy/ gran, nsfo, no odor

Sh, maroon, rust -red, dolomitic, blk,

tr. sd. clear, med grain, sub rounded, poorly sorted, good inner gran. porosity, tr. gluac. no sfo, no odor

Sh, maroon, red , dolomitic, tr. sd. a/a,

ARBUCKLE 3878.0 (-1553.0) 3870.0 (-

Sh, a/a, tr. LS, cream, tan, dol., , fxl, few ool, dense, nsfo, slug abundant aqua green sh,

Dol, tan, suc. good inxln porosity, dk blk stain , sfo, strong odor,

Dol white, tan, suc. fxl, dense, no shows, no odor

**DST#1 3866-3885
15-30-15-30**

1st Open:
BOB 45 sec.

2nd Open:
BOB 30 Sec.

Recovery:
1950' MCSW

450' MW w/ skim of oil

Pressures:
ISIP 1168 psi
FSIP 1155 psi
IFP 285-701 psi
FFP 773-1044 psi
HSH 1922-1869 psi

MARM???

?	s (units)	100
0	C1 (units)	100
0	C2 (units)	100
0	C3 (units)	100
0	C4 (units)	100

**DST # 2 3866-3875
30-30-5-X**

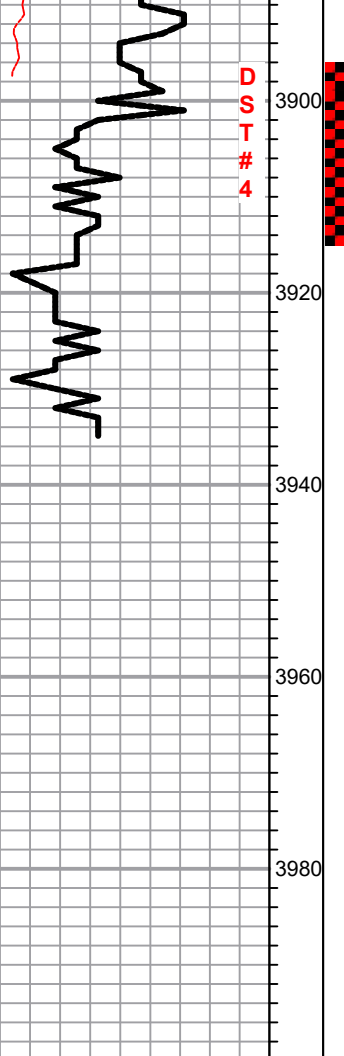
1st Open:
Weak 2" blow

2nd Open:
Died after 5 mins.

Recovery:
25' mud with oil spots

Pressures :
ISIP 36 psi
FSIP 35 psi
IFP 36-35 psi
FFP 32-34 psi
HSH 1931-1889 psi

Dol. white, tan, suc. fxl, dense no shows, no odor



○ Dol. tan, suc. poor inxln porosity, dense, dk blk stain, dk brn sfo, fair odor in broken samples (free oil in tray)

Dol. tan, brn, fxl, dense, poor vis. porosity, blk flakey stain, nsfo, no odor

○ Dol. tan, fxl, lg coarse xln in pts, blk stain, tr. sfo, no odor, tr. opaque cherts

LTD 3934.0 (-1609.0) 3934.0 (-1609.0)

RTD 3935.0 (-1610.0) 3935.0 (-1610.0)

DST#4 3896-3916
5-30

1st Open:
BOB 10 sec.

No return

Recovery:
180' SWCM
(5%W, 95%W)
640' MCW
(10%M, 90%W)

Pressures:
BHP 753-1180 PSI

All DST Test after # 1 were straddle tested after Logs