



# AUSTIN B. KLAUS



**Cell 785.650.3629**  
**Work 785.483.3145**  
**Ext 225**

**PO BOX 352**  
**Russell, KS 67665**  
**austin.klaus@johnofarmer.com**

**Scale 1:240 (5"=100') Imperial**  
**Measured Depth Log**

**Well Name: Maupin #2**  
**Location: Russell County**  
**License Number: API #15-167-24,077-0000** **Region: Kansas**  
**Spud Date: 9/3/2019** **Drilling Completed: 9/11/2019**  
**Surface Coordinates: Section 10, Township 11 South, Range 15 West**  
**755' FNL & 1,450' FWL**  
**Bottom Hole Vertical well w/ minimal deviation, same as above**  
**Coordinates:**  
**Ground Elevation (ft): 1,901** **K.B. Elevation (ft): 1,909**  
**Logged Interval (ft): 2,700 To: RTD** **Total Depth (ft): 3,470**  
**Formation: LKC-Arbuckle**  
**Type of Drilling Fluid: Chemical (Andy's Mud)**

Printed by STRIP.LOG from WellSight Systems 1-800-447-1534 www.WellSight.com

## OPERATOR

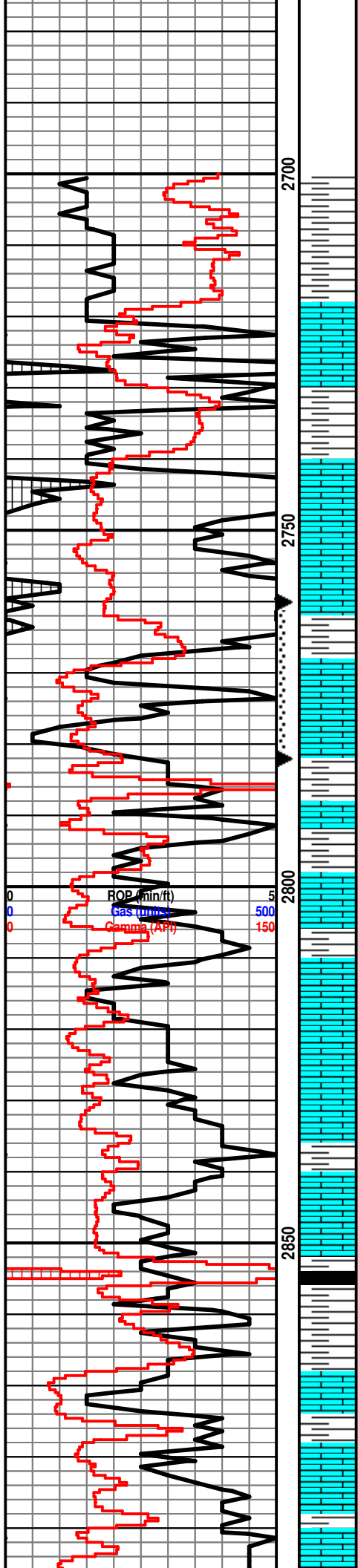
**Company: John O. Farmer, Inc.**  
**Address: 370 W. Wichita Ave.**  
**Russell, KS 67665**

## Comments

The Maupin #2 well was drilled by Discovery Drilling Rig #2 (Tool Pusher: Terry Wickham).

The location for the Maupin #2 was discovered via 3D seismic survey. Rock samples were gathered and evaluated from 2,700' - 3,470'. Oil shows were encountered in the LKC A,B,C,E,F,G,I,J, Simpson Sand, & Arbuckle. Structurally, the Lansing top was picked 3' low to the comparison well, Maupin #1 (John O. Farmer, Inc). Structure thickened slightly throughout the LKC and the B/KC was picked 5' low. As seismic indicated, the Arbuckle dropped off and was picked 10' low to the comparison well, which allowed for the development of sand just above the Arbuckle. Two straddle tests were conducted over the Simpson Sand and Arbuckle, yielding oil,water, and mud. After evaluation of all oil shows, drill stem test results, & electric logs, the decision was made to set 5 1/2" production casing on the Maupin #2 on 9/11/2019.





Ls: tan-lt gry, fn-sub xln, mostly DNS

**Topeka 2741' (-832)**

Ls: off wh-tan, fn-sub xln, sl chalky, scat foss, NSFO

Ls: ala

Sh: lt-drk gry

Ls: off wh, fn xln, fair pp porosity, fair oil stn, VSSFO, sl odor, sl chalky

Sh: drk gry-blk, carb

Sh: gry-brn

Ls: off wh-tan, fn xln, scat int xln porosity, scat stn in porosity, NSFO

Ls: tan-gry, fn-sub xln, mostly DNS

Ls: ala

Sh: drk gry-blk

Sh: lt-drk gry

Ls: tan-lt gry, fn-sub xln, mostly DNS

Sh: lt gry-brn

**DST #1 2,760-2,782' Topeka 30' zone**

30"-30"-60"-60"

IF: weak blow built to 1.6", no blow back on shut in

FF: weak blow built to 6.1", no blow back on shut in

Rec: 10' Heavy Mud Cut Water (50% M, 50% W)

126' Mud Cut Water (20% M, 80% W)

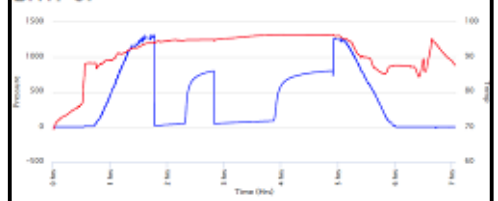
136' Total Fluid Recovery

FP: 16-43, 46-87#

SIP: 799-803#

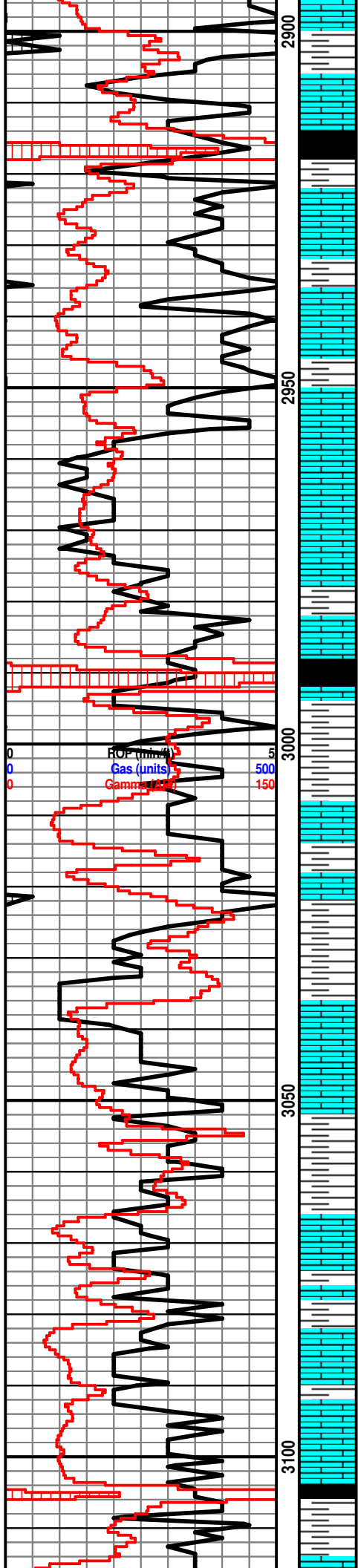
HP: 1,367-1,265#

BHT: 97°



Wt: 8.7

Vis: 54



Ls: tan-gry, fn-sub xln, mostly DNS

Sh: lt-drk gry

Sh: drk gry-blk

Ls: off wh-tan, fn xln, poor int xln porosity, NSFO

Sh: drk gry-brn

Sh: ala

Ls: off wh-tan, fn xln, poor-fair pp porosity, scat stn in porosity, NSFO, scat chert-off wh

Ls: tan-gry-crm, fn-sub xln, mostly DNS, NSFO

**Heebner 2991' (-1082)**

Sh: blk, carb, fissile

Sh: lt gry-grn, soft

**Toronto 3011' (-1102)**

Ls: off wh-tan, fn xln, scat int xln porosity, scat foss, poor scat oil stn, NSFO

Sh: lt gry-blk, scat brn

**Lansing 3039' (-1130)**

Ls: off wh-tan, fn xln, scat foss, scat fair int xln & pp porosity, scat-fair oil stn in porosity, VSSFO, sl odor

Sh: lt-drk gry

Ls: off wh-tan, fn xln, scat ool, fair int vuggy and fair-good ool porosity, fair-good oil sat, SSFO, fair odor

Sh: lt-drk gry

Ls: off wh-tan, fn xln, ool, scat foss, fair ool & scat vuggy porosity, fair-good oil stn, SSFO, sl odor

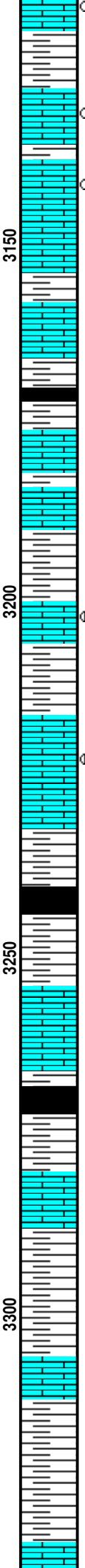
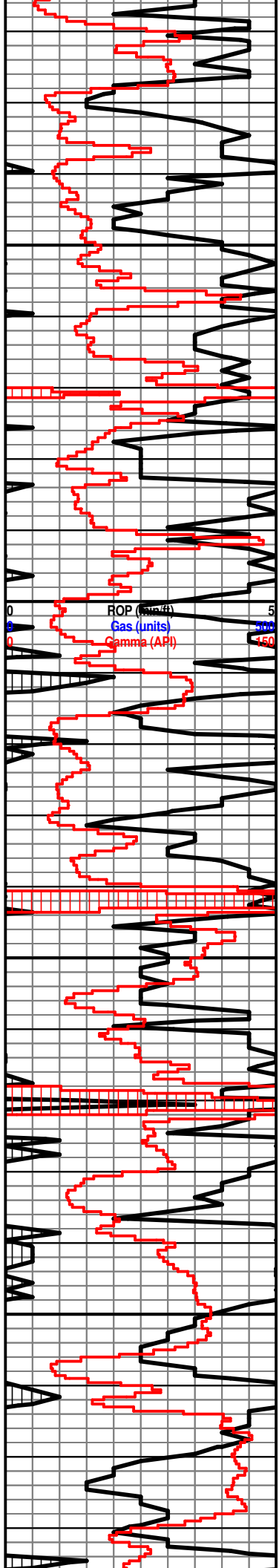
Sh: drk gry

Ls: tan-lt gry, fn xln, poor vuggy porosity, NSFO

Sh: lt-drk gry

Ls: tan-lt gry, fn xln, fair int xln porosity, scat oil

Wt: 8.9  
Vis: 48



stn, VSSFO, sl odor

Sh: drk gry

Ls: off wh-tan, fn xln, scat foss, fair vuggy porosity, scat edge stn, VSSFO, sl odor

Sh: lt-drk gry

Ls: off wh-tan, fn xln, scat ool, few rxns w/ fair ooc porosity, poor lt oil stn, scat chert-off wh, VSSFO, sl odor

Ls: tan-gry, fn-sub xln, mostly DNS

Sh: drk gry-blk

Ls: off wh-tan-lt gry, fn xln, spt edge stn, NSFO

Ls: off wh-tan, fn xln, ool, scat foss, poor ool porosity, scat int xln porosity, sl-fair stn, SSFO, fair odor

Sh: lt-drk gry

Ls: off wh-tan, fn-vry fn xln, ool, fair ool porosity, fair-good oil sat, scat SSFO, fair odor

Sh: lt-drk gry

Sh: drk gry-blk

Ls: off wh-tan, fn xln, scat foss, poor int foss porosity, poor pp vuggy porosity, scat drk edge stn, NSFO

Sh: lt-drk gry

Sh: gry-brn

Ls: off wh-tan, fn xln, scat foss, ool, poor ooc porosity, lt oil stn, NSFO, no odor

**B/KC 3297' (-1388)**

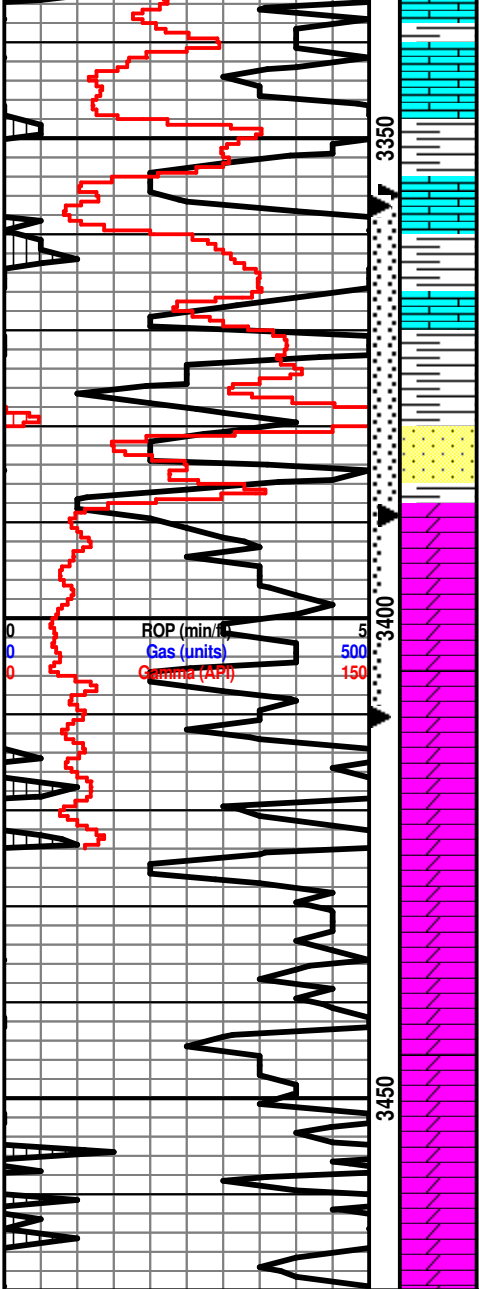
Sh: lt-drk gry

Ls: tan-brn, fn xln, mostly DNS

Sh: gry-brn-grn

Ls: tan-lt brn, fn xln, mostly DNS

Wt: 9.2  
Vis: 58



Ls: ala

Sh: lt-drk gry

Ls: off wh-tan, fn xln, scat foss, mostly DNS

Sh: lt-drk gry

**Simpson Sand 3386' (-1377)**

Ss: qtz, off wh-clr, fn-crs grn, semi ang, friable, fair-good int grn porosity, fair-good oil sat, FSFO, good odor

**Arbuckle 3394' (-1485)**

Dolo: off wh-tan-lt gry, fn xln, fair-good sucrosic xln porosity, fair-good oil sat, F-GSFO, good odor, scat chert-off wh

Dolo: off wh-tan, fn-md xln, fair sucrosic xln porosity, fair oil sat, SSFO, fair odor, scat chert

Dolo: off wh-tan, fn-md xln, poor-fair int xln porosity, fair-good oil stn w/ sl sat, SSFO, fair odor, scat chert

Dolo: off wh-tan, fn-md xln, poor int xln porosity, sl-fair oil stn, VSSFO, sl odor

Dolo: off wh-tan-lt gry, fn xln, poor int xln porosity, NSFO

Dolo: ala

**DST #3 3,356-3,389' Simpsons Sand**

15'-30"-15'-30"

IF: BOB in 3 minutes, no blow back on shut in

FF: BOB in 3 minutes, no blow back on shut in

Rec: 504' Oil & Gas Cut Muddy Water (10% O, 15% G, 20% M, 55% W)  
252' Slight Mud & Oil Cut Water (4% M, 7% O, 89% W)

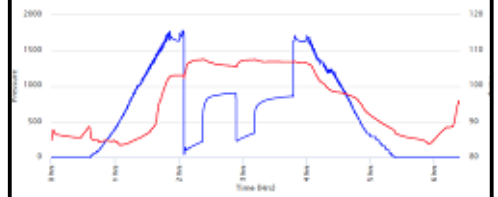
756' Total Fluid Recovery

FP: 39-223, 231-341#

SIP: 903-861#

HP: 1,634-1,634#

BHT: 108°



**DST #2 3,357-3,410' Simpsons Sand & Top 22' of Arbuckle**

10'-30"-10'-30"

IF: BOB in 1 minute, no blow back on shut in

FF: BOB in 1 minute, no blow back on shut in

Rec: 539' Slight Gas & Oil Cut Watery Mud (3% G, 5% O, 21% W, 71% M) (Chl. 20K)  
378' Oil Cut Muddy Water (5% O, 15% M, 80% W)  
315' Oil Cut Muddy Water (6% M, 8% O, 86% W)

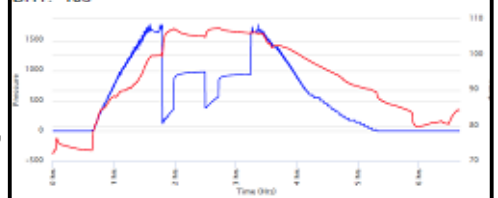
1,232' Total Fluid Recovery

FP: 119-359, 380-568#

SIP: 980-947#

HP: 1,624-1,628#

BHT: 108°



Wt: 9.1

Vis: 61