



TRILOBITE TESTING, INC.

DRILL STEM TEST REPORT

Val Energy Inc LLC
 125 N Market St Ste 1110
 Wichita, Ks. 67202
 ATTN: David Barker

29-30s-11w Barber Co. Ks.
McKay 1-29
 Job Ticket: 64948 **DST#: 1**
 Test Start: 2019.10.12 @ 04:30:15

GENERAL INFORMATION:

Formation: **Bern Limestone**
 Deviated: No Whipstock: ft (KB)
 Time Tool Opened: 07:33:45
 Time Test Ended: 12:39:15
Interval: 3063.00 ft (KB) To 3091.00 ft (KB) (TVD)
 Total Depth: 3104.00 ft (KB) (TVD)
 Hole Diameter: 7.88 inches Hole Condition: Fair
 Test Type: Conventional Straddle (Initial)
 Tester: Matt Smith
 Unit No: 68
 Reference Elevations: 1751.00 ft (KB)
 1739.00 ft (CF)
 KB to GR/CF: 12.00 ft

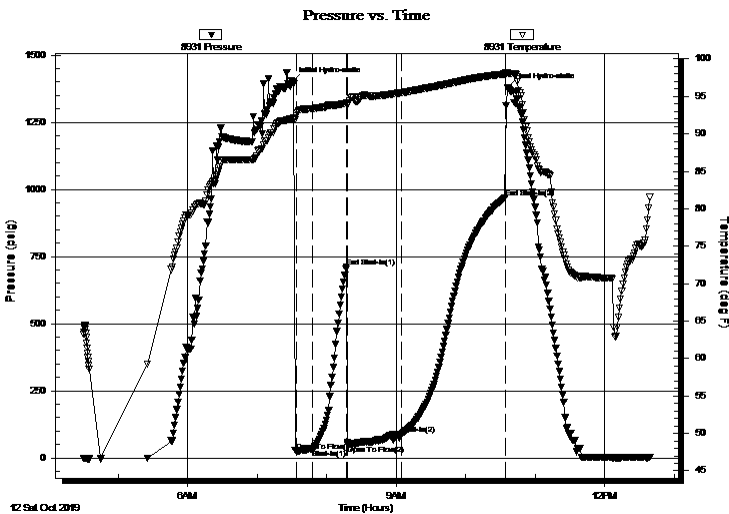
Serial #: 8931

Inside

Press@RunDepth: 89.08 psig @ 3090.00 ft (KB) Capacity: 8000.00 psig
 Start Date: 2019.10.12 End Date: 2019.10.12 Last Calib.: 2019.10.12
 Start Time: 04:30:20 End Time: 12:39:14 Time On Btm: 2019.10.12 @ 07:30:45
 Time Off Btm: 2019.10.12 @ 10:35:45

TEST COMMENT: IF: Strong Blow . Built to 11 3/4".
 IS: No Blow .
 FF: Weak Blow . Built to 4.64".
 FS: No Blow .

PRESSURE SUMMARY



Time (Min.)	Pressure (psig)	Temp (deg F)	Annotation
0	1400.70	92.05	Initial Hydro-static
3	24.53	92.42	Open To Flow (1)
17	32.95	93.34	Shut-In(1)
47	711.92	94.08	End Shut-In(1)
48	48.53	94.09	Open To Flow (2)
94	89.08	95.48	Shut-In(2)
184	968.82	97.98	End Shut-In(2)
185	1380.37	98.19	Final Hydro-static

Recovery

Length (ft)	Description	Volume (bbl)
60.00	GOCM 5%g 5%o 90%m	0.46
10.00	OSM 100%m	0.08

Gas Rates

Choke (inches)	Pressure (psig)	Gas Rate (Mcf/d)



**TRILOBITE
TESTING, INC.**

DRILL STEM TEST REPORT

FLUID SUMMARY

Val Energy Inc LLC
125 N Market St Ste 1110
Wichita, Ks. 67202
ATTN: David Barker

29-30s-11w Barber Co. Ks.
McKay 1-29
Job Ticket: 64948 **DST#: 1**
Test Start: 2019.10.12 @ 04:30:15

Mud and Cushion Information

Mud Type: Gel Chem	Cushion Type:	Oil API:	deg API
Mud Weight: 9.00 lb/gal	Cushion Length: ft	Water Salinity:	3500 ppm
Viscosity: 62.00 sec/qt	Cushion Volume: bbl		
Water Loss: 8.79 in ³	Gas Cushion Type:		
Resistivity: 3500.00 ohm.m	Gas Cushion Pressure: psig		
Salinity: ppm			
Filter Cake: 0.20 inches			

Recovery Information

Recovery Table

Length ft	Description	Volume bbl
60.00	GOCM 5%g 5%o 90%m	0.457
10.00	OSM 100%m	0.076

Total Length: 70.00 ft Total Volume: 0.533 bbl

Num Fluid Samples: 0 Num Gas Bombs: 0 Serial #: None

Laboratory Name: Laboratory Location:

Recovery Comments: Spotted on First10 Ft

Pressure vs. Time

