

KANSAS CORPORATION COMMISSION
OIL & GAS CONSERVATION DIVISION

TEMPORARY ABANDONMENT WELL APPLICATION

OPERATOR: License# _____
 Name: _____
 Address 1: _____
 Address 2: _____
 City: _____ State: _____ Zip: _____ + _____
 Contact Person: _____
 Phone: (_____) _____
 Contact Person Email: _____
 Field Contact Person: _____
 Field Contact Person Phone: (_____) _____

API No. 15- _____
 Spot Description: _____
 _____ - _____ - _____ - _____ Sec. _____ Twp. _____ S. R. _____ E W
 _____ feet from N / S Line of Section
 _____ feet from E / W Line of Section
 GPS Location: Lat: _____, Long: _____
(e.g. xx.xxxxx) (e.g. -xxx.xxxxx)
 Datum: NAD27 NAD83 WGS84
 County: _____ Elevation: _____ GL KB
 Lease Name: _____ Well #: _____
 Well Type: (check one) Oil Gas OG WSW Other: _____
 SWD Permit #: _____ ENHR Permit #: _____
 Gas Storage Permit #: _____
 Spud Date: _____ Date Shut-In: _____

	Conductor	Surface	Production	Intermediate	Liner	Tubing
Size						
Setting Depth						
Amount of Cement						
Top of Cement						
Bottom of Cement						

Casing Fluid Level from Surface: _____ How Determined? _____ Date: _____
 Casing Squeeze(s): _____ to _____ w / _____ sacks of cement, _____ to _____ w / _____ sacks of cement. Date: _____
(top) (bottom) (top) (bottom)
 Do you have a valid Oil & Gas Lease? Yes No
 Depth and Type: Junk in Hole at _____ Tools in Hole at _____ Casing Leaks: Yes No Depth of casing leak(s): _____
(depth) (depth)
 Type Completion: ALT. I ALT. II Depth of: DV Tool: _____ w / _____ sacks of cement Port Collar: _____ w / _____ sack of cement
(depth) (depth)
 Packer Type: _____ Size: _____ Inch Set at: _____ Feet
 Total Depth: _____ Plug Back Depth: _____ Plug Back Method: _____

Geological Data:

Formation Name	Formation Top	Formation Base	Completion Information
1. _____	At: _____	to _____ Feet	Perforation Interval _____ to _____ Feet or Open Hole Interval _____ to _____ Feet
2. _____	At: _____	to _____ Feet	Perforation Interval _____ to _____ Feet or Open Hole Interval _____ to _____ Feet

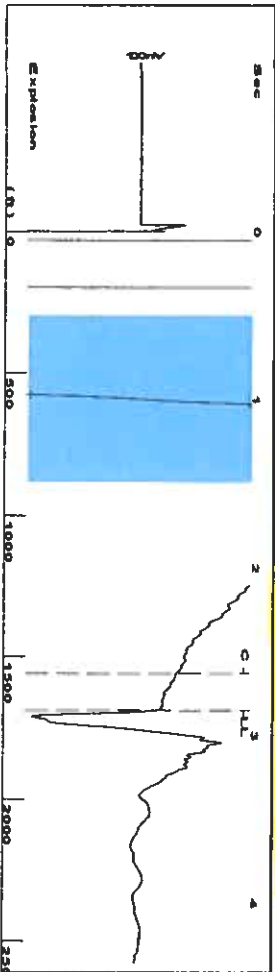
UNDER PENALTY OF PERJURY I HEREBY ATTEST THAT THE INFORMATION CONTAINED HEREIN IS TRUE AND CORRECT TO THE BEST OF MY KNOWLEDGE

Submitted Electronically

Do NOT Write in This Space - KCC USE ONLY	Date Tested: _____	Results: _____	Date Plugged: _____	Date Repaired: _____	Date Put Back in Service: _____
	Review Completed by: _____ Comments: _____				
TA Approved: <input type="checkbox"/> Yes <input type="checkbox"/> Denied Date: _____					

Mail to the Appropriate KCC Conservation Office:

	KCC District Office #1 - 210 E. Frontview, Suite A, Dodge City, KS 67801	Phone 620.682.7933
	KCC District Office #2 - 3450 N. Rock Road, Building 600, Suite 601, Wichita, KS 67226	Phone 316.337.7400
	KCC District Office #3 - 137 E. 21st St., Chanute, KS 66720	Phone 620.902.6450
	KCC District Office #4 - 2301 E. 13th Street, Hays, KS 67601-2651	Phone 785.261.6250



Filter Type High Pass Automatic Collar Count Yes
 Manual Acoustic Velo 1169.74 R/s Manual JTS/sec 18.4502
 Time 2.849 sec
 Joints 53.1917 J/s
 Depth 1686.18 ft

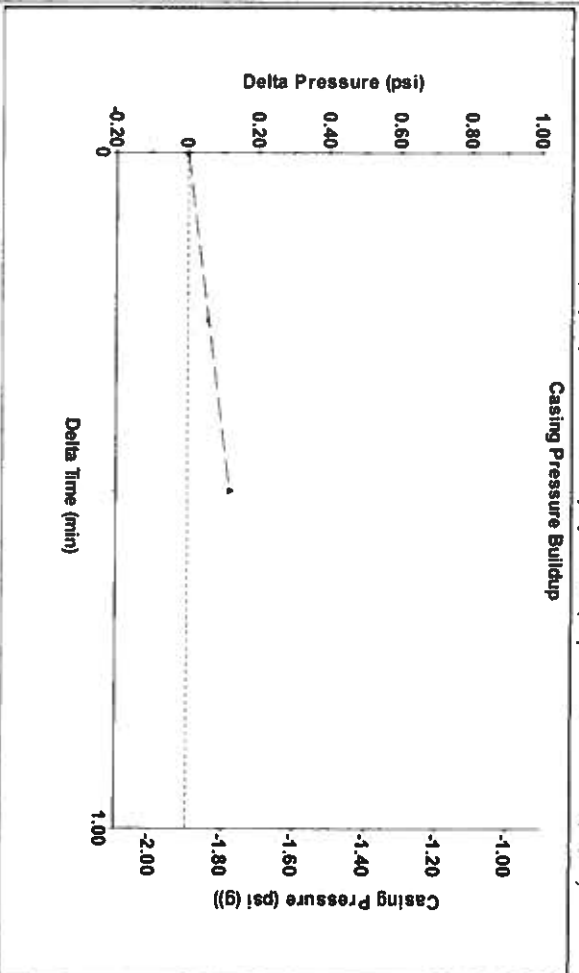
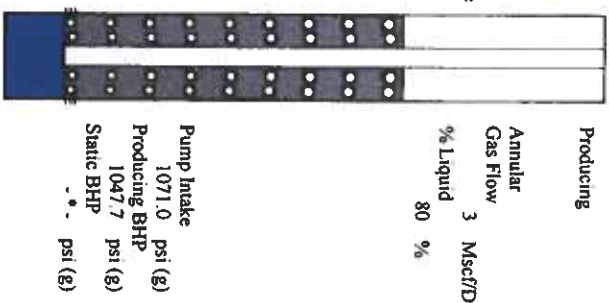


Analysis Method: Automatic

Group: Merrit Energy Company-Ulysses Well: Stacy Lynn 1-22 (acquired on: 11/23/21 09:52:26)

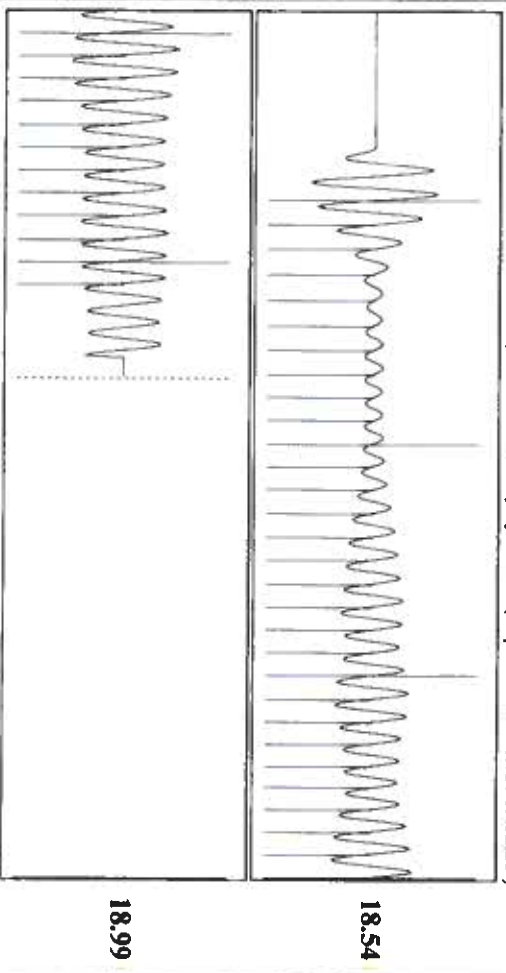
Production	Potential	Casing Pressure	Producing
Current	BBL/D	-1.9 psi (g)	Annular
Oil *	BBL/D	0.1 psi	Gas Flow
Water *	Mscf/D	0.50 min	3 Mscf/D
Gas *		Gas/Liquid Interface Pressure	% Liquid
		-1.3 psi (g)	80 %
IPR Method	Vogel		
PBHP/SBHP			
Production Efficiency	0.0		
Oil 40 deg API		Liquid Level Depth	
Water 1.05 Sp Gr H2O		1686.18 ft	
Gas 0.79 Sp Gr AIR		Pump Intake Depth	
Acoustic Velocity 1183.7 R/s		5739.00 ft	
		Formation Depth	
		5653.00 ft	

Formation Submergence	4053 ft
Total Gaseous Liquid Column HT (TVD)	3270 ft
Equivalent Gas Free Liquid HT (TVVD)	
Acoustic Test	
Tim Frydendall-Fluid Level Technician	



Change in Pressure 0.12 psi PTT18868
 Change in Time 0.50 min Range 0.7 psi

Group: Merrit Energy Company-Ulysses Well: Stacy Lynn 1-22 (acquired on: 11/23/21 09:52:26)



Acoustic Velocity	1183.7 R/s	Joints counted	41
Joints Per Second	18.6703 J/s/sec	Joints to liquid level	53.1917
Depth to liquid level	1686.18 ft	Filter Width	16.4502
Automatic Collar Count	Yes	Time to 1st Collar	0.436

Conservation Division
District Office No. 1
210 E. Frontview, Suite A
Dodge City, KS 67801



Phone: 620-682-7933
<http://kcc.ks.gov/>

Andrew J. French, Chairperson
Dwight D. Keen, Commissioner
Susan K. Duffy, Commissioner

Laura Kelly, Governor

December 02, 2021

Katherine McClurkan
Merit Energy Company, LLC
446 South Road M
Dallas, TX 75240

Re: Temporary Abandonment
API 15-187-20797-00-00
Stacy Lynn 1-22
SW/4 Sec.22-30S-39W
Stanton County, Kansas

Dear Katherine McClurkan:

"Your temporary abandonment (TA) application for the well listed above has been approved. In accordance with K.A.R. 82-3-111 the TA status of this well will expire 12/02/2022.

- * If you return this well to service or plug it, please notify the District Office.
- * If you sell this well you are required to file a Transfer of Operator form, T-1.
- * If the well will remain temporarily abandoned, you must submit a new TA application, CP-111, before 12/02/2022.

You may contact me at the number above if you have questions.

Very truly yours,

Michael Maier"