

KANSAS CORPORATION COMMISSION
OIL & GAS CONSERVATION DIVISION

TEMPORARY ABANDONMENT WELL APPLICATION

OPERATOR: License#
Name:
Address 1:
Address 2:
City: State: Zip:
Contact Person:
Phone:
Contact Person Email:
Field Contact Person:
Field Contact Person Phone:

API No. 15-
Spot Description:
Sec. Twp. S. R.
feet from N / S Line of Section
feet from E / W Line of Section
GPS Location: Lat: , Long:
Datum: NAD27 NAD83 WGS84
County: Elevation: GL KB
Lease Name: Well #:
Well Type: (check one) Oil Gas OG WSW Other:
SWD Permit #: ENHR Permit #:
Gas Storage Permit #:
Spud Date: Date Shut-In:

Table with 7 columns: Conductor, Surface, Production, Intermediate, Liner, Tubing. Rows include Size, Setting Depth, Amount of Cement, Top of Cement, Bottom of Cement.

Casing Fluid Level from Surface: How Determined? Date:
Casing Squeeze(s): to w / sacks of cement, to w / sacks of cement. Date:
Do you have a valid Oil & Gas Lease? Yes No
Depth and Type: Junk in Hole at Tools in Hole at Casing Leaks: Yes No Depth of casing leak(s):
Type Completion: ALT. I ALT. II Depth of: DV Tool: w / sacks of cement Port Collar: w / sack of cement
Packer Type: Size: Inch Set at: Feet
Total Depth: Plug Back Depth: Plug Back Method:

Geological Date:

Table with 4 columns: Formation Name, Formation Top, Formation Base, Completion Information. Rows 1 and 2.

UNDER PENALTY OF PERJURY I HEREBY ATTEST THAT THE INFORMATION CONTAINED HEREIN IS TRUE AND CORRECT TO THE BEST OF MY KNOWLEDGE

Submitted Electronically

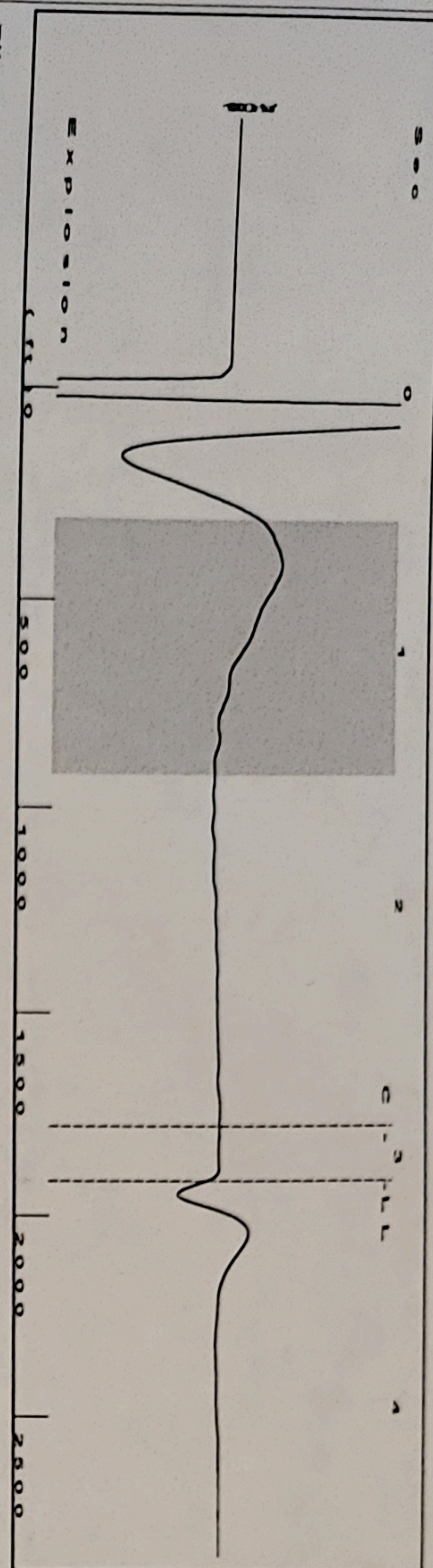
Do NOT Write in This Space - KCC USE ONLY
Date Tested: Results: Date Plugged: Date Repaired: Date Put Back in Service:
Review Completed by: Comments:
TA Approved: Yes Denied Date:

Mail to the Appropriate KCC Conservation Office:

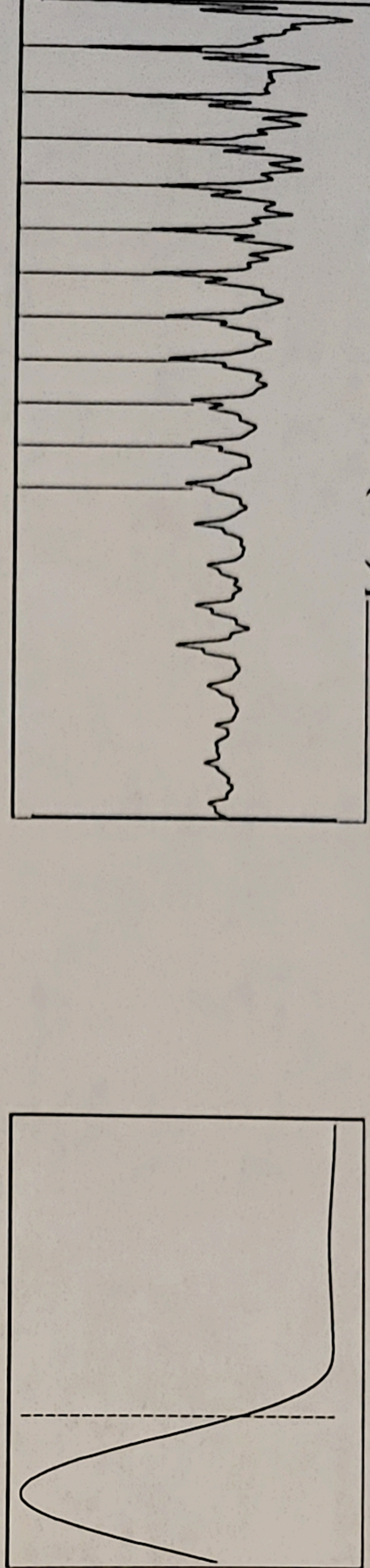
Table with 3 columns: District Office, Address, Phone. Rows for District Office #1, #2, #3, #4.

Shot @ 3:00 AM Off

Group: Liberal TA'd Wells Well: Illinois A-2 (acquired on: 11/30/21 09:15:15)



Filter Type High Pass Automatic Collar Count Yes
 Manual Acoustic Velo 1200.76 f/s Manual JTS/sec 18.9394
 Time 3.095 sec
 Joints 60.3383 J/s
 Depth 1912.72 ft

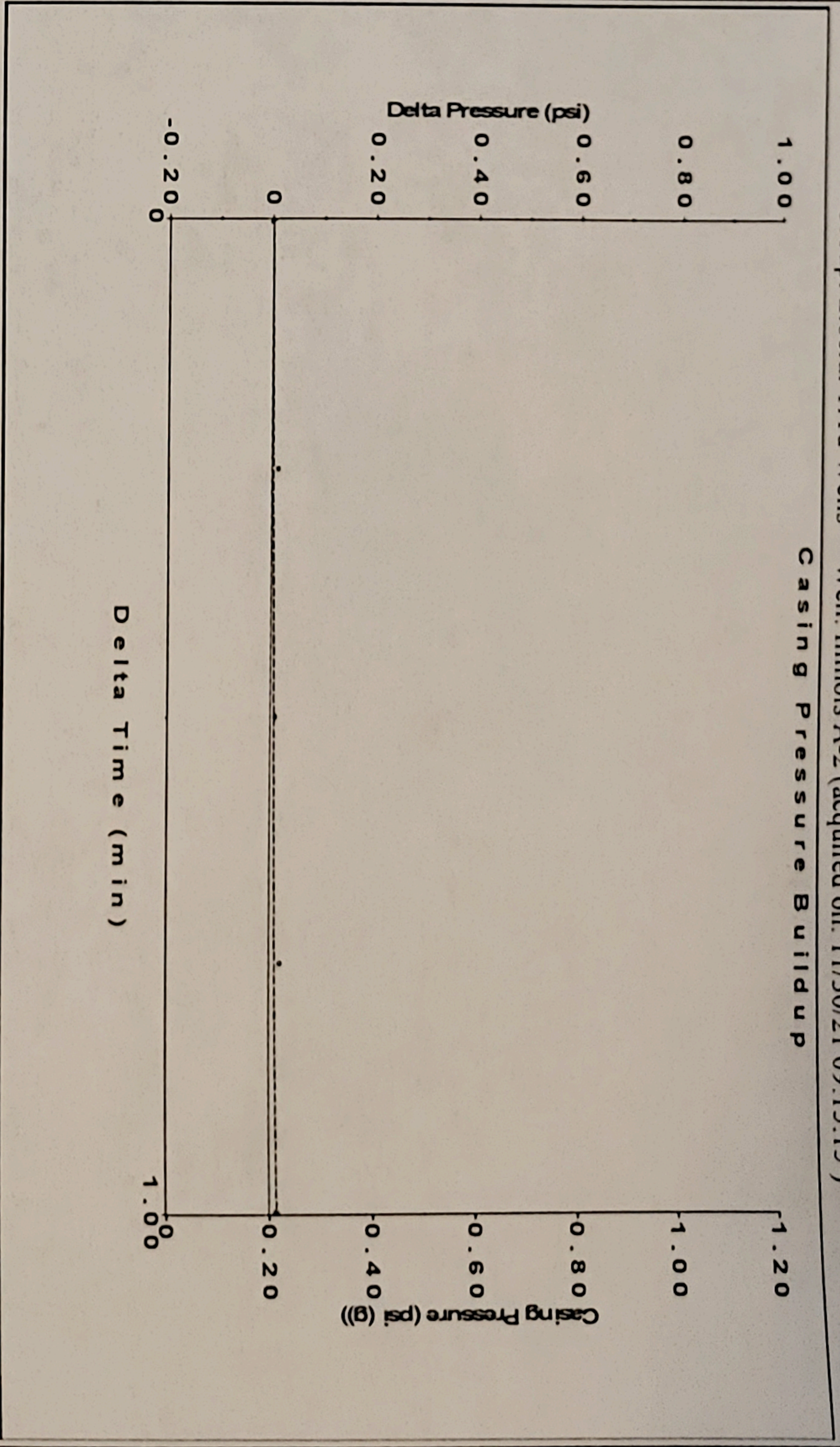


Analysis Method: Automatic

Group: Liberal TA'd Wells Well: Illinois A-2 (acquired on: 11/30/21 09:15:15)

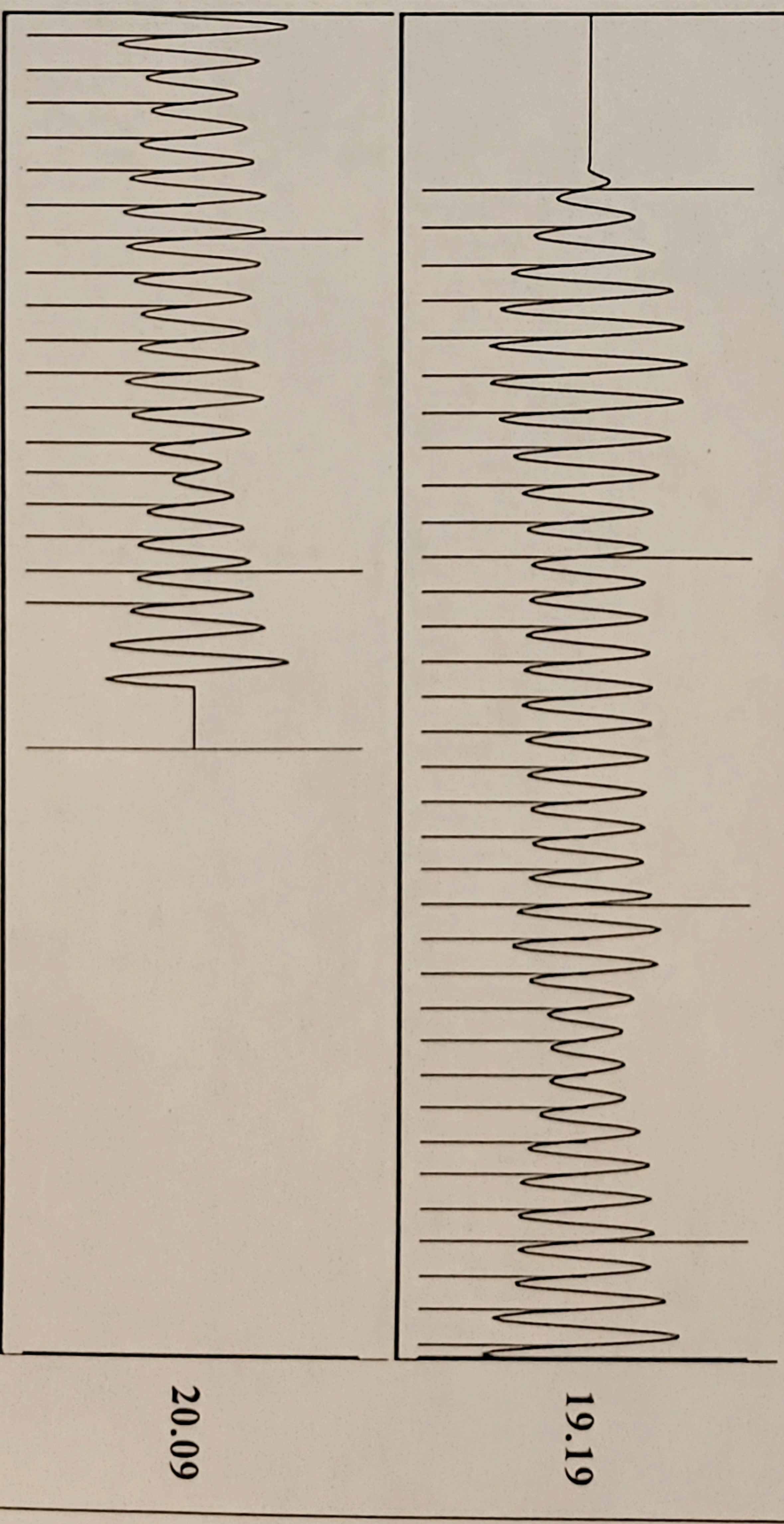
Production	Potential	Casing Pressure	Static
Current	Oil - * - BBL/D	0.2 psi (g)	Oil Column Height
Water - * -	Water - * - BBL/D	Casing Pressure Buildup	MD 0 ft
Gas - * -	Gas - * - Mscf/D	0.0 psi	Gas/Liquid Interface Pressure
IPR Method	Vogel	1.00 min	1.0 psi (g)
PBHP/SBHP	Production Efficiency	0.0	
Oil 40 deg API	Liquid Level Depth	1912.72 ft	Water Column Height
Water 1.05 Sp.Gr.H2O	Tubing Intake Depth	6129.00 ft	MD 4258 ft
Gas 0.74 Sp.Gr.AIR	Formation Depth	6171.00 ft	
Acoustic Velocity	1236.01 ft/s		Static BHP
			1937.0 psi (g)

Group: Liberal TA'd Wells Well: Illinois A-2 (acquired on: 11/30/21 09:15:15)



Change in Pressure 0.01 psi PT11249
 Change in Time 1.00 min Range 0 - ? psi

Group: Liberal TA'd Wells Well: Illinois A-2 (acquired on: 11/30/21 09:15:15)



Acoustic Velocity 1236.01 ft/s Joints counted 51
 Joints Per Second 19.4954 J/s/sec Joints to liquid level 60.3383
 Depth to liquid level 1912.72 ft Filter Width 16.9394
 Automatic Collar Count Yes Time to 1st Collar 20.9394 2.876

December 02, 2021

Katherine McClurkan
Merit Energy Company, LLC
13727 Noel Road, Suite 1200
Dallas, TX 75240-7362

Re: Temporary Abandonment
API 15-189-22478-00-00
Illinois A 2
SE/4 Sec.20-34S-35W
Stevens County, Kansas

Dear Katherine McClurkan:

"Your temporary abandonment (TA) application for the well listed above has been approved. In accordance with K.A.R. 82-3-111 the TA status of this well will expire 12/02/2022.

- * If you return this well to service or plug it, please notify the District Office.
- * If you sell this well you are required to file a Transfer of Operator form, T-1.
- * If the well will remain temporarily abandoned, you must submit a new TA application, CP-111, before 12/02/2022.

You may contact me at the number above if you have questions.

Very truly yours,

Michael Maier"