

KANSAS CORPORATION COMMISSION
OIL & GAS CONSERVATION DIVISION

TEMPORARY ABANDONMENT WELL APPLICATION

OPERATOR: License#
Name:
Address 1:
Address 2:
City: State: Zip:
Contact Person:
Phone:
Contact Person Email:
Field Contact Person:
Field Contact Person Phone:

API No. 15-
Spot Description:
Sec. Twp. S. R.
GPS Location: Lat: Long:
Datum: NAD27 NAD83 WGS84
County: Elevation:
Lease Name: Well #:
Well Type: Oil Gas OG WSW Other:
SWD Permit #: ENHR Permit #:
Gas Storage Permit #:
Spud Date: Date Shut-In:

Table with 7 columns: Conductor, Surface, Production, Intermediate, Liner, Tubing. Rows include Size, Setting Depth, Amount of Cement, Top of Cement, Bottom of Cement.

Casing Fluid Level from Surface: How Determined? Date:
Casing Squeeze(s): to w / sacks of cement, to w / sacks of cement. Date:
Do you have a valid Oil & Gas Lease? Yes No
Depth and Type: Junk in Hole at Tools in Hole at Casing Leaks: Yes No Depth of casing leak(s):
Type Completion: ALT. I ALT. II Depth of: DV Tool: w / sacks of cement Port Collar: w / sack of cement
Packer Type: Size: Inch Set at: Feet
Total Depth: Plug Back Depth: Plug Back Method:

Geological Date:

Table with 4 columns: Formation Name, Formation Top, Formation Base, Completion Information. Rows 1 and 2.

UNDER PENALTY OF PERJURY I HEREBY ATTEST THAT THE INFORMATION CONTAINED HEREIN IS TRUE AND CORRECT TO THE BEST OF MY KNOWLEDGE

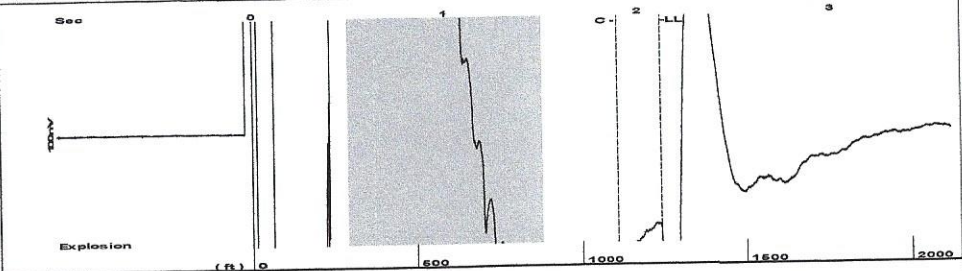
Submitted Electronically

Do NOT Write in This Space - KCC USE ONLY
Date Tested: Results: Date Plugged: Date Repaired: Date Put Back in Service:
Review Completed by: Comments:
TA Approved: Yes Denied Date:

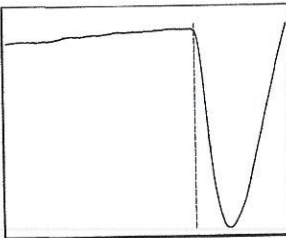
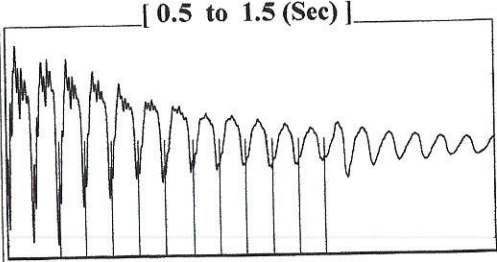
Mail to the Appropriate KCC Conservation Office:

Map of Kansas with 4 numbered districts and corresponding office addresses and phone numbers.

Group: Coldwater Well: Box Ranch A 1-12 (acquired on: 10/19/21 11:37:34 )

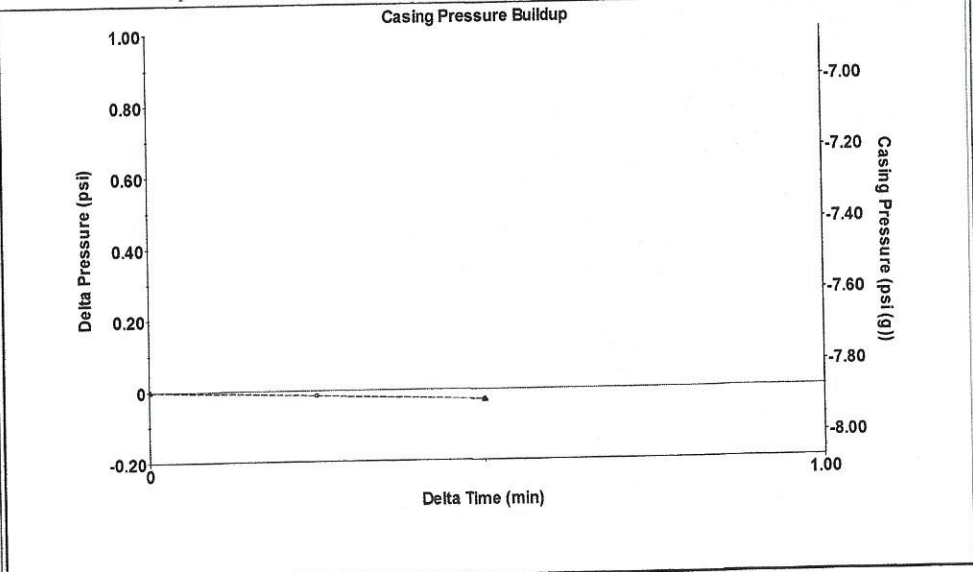


Filter Type High Pass Automatic Collar Count Yes Time 2.119 sec  
 Manual Acoustic Velo 1169.74 ft/s Manual JTS/sec 18.4502 Joints 39.1441 Jts  
 Depth 1240.87 ft



Analysis Method: Automatic

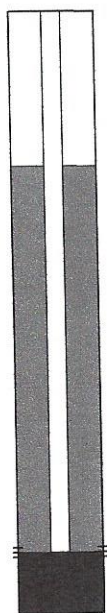
Group: Coldwater Well: Box Ranch A 1-12 (acquired on: 10/19/21 11:37:34 )



Change in Pressure -0.03 psi PT13440  
 Change in Time 0.50 min Range 0 - ? psi

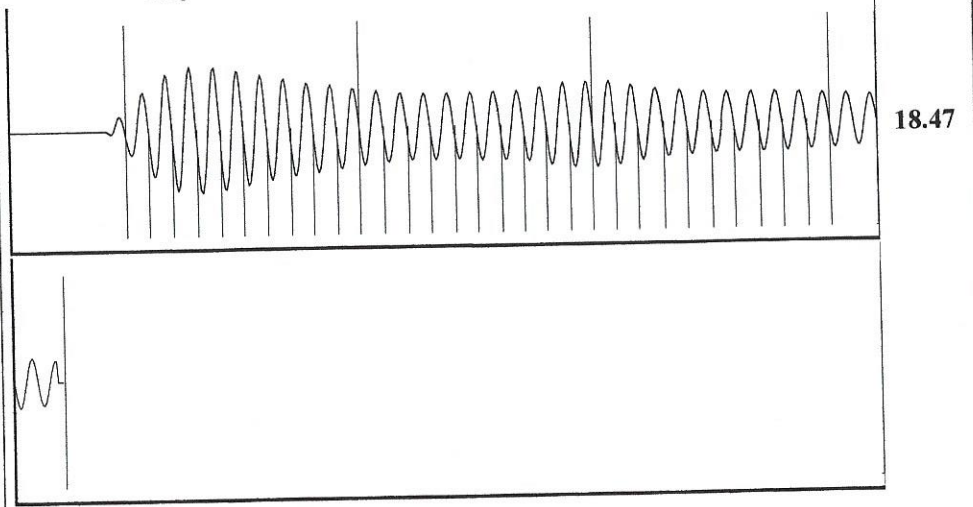
Group: Coldwater Well: Box Ranch A 1-12 (acquired on: 10/19/21 11:37:34 )

Production		Casing Pressure	Producing
Current	Potential	-7.9 psi (g)	
Oil - * -	- * - BBL/D	Casing Pressure Buildup	Annular Gas Flow
Water - * -	- * - BBL/D	-0.0 psi	0 Mscf/D
Gas - * -	- * - Mscf/D	0.50 min	% Liquid
		Gas/Liquid Interface Pressure	100 %
		-7.6 psi (g)	
IPR Method	Vogel	Liquid Level Depth	
PBHP/SBHP	- * -	1240.87 ft	
Production Efficiency	0.0	Pump Intake Depth	
		6297.00 ft	
Oil 40 deg.API		Formation Depth	
Water 1.05 Sp.Gr.H2O		6294.00 ft	
Gas 0.80 Sp.Gr.AIR			
Acoustic Velocity	1171.18 ft/s		
Formation Submergence			
Total Gaseous Liquid Column HT (TVD)	5056 ft		
Equivalent Gas Free Liquid HT (TVD)	5056 ft		



Pump Intake 1602.4 psi (g)  
 Producing BHP 1601.5 psi (g)  
 Static BHP - \* - psi (g)

Group: Coldwater Well: Box Ranch A 1-12 (acquired on: 10/19/21 11:37:34 )



Acoustic Velocity 1171.18 ft/s Joints counted 30  
 Joints Per Second 18.4729 jts/sec Joints to liquid level 39.1441  
 Depth to liquid level 1240.87 ft Filter Width 16.4502 20.4502  
 Automatic Collar Count Yes Time to 1st Collar 0.268 1.892

December 02, 2021

Loveness Mpanje  
F. G. Holl Company L.L.C.  
9431 E CENTRAL STE 100  
WICHITA, KS 67206-2563

Re: Temporary Abandonment  
API 15-033-21586-00-00  
BOX RANCH "A" 1-12  
NW/4 Sec.12-35S-20W  
Comanche County, Kansas

Dear Loveness Mpanje:

"Your temporary abandonment (TA) application for the well listed above has been approved. In accordance with K.A.R. 82-3-111 the TA status of this well will expire 12/02/2022.

- \* If you return this well to service or plug it, please notify the District Office.
- \* If you sell this well you are required to file a Transfer of Operator form, T-1.
- \* If the well will remain temporarily abandoned, you must submit a new TA application, CP-111, before 12/02/2022.

You may contact me at the number above if you have questions.

Very truly yours,

Michael Maier"