

KANSAS CORPORATION COMMISSION
OIL & GAS CONSERVATION DIVISION

TEMPORARY ABANDONMENT WELL APPLICATION

OPERATOR: License#
Name:
Address 1:
Address 2:
City: State: Zip:
Contact Person:
Phone:
Contact Person Email:
Field Contact Person:
Field Contact Person Phone:

API No. 15-
Spot Description:
Sec. Twp. S. R.
GPS Location: Lat: Long:
Datum: NAD27 NAD83 WGS84
County: Elevation:
Lease Name: Well #:
Well Type: Oil Gas OG WSW Other:
SWD Permit #: ENHR Permit #:
Gas Storage Permit #:
Spud Date: Date Shut-In:

Table with 7 columns: Conductor, Surface, Production, Intermediate, Liner, Tubing. Rows include Size, Setting Depth, Amount of Cement, Top of Cement, Bottom of Cement.

Casing Fluid Level from Surface: How Determined? Date:
Casing Squeeze(s): to w / sacks of cement, to w / sacks of cement. Date:
Do you have a valid Oil & Gas Lease? Yes No
Depth and Type: Junk in Hole at Tools in Hole at Casing Leaks: Yes No Depth of casing leak(s):
Type Completion: ALT. I ALT. II Depth of: DV Tool: w / sacks of cement Port Collar: w / sack of cement
Packer Type: Size: Inch Set at: Feet
Total Depth: Plug Back Depth: Plug Back Method:

Geological Date:

Table with 4 columns: Formation Name, Formation Top, Formation Base, Completion Information. Rows 1 and 2.

UNDER PENALTY OF PERJURY I HEREBY ATTEST THAT THE INFORMATION CONTAINED HEREIN IS TRUE AND CORRECT TO THE BEST OF MY KNOWLEDGE

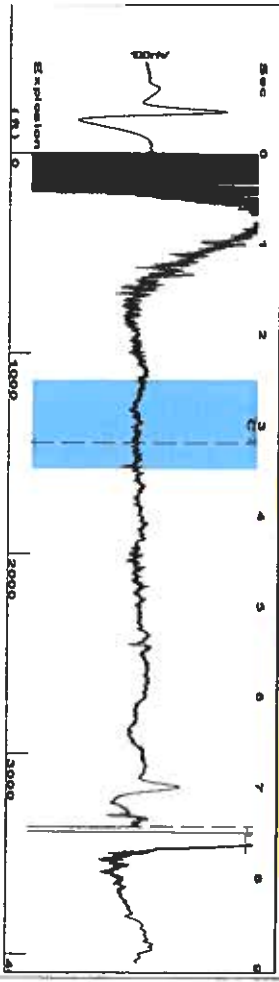
Submitted Electronically

Form with fields: Do NOT Write in This Space - KCC USE ONLY, Date Tested, Results, Date Plugged, Date Repaired, Date Put Back in Service, Review Completed by, Comments, TA Approved: Yes Denied, Date.

Mail to the Appropriate KCC Conservation Office:

Table with 2 columns: Office Address, Phone. Rows for KCC District Office #1, #2, #3, #4.





Filter Type High Pass Automatic Collar Count Yes  
 Manual Acoustic Vel 928.258 ft/s Manual JTS/sec 14.6413  
 Time 7.434 sec  
 Joints 106.032 Jts  
 Depth 3361.20 ft



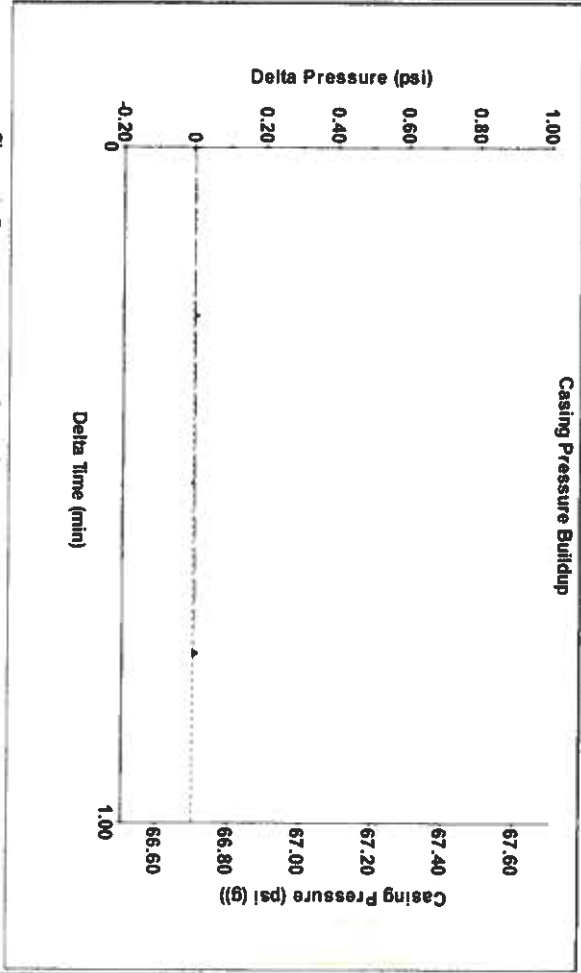
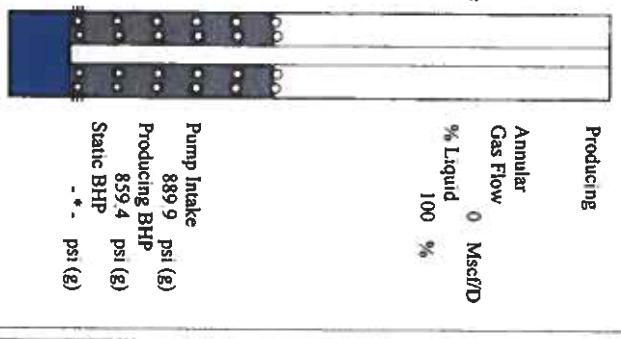
**Analysis Method: Automatic**

<b>Production</b>	<b>Current</b>	<b>Potential</b>	<b>Casing Pressure</b>	<b>Producing</b>
Oil	Oil	BBL/D	66.7 psi (g)	Annular
Water	Water	BBL/D	Casing Pressure Buildup	Gas Flow
Gas	Gas	Mscf/D	0.006 psi	% Liquid
			0.75 min	0 Mscf/D
<b>IPR Method</b>	<b>Vogel</b>	<b>Gas/Liquid Interface Pressure</b>		
PBHP/SBHP	0.0	77.4 psi (g)		
<b>Production Efficiency</b>				
Oil	40 deg API	<b>Liquid Level Depth</b>		
Water	1.05 Sp.Gr.H2O	3361.20 ft		
Gas	1.05 Sp.Gr.AIR	<b>Pump Intake Depth</b>		
		5850.00 ft		
<b>Acoustic Velocity</b>		<b>Formation Depth</b>		
		5751.00 ft		

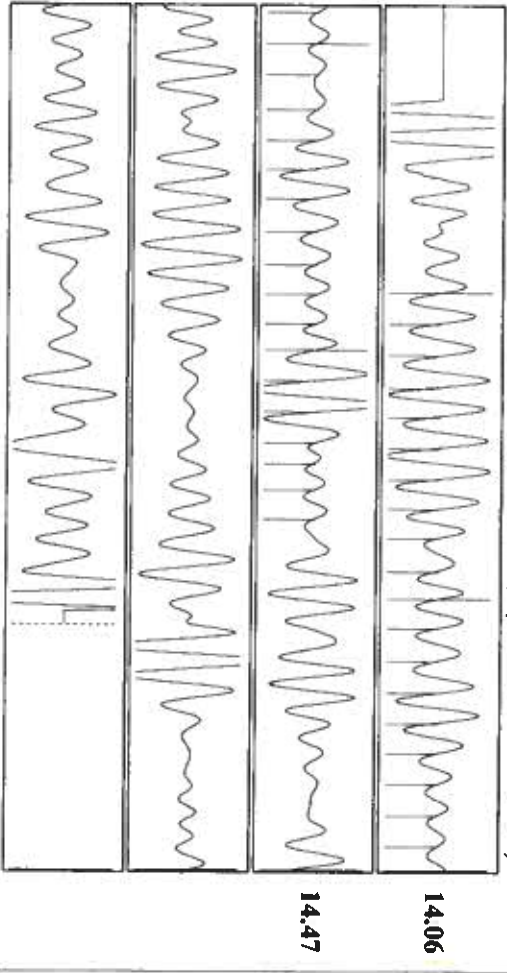
**Formation Submergence**  
 Total Gaseous Liquid Column HT (TVD) 2489 ft  
 Equivalent Gas Free Liquid HT (TVD) 2489 ft

Acoustic Test

Tim Frydendall-Fluid Level Technician



Change in Pressure 0.01 psi PTI 8868  
 Change in Time 0.75 min Range 0 - 7 psi



Acoustic Velocity 904.279 ft/s Joints counted 36  
 Joints Per Second 14.2631 Jts/sec Joints to liquid level 106.032  
 Depth to liquid level 3361.2 ft Filter Width 12.6413  
 Automatic Collar Count Yes Time to 1st Collar 0.664 3.188

December 02, 2021

Katheirne McClurkan  
Merit Energy Company, LLC  
13727 Noel Road, Suite 1200  
Dallas, TX 75240

Re: Temporary Abandonment  
API 15-067-21717-00-00  
Sullivan D 1  
NW/4 Sec.08-30S-38W  
Grant County, Kansas

Dear Katheirne McClurkan:

Your application for Temporary Abandonment (TA) for the above-listed well is denied for the following reasons(s):

**Shut-in Over 10 years**

Pursuant to K.A.R. 82-3-111, the well must be plugged or returned to service by 01/01/2022.

If you wish to instead file an application for an exception to the 10-year limitation of K.A.R. 82-3-111, demonstrating why it is necessary to TA the well for more than 10 years, then you must file the application for an exception by 01/01/2022.

**This deadline does NOT override any compliance deadline given to you in any Commission Order.**

You may contact me if you have any questions.

Sincerely,  
Michael Maier  
KCC DISTRICT 1