

KANSAS CORPORATION COMMISSION
OIL & GAS CONSERVATION DIVISION

Form must be Typed
Form must be signed

TEMPORARY ABANDONMENT WELL APPLICATION

All blanks must be complete

OPERATOR: License#
Name:
Address 1:
Address 2:
City: State: Zip:
Contact Person:
Phone:
Contact Person Email:
Field Contact Person:
Field Contact Person Phone:

API No. 15-
Spot Description:
Sec. Twp. S. R.
feet from N / S Line of Section
feet from E / W Line of Section
GPS Location: Lat: , Long:
Datum: NAD27 NAD83 WGS84
County: Elevation: GL KB
Lease Name: Well #:
Well Type: Oil Gas OG WSW Other:
SWD Permit #: ENHR Permit #:
Gas Storage Permit #:
Spud Date: Date Shut-In:

Table with 7 columns: Conductor, Surface, Production, Intermediate, Liner, Tubing. Rows include Size, Setting Depth, Amount of Cement, Top of Cement, Bottom of Cement.

Casing Fluid Level from Surface: How Determined? Date:
Casing Squeeze(s): to w / sacks of cement, to w / sacks of cement. Date:
Do you have a valid Oil & Gas Lease? Yes No
Depth and Type: Junk in Hole at Tools in Hole at Casing Leaks: Yes No Depth of casing leak(s):
Type Completion: ALT. I ALT. II Depth of: DV Tool: w / sacks of cement Port Collar: w / sack of cement
Packer Type: Size: Inch Set at: Feet
Total Depth: Plug Back Depth: Plug Back Method:

Geological Data:

Table with 4 columns: Formation Name, Formation Top, Formation Base, Completion Information. Rows 1 and 2.

UNDER PENALTY OF PERJURY I HEREBY ATTEST THAT THE INFORMATION CONTAINED HEREIN IS TRUE AND CORRECT TO THE BEST OF MY KNOWLEDGE

Submitted Electronically

Do NOT Write in This Space - KCC USE ONLY
Date Tested: Results: Date Plugged: Date Repaired: Date Put Back in Service:
Review Completed by: Comments:
TA Approved: Yes Denied Date:

Mail to the Appropriate KCC Conservation Office:

Table with 3 columns: District Office #, Address, Phone. Rows 1-4.

OMETER COMPANY PHONE-940-767-4334

ECHOMETER MODEL M V3.0.2
SERIAL NO: 6719
ECHOMETER COMPANY
5001 DITTO LANE
WICHITA FALLS, TEXAS 76302
PHONE 940 - 767 - 4334
FAX 940 - 723 - 7507
E-MAIL INFO@ECHOMETER.COM

ECHOMETER COMPANY PHONE-940-767-4334

POWER ON
SELF TEST

PASS

BATTERY
12.6 VOLTS

TURN
ON
CHART
DRIVE
TO
TEST
WELL

ECHOMETER COMPANY PHONE-940-767-4334

ECHOMETER

WELL Hess 6-32
CASING PRESSURE
 ΔP
 ΔT
PRODUCTION RATE

JOIN
DIST
PBHF
SBHF
PROC
MAX

ECHOMETER COMPANY PHONE-940-767-4334

ECHOMETER COMPANY PHONE-940-767-4334

JOINTS TO LIQUID.....
 DISTANCE TO LIQUID.....
 PBHP.....
 SBHP.....
 PROD RATE EFF, %.....
 MAX PRODUCTION.....

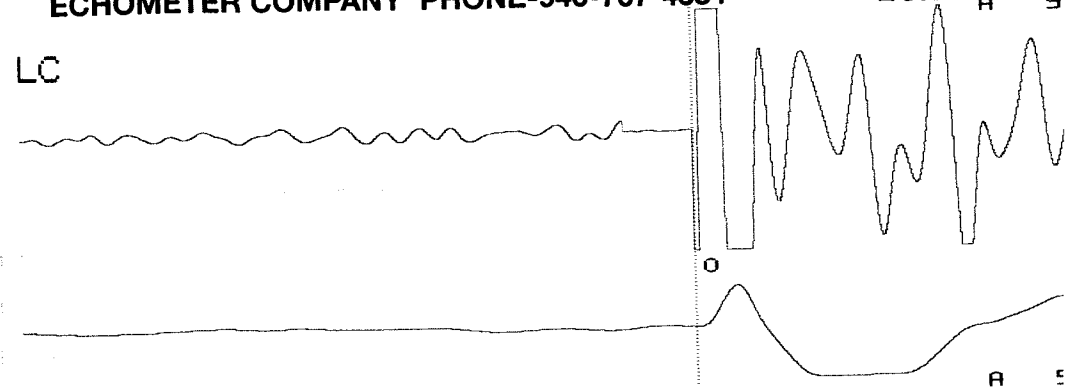
NO Detectable fluid

11/08/2021 13:24:12
 QUIET WELL
 LOWER COLLARS A: 9.4
 P-P 0.044 mV
 LIQUID LEVEL A: 5.7
 P-P 0.199 mV

GENERATE PULSE
 12.5 VOLTS

ECHOMETER COMPANY PHONE-940-767-4334

ECHOMETER

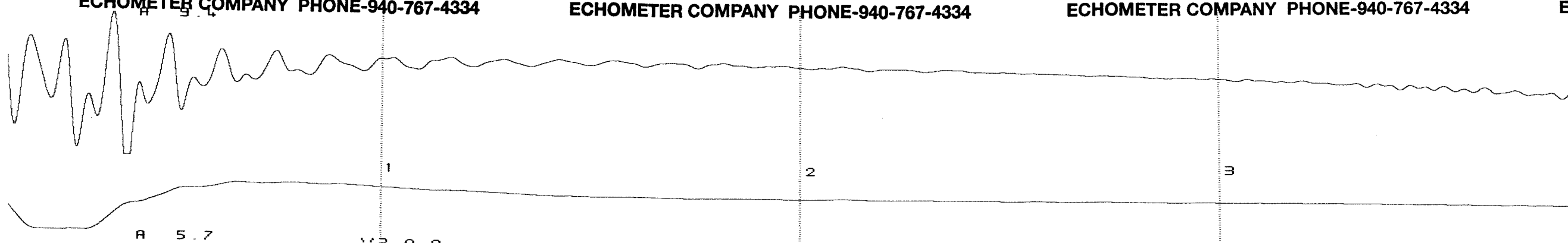


ECHOMETER COMPANY PHONE-940-767-4334

ECHOMETER COMPANY PHONE-940-767-4334

ECHOMETER COMPANY PHONE-940-767-4334

E



A 5.7

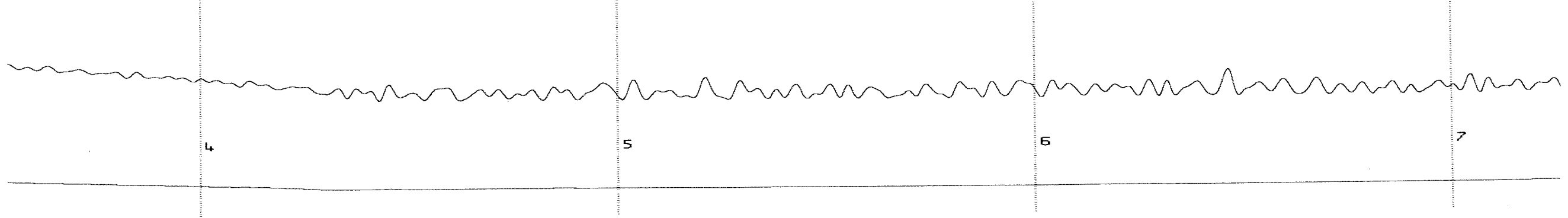
1 2 3

334

ECHOMETER COMPANY PHONE-940-767-4334

ECHOMETER COMPANY PHONE-940-767-4334

ECHOMETER COMPANY PHONE-940-767-4334

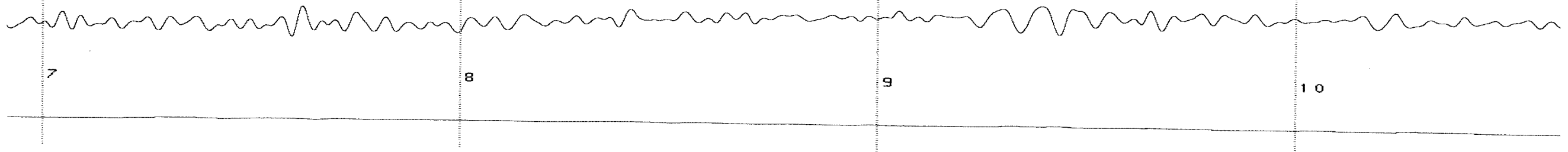


40-767-4334

ECHOMETER COMPANY PHONE-940-767-4334

ECHOMETER COMPANY PHONE-940-767-4334

ECHOMETER COMPANY PHONE-940-767-4334



PHONE-940-767-4334

ECHOMETER COMPANY PHONE-940-767-4334

ECHOMETER COMPANY PHONE-940-767-4334

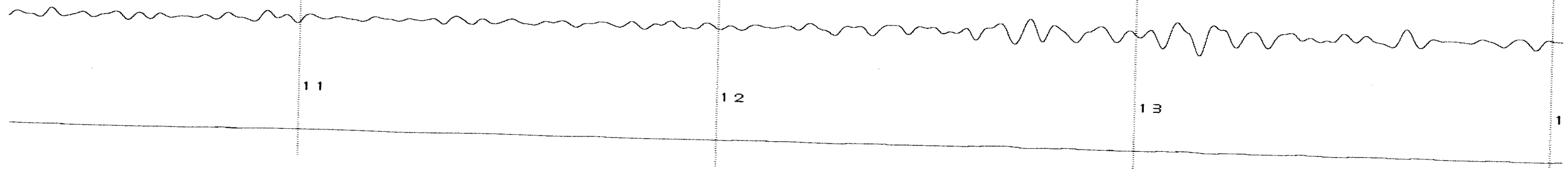
ECHOMETER COMPANY PHONE-94

1 1

1 2

1 3

1



ANY PHONE-940-767-4334

ECHOMETER COMPANY PHONE-940-767-4334

ECHOMETER COMPANY PHONE-940-767-4334

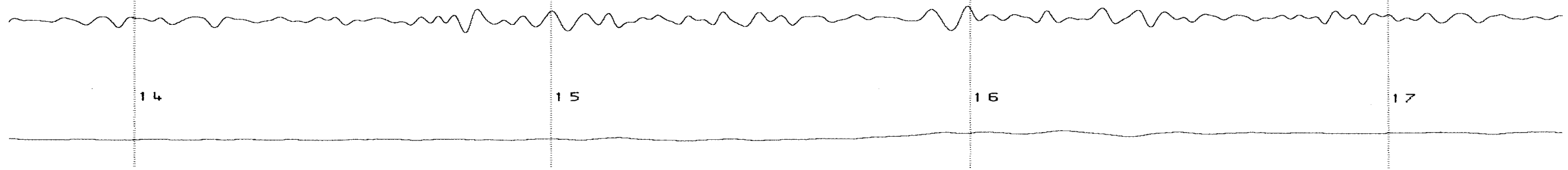
ECHOMETER COMPANY PHC

14

15

16

17



OMPANY PHONE-940-767-4334

ECHOMETER COMPANY PHONE-940-767-4334

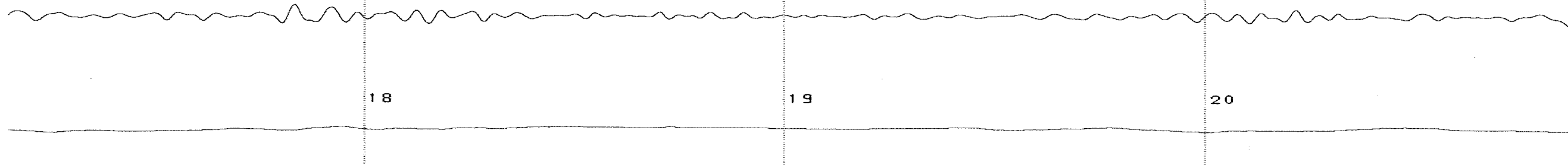
ECHOMETER COMPANY PHONE-940-767-4334

ECHOMETER COMPANY

18

19

20



December 03, 2021

Michael J. Reilly
Grand Mesa Operating Company
1700 N WATERFRONT PKWY BLDG 600
WICHITA, KS 67206-5514

Re: Temporary Abandonment
API 15-063-21941-00-00
HESS 6-32
NW/4 Sec.32-13S-31W
Gove County, Kansas

Dear Michael J. Reilly:

"Your temporary abandonment (TA) application for the well listed above has been approved. In accordance with K.A.R. 82-3-111 the TA status of this well will expire 12/03/2022.

- * If you return this well to service or plug it, please notify the District Office.
- * If you sell this well you are required to file a Transfer of Operator form, T-1.
- * If the well will remain temporarily abandoned, you must submit a new TA application, CP-111, before 12/03/2022.

You may contact me at the number above if you have questions.

Very truly yours,

RICHARD WILLIAMS"