

KANSAS CORPORATION COMMISSION
OIL & GAS CONSERVATION DIVISION

TEMPORARY ABANDONMENT WELL APPLICATION

OPERATOR: License#
Name:
Address 1:
Address 2:
City: State: Zip:
Contact Person:
Phone:
Contact Person Email:
Field Contact Person:
Field Contact Person Phone:

API No. 15-
Spot Description:
Sec. Twp. S. R.
GPS Location: Lat, Long
Datum: NAD27, NAD83, WGS84
County: Elevation:
Lease Name: Well #:
Well Type: Oil, Gas, OG, WSW, Other
SWD Permit #: ENHR Permit #:
Gas Storage Permit #:
Spud Date: Date Shut-In:

Table with 7 columns: Conductor, Surface, Production, Intermediate, Liner, Tubing. Rows include Size, Setting Depth, Amount of Cement, Top of Cement, Bottom of Cement.

Casing Fluid Level from Surface: How Determined? Date:
Casing Squeeze(s): to w / sacks of cement, to w / sacks of cement. Date:
Do you have a valid Oil & Gas Lease? Yes No
Depth and Type: Junk in Hole at Tools in Hole at Casing Leaks: Yes No Depth of casing leak(s):
Type Completion: ALT. I ALT. II Depth of: DV Tool: w / sacks of cement Port Collar: w / sack of cement
Packer Type: Size: Inch Set at: Feet
Total Depth: Plug Back Depth: Plug Back Method:

Geological Data:

Table with 4 columns: Formation Name, Formation Top, Formation Base, Completion Information. Rows 1 and 2.

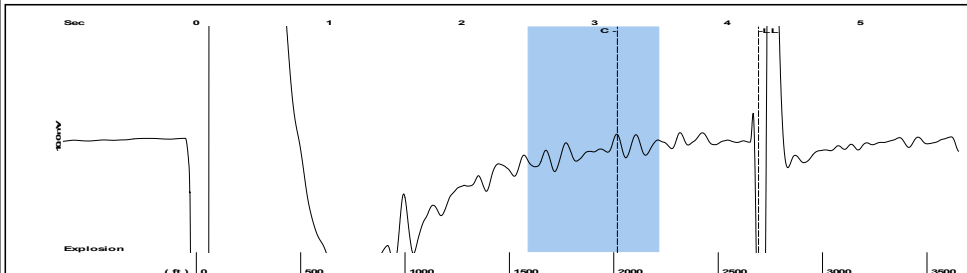
UNDER PENALTY OF PERJURY I HEREBY ATTEST THAT THE INFORMATION CONTAINED HEREIN IS TRUE AND CORRECT TO THE BEST OF MY KNOWLEDGE

Submitted Electronically

Form with fields: Do NOT Write in This Space - KCC USE ONLY, Date Tested, Results, Date Plugged, Date Repaired, Date Put Back in Service, Review Completed by, Comments, TA Approved: Yes Denied, Date.

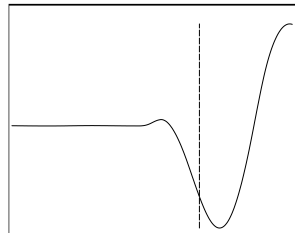
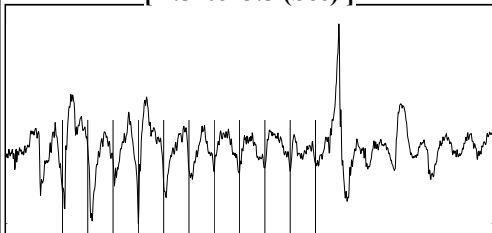
Mail to the Appropriate KCC Conservation Office:

Table with 2 columns: Office Address, Phone. Rows for KCC District Office #1, #2, #3, #4.



Filter Type High Pass Automatic Collar Count Yes Time 4.236 sec
 Manual Acoustic Veloc 1219.23 ft/s Manual JTS/sec 19.2308 Joints 84.9544 Jts
 Depth 2693.05 ft

[2.5 to 3.5 (Sec)]

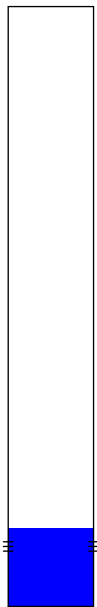


Analysis Method: Automatic

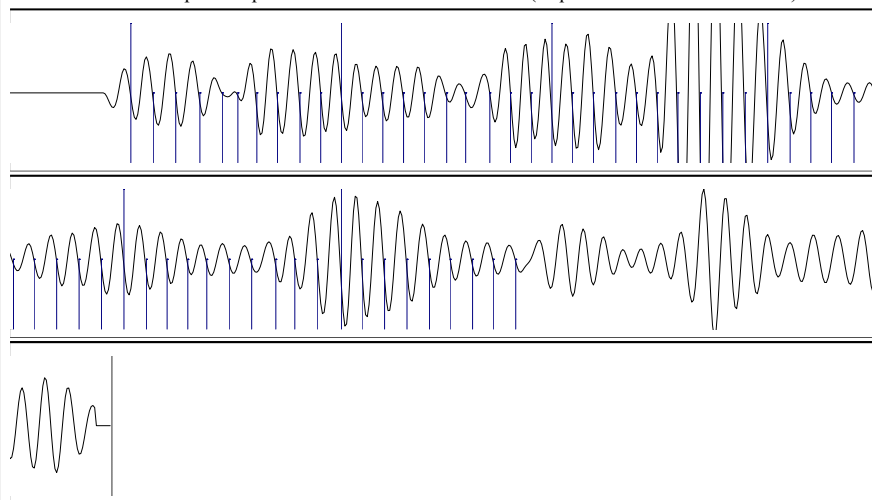


Change in Pressure 0.00 psi PT18514
 Range 0 - ? psi
 Change in Time 0.00 min

Production		Potential	Casing Pressure
Current			49.3 psi (g)
Oil - *-	- *-	BBL/D	Casing Pressure Buildup
Water - *-	- *-	BBL/D	- *- psi
Gas - *-	- *-	Mscf/D	- *- min
IPR Method		Vogel	Gas/Liquid Interface Pressure
PBHP/SBHP	- *-		- *- psi (g)
Production Efficiency	0.0		
Liquid Level Depth			
Oil 40 deg.API		2693.05 ft	
Water 1.05 Sp.Gr.H2O			
Gas 0.73 Sp.Gr.AIR			
Pump Intake Depth			
Acoustic Velocity 1271.51 ft/s			
		Formation Depth	2800.00 ft



Static
 Oil Column Height MD 0 ft
 Water Column Height MD - *- ft
 Static BHP - *- psi (g)



Acoustic Velocity	1271.51 ft/s	Joints counted	58
Joints Per Second	20.0553 jts/sec	Joints to liquid level	84.9544
Depth to liquid level	2693.05 ft	Filter Width	17.2308 21.2308
Automatic Collar Count	Yes	Time to 1st Collar	0.28 3.172

December 09, 2021

Jose Reyes
American Warrior, Inc.
PO BOX 399
GARDEN CITY, KS 67846-0399

Re: Temporary Abandonment
API 15-055-20764-00-00
BRINKMEYER 1-30
NW/4 Sec.30-23S-31W
Finney County, Kansas

Dear Jose Reyes:

"Your temporary abandonment (TA) application for the well listed above has been approved. In accordance with K.A.R. 82-3-111 the TA status of this well will expire 12/09/2022.

- * If you return this well to service or plug it, please notify the District Office.
- * If you sell this well you are required to file a Transfer of Operator form, T-1.
- * If the well will remain temporarily abandoned, you must submit a new TA application, CP-111, before 12/09/2022.

You may contact me at the number above if you have questions.

Very truly yours,

Michael Maier"