

KANSAS CORPORATION COMMISSION
OIL & GAS CONSERVATION DIVISION

Form must be Typed
Form must be signed

TEMPORARY ABANDONMENT WELL APPLICATION

All blanks must be complete

OPERATOR: License#
Name:
Address 1:
Address 2:
City: State: Zip:
Contact Person:
Phone:
Contact Person Email:
Field Contact Person:
Field Contact Person Phone:

API No. 15-
Spot Description:
Sec. Twp. S. R.
feet from N / S Line of Section
feet from E / W Line of Section
GPS Location: Lat: , Long:
Datum: NAD27 NAD83 WGS84
County: Elevation: GL KB
Lease Name: Well #:
Well Type: Oil Gas OG WSW Other:
SWD Permit #: ENHR Permit #:
Gas Storage Permit #:
Spud Date: Date Shut-In:

Table with 7 columns: Conductor, Surface, Production, Intermediate, Liner, Tubing. Rows include Size, Setting Depth, Amount of Cement, Top of Cement, Bottom of Cement.

Casing Fluid Level from Surface: How Determined? Date:
Casing Squeeze(s): to w / sacks of cement, to w / sacks of cement. Date:
Do you have a valid Oil & Gas Lease? Yes No
Depth and Type: Junk in Hole at Tools in Hole at Casing Leaks: Yes No Depth of casing leak(s):
Type Completion: ALT. I ALT. II Depth of: DV Tool: w / sacks of cement Port Collar: w / sack of cement
Packer Type: Size: Inch Set at: Feet
Total Depth: Plug Back Depth: Plug Back Method:

Geological Date:

Table with 4 columns: Formation Name, Formation Top, Formation Base, Completion Information. Rows 1 and 2.

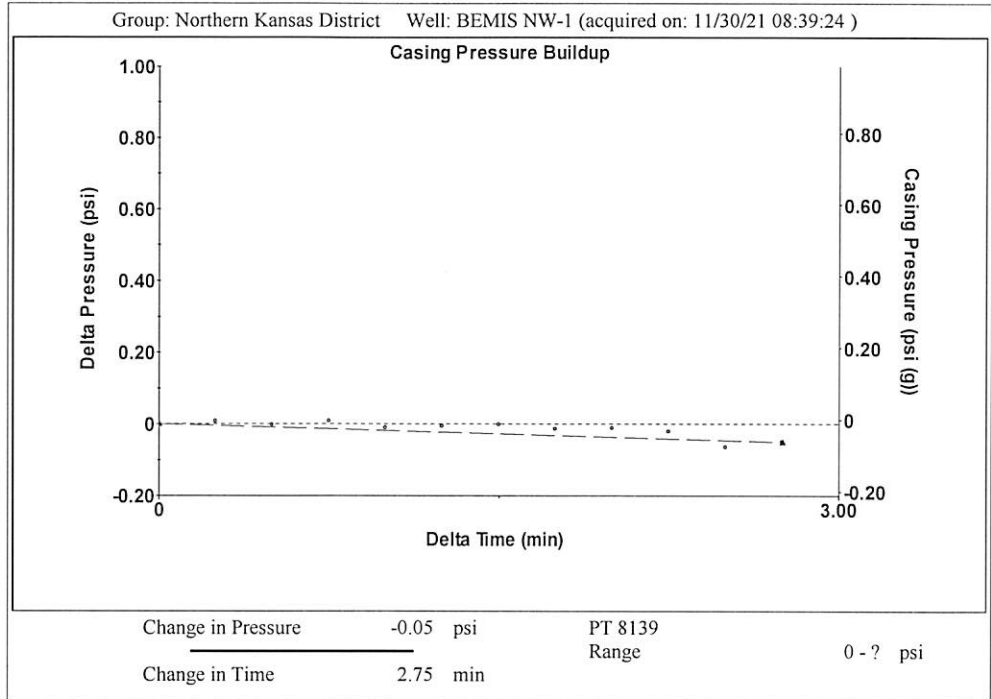
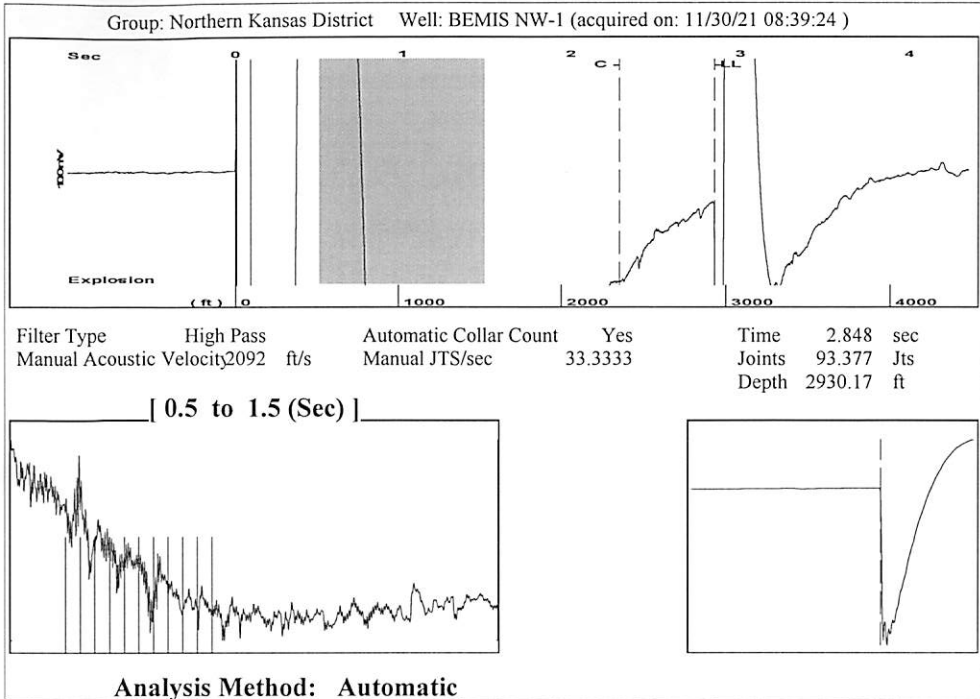
UNDER PENALTY OF PERJURY I HEREBY ATTEST THAT THE INFORMATION CONTAINED HEREIN IS TRUE AND CORRECT TO THE BEST OF MY KNOWLEDGE

Submitted Electronically

Do NOT Write in This Space - KCC USE ONLY
Date Tested: Results: Date Plugged: Date Repaired: Date Put Back in Service:
Review Completed by: Comments:
TA Approved: Yes Denied Date:

Mail to the Appropriate KCC Conservation Office:

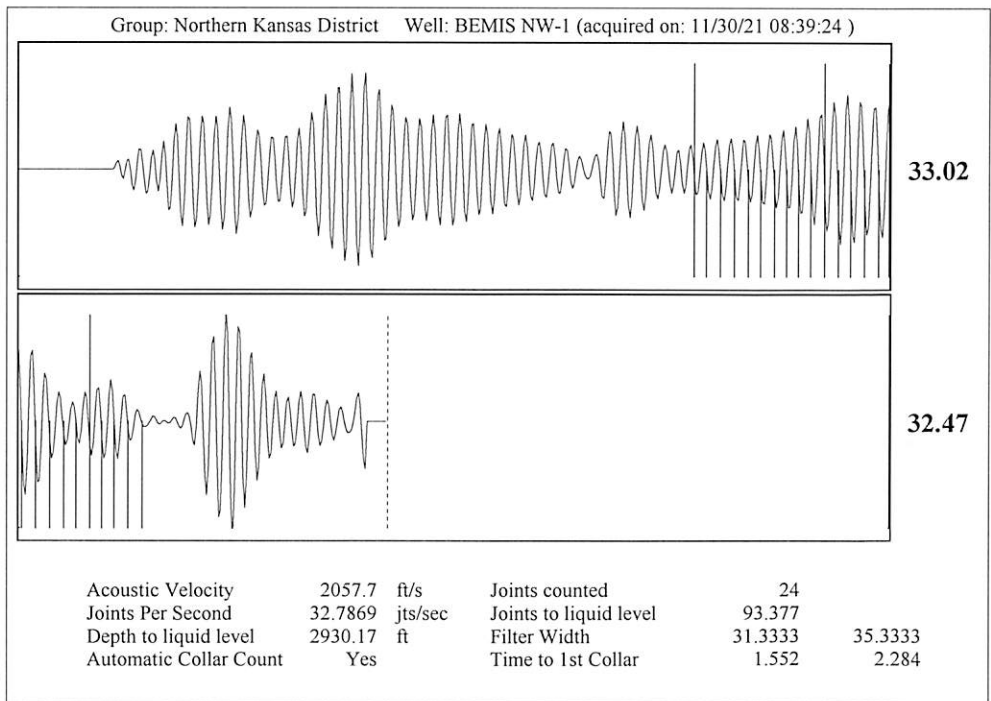
Table with 3 columns: District Office #, Address, Phone. Rows 1-4.



Group: Northern Kansas District Well: BEMIS NW-1 (acquired on: 11/30/21 08:39:24)

Production	Potential	Casing Pressure	Static
Current	- * - BBL/D	-0.0 psi (g)	
Oil 2	- * - BBL/D	Casing Pressure Buildup	Oil Column Height
Water 367.23	- * - Mscf/D	-0.051 psi	MD 3 ft
Gas - * -		2.75 min	
		Gas/Liquid Interface Pressure	Water Column Height
		0.8 psi (g)	MD 541 ft
IPR Method	Vogel		
PBHP/SBHP	- * -	Liquid Level Depth	
Production Efficiency	0.0	2930.17 ft	
		Pump Intake Depth	
Oil 40 deg.API		3514.00 ft	
Water 1.05 Sp.Gr.H2O		Formation Depth	
Gas 0.55 Sp.Gr.AIR		3474.00 ft	
Acoustic Velocity	2057.7 ft/s	Static BHP	
		247.7 psi (g)	

Acoustic Test



Conservation Division
District Office No. 4
2301 E. 13th Street
Hays, KS 67601-2651



Phone: 785-261-6250
Fax: 785-625-0564
<http://kcc.ks.gov/>

Andrew J. French, Chairperson
Dwight D. Keen, Commissioner
Susan K. Duffy, Commissioner

Laura Kelly, Governor

December 13, 2021

Jerry Wirtz
E & B Natural Resources Management Corp.
2501 280TH AVE
HAYS, KS 67601-9598

Re: Temporary Abandonment
API 15-051-25458-00-00
BEMIS NW 1
NW/4 Sec.28-11S-17W
Ellis County, Kansas

Dear Jerry Wirtz:

"Your temporary abandonment (TA) application for the well listed above has been approved. In accordance with K.A.R. 82-3-111 the TA status of this well will expire 12/13/2022.

- * If you return this well to service or plug it, please notify the District Office.
- * If you sell this well you are required to file a Transfer of Operator form, T-1.
- * If the well will remain temporarily abandoned, you must submit a new TA application, CP-111, before 12/13/2022.

You may contact me at the number above if you have questions.

Very truly yours,

RICHARD WILLIAMS"