

KANSAS CORPORATION COMMISSION
OIL & GAS CONSERVATION DIVISION

TEMPORARY ABANDONMENT WELL APPLICATION

OPERATOR: License#
Name:
Address 1:
Address 2:
City: State: Zip:
Contact Person:
Phone:
Contact Person Email:
Field Contact Person:
Field Contact Person Phone:

API No. 15-
Spot Description:
Sec. Twp. S. R.
GPS Location: Lat: Long:
Datum: NAD27 NAD83 WGS84
County: Elevation:
Lease Name: Well #:
Well Type: Oil Gas OG WSW Other:
SWD Permit #: ENHR Permit #:
Gas Storage Permit #:
Spud Date: Date Shut-In:

Table with 7 columns: Conductor, Surface, Production, Intermediate, Liner, Tubing. Rows include Size, Setting Depth, Amount of Cement, Top of Cement, Bottom of Cement.

Casing Fluid Level from Surface: How Determined? Date:
Casing Squeeze(s): to w / sacks of cement, to w / sacks of cement. Date:
Do you have a valid Oil & Gas Lease? Yes No
Depth and Type: Junk in Hole at Tools in Hole at Casing Leaks: Yes No Depth of casing leak(s):
Type Completion: ALT. I ALT. II Depth of: DV Tool: w / sacks of cement Port Collar: w / sack of cement
Packer Type: Size: Inch Set at: Feet
Total Depth: Plug Back Depth: Plug Back Method:

Geological Data:

Table with 4 columns: Formation Name, Formation Top, Formation Base, Completion Information. Rows 1 and 2.

UNDER PENALTY OF PERJURY I HEREBY ATTEST THAT THE INFORMATION CONTAINED HEREIN IS TRUE AND CORRECT TO THE BEST OF MY KNOWLEDGE

Submitted Electronically

Do NOT Write in This Space - KCC USE ONLY
Date Tested: Results: Date Plugged: Date Repaired: Date Put Back in Service:
Review Completed by: Comments:
TA Approved: Yes Denied Date:

Mail to the Appropriate KCC Conservation Office:

Table with 2 columns: Office Address, Phone. Rows for KCC District Office #1, #2, #3, #4.

General

Well ID 124949
 Well Brad 3508 4-12H
 Company Sandridge
 Operator - * -
 Lease Name Brad 3508 4-12H
 Elevation 1296.00 ft
 Production Method Other
 Dataset Description

Comment

Surface Unit

Manufacturer - * -
 Unit Class Conventional
 Unit API Number - * -
 Measured Stroke Length - * - in
 Rotation CW
 Counter Balance Effect (Weights Level) - * - Klb
 Weight Of Counter Weights 2000 lb

Prime Mover

Motor Type Electric
 Rated HP - * - HP
 Run Time 24 hr/day
 MFG/Comment - * -

Electric Motor Parameters

Rated Full Load AMPS - * -
 Rated Full Load RPM - * -
 Synchronous RPM 1200
 Voltage - * -
 Hertz 60
 Phase 3
 Power Consumption 5
 Power Demand 8 \$/KW

Tubulars

Tubing OD 2.875 in
 Casing OD 7.000 in
 Average Joint Length 31.700 ft
 Anchor Depth - * - ft
 Kelly Bushing 21.00 ft

Pump

Plunger Diameter - * - in
 Pump Intake Depth 5514.00 ft
 **Total Rod Length < Pump Depth

Polished Rod

Polished Rod Diameter - * - in

Rod String

	Top Taper	Taper 2	Taper 3	Taper 4	Taper 5	Taper 6
Rod Type	- * -	- * -	- * -	- * -	- * -	- * -
Rod Length	- * -	- * -	- * -	- * -	- * -	- * - ft
Rod Diameter	- * -	- * -	- * -	- * -	- * -	- * - in
Rod Weight	0.0	0.0	0.0	0.0	0.0	0.0 lb

Total Rod Length 0
 Total Rod Weight 0.00

Damp Up 0.05
 Damp Down 0.05

Conditions

Pressure

Static BHP 527.6 psi (g)
 Static BHP Method Acoustic
 Static BHP Date 10/09/2019

Producing BHP 1376.0 psi (g)
 Producing BHP Method Acoustic
 Producing BHP Date 11/11/2021
 Formation Depth 7661.00 ft

Surface Producing Pressures

Tubing Pressure 190.0 psi (g)
 Casing Pressure 215.6 psi (g)

Casing Pressure Buildup

Change in Pressure 0.1 psi
 Over Change in Time 1.00 min

Production

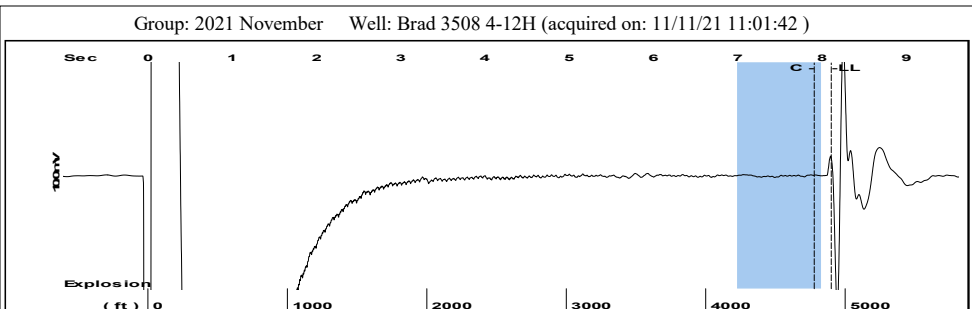
Oil Production 0 BBL/D
 Water Production 1 BBL/D
 Gas Production - * - Mscf/D
 Production Date 08/05/2017

Temperatures

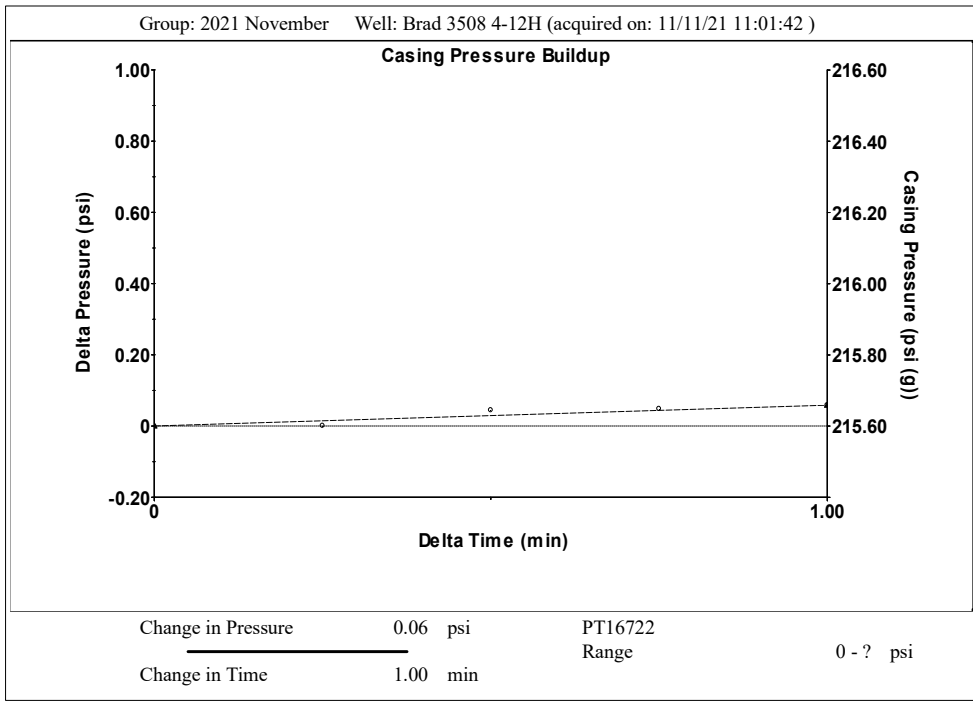
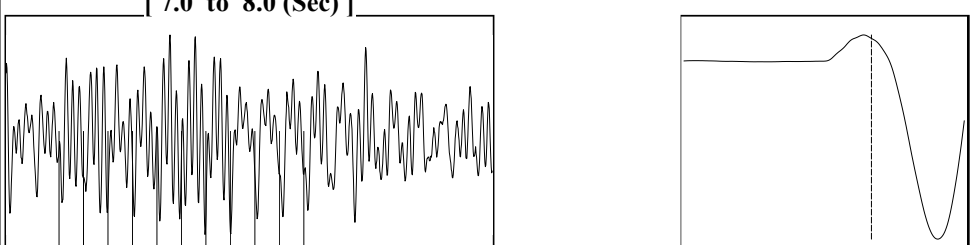
Surface Temperature 70 deg F
 Bottomhole Temperature 150 deg F

Fluid Properties

Oil API 40 deg.API
 Water Specific Gravity 1.05 Sp.Gr.H2O

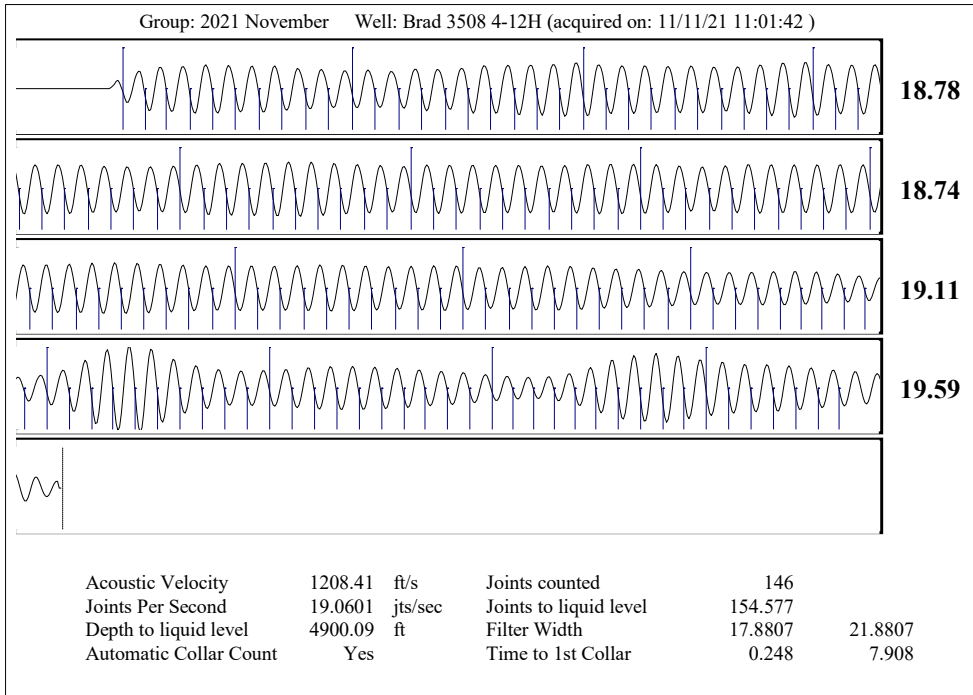


Filter Type High Pass Automatic Collar Count Yes Time 8.11 sec
 Manual Acoustic Veloc 1260.44 ft/s Manual JTS/sec 19.8807 Joints 154.577 Jts
 Depth 4900.09 ft



Group: 2021 November Well: Brad 3508 4-12H (acquired on: 11/11/21 11:01:42)

Production	Potential	Casing Pressure		Producing
Current	- * - BBL/D	215.6 psi (g)		Annular
Oil 0	- * - BBL/D	Casing Pressure Buildup		Gas Flow
Water 1	- * - Mscf/D	0.1 psi		6 Mscf/D
Gas - * -		1.00 min		% Liquid
		Gas/Liquid Interface Pressure		88 %
IPR Method	Vogel	247.8 psi (g)		
PBHP/SBHP	- * -	Liquid Level Depth		
Production Efficiency	0.0	4900.09 ft		
		Tubing Intake Depth		
Oil 40 deg.API		5514.00 ft		
Water 1.05 Sp.Gr.H2O		Formation Depth		
Gas 0.75 Sp.Gr.AIR		7661.00 ft		
Acoustic Velocity	1208.41 ft/s			
Formation Submergence		493.7 psi (g)		
Total Gaseous Liquid Column HT (TVD)	614 ft	Producing BHP		
Equivalent Gas Free Liquid HT (TVD)	541 ft	1376.0 psi (g)		
Static BHP		527.6 psi (g)		
first shot				



Conservation Division
District Office No. 2
3450 N. Rock Road
Building 600, Suite 601
Wichita, KS 67226



Phone: 316-337-7400
Fax: 316-630-4005
<http://kcc.ks.gov/>

Andrew J. French, Chairperson
Dwight D. Keen, Commissioner
Susan K. Duffy, Commissioner

Laura Kelly, Governor

December 14, 2021

Collette Davis
SandRidge Exploration and Production LLC
1 E SHERIDAN AVE STE 500
OKLAHOMA CITY, OK 73104-2494

Re: Temporary Abandonment
API 15-077-21923-01-00
BRAD 3508 4-12H
NE/4 Sec.12-35S-08W
Harper County, Kansas

Dear Collette Davis:

"Your temporary abandonment (TA) application for the well listed above has been approved. In accordance with K.A.R. 82-3-111 the TA status of this well will expire 12/14/2022.

- * If you return this well to service or plug it, please notify the District Office.
- * If you sell this well you are required to file a Transfer of Operator form, T-1.
- * If the well will remain temporarily abandoned, you must submit a new TA application, CP-111, before 12/14/2022.

You may contact me at the number above if you have questions.

Very truly yours,

Jeff Klock, District Supervisor"