

KANSAS CORPORATION COMMISSION
OIL & GAS CONSERVATION DIVISION

TEMPORARY ABANDONMENT WELL APPLICATION

OPERATOR: License#
Name:
Address 1:
Address 2:
City: State: Zip:
Contact Person:
Phone:
Contact Person Email:
Field Contact Person:
Field Contact Person Phone:

API No. 15-
Spot Description:
Sec. Twp. S. R.
feet from N / S Line of Section
feet from E / W Line of Section
GPS Location: Lat: , Long:
Datum: NAD27 NAD83 WGS84
County: Elevation: GL KB
Lease Name: Well #:
Well Type: (check one) Oil Gas OG WSW Other:
SWD Permit #: ENHR Permit #:
Gas Storage Permit #:
Spud Date: Date Shut-In:

Table with 7 columns: Conductor, Surface, Production, Intermediate, Liner, Tubing. Rows include Size, Setting Depth, Amount of Cement, Top of Cement, Bottom of Cement.

Casing Fluid Level from Surface: How Determined? Date:
Casing Squeeze(s): to w / sacks of cement, to w / sacks of cement. Date:
Do you have a valid Oil & Gas Lease? Yes No
Depth and Type: Junk in Hole at Tools in Hole at Casing Leaks: Yes No Depth of casing leak(s):
Type Completion: ALT. I ALT. II Depth of: DV Tool: w / sacks of cement Port Collar: w / sack of cement
Packer Type: Size: Inch Set at: Feet
Total Depth: Plug Back Depth: Plug Back Method:

Geological Date:

Table with 4 columns: Formation Name, Formation Top, Formation Base, Completion Information. Rows 1 and 2.

UNDER PENALTY OF PERJURY I HEREBY ATTEST THAT THE INFORMATION CONTAINED HEREIN IS TRUE AND CORRECT TO THE BEST OF MY KNOWLEDGE

Submitted Electronically

Do NOT Write in This Space - KCC USE ONLY
Date Tested: Results: Date Plugged: Date Repaired: Date Put Back in Service:
Review Completed by: Comments:
TA Approved: Yes Denied Date:

Mail to the Appropriate KCC Conservation Office:

Table with 3 columns: District Office, Address, Phone. Rows for District Office #1, #2, #3, #4.

General

Well ID 124948
Well Brad 3508 3-12H
Company Sandridge
Operator - * -
Lease Name Brad 3508 4-12H
Elevation 1296.00 ft
Production Method Other
Dataset Description

Comment

Surface Unit

Manufacturer - * -
Unit Class Conventional
Unit API Number - * -
Measured Stroke Length - * - in
Rotation CW
Counter Balance Effect (Weights Level) - * - Klb
Weight Of Counter Weights 2000 lb

Prime Mover

Motor Type Electric
Rated HP - * - HP
Run Time 24 hr/day
MFG/Comment - * -

Electric Motor Parameters

Rated Full Load AMPS - * -
Rated Full Load RPM - * -
Synchronous RPM 1200
Voltage - * -
Hertz 60
Phase 3
Power Consumption 5
Power Demand 8 \$/KW

Tubulars

Tubing OD 2.875 in
Casing OD 7.000 in
Average Joint Length 31.700 ft
Anchor Depth - * - ft
Kelly Bushing 21.00 ft

Pump

Plunger Diameter - * - in
Pump Intake Depth 5514.00 ft
**Total Rod Length < Pump Depth

Polished Rod

Polished Rod Diameter - * - in

Rod String

	Top Taper	Taper 2	Taper 3	Taper 4	Taper 5	Taper 6
Rod Type	- * -	- * -	- * -	- * -	- * -	- * -
Rod Length	- * -	- * -	- * -	- * -	- * -	- * - ft
Rod Diameter	- * -	- * -	- * -	- * -	- * -	- * - in
Rod Weight	0.0	0.0	0.0	0.0	0.0	0.0 lb

Total Rod Length 0
Total Rod Weight 0.00

Damp Up 0.05
Damp Down 0.05

Conditions

Pressure

Static BHP 1697.8 psi (g)
Static BHP Method Acoustic
Static BHP Date 10/09/2019

Producing BHP 1336.0 psi (g)
Producing BHP Method Acoustic
Producing BHP Date 11/11/2021
Formation Depth 7661.00 ft

Surface Producing Pressures

Tubing Pressure 190.0 psi (g)
Casing Pressure 15.8 psi (g)

Casing Pressure Buildup

Change in Pressure 0.2 psi
Over Change in Time 1.00 min

Production

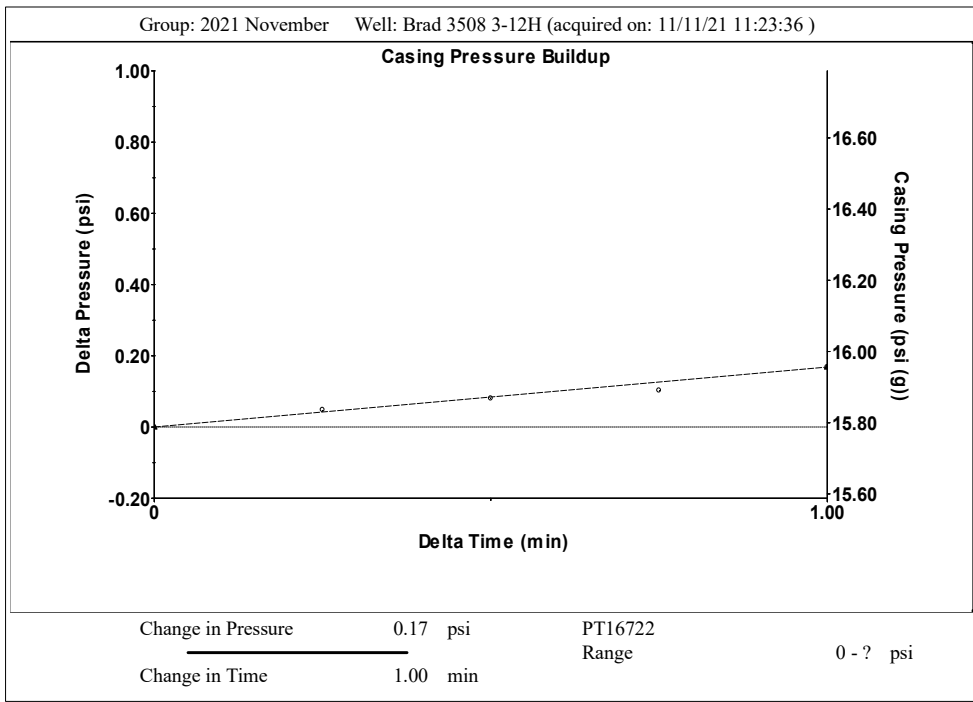
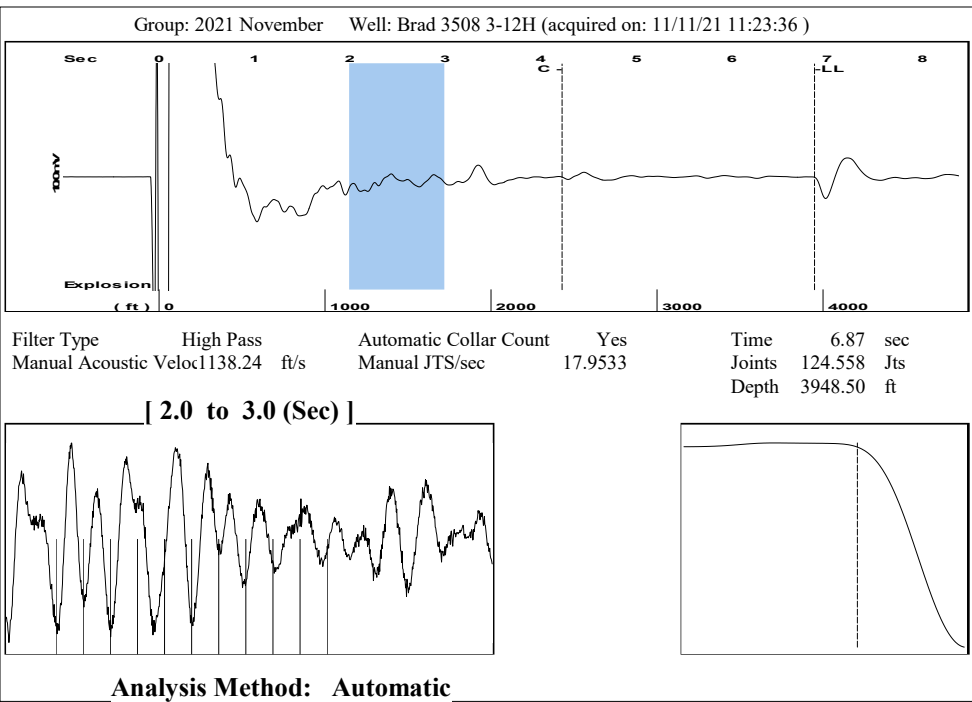
Oil Production 0 BBL/D
Water Production 1 BBL/D
Gas Production - * - Mscf/D
Production Date 08/05/2017

Temperatures

Surface Temperature 70 deg F
Bottomhole Temperature 150 deg F

Fluid Properties

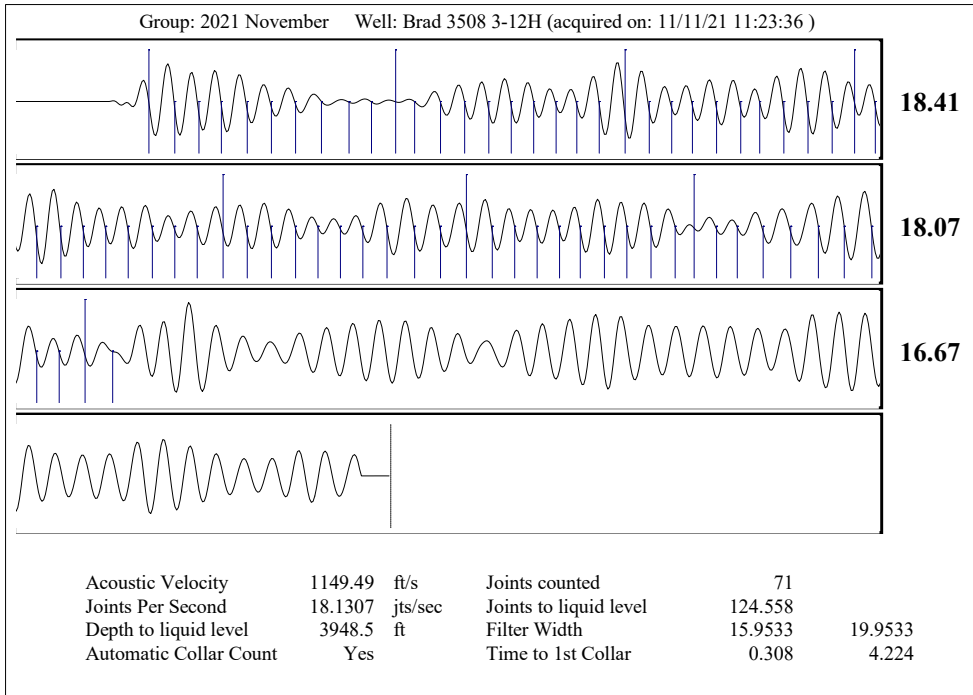
Oil API 40 deg.API
Water Specific Gravity 1.05 Sp.Gr.H2O



Group: 2021 November Well: Brad 3508 3-12H (acquired on: 11/11/21 11:23:36)

Production		Potential		Casing Pressure			Static	
Oil	0	- *	BBL/D	Casing Pressure	15.8 psi (g)		Oil Column Height	MD 0 ft
Water	1	- *	BBL/D	Casing Pressure Buildup	0.2 psi		Water Column Height	MD 3692 ft
Gas	- *	- *	Mscf/D	Gas/Liquid Interface Pressure	19.4 psi (g)		Liquid Level Depth	3948.50 ft
IPR Method		Vogel		Tubing Intake Depth		Static BHP		
PBHP/SBHP		- *		5514.00 ft		1697.8 psi (g)		
Production Efficiency		0.0		Formation Depth				
				7661.00 ft				
Oil	40 deg.API							
Water	1.05 Sp.Gr.H2O							
Gas	0.83 Sp.Gr.AIR							
Acoustic Velocity	1149.49 ft/s							

first shot



Conservation Division
District Office No. 2
3450 N. Rock Road
Building 600, Suite 601
Wichita, KS 67226



Phone: 316-337-7400
Fax: 316-630-4005
<http://kcc.ks.gov/>

Andrew J. French, Chairperson
Dwight D. Keen, Commissioner
Susan K. Duffy, Commissioner

Laura Kelly, Governor

December 14, 2021

Collette Davis
SandRidge Exploration and Production LLC
1 E SHERIDAN AVE STE 500
OKLAHOMA CITY, OK 73104-2494

Re: Temporary Abandonment
API 15-077-21922-01-00
BRAD 3508 3-12H
NE/4 Sec.12-35S-08W
Harper County, Kansas

Dear Collette Davis:

"Your temporary abandonment (TA) application for the well listed above has been approved. In accordance with K.A.R. 82-3-111 the TA status of this well will expire 12/14/2022.

- * If you return this well to service or plug it, please notify the District Office.
- * If you sell this well you are required to file a Transfer of Operator form, T-1.
- * If the well will remain temporarily abandoned, you must submit a new TA application, CP-111, before 12/14/2022.

You may contact me at the number above if you have questions.

Very truly yours,

Jeff Klock, District Supervisor"