

KANSAS CORPORATION COMMISSION
OIL & GAS CONSERVATION DIVISION

TEMPORARY ABANDONMENT WELL APPLICATION

OPERATOR: License# _____
Name: _____
Address 1: _____
Address 2: _____
City: _____ State: _____ Zip: _____ + _____
Contact Person: _____
Phone:(_____) _____
Contact Person Email: _____
Field Contact Person: _____
Field Contact Person Phone: (_____) _____

API No. 15- _____
Spot Description: _____
- - - - - Sec. _____ Twp. _____ S. R. _____ E W
_____ feet from N / S Line of Section
_____ feet from E / W Line of Section
GPS Location: Lat: _____, Long: _____
Datum: NAD27 NAD83 WGS84
County: _____ Elevation: _____ GL KB
Lease Name: _____ Well #: _____
Well Type: (check one) Oil Gas OG WSW Other: _____
 SWD Permit #: _____ ENHR Permit #: _____
 Gas Storage Permit #: _____
Spud Date: _____ Date Shut-In: _____

Table with 7 columns: Conductor, Surface, Production, Intermediate, Liner, Tubing. Rows include Size, Setting Depth, Amount of Cement, Top of Cement, Bottom of Cement.

Casing Fluid Level from Surface: _____ How Determined? _____ Date: _____
Casing Squeeze(s): _____ to _____ w / _____ sacks of cement, _____ to _____ w / _____ sacks of cement. Date: _____
Do you have a valid Oil & Gas Lease? Yes No
Depth and Type: Junk in Hole at _____ (depth) Tools in Hole at _____ (depth) Casing Leaks: Yes No Depth of casing leak(s): _____
Type Completion: ALT. I ALT. II Depth of: DV Tool: _____ w / _____ sacks of cement Port Collar: _____ w / _____ sack of cement
Packer Type: _____ Size: _____ Inch Set at: _____ Feet
Total Depth: _____ Plug Back Depth: _____ Plug Back Method: _____

Geological Date:

Table with 2 columns: Formation Name, Completion Information. Rows 1 and 2 for formation details.

UNDER PENALTY OF PERJURY I HEREBY ATTEST THAT THE INFORMATION CONTAINED HEREIN IS TRUE AND CORRECT TO THE BEST OF MY KNOWLEDGE

Submitted Electronically

Do NOT Write in This Space - KCC USE ONLY
Date Tested: _____ Results: _____ Date Plugged: _____ Date Repaired: _____ Date Put Back in Service: _____
Review Completed by: _____ Comments: _____
TA Approved: Yes Denied Date: _____

Mail to the Appropriate KCC Conservation Office:

Table with 2 columns: Office Address, Phone. Rows for KCC District Office #1, #2, #3, and #4.

General

Well ID 125992
Well Bryant 3508 2-10H
Company Sandridge
Operator - * -
Lease Name Bryant 3508 2-10H
Elevation 1286.00 ft
Production Method Other
Dataset Description

Comment

Surface Unit

Manufacturer - * -
Unit Class Conventional
Unit API Number - * -
Measured Stroke Length 100.000 in
Rotation CW
Counter Balance Effect (Weights Level) - * - Klb
Weight Of Counter Weights 2000 lb

Prime Mover

Motor Type Electric
Rated HP - * - HP
Run Time 24 hr/day
MFG/Comment - * -

Electric Motor Parameters

Rated Full Load AMPS - * -
Rated Full Load RPM - * -
Synchronous RPM 1200
Voltage - * -
Hertz 60
Phase 3
Power Consumption 5
Power Demand 8 \$/KW

Tubulars

Tubing OD 2.875 in
Casing OD 7.000 in
Average Joint Length 31.700 ft
Anchor Depth - * - ft
Kelly Bushing 16.00 ft

Pump

Plunger Diameter - * - in
Pump Intake Depth 5393.00 ft
**Total Rod Length < Pump Depth

Polished Rod

Polished Rod Diameter - * - in

Rod String

	Top Taper	Taper 2	Taper 3	Taper 4	Taper 5	Taper 6
Rod Type	- * -	- * -	- * -	- * -	- * -	- * -
Rod Length	- * -	- * -	- * -	- * -	- * -	- * - ft
Rod Diameter	- * -	- * -	- * -	- * -	- * -	- * - in
Rod Weight	0.0	0.0	0.0	0.0	0.0	0.0 lb

Total Rod Length 0
Total Rod Weight 0.00

Damp Up 0.05
Damp Down 0.05

Conditions

Pressure

Static BHP 1261.5 psi (g)
Static BHP Method Acoustic
Static BHP Date 10/09/2019

Producing BHP 745.9 psi (g)
Producing BHP Method Acoustic
Producing BHP Date 11/11/2021
Formation Depth 7500.00 ft

Surface Producing Pressures

Tubing Pressure - * - psi (g)
Casing Pressure 269.6 psi (g)

Casing Pressure Buildup

Change in Pressure 0.6 psi
Over Change in Time 1.50 min

Production

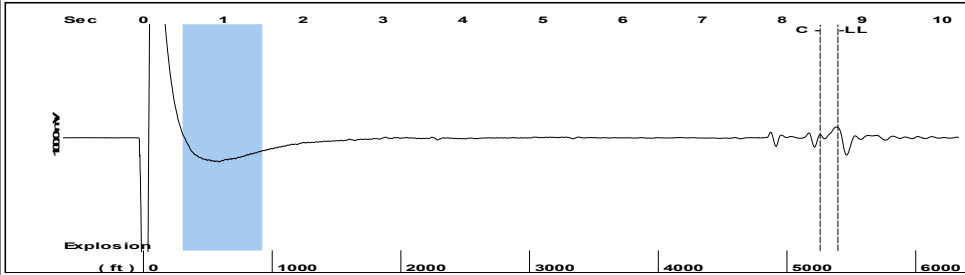
Oil Production 0 BBL/D
Water Production 1 BBL/D
Gas Production - * - Mscf/D
Production Date 10/08/2019

Temperatures

Surface Temperature 70 deg F
Bottomhole Temperature 150 deg F

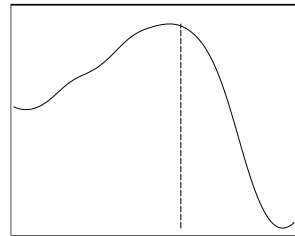
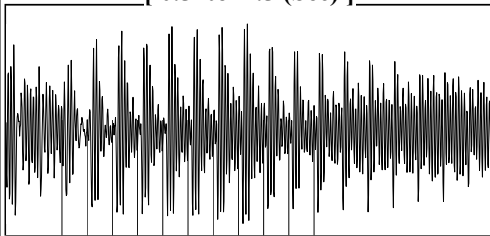
Fluid Properties

Oil API 40 deg.API
Water Specific Gravity 1.05 Sp.Gr.H2O

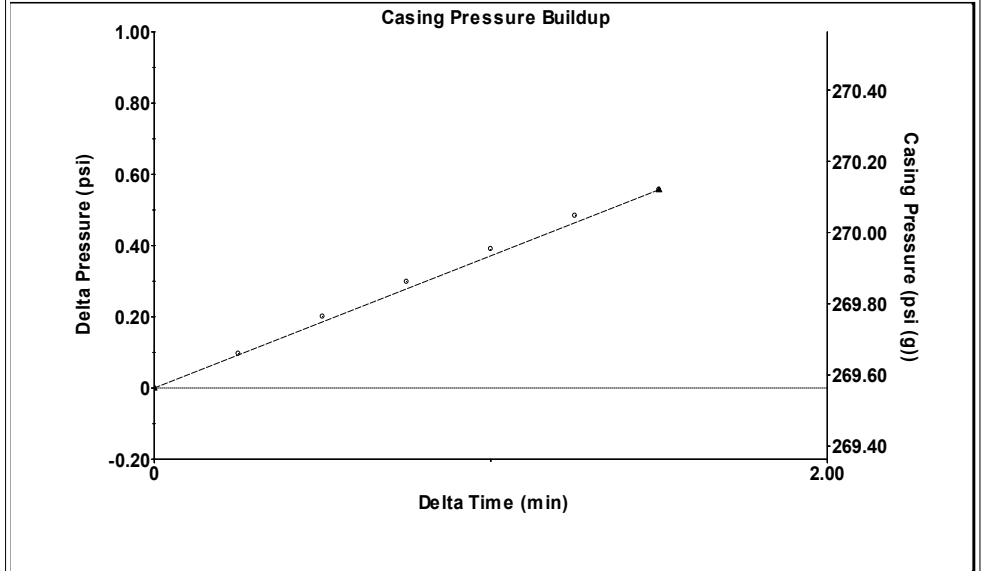


Filter Type High Pass Automatic Collar Count Yes Time 8.698 sec
 Manual Acoustic Veloc 1223.94 ft/s Manual JTS/sec 19.305 Joints 170.197 Jts
 Depth 5395.23 ft

[0.5 to 1.5 (Sec)]

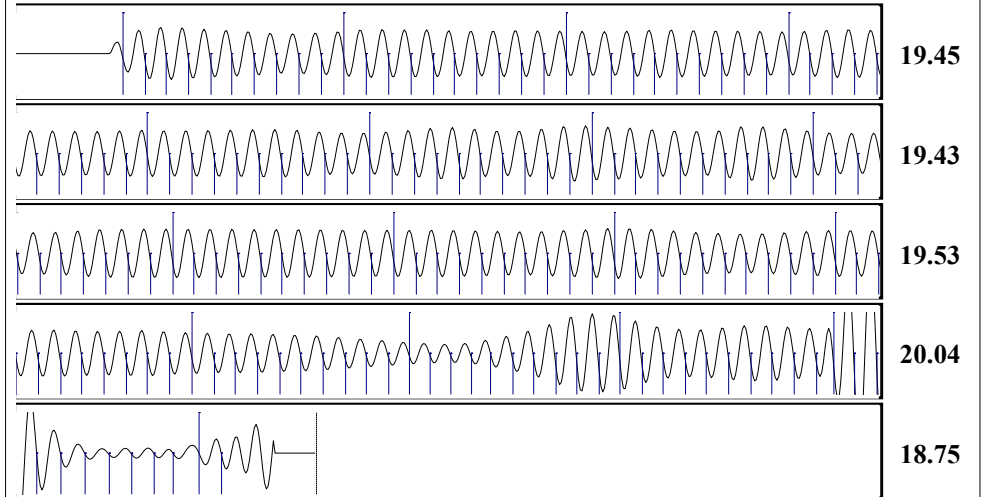


Analysis Method: Automatic



Change in Pressure 0.56 psi PT16722
 Change in Time 1.50 min Range 0 - ? psi

Production	Potential	Casing Pressure	
Current		269.6 psi (g)	
Oil 0	- * - BBL/D	Casing Pressure Buildup	
Water 1	- * - BBL/D	0.6 psi	
Gas - * -	- * - Mscf/D	1.50 min	
IPR Method	Vogel	Gas/Liquid Interface Pressure	
PBHP/SBHP	- * -	311.8 psi (g)	
Production Efficiency	0.0	Liquid Level Depth	
Oil 40 deg.API		5395.23 ft	
Water 1.05 Sp.Gr.H2O		Tubing Intake Depth	
Gas 0.72 Sp.Gr.AIR		5393.00 ft	
Acoustic Velocity	1240.57 ft/s	Formation Depth	
		7500.00 ft	
first shot		Oil Column Height	
		MD 0 ft	
		Water Column Height	
		MD 2089 ft	
		Static BHP	
		1261.5 psi (g)	



Acoustic Velocity 1240.57 ft/s Joints counted 161
 Joints Per Second 19.5673 jts/sec Joints to liquid level 170.197
 Depth to liquid level 5395.23 ft Filter Width 17.305 21.305
 Automatic Collar Count Yes Time to 1st Collar 0.248 8.476

Conservation Division
District Office No. 2
3450 N. Rock Road
Building 600, Suite 601
Wichita, KS 67226



Phone: 316-337-7400
Fax: 316-630-4005
<http://kcc.ks.gov/>

Andrew J. French, Chairperson
Dwight D. Keen, Commissioner
Susan K. Duffy, Commissioner

Laura Kelly, Governor

December 14, 2021

Collette Davis
SandRidge Exploration and Production LLC
1 E SHERIDAN AVE STE 500
OKLAHOMA CITY, OK 73104-2494

Re: Temporary Abandonment
API 15-077-21962-01-00
BRYANT 3508 4-10H
NE/4 Sec.10-35S-08W
Harper County, Kansas

Dear Collette Davis:

"Your temporary abandonment (TA) application for the well listed above has been approved. In accordance with K.A.R. 82-3-111 the TA status of this well will expire 12/14/2022.

- * If you return this well to service or plug it, please notify the District Office.
- * If you sell this well you are required to file a Transfer of Operator form, T-1.
- * If the well will remain temporarily abandoned, you must submit a new TA application, CP-111, before 12/14/2022.

You may contact me at the number above if you have questions.

Very truly yours,

Jeff Klock, District Supervisor"