

KANSAS CORPORATION COMMISSION  
OIL & GAS CONSERVATION DIVISION

TEMPORARY ABANDONMENT WELL APPLICATION

OPERATOR: License# \_\_\_\_\_  
 Name: \_\_\_\_\_  
 Address 1: \_\_\_\_\_  
 Address 2: \_\_\_\_\_  
 City: \_\_\_\_\_ State: \_\_\_\_\_ Zip: \_\_\_\_\_ + \_\_\_\_\_  
 Contact Person: \_\_\_\_\_  
 Phone: ( \_\_\_\_\_ ) \_\_\_\_\_  
 Contact Person Email: \_\_\_\_\_  
 Field Contact Person: \_\_\_\_\_  
 Field Contact Person Phone: ( \_\_\_\_\_ ) \_\_\_\_\_

API No. 15- \_\_\_\_\_  
 Spot Description: \_\_\_\_\_  
 \_\_\_\_\_ - \_\_\_\_\_ - \_\_\_\_\_ - \_\_\_\_\_ Sec. \_\_\_\_\_ Twp. \_\_\_\_\_ S. R. \_\_\_\_\_  E  W  
 \_\_\_\_\_ feet from  N /  S Line of Section  
 \_\_\_\_\_ feet from  E /  W Line of Section  
 GPS Location: Lat: \_\_\_\_\_, Long: \_\_\_\_\_  
(e.g. xx.xxxxx) (e.g. -xxx.xxxxx)  
 Datum:  NAD27  NAD83  WGS84  
 County: \_\_\_\_\_ Elevation: \_\_\_\_\_  GL  KB  
 Lease Name: \_\_\_\_\_ Well #: \_\_\_\_\_  
 Well Type: (check one)  Oil  Gas  OG  WSW  Other: \_\_\_\_\_  
 SWD Permit #: \_\_\_\_\_  ENHR Permit #: \_\_\_\_\_  
 Gas Storage Permit #: \_\_\_\_\_  
 Spud Date: \_\_\_\_\_ Date Shut-In: \_\_\_\_\_

	Conductor	Surface	Production	Intermediate	Liner	Tubing
Size						
Setting Depth						
Amount of Cement						
Top of Cement						
Bottom of Cement						

Casing Fluid Level from Surface: \_\_\_\_\_ How Determined? \_\_\_\_\_ Date: \_\_\_\_\_  
 Casing Squeeze(s): \_\_\_\_\_ to \_\_\_\_\_ w / \_\_\_\_\_ sacks of cement, \_\_\_\_\_ to \_\_\_\_\_ w / \_\_\_\_\_ sacks of cement. Date: \_\_\_\_\_  
(top) (bottom) (top) (bottom)  
 Do you have a valid Oil & Gas Lease?  Yes  No  
 Depth and Type:  Junk in Hole at \_\_\_\_\_  Tools in Hole at \_\_\_\_\_ Casing Leaks:  Yes  No Depth of casing leak(s): \_\_\_\_\_  
(depth) (depth)  
 Type Completion:  ALT. I  ALT. II Depth of:  DV Tool: \_\_\_\_\_ w / \_\_\_\_\_ sacks of cement  Port Collar: \_\_\_\_\_ w / \_\_\_\_\_ sack of cement  
(depth) (depth)  
 Packer Type: \_\_\_\_\_ Size: \_\_\_\_\_ Inch Set at: \_\_\_\_\_ Feet  
 Total Depth: \_\_\_\_\_ Plug Back Depth: \_\_\_\_\_ Plug Back Method: \_\_\_\_\_

**Geological Data:**

Formation Name	Formation Top	Formation Base	Completion Information
1. _____	At: _____	to _____ Feet	Perforation Interval _____ to _____ Feet or Open Hole Interval _____ to _____ Feet
2. _____	At: _____	to _____ Feet	Perforation Interval _____ to _____ Feet or Open Hole Interval _____ to _____ Feet

UNDER PENALTY OF PERJURY I HEREBY ATTEST THAT THE INFORMATION CONTAINED HEREIN IS TRUE AND CORRECT TO THE BEST OF MY KNOWLEDGE

Submitted Electronically

<b>Do NOT Write in This Space - KCC USE ONLY</b>	Date Tested: _____	Results: _____	Date Plugged: _____	Date Repaired: _____	Date Put Back in Service: _____
	Review Completed by: _____ Comments: _____				
TA Approved: <input type="checkbox"/> Yes <input type="checkbox"/> Denied Date: _____					

Mail to the Appropriate KCC Conservation Office:

	KCC District Office #1 - 210 E. Frontview, Suite A, Dodge City, KS 67801	Phone 620.682.7933
	KCC District Office #2 - 3450 N. Rock Road, Building 600, Suite 601, Wichita, KS 67226	Phone 316.337.7400
	KCC District Office #3 - 137 E. 21st St., Chanute, KS 66720	Phone 620.902.6450
	KCC District Office #4 - 2301 E. 13th Street, Hays, KS 67601-2651	Phone 785.261.6250

### General

Well ID 127591  
 Well Randy 3508 2-3H  
 Company Sandridge  
 Operator - \* -  
 Lease Name Randy 3508 2-3H  
 Elevation 1261.00 ft  
 Production Method Other  
 Dataset Description

Comment

### Surface Unit

Manufacturer - \* -  
 Unit Class Conventional  
 Unit API Number - \* -  
 Measured Stroke Length - \* - in  
 Rotation CW  
 Counter Balance Effect (Weights Level) - \* - Klb  
 Weight Of Counter Weights 2000 lb

### Prime Mover

Motor Type Electric  
 Rated HP - \* - HP  
 Run Time 24 hr/day  
 MFG/Comment - \* -

### Electric Motor Parameters

Rated Full Load AMPS - \* -  
 Rated Full Load RPM - \* -  
 Synchronous RPM 1200  
 Voltage - \* -  
 Hertz 60  
 Phase 3  
 Power Consumption 5  
 Power Demand 8 \$/KW

### Tubulars

Tubing OD - \* - in  
 Casing OD 7.000 in  
 Average Joint Length 31.700 ft  
 Anchor Depth - \* - ft  
 Kelly Bushing 23.00 ft

### Pump

Plunger Diameter - \* - in  
 Pump Intake Depth - \* - ft  
 \*\*Total Rod Length > Pump Depth

### Polished Rod

Polished Rod Diameter - \* - in

### Rod String

	Top Taper	Taper 2	Taper 3	Taper 4	Taper 5	Taper 6	
Rod Type	- * -	- * -	- * -	- * -	- * -	- * -	- * -
Rod Length	- * -	- * -	- * -	- * -	- * -	- * -	ft
Rod Diameter	- * -	- * -	- * -	- * -	- * -	- * -	in
Rod Weight	0.0	0.0	0.0	0.0	0.0	0.0	lb

Total Rod Length 0  
 Total Rod Weight 0.00

Damp Up 0.05  
 Damp Down 0.05

### Conditions

#### Pressure

Static BHP 1180.2 psi (g)  
 Static BHP Method Acoustic  
 Static BHP Date 06/06/2019

Producing BHP 1190.5 psi (g)  
 Producing BHP Method Acoustic  
 Producing BHP Date 11/11/2021  
 Formation Depth 7334.00 ft

#### Surface Producing Pressures

Tubing Pressure - \* - psi (g)  
 Casing Pressure 240.8 psi (g)

#### Casing Pressure Buildup

Change in Pressure -0.297 psi  
 Over Change in Time 1.50 min

#### Production

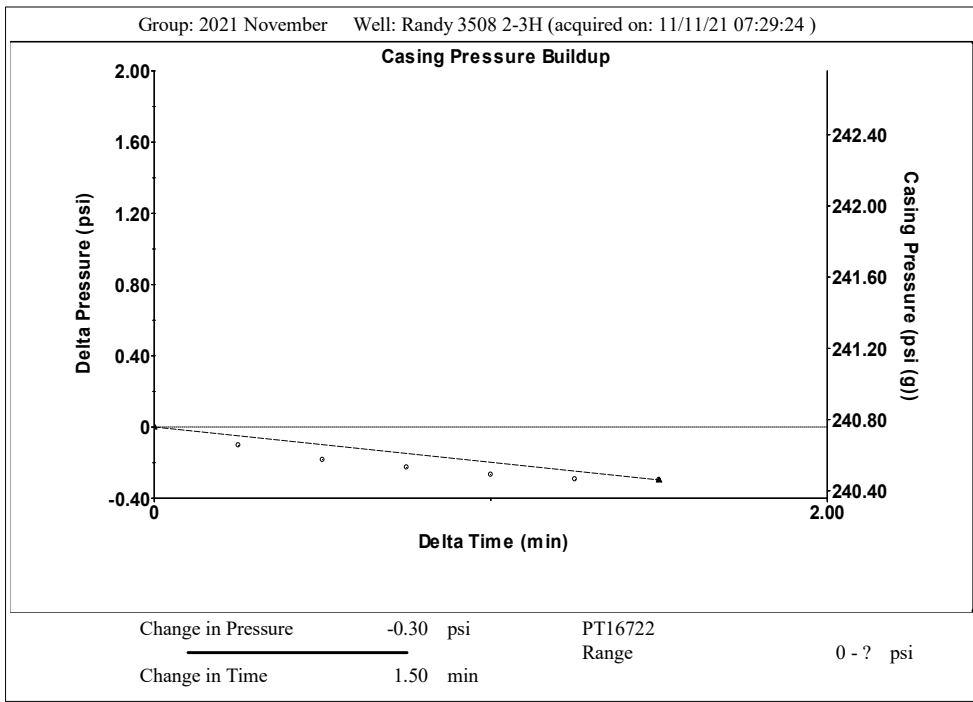
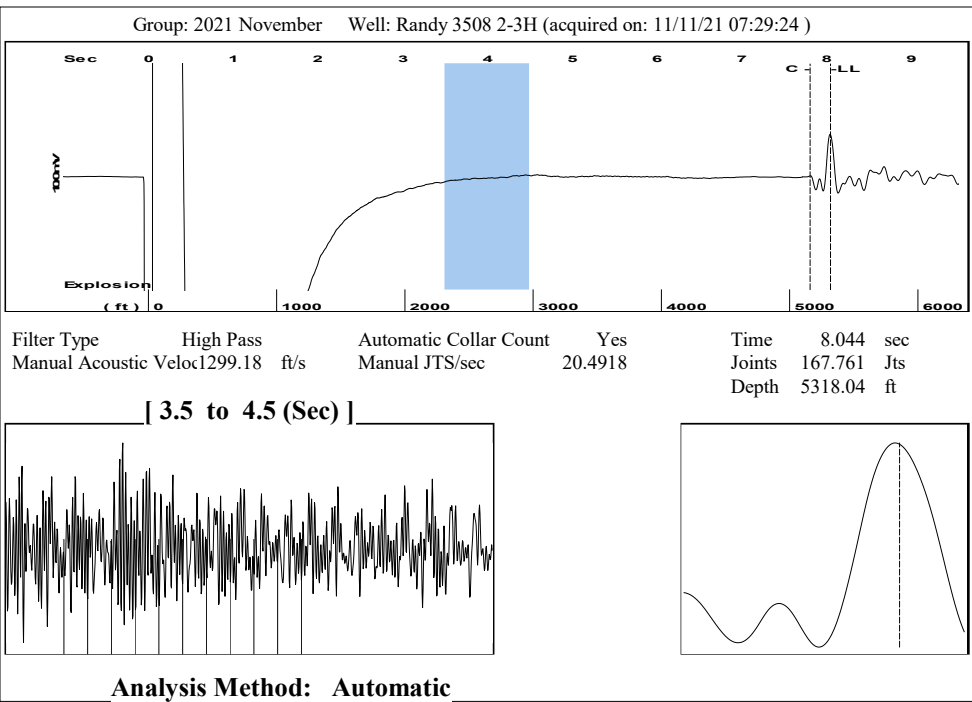
Oil Production 0 BBL/D  
 Water Production 1 BBL/D  
 Gas Production - \* - Mscf/D  
 Production Date 06/05/2019

#### Temperatures

Surface Temperature 70 deg F  
 Bottomhole Temperature 150 deg F

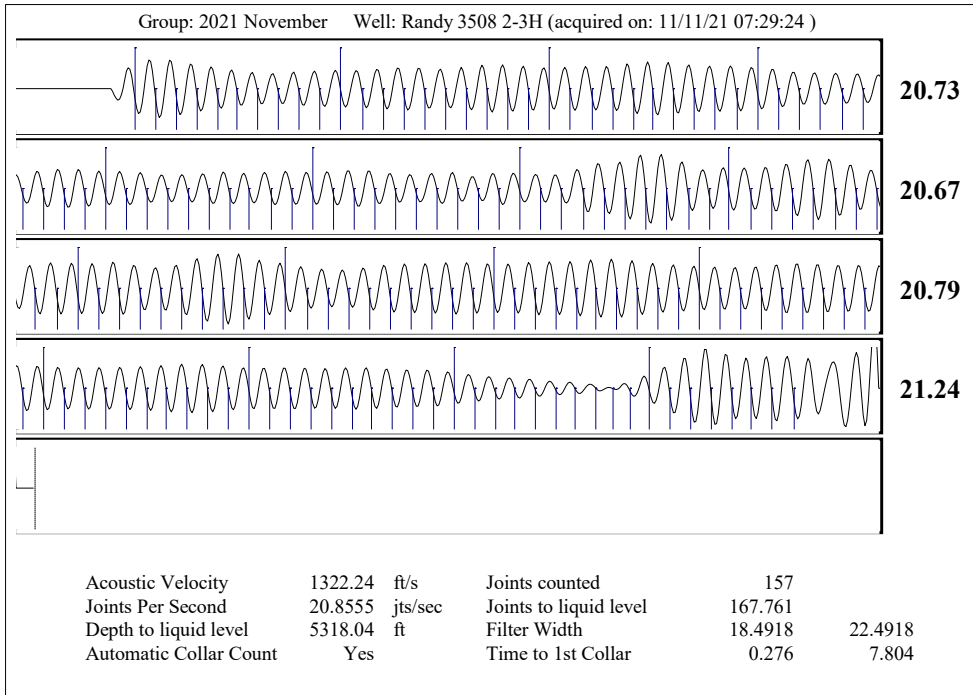
#### Fluid Properties

Oil API 40 deg.API  
 Water Specific Gravity 1.05 Sp.Gr.H2O



Group: 2021 November Well: Randy 3508 2-3H (acquired on: 11/11/21 07:29:24)

<b>Production</b>	<b>Potential</b>	<b>Casing Pressure</b>		<b>Static</b>
Current		240.8 psi (g)		<b>Oil Column Height</b>
Oil 0	- * - BBL/D	<b>Casing Pressure Buildup</b>		MD 0 ft
Water 1	- * - BBL/D	-0.297 psi		<b>Water Column Height</b>
Gas - * -	- * - Mscf/D	1.50 min		MD - * - ft
<b>IPR Method</b>	<b>Vogel</b>	<b>Gas/Liquid Interface Pressure</b>		<b>Tubing Intake Depth</b>
PBHP/SBHP	- * -	274.1 psi (g)		- * - ft
<b>Production Efficiency</b>	<b>0.0</b>	<b>Liquid Level Depth</b>		<b>Formation Depth</b>
Oil 40 deg.API		5318.04 ft		7334.00 ft
Water 1.05 Sp.Gr.H2O				
Gas 0.66 Sp.Gr.AIR				
<b>Acoustic Velocity</b>	<b>1322.24 ft/s</b>	<b>Static BHP</b>	1180.2 psi (g)	
<b>First shot</b>				



Conservation Division  
District Office No. 2  
3450 N. Rock Road  
Building 600, Suite 601  
Wichita, KS 67226



Phone: 316-337-7400  
Fax: 316-630-4005  
<http://kcc.ks.gov/>

Andrew J. French, Chairperson  
Dwight D. Keen, Commissioner  
Susan K. Duffy, Commissioner

Laura Kelly, Governor

December 15, 2021

Collette Davis  
SandRidge Exploration and Production LLC  
1 E SHERIDAN AVE STE 500  
OKLAHOMA CITY, OK 73104-2494

Re: Temporary Abandonment  
API 15-077-22085-02-00  
RANDY 3508 2-3H 1L  
SW/4 Sec.34-34S-08W  
Harper County, Kansas

Dear Collette Davis:

"Your temporary abandonment (TA) application for the well listed above has been approved. In accordance with K.A.R. 82-3-111 the TA status of this well will expire 12/15/2022.

- \* If you return this well to service or plug it, please notify the District Office.
- \* If you sell this well you are required to file a Transfer of Operator form, T-1.
- \* If the well will remain temporarily abandoned, you must submit a new TA application, CP-111, before 12/15/2022.

You may contact me at the number above if you have questions.

Very truly yours,

David Bollenback"