

KANSAS CORPORATION COMMISSION  
OIL & GAS CONSERVATION DIVISION

TEMPORARY ABANDONMENT WELL APPLICATION

OPERATOR: License# \_\_\_\_\_  
 Name: \_\_\_\_\_  
 Address 1: \_\_\_\_\_  
 Address 2: \_\_\_\_\_  
 City: \_\_\_\_\_ State: \_\_\_\_\_ Zip: \_\_\_\_\_ + \_\_\_\_\_  
 Contact Person: \_\_\_\_\_  
 Phone: ( \_\_\_\_\_ ) \_\_\_\_\_  
 Contact Person Email: \_\_\_\_\_  
 Field Contact Person: \_\_\_\_\_  
 Field Contact Person Phone: ( \_\_\_\_\_ ) \_\_\_\_\_

API No. 15- \_\_\_\_\_  
 Spot Description: \_\_\_\_\_  
 \_\_\_\_\_ - \_\_\_\_\_ - \_\_\_\_\_ - \_\_\_\_\_ Sec. \_\_\_\_\_ Twp. \_\_\_\_\_ S. R. \_\_\_\_\_  E  W  
 \_\_\_\_\_ feet from  N /  S Line of Section  
 \_\_\_\_\_ feet from  E /  W Line of Section  
 GPS Location: Lat: \_\_\_\_\_, Long: \_\_\_\_\_  
(e.g. xx.xxxxx) (e.g. -xxx.xxxxx)  
 Datum:  NAD27  NAD83  WGS84  
 County: \_\_\_\_\_ Elevation: \_\_\_\_\_  GL  KB  
 Lease Name: \_\_\_\_\_ Well #: \_\_\_\_\_  
 Well Type: (check one)  Oil  Gas  OG  WSW  Other: \_\_\_\_\_  
 SWD Permit #: \_\_\_\_\_  ENHR Permit #: \_\_\_\_\_  
 Gas Storage Permit #: \_\_\_\_\_  
 Spud Date: \_\_\_\_\_ Date Shut-In: \_\_\_\_\_

	Conductor	Surface	Production	Intermediate	Liner	Tubing
Size						
Setting Depth						
Amount of Cement						
Top of Cement						
Bottom of Cement						

Casing Fluid Level from Surface: \_\_\_\_\_ How Determined? \_\_\_\_\_ Date: \_\_\_\_\_  
 Casing Squeeze(s): \_\_\_\_\_ to \_\_\_\_\_ w / \_\_\_\_\_ sacks of cement, \_\_\_\_\_ to \_\_\_\_\_ w / \_\_\_\_\_ sacks of cement. Date: \_\_\_\_\_  
(top) (bottom) (top) (bottom)  
 Do you have a valid Oil & Gas Lease?  Yes  No  
 Depth and Type:  Junk in Hole at \_\_\_\_\_  Tools in Hole at \_\_\_\_\_ Casing Leaks:  Yes  No Depth of casing leak(s): \_\_\_\_\_  
(depth) (depth)  
 Type Completion:  ALT. I  ALT. II Depth of:  DV Tool: \_\_\_\_\_ w / \_\_\_\_\_ sacks of cement  Port Collar: \_\_\_\_\_ w / \_\_\_\_\_ sack of cement  
(depth) (depth)  
 Packer Type: \_\_\_\_\_ Size: \_\_\_\_\_ Inch Set at: \_\_\_\_\_ Feet  
 Total Depth: \_\_\_\_\_ Plug Back Depth: \_\_\_\_\_ Plug Back Method: \_\_\_\_\_

**Geological Data:**

Formation Name	Formation Top	Formation Base	Completion Information
1. _____	At: _____	to _____ Feet	Perforation Interval _____ to _____ Feet or Open Hole Interval _____ to _____ Feet
2. _____	At: _____	to _____ Feet	Perforation Interval _____ to _____ Feet or Open Hole Interval _____ to _____ Feet

UNDER PENALTY OF PERJURY I HEREBY ATTEST THAT THE INFORMATION CONTAINED HEREIN IS TRUE AND CORRECT TO THE BEST OF MY KNOWLEDGE

Submitted Electronically

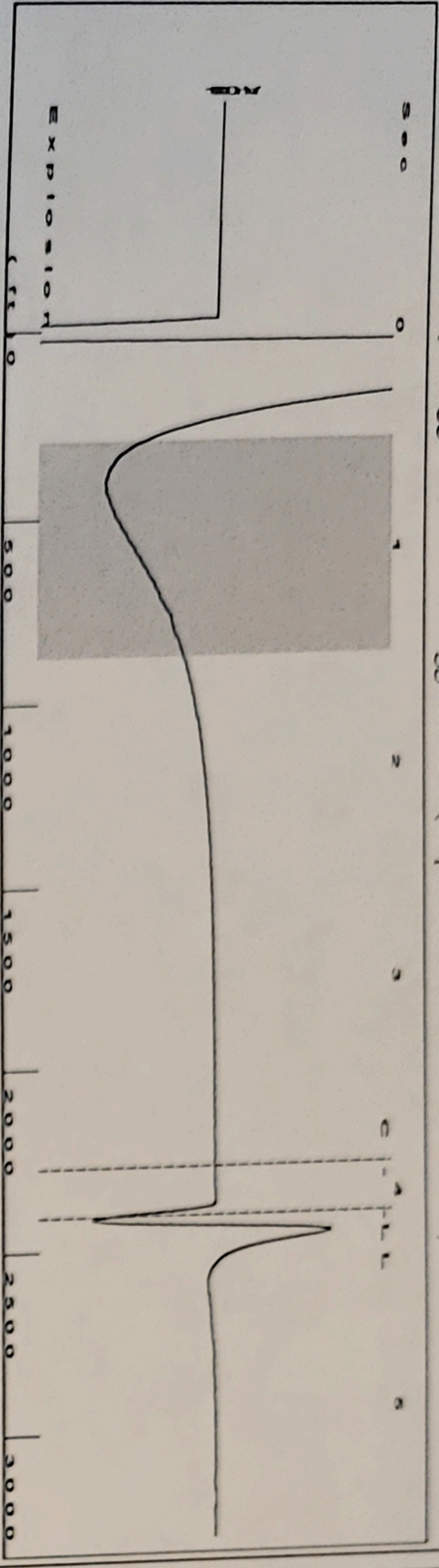
<b>Do NOT Write in This Space - KCC USE ONLY</b>	Date Tested: _____	Results: _____	Date Plugged: _____	Date Repaired: _____	Date Put Back in Service: _____
	Review Completed by: _____ Comments: _____				
TA Approved: <input type="checkbox"/> Yes <input type="checkbox"/> Denied Date: _____					

Mail to the Appropriate KCC Conservation Office:

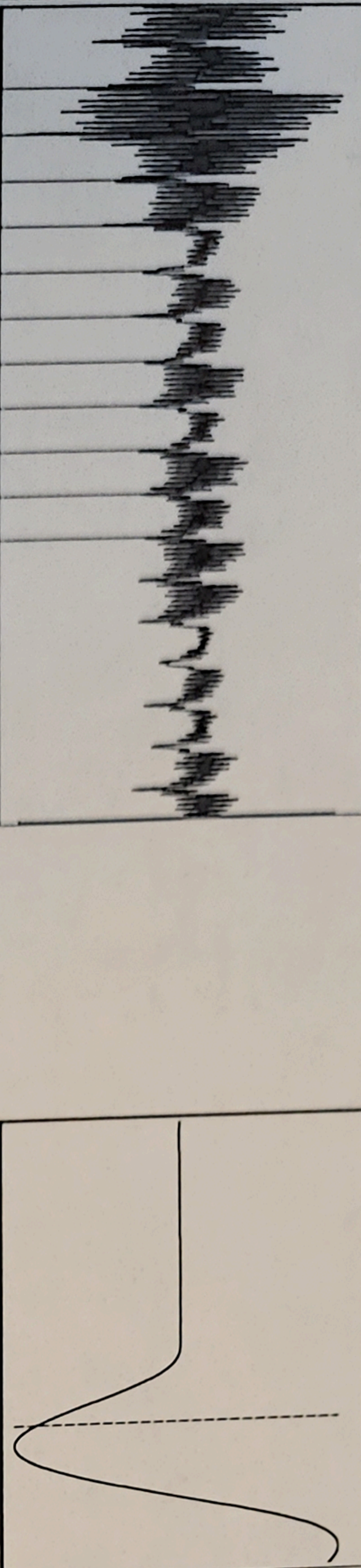
	KCC District Office #1 - 210 E. Frontview, Suite A, Dodge City, KS 67801	Phone 620.682.7933
	KCC District Office #2 - 3450 N. Rock Road, Building 600, Suite 601, Wichita, KS 67226	Phone 316.337.7400
	KCC District Office #3 - 137 E. 21st St., Chanute, KS 66720	Phone 620.902.6450
	KCC District Office #4 - 2301 E. 13th Street, Hays, KS 67601-2651	Phone 785.261.6250

Shot @ 300<sup>th</sup> DRH

Group: Wiggains Well: Wiggains 12-8 (acquired on: 12/07/21 11:07:13)



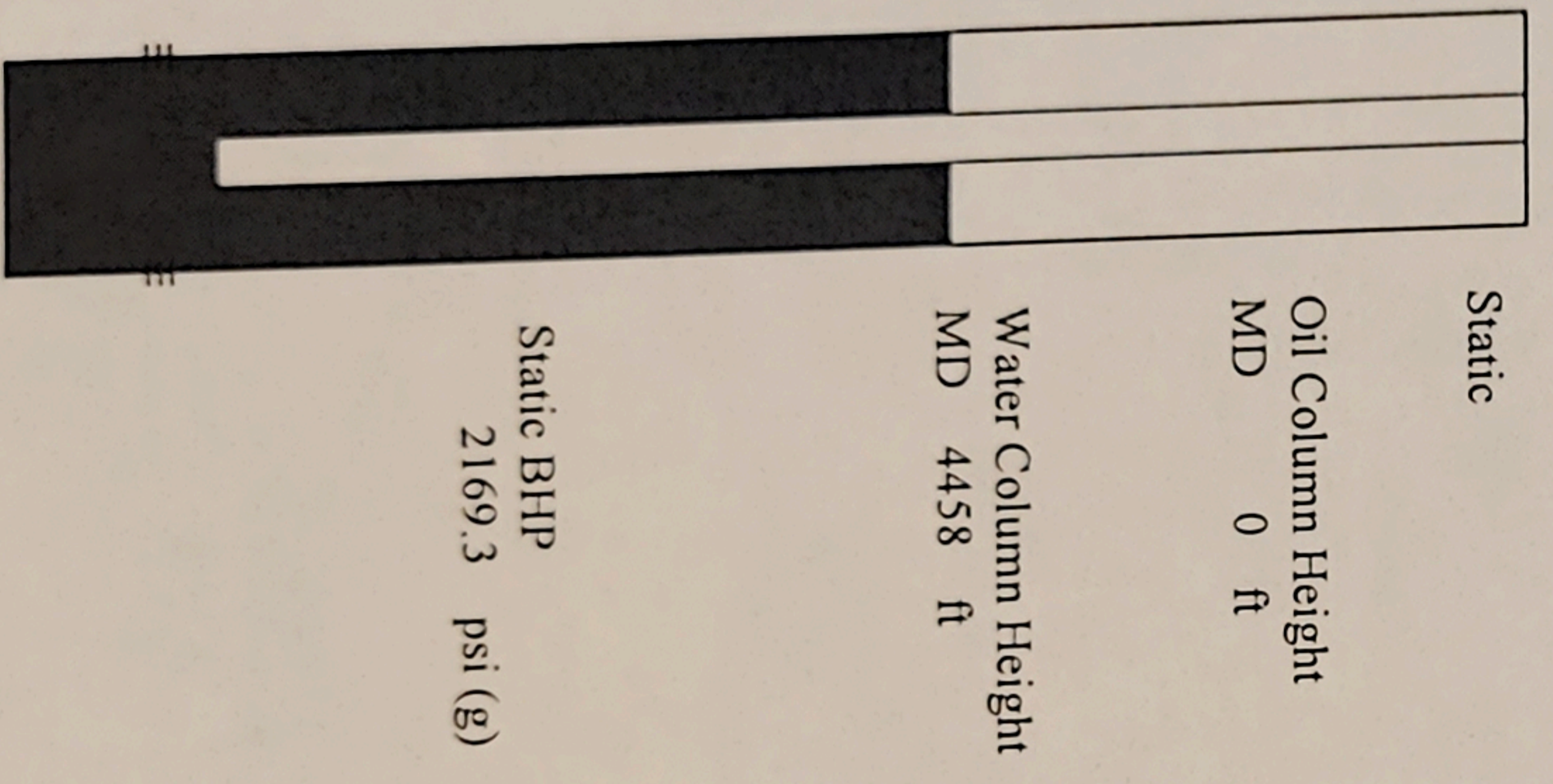
Filter Type High Pass Automatic Collar Count Yes  
 Manual Acoustic Velocity 1165.44 ft/s Manual JTS/sec 18.3824  
 Time 4.086 sec  
 Joints 75.8764 Jts  
 Depth 2405.28 ft



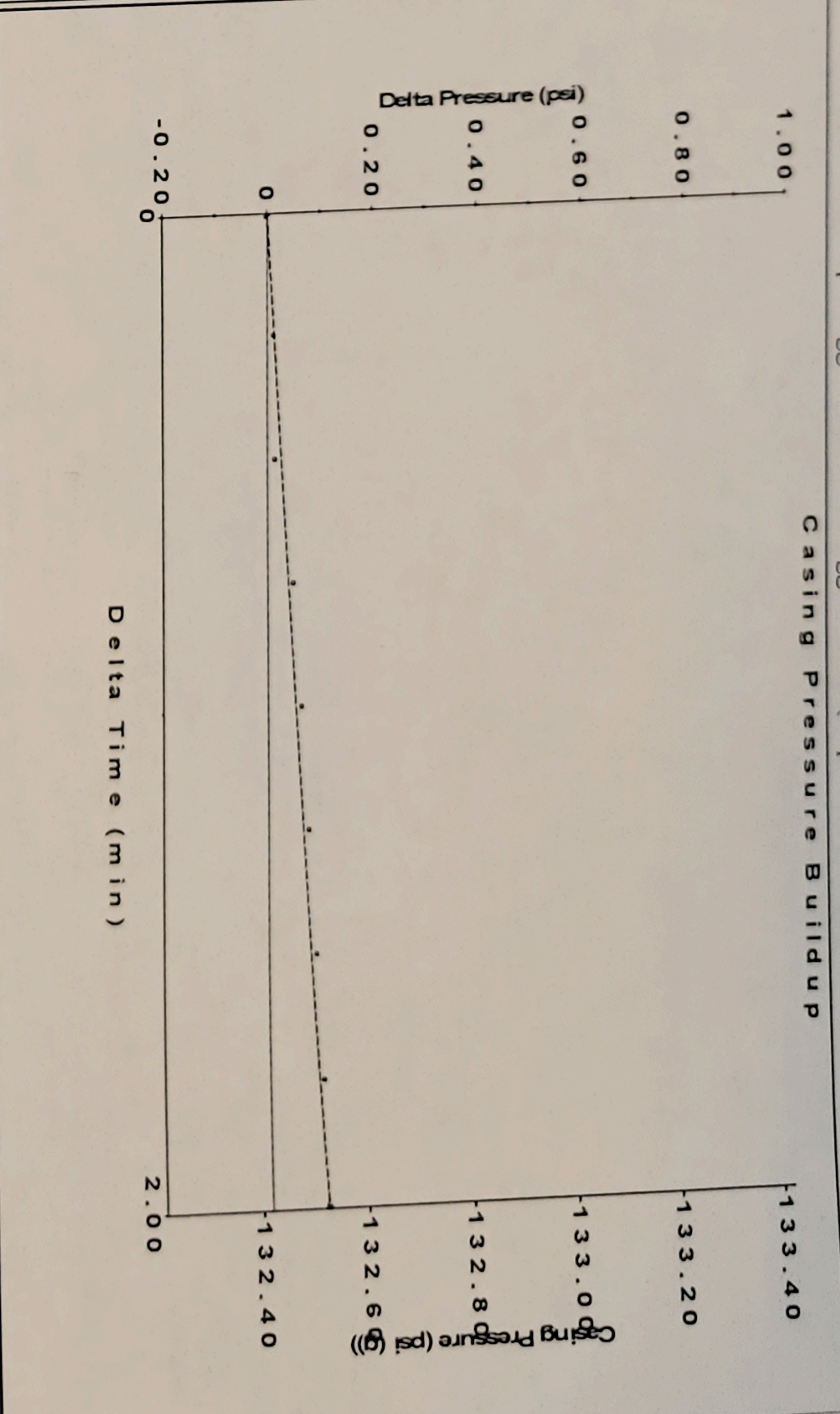
Analysis Method: Automatic

Group: Wiggains Well: Wiggains 12-8 (acquired on: 12/07/21 11:07:13)

Production	Potential	Casing Pressure	Static
Oil -*- BBL/D	-*- BBL/D	132.4 psi (g)	Oil Column Height MD 0 ft
Water -*- BBL/D	-*- BBL/D	Casing Pressure Buildup 0.1 psi	Water Column Height MD 4458 ft
Gas -*- Mscf/D	-*- Mscf/D	2.00 min	Static BHP 2169.3 psi (g)
IPR Method Vogel	Vogel -*- -	Gas/Liquid Interface Pressure 142.6 psi (g)	
PBHP/SBHP	-*- -	Liquid Level Depth 2405.28 ft	
Production Efficiency 0.0		Pump Intake Depth 6544.00 ft	
Oil 40 deg API		Formation Depth 6863.00 ft	
Water 1.05 Sp.Gr.H2O			
Gas 0.78 Sp.Gr.AIR			
Acoustic Velocity 1177.33 ft/s			

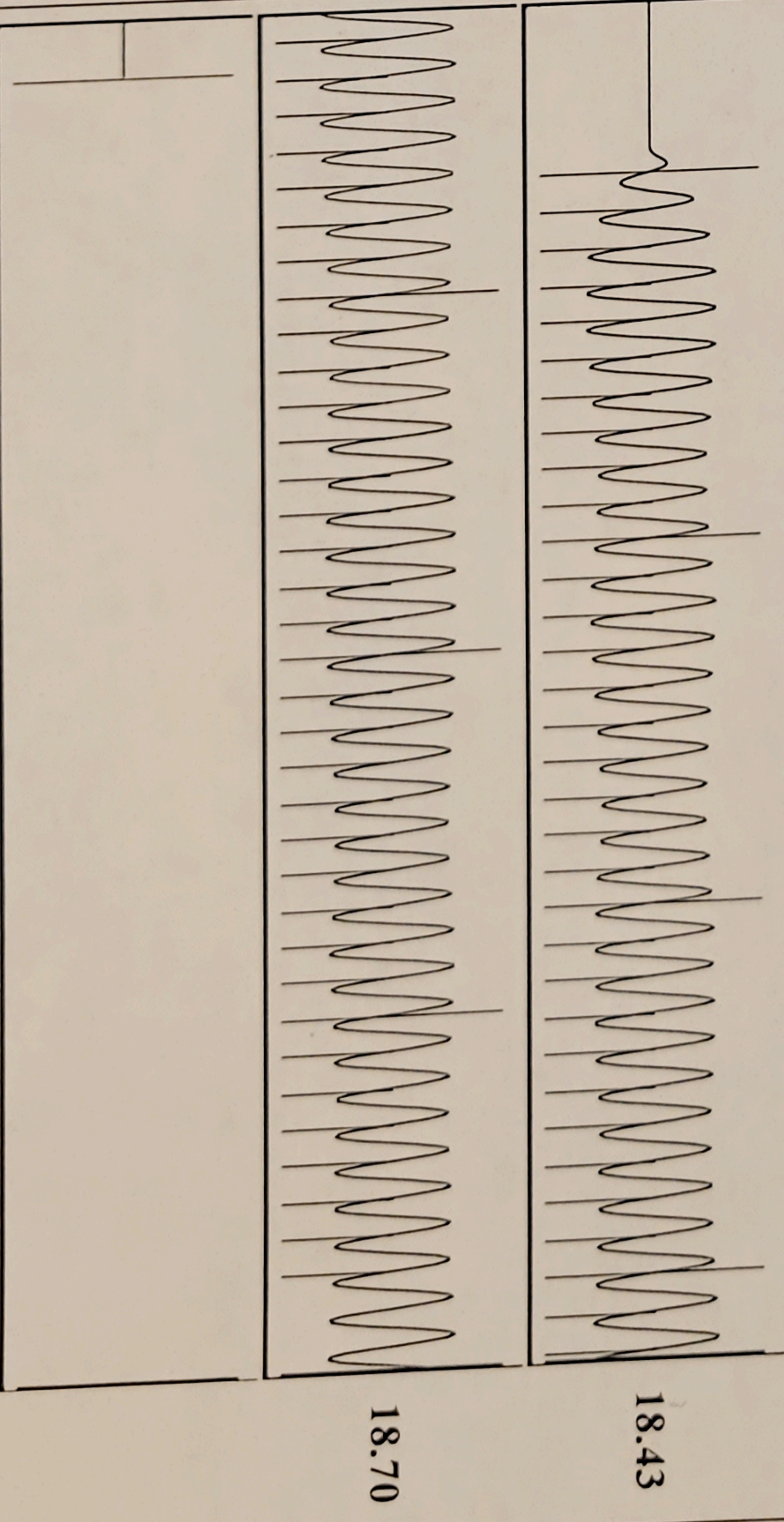


Group: Wiggains Well: Wiggains 12-8 (acquired on: 12/07/21 11:07:13)



Change in Pressure 0.11 psi PTT11249 Range  
 Change in Time 2.00 min 0 - ? psi

Group: Wiggains Well: Wiggains 12-8 (acquired on: 12/07/21 11:07:13)



Acoustic Velocity 1177.33 ft/s Joints counted 67  
 Joints Per Second 18.5698 Jts/sec Joints to liquid level 75.8764  
 Depth to liquid level 2405.28 ft Filter Width 16.3824  
 Automatic Collar Count Yes Time to 1st Collar 0.252 20.3824 3.86

December 16, 2021

Katherine McClurkan  
Merit Energy Company, LLC  
13727 Noel Road, Suite 1200  
DALLAS, TX 75240-7362

Re: Temporary Abandonment  
API 15-189-22775-00-00  
Wiggians 12-8  
NE/4 Sec.12-35S-36W  
Stevens County, Kansas

Dear Katherine McClurkan :

"Your temporary abandonment (TA) application for the well listed above has been approved. In accordance with K.A.R. 82-3-111 the TA status of this well will expire 12/16/2022.

- \* If you return this well to service or plug it, please notify the District Office.
- \* If you sell this well you are required to file a Transfer of Operator form, T-1.
- \* If the well will remain temporarily abandoned, you must submit a new TA application, CP-111, before 12/16/2022.

You may contact me at the number above if you have questions.

Very truly yours,

Michael Maier"