

KANSAS CORPORATION COMMISSION
OIL & GAS CONSERVATION DIVISION

TEMPORARY ABANDONMENT WELL APPLICATION

OPERATOR: License#
Name:
Address 1:
Address 2:
City: State: Zip:
Contact Person:
Phone:
Contact Person Email:
Field Contact Person:
Field Contact Person Phone:

API No. 15-
Spot Description:
Sec. Twp. S. R.
GPS Location: Lat, Long
Datum: NAD27, NAD83, WGS84
County: Elevation:
Lease Name: Well #:
Well Type: Oil, Gas, OG, WSW, Other
SWD Permit #: ENHR Permit #:
Gas Storage Permit #:
Spud Date: Date Shut-In:

Table with 7 columns: Conductor, Surface, Production, Intermediate, Liner, Tubing. Rows include Size, Setting Depth, Amount of Cement, Top of Cement, Bottom of Cement.

Casing Fluid Level from Surface: How Determined? Date:
Casing Squeeze(s): to w / sacks of cement, to w / sacks of cement. Date:
Do you have a valid Oil & Gas Lease? Yes No
Depth and Type: Junk in Hole at Tools in Hole at Casing Leaks: Yes No Depth of casing leak(s):
Type Completion: ALT. I ALT. II Depth of: DV Tool: w / sacks of cement Port Collar: w / sack of cement
Packer Type: Size: Inch Set at: Feet
Total Depth: Plug Back Depth: Plug Back Method:

Geological Date:

Table with 4 columns: Formation Name, Formation Top, Formation Base, Completion Information. Rows 1 and 2.

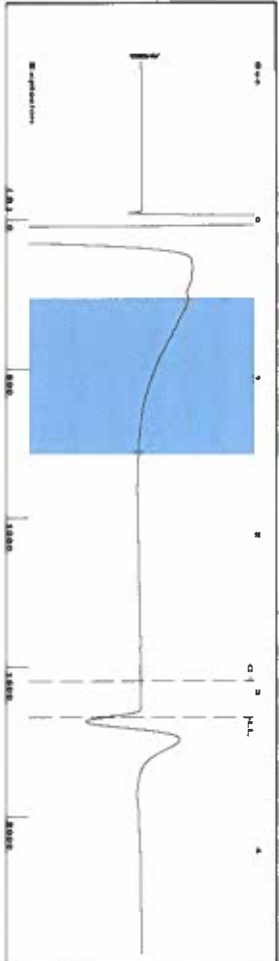
UNDER PENALTY OF PERJURY I HEREBY ATTEST THAT THE INFORMATION CONTAINED HEREIN IS TRUE AND CORRECT TO THE BEST OF MY KNOWLEDGE

Submitted Electronically

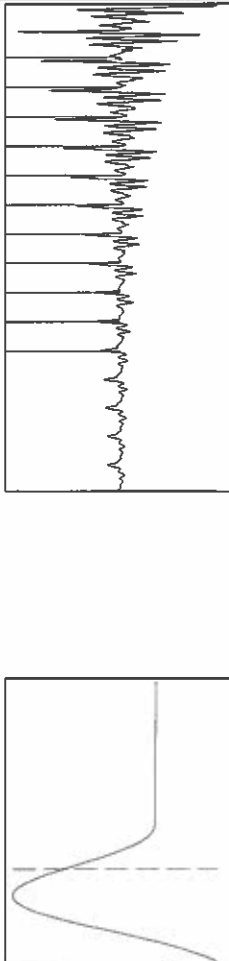
Form with fields: Do NOT Write in This Space - KCC USE ONLY, Date Tested, Results, Date Plugged, Date Repaired, Date Put Back in Service, Review Completed by, Comments, TA Approved: Yes Denied, Date.

Mail to the Appropriate KCC Conservation Office:

Table with 3 columns: District Office #, Address, Phone. Rows 1-4.



Filter Type High Pass Automatic Collar Count Yes
 Manual Acoustic Velo 1051.41 ft/s Manual JTS/sec 16.5837
 Time 3.158 sec
 Joints 52.6333 Jts
 Depth 1668.48 ft

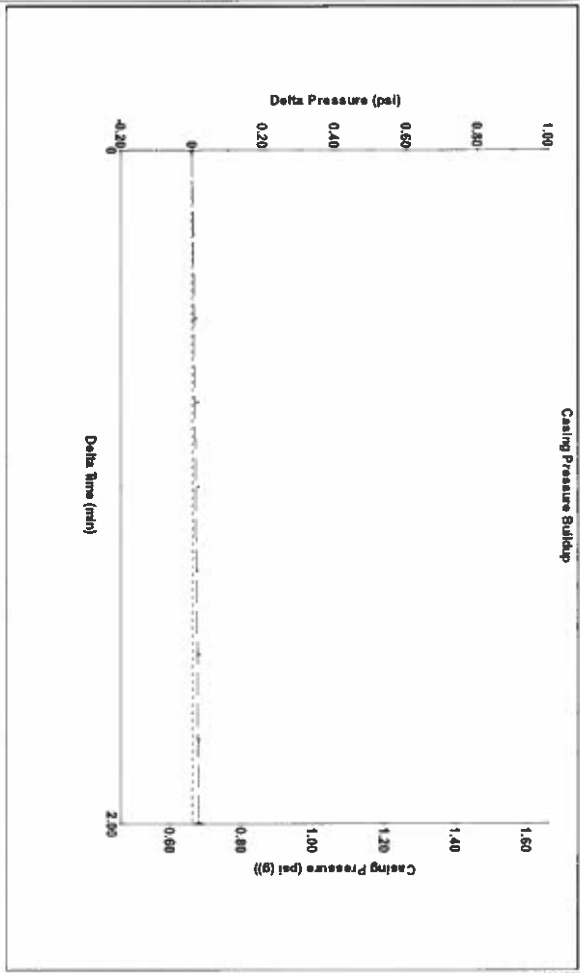


Analysis Method: Automatic

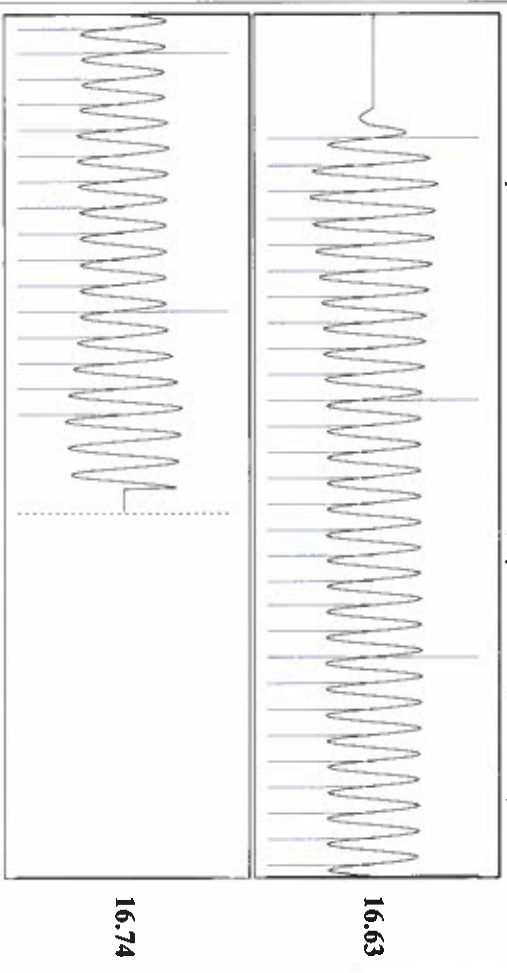
Production	Potential	Casing Pressure	Producing
Current	BBLD	0.7 psi (g)	Annular
Oil	BBLD	Casing Pressure Buildup	Gas Flow
Water	BBLD	0.0 psi	% Liquid
Gas	Misc/D	2.00 min	100 %
IPR Method	Vogel	Gas/Liquid Interface Pressure	
PBHP/SBHP		1.5 psi (g)	
Production Efficiency	0.0	Liquid Level Depth	
		1668.48 ft	
Oil	40 deg API	Pump Intake Depth	
Water	1.05 Sp.Gr.H2O	2889.00 ft	
Gas	0.92 Sp.Gr.AIR	Formation Depth	
		2906.00 ft	
Acoustic Velocity	1056.67 ft/s		
Formation Submergence			
Total Gaseous Liquid Column HT (TVD)	1221 ft		
Equivalent Gas Free Liquid HT (TVD)	1221 ft		
Acoustic Test			



Pump Intake 414.8 psi (g)
 Producing BHP 422.5 psi (g)
 Static BHP - - - psi (g)



Change in Pressure 0.02 psi PT9424
 Change in Time 2.00 min Range 0 - ? psi



Acoustic Velocity 1056.67 ft/s Joints counted 44
 Joints Per Second 16.6667 Jts/sec Joints to liquid level 52.6333
 Depth to liquid level 1668.48 ft Filter Width 14.5837
 Automatic Collar Count Yes Time to 1st Collar 0.288

December 16, 2021

Katherine McClurkan
Merit Energy Company, LLC
13727 Noel Road, Suite 1200
Dallas, TX 75240

Re: Temporary Abandonment
API 15-129-21202-00-01
Boaldin 1-16
SW/4 Sec.16-35S-43W
Morton County, Kansas

Dear Katherine McClurkan:

"Your temporary abandonment (TA) application for the well listed above has been approved. In accordance with K.A.R. 82-3-111 the TA status of this well will expire 12/16/2022.

- * If you return this well to service or plug it, please notify the District Office.
- * If you sell this well you are required to file a Transfer of Operator form, T-1.
- * If the well will remain temporarily abandoned, you must submit a new TA application, CP-111, before 12/16/2022.

You may contact me at the number above if you have questions.

Very truly yours,

Michael Maier"