

KANSAS CORPORATION COMMISSION
OIL & GAS CONSERVATION DIVISION

TEMPORARY ABANDONMENT WELL APPLICATION

All blanks must be complete

OPERATOR: License# _____
Name: _____
Address 1: _____
Address 2: _____
City: _____ State: _____ Zip: _____ + _____
Contact Person: _____
Phone: (_____) _____
Contact Person Email: _____
Field Contact Person: _____
Field Contact Person Phone: (_____) _____

API No. 15- _____
Spot Description: _____
____ - ____ - ____ - ____ Sec. _____ Twp. _____ S. R. _____ E W
_____ feet from N / S Line of Section
_____ feet from E / W Line of Section
GPS Location: Lat: _____, Long: _____
(e.g. xx.xxxxx) (e.g. -xxx.xxxxx)
Datum: NAD27 NAD83 WGS84
County: _____ Elevation: _____ GL KB
Lease Name: _____ Well #: _____
Well Type: (check one) Oil Gas OG WSW Other: _____
 SWD Permit #: _____ ENHR Permit #: _____
 Gas Storage Permit #: _____
Spud Date: _____ Date Shut-In: _____

	Conductor	Surface	Production	Intermediate	Liner	Tubing
Size						
Setting Depth						
Amount of Cement						
Top of Cement						
Bottom of Cement						

Casing Fluid Level from Surface: _____ How Determined? _____ Date: _____
Casing Squeeze(s): _____ to _____ w / _____ sacks of cement, _____ to _____ w / _____ sacks of cement. Date: _____
(top) (bottom) (top) (bottom)
Do you have a valid Oil & Gas Lease? Yes No
Depth and Type: Junk in Hole at _____ (depth) Tools in Hole at _____ (depth) Casing Leaks: Yes No Depth of casing leak(s): _____
Type Completion: ALT. I ALT. II Depth of: DV Tool: _____ w / _____ sacks of cement Port Collar: _____ w / _____ sack of cement
(depth) (depth)
Packer Type: _____ Size: _____ Inch Set at: _____ Feet
Total Depth: _____ Plug Back Depth: _____ Plug Back Method: _____

Geological Data:

Formation Name	Formation Top	Formation Base	Completion Information
1. _____	At: _____	to _____ Feet	Perforation Interval _____ to _____ Feet or Open Hole Interval _____ to _____ Feet
2. _____	At: _____	to _____ Feet	Perforation Interval _____ to _____ Feet or Open Hole Interval _____ to _____ Feet

UNDER PENALTY OF PERJURY I HEREBY ATTEST THAT THE INFORMATION CONTAINED HEREIN IS TRUE AND CORRECT TO THE BEST OF MY KNOWLEDGE

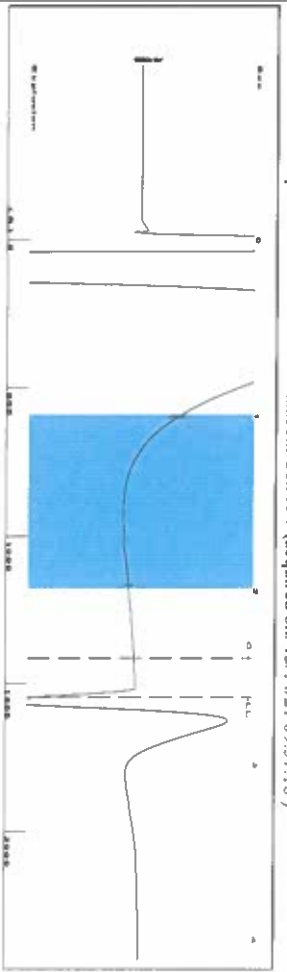
Submitted Electronically

Do NOT Write in This Space - KCC USE ONLY	Date Tested: _____	Results: _____	Date Plugged: _____	Date Repaired: _____	Date Put Back in Service: _____
	Review Completed by: _____ Comments: _____				
TA Approved: <input type="checkbox"/> Yes <input type="checkbox"/> Denied Date: _____					

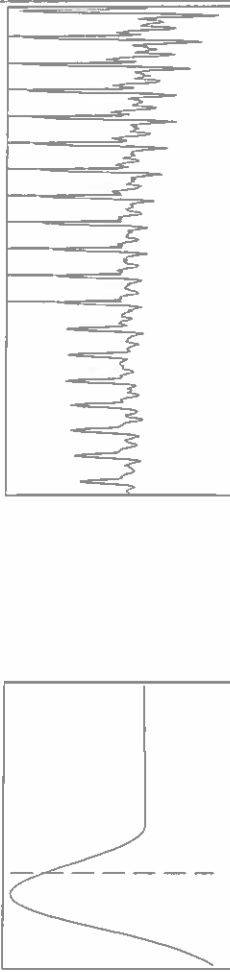
Mail to the Appropriate KCC Conservation Office:

	KCC District Office #1 - 210 E. Frontview, Suite A, Dodge City, KS 67801	Phone 620.682.7933
	KCC District Office #2 - 3450 N. Rock Road, Building 600, Suite 601, Wichita, KS 67226	Phone 316.337.7400
	KCC District Office #3 - 137 E. 21st St., Chanute, KS 66720	Phone 620.902.6450
	KCC District Office #4 - 2301 E. 13th Street, Hays, KS 67601-2651	Phone 785.261.6250

Group: SUBLETTE Well: Elizabeth Cox A-7 (acquired on: 12/14/21 09:57:16)



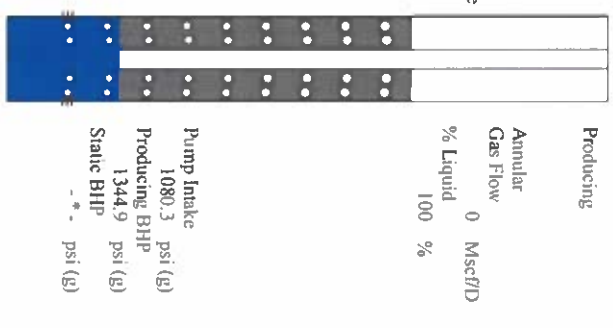
Filter Type High Pass
 Manual Acoustic Veloc 163.3 ft/s
 Automatic Collar Count Yes
 Manual JTS/sec 18.3486
 Time 2.615 sec
 Joints 48.75 Jts
 Depth 1545.38 ft



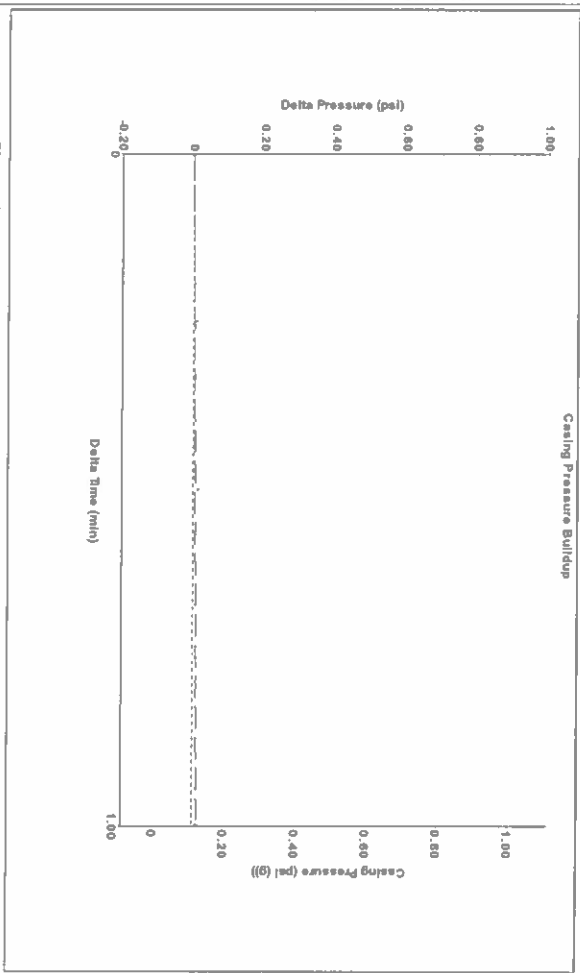
Analysis Method: Automatic

Group: SUBLETTE Well: Elizabeth Cox A-7 (acquired on: 12/14/21 09:57:16)

Production	Potential	Casing Pressure	Producing
Current	-* BBL/D	0.1 psi (g)	Annular
Oil	-* BBL/D	Casing Pressure Buildup	Gas Flow
Water	-* Mscf/D	0.012 psi	0 Mscf/D
Gas	-* Mscf/D	1.00 min	% Liquid
IPIR Method	Voyel	Gas/Liquid Interface Pressure	100 %
PBHP/SBHP	-* -	0.8 psi (g)	
Production Efficiency	0.0		
Oil	40 deg API	Liquid Level Depth	
Water	1.05 Sp.Gr:H2O	1545.38 ft	
Gas	0.79 Sp.Gr:AIR	Pump Intake Depth	
Acoustic Velocity	1181.93 ft/s	4833.00 ft	
		Formation Depth	
		5415.00 ft	

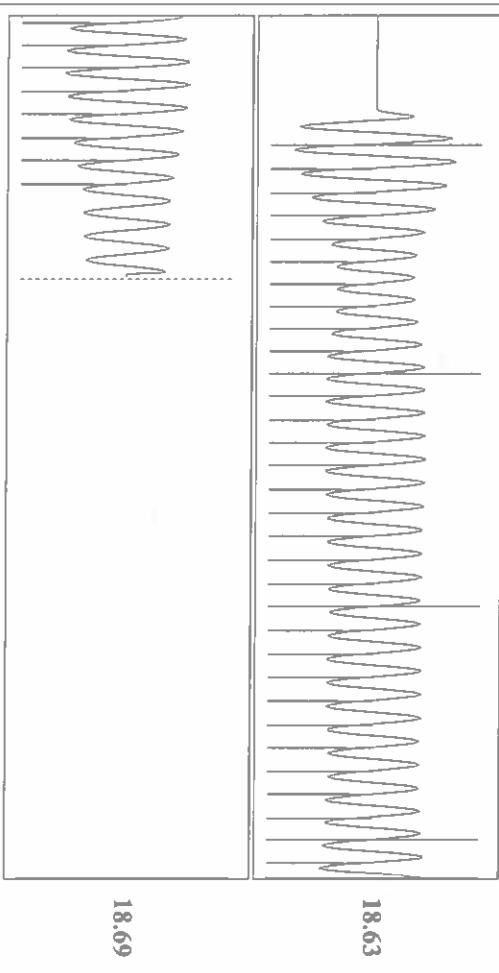


Group: SUBLETTE Well: Elizabeth Cox A-7 (acquired on: 12/14/21 09:57:16)



Change in Pressure 0.01 psi
 Change in Time 1.00 min
 PT16716
 Range 0 - ? psi

Group: SUBLETTE Well: Elizabeth Cox A-7 (acquired on: 12/14/21 09:57:16)



Acoustic Velocity 1181.93 ft/s
 Joints Per Second 18.6424 Jts/sec
 Depth to liquid level 1545.38 ft
 Automatic Collar Count Yes
 Joints counted 39
 Joints to liquid level 48.75
 Filter Width 16.3486
 Time to 1st Collar 2.392

Conservation Division
District Office No. 1
210 E. Frontview, Suite A
Dodge City, KS 67801



Phone: 620-682-7933
<http://kcc.ks.gov/>

Andrew J. French, Chairperson
Dwight D. Keen, Commissioner
Susan K. Duffy, Commissioner

Laura Kelly, Governor

December 16, 2021

Katherine McClurkan
Merit Energy Company, LLC
13727 Noel Road, Suite 1200
Dallas, TX 75240

Re: Temporary Abandonment
API 15-081-21944-00-00
Elizabeth A. Cox 7
SW/4 Sec.08-30S-33W
Haskell County, Kansas

Dear Katherine McClurkan:

"Your temporary abandonment (TA) application for the well listed above has been approved. In accordance with K.A.R. 82-3-111 the TA status of this well will expire 12/16/2022.

- * If you return this well to service or plug it, please notify the District Office.
- * If you sell this well you are required to file a Transfer of Operator form, T-1.
- * If the well will remain temporarily abandoned, you must submit a new TA application, CP-111, before 12/16/2022.

You may contact me at the number above if you have questions.

Very truly yours,

Michael Maier"