

KANSAS CORPORATION COMMISSION
OIL & GAS CONSERVATION DIVISION

TEMPORARY ABANDONMENT WELL APPLICATION

OPERATOR: License#
Name:
Address 1:
Address 2:
City: State: Zip:
Contact Person:
Phone:
Contact Person Email:
Field Contact Person:
Field Contact Person Phone:

API No. 15-
Spot Description:
Sec. Twp. S. R.
GPS Location: Lat: Long:
Datum: NAD27 NAD83 WGS84
County: Elevation:
Lease Name: Well #:
Well Type: Oil Gas OG WSW Other:
SWD Permit #: ENHR Permit #:
Gas Storage Permit #:
Spud Date: Date Shut-In:

Table with 7 columns: Conductor, Surface, Production, Intermediate, Liner, Tubing. Rows include Size, Setting Depth, Amount of Cement, Top of Cement, Bottom of Cement.

Casing Fluid Level from Surface: How Determined? Date:
Casing Squeeze(s): to w / sacks of cement, to w / sacks of cement. Date:
Do you have a valid Oil & Gas Lease? Yes No
Depth and Type: Junk in Hole at Tools in Hole at Casing Leaks: Yes No Depth of casing leak(s):
Type Completion: ALT. I ALT. II Depth of: DV Tool: w / sacks of cement Port Collar: w / sack of cement
Packer Type: Size: Inch Set at: Feet
Total Depth: Plug Back Depth: Plug Back Method:

Geological Data:

Table with 4 columns: Formation Name, Formation Top, Formation Base, Completion Information. Rows 1 and 2.

UNDER PENALTY OF PERJURY I HEREBY ATTEST THAT THE INFORMATION CONTAINED HEREIN IS TRUE AND CORRECT TO THE BEST OF MY KNOWLEDGE

Submitted Electronically

Form with fields: Do NOT Write in This Space - KCC USE ONLY, Date Tested, Results, Date Plugged, Date Repaired, Date Put Back in Service, Review Completed by, Comments, TA Approved: Yes Denied, Date.

Mail to the Appropriate KCC Conservation Office:

Table with 2 columns: Office Address, Phone. Rows for KCC District Office #1, #2, #3, #4.

Liquid Level

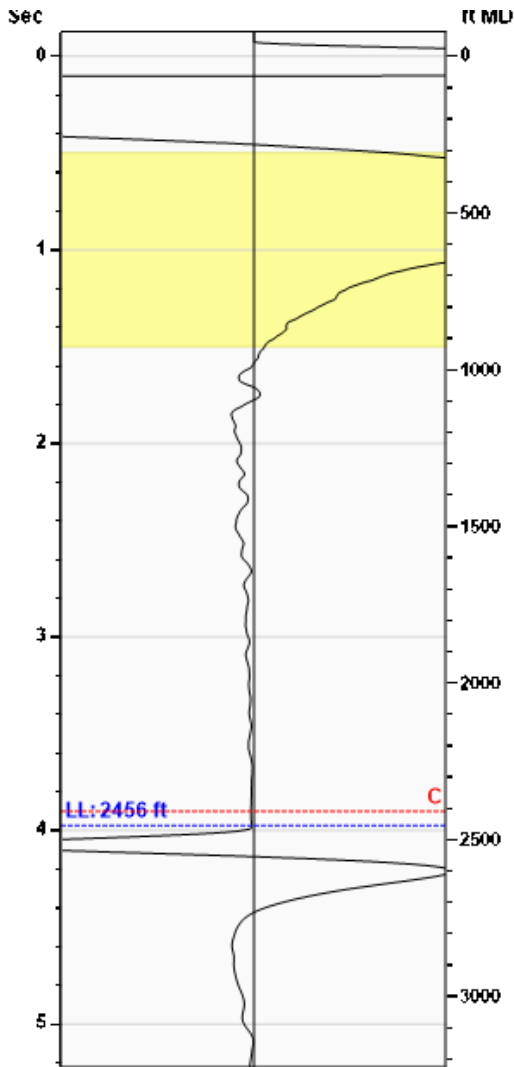
2456 ft MD

Fluid Above Pump

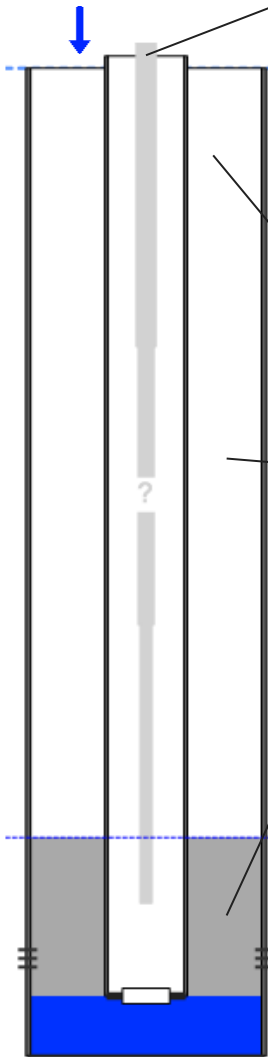
Equivalent Gas Free Above Pump

505 ft TVD

490 ft TVD



Gun - WRFG753



Production

Date Entered	11/16/21		
	Current	Potential	
Oil	**	**	BBL/D
Water	**	**	BBL/D
Gas	**	**	Mscf/D
IPR Method	Vogel		
PBHP/SBHP	-0.00		
Producing Efficiency	0.00%		

Casing Pressure

Pressure	1.4 psi (g)
----------	-------------

Annular Gas Flow

Gas Flow	1.0 Mscf/D
----------	------------

Fluid Properties

% Liquid Above Pump	96.51%
% Liquid Below Pump	**

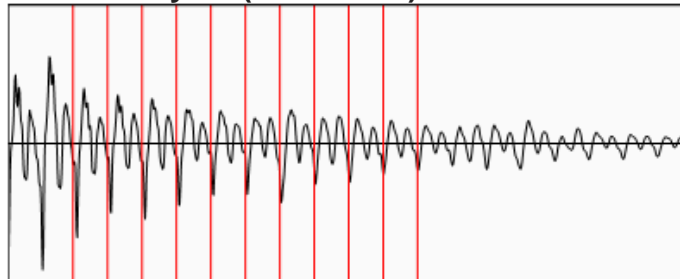
Depths

Pump Intake Depth	2961 ft
Formation Depth	2881 ft

Wellbore Pressures

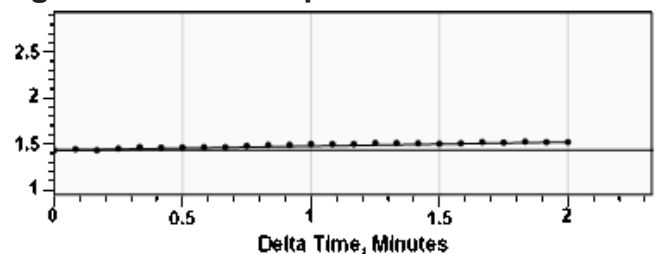
PIP	168.6 psi (g)
PBHP	141.7 psi (g)
SBHP	**
Gas/Liq Interface	2.5 psi (g)

Collar Analysis (Automatic)



Average Acoustic Velocity	1236 ft/s
Average Joints Per Sec.	19.85 Jts/sec
Joints To Liquid	78.89 Jts

Casing Pressure Buildup



Casing Pressure	1.4 psi (g)
Buildup	0.1 psi (g)
Buildup Time	2 min 0 sec
Gas Gravity from Collar Analysis (Automatic)	0.7650 Air = 1

Comments and Recommendations

Echometer Company
 5001 Ditto Lane
 Wichita Falls, TX 76302
 (940) 767-4334
 info@echometer.com

December 16, 2021

Katherine McClurkan
Merit Energy Company, LLC
13727 Noel Road, Suite 1200
Dallas, TX 75240-7362

Re: Temporary Abandonment
API 15-093-21376-00-01
Cannon A 3
SE/4 Sec.23-23S-35W
Kearny County, Kansas

Dear Katherine McClurkan:

"Your temporary abandonment (TA) application for the well listed above has been approved. In accordance with K.A.R. 82-3-111 the TA status of this well will expire 12/16/2022.

- * If you return this well to service or plug it, please notify the District Office.
- * If you sell this well you are required to file a Transfer of Operator form, T-1.
- * If the well will remain temporarily abandoned, you must submit a new TA application, CP-111, before 12/16/2022.

You may contact me at the number above if you have questions.

Very truly yours,

Michael Maier"