

KANSAS CORPORATION COMMISSION
OIL & GAS CONSERVATION DIVISION

TEMPORARY ABANDONMENT WELL APPLICATION

OPERATOR: License#
Name:
Address 1:
Address 2:
City: State: Zip:
Contact Person:
Phone:
Contact Person Email:
Field Contact Person:
Field Contact Person Phone:

API No. 15-
Spot Description:
Sec. Twp. S. R.
feet from N / S Line of Section
feet from E / W Line of Section
GPS Location: Lat: , Long:
Datum: NAD27 NAD83 WGS84
County: Elevation: GL KB
Lease Name: Well #:
Well Type: Oil Gas OG WSW Other:
SWD Permit #: ENHR Permit #:
Gas Storage Permit #:
Spud Date: Date Shut-In:

Table with 7 columns: Conductor, Surface, Production, Intermediate, Liner, Tubing. Rows include Size, Setting Depth, Amount of Cement, Top of Cement, Bottom of Cement.

Casing Fluid Level from Surface: How Determined? Date:
Casing Squeeze(s): to w / sacks of cement, to w / sacks of cement. Date:
Do you have a valid Oil & Gas Lease? Yes No
Depth and Type: Junk in Hole at Tools in Hole at Casing Leaks: Yes No Depth of casing leak(s):
Type Completion: ALT. I ALT. II Depth of: DV Tool: w / sacks of cement Port Collar: w / sack of cement
Packer Type: Size: Inch Set at: Feet
Total Depth: Plug Back Depth: Plug Back Method:

Geological Date:

Table with 4 columns: Formation Name, Formation Top, Formation Base, Completion Information. Rows 1 and 2.

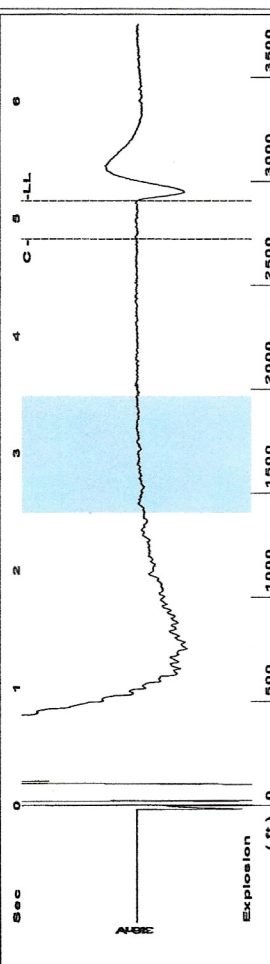
UNDER PENALTY OF PERJURY I HEREBY ATTEST THAT THE INFORMATION CONTAINED HEREIN IS TRUE AND CORRECT TO THE BEST OF MY KNOWLEDGE

Submitted Electronically

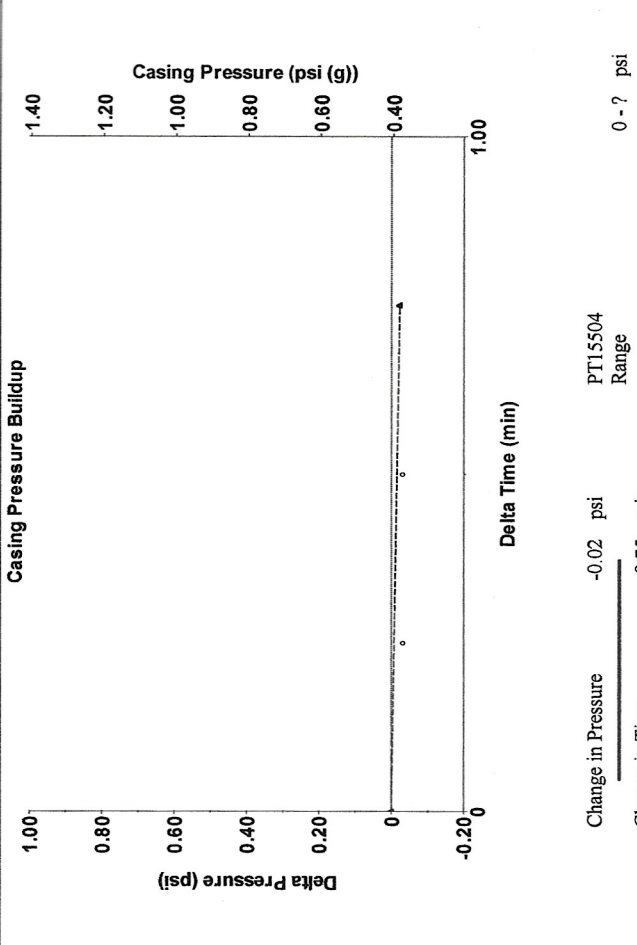
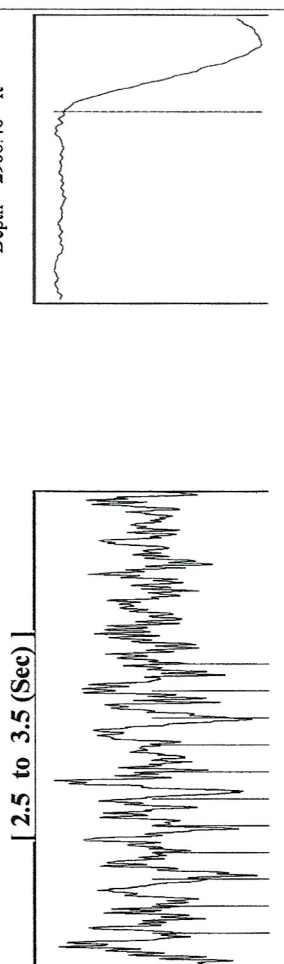
Do NOT Write in This Space - KCC USE ONLY
Date Tested: Results: Date Plugged: Date Repaired: Date Put Back in Service:
Review Completed by: Comments:
TA Approved: Yes Denied Date:

Mail to the Appropriate KCC Conservation Office:

Table with 3 columns: District Office, Address, Phone. Rows for District Office #1, #2, #3, #4.



Filter Type High Pass Automatic Collar Count Yes Time 5.155 sec
 Manual Acoustic Veloc 140.94 ft/s Manual JTS/sec 18.1159 Joints 92.2977 Jts
 Depth 2906.46 ft



Change in Pressure -0.02 psi PT15504 Range
 Change in Time 0.75 min

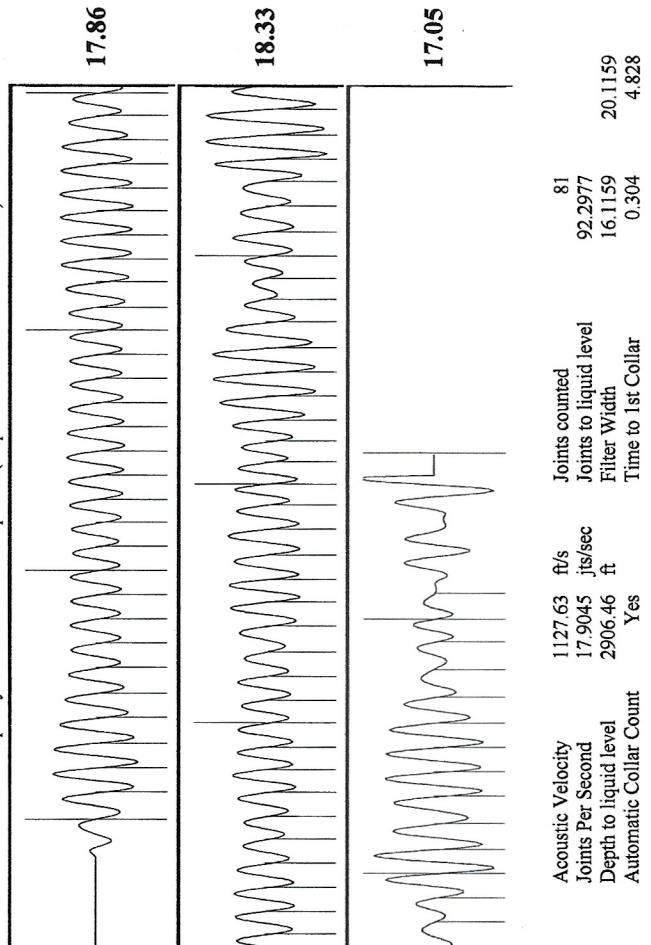
Analysis Method: Automatic

Production	Potential	Casing Pressure	0.4 psi (g)
Current	- * - BBL/D	Casing Pressure Buildup	-0.023 psi
Oil	- * - BBL/D	Gas Flow	0 Mscf/D
Water	- * - BBL/D	% Liquid	100 %
Gas	- * - Mscf/D	Gas/Liquid Interface Pressure	1.7 psi (g)
IPR Method	Vogel	Liquid Level Depth	2906.46 ft
PBHP/SBHP	- * -	Pump Intake Depth	4660.00 ft
Production Efficiency	0.0	Formation Depth	4775.00 ft
Oil	39 deg API		
Water	1.05 Sp.Gr.H2O		
Gas	0.86 Sp.Gr.AIR		
Acoustic Velocity	1127.63 ft/s		

Producing	Pump Intake	799.0 psi (g)
Annular	Producing BHP	851.3 psi (g)
Gas Flow	Static BHP	- * - psi (g)

Formation Submergence	1754 ft
Total Gaseous Liquid Column HT (TVD)	1754 ft
Equivalent Gas Free Liquid HT (TVD)	

Acoustic Test	Acoustic Velocity	1127.63 ft/s	Joints counted	81
	Joints Per Second	17.9045 jts/sec	Joints to liquid level	92.2977
	Depth to liquid level	2906.46 ft	Filter Width	16.1159
	Automatic Collar Count	Yes	Time to 1st Collar	0.304
				20.1159
				4.828



Acoustic Velocity 1127.63 ft/s Joints counted 81
 Joints Per Second 17.9045 jts/sec Joints to liquid level 92.2977
 Depth to liquid level 2906.46 ft Filter Width 16.1159
 Automatic Collar Count Yes Time to 1st Collar 0.304

December 16, 2021

Catherine H Stucky
Hartman Oil Co., Inc.
10500 E BERKELEY SQ PKWY STE 100
WICHITA, KS 67206-6816

Re: Temporary Abandonment
API 15-055-10055-00-00
FINNUP A4
NW/4 Sec.34-22S-33W
Finney County, Kansas

Dear Catherine H Stucky:

"Your temporary abandonment (TA) application for the well listed above has been approved. In accordance with K.A.R. 82-3-111 the TA status of this well will expire 12/16/2022.

- * If you return this well to service or plug it, please notify the District Office.
- * If you sell this well you are required to file a Transfer of Operator form, T-1.
- * If the well will remain temporarily abandoned, you must submit a new TA application, CP-111, before 12/16/2022.

You may contact me at the number above if you have questions.

Very truly yours,

Michael Maier"