

KANSAS CORPORATION COMMISSION
OIL & GAS CONSERVATION DIVISION

TEMPORARY ABANDONMENT WELL APPLICATION

OPERATOR: License#
Name:
Address 1:
Address 2:
City: State: Zip:
Contact Person:
Phone:
Contact Person Email:
Field Contact Person:
Field Contact Person Phone:

API No. 15-
Spot Description:
Sec. Twp. S. R.
GPS Location: Lat: Long:
Datum: NAD27 NAD83 WGS84
County: Elevation:
Lease Name: Well #:
Well Type: Oil Gas OG WSW Other:
SWD Permit #: ENHR Permit #:
Gas Storage Permit #:
Spud Date: Date Shut-In:

Table with 7 columns: Conductor, Surface, Production, Intermediate, Liner, Tubing. Rows include Size, Setting Depth, Amount of Cement, Top of Cement, Bottom of Cement.

Casing Fluid Level from Surface: How Determined? Date:
Casing Squeeze(s): to w / sacks of cement, to w / sacks of cement. Date:
Do you have a valid Oil & Gas Lease? Yes No
Depth and Type: Junk in Hole at Tools in Hole at Casing Leaks: Yes No Depth of casing leak(s):
Type Completion: ALT. I ALT. II Depth of: DV Tool: w / sacks of cement Port Collar: w / sack of cement
Packer Type: Size: Inch Set at: Feet
Total Depth: Plug Back Depth: Plug Back Method:

Geological Data:

Table with 4 columns: Formation Name, Formation Top, Formation Base, Completion Information. Rows 1 and 2.

UNDER PENALTY OF PERJURY I HEREBY ATTEST THAT THE INFORMATION CONTAINED HEREIN IS TRUE AND CORRECT TO THE BEST OF MY KNOWLEDGE

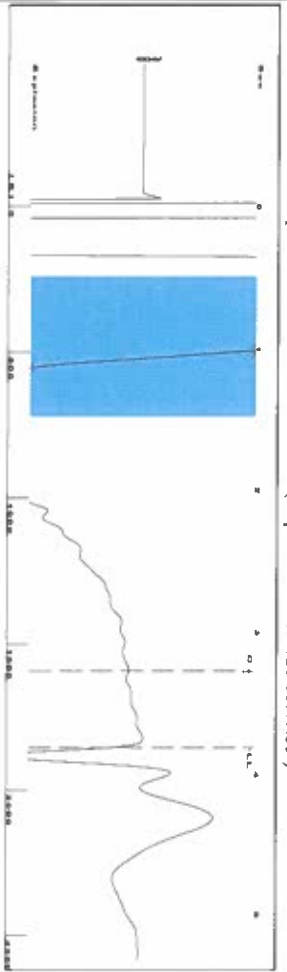
Submitted Electronically

Do NOT Write in This Space - KCC USE ONLY
Date Tested: Results: Date Plugged: Date Repaired: Date Put Back in Service:
Review Completed by: Comments:
TA Approved: Yes Denied Date:

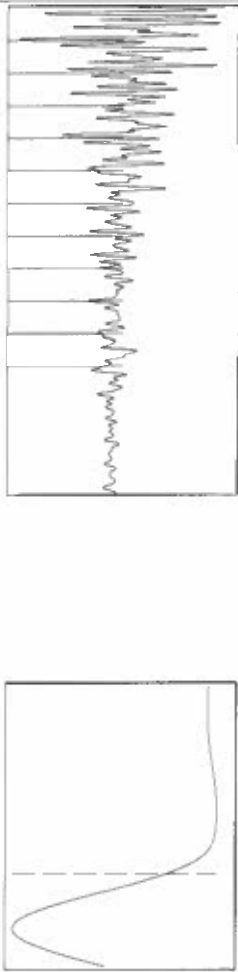
Mail to the Appropriate KCC Conservation Office:

Table with 2 columns: Office Address, Phone. Rows for District Office #1, #2, #3, #4.

Group: SUBLETTE Well: Hall K-6 (acquired on: 12/14/21 10:47:35)



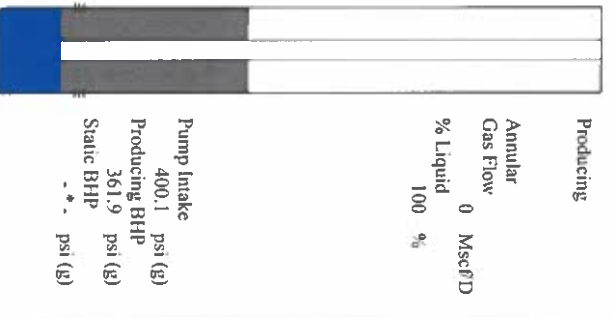
Filter Type High Pass Automatic Collar Count Yes
 Manual Acoustic Velo 945.646 ft/s Manual JTS/sec 15.015
 Time 3.821 sec
 Joints 58.9028 Jts
 Depth 1854.85 ft



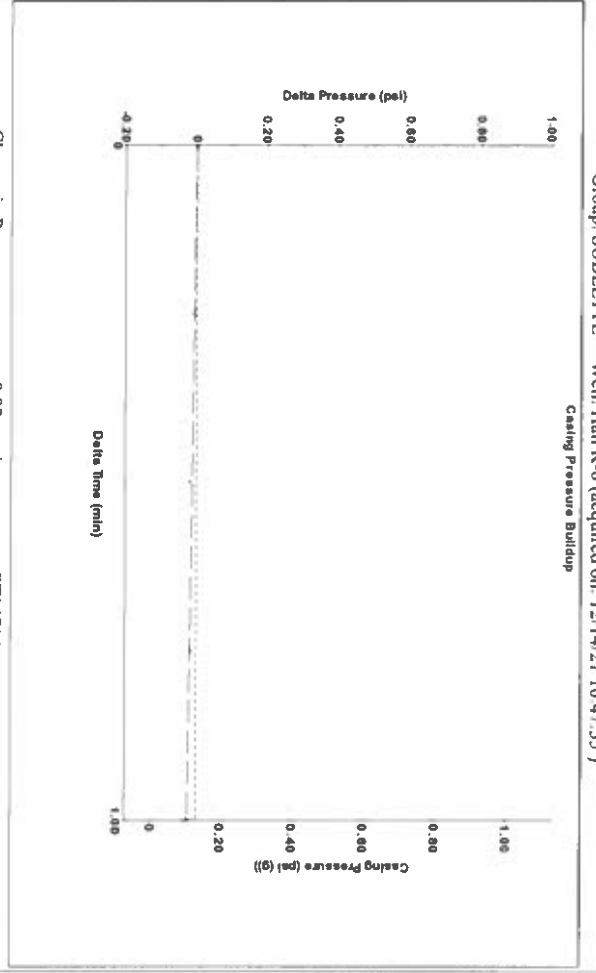
Analysis Method: Automatic

Group: SUBLETTE Well: Hall K-6 (acquired on: 12/14/21 10:47:35)

Production Current	Potential	Casing Pressure	Producing
Oil -*- BBL/D	-*- BBL/D	0.1 psi (g)	Annular Gas Flow
Water -*- BBL/D	-*- BBL/D	Casing Pressure Buildup	0 Msc/D
Gas -*- Msc/D	-*- Msc/D	-0.023 psi	% Liquid
IPR Method	Vogel	Gas/Liquid Interface Pressure	100 %
PBHP/SBHP	-*-	1.00 min	
Production Efficiency	0.0	1.1 psi (g)	
Oil 40 deg API		Liquid Level Depth	
Water 1.05 Sp.Gr:H2O		1854.85 ft	
Gas 1.00 Sp.Gr:AIR		Pump Intake Depth	
Acoustic Velocity	970.871 ft/s	3033.00 ft	
		Formation Depth	
		2917.00 ft	

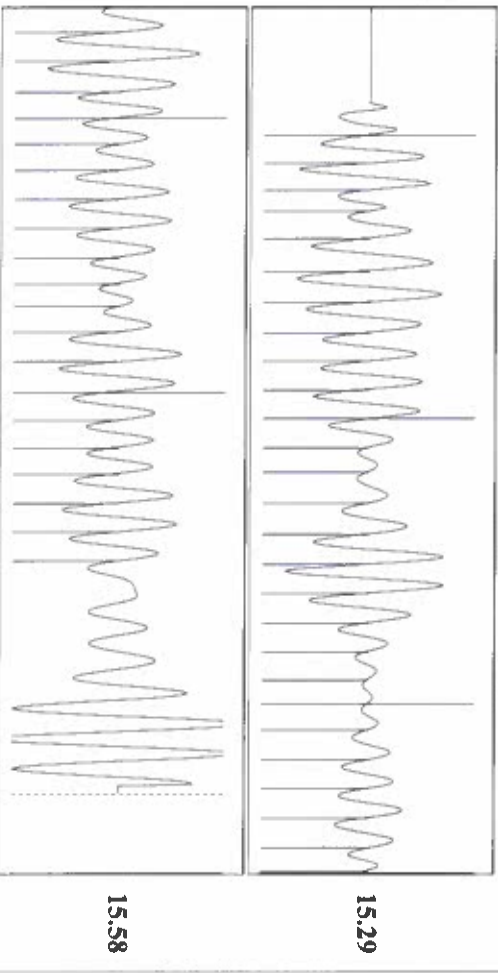


Group: SUBLETTE Well: Hall K-6 (acquired on: 12/14/21 10:47:35)



Change in Pressure -0.02 psi PT16716
 Change in Time 1.00 min Range 0 - 2 psi

Group: SUBLETTE Well: Hall K-6 (acquired on: 12/14/21 10:47:35)



Acoustic Velocity	970.871 ft/s	Joints counted	46
Joints Per Second	15.4155 Jts/sec	Joints to liquid level	58.9028
Depth to liquid level	1854.85 ft	Filler Width	13.015
Automatic Collar Count	Yes	Time to 1st Collar	0.296

December 16, 2021

Katherine McClurkan
Merit Energy Company, LLC
13727 Noel Road, Suite 1200
Dallas, TX 75240

Re: Temporary Abandonment
API 15-081-20223-00-00
Hall K 6
NW/4 Sec.05-29S-34W
Haskell County, Kansas

Dear Katherine McClurkan:

Your application for Temporary Abandonment (TA) for the above-listed well is denied for the following reasons(s):

Shut-in Over 10 years

Pursuant to K.A.R. 82-3-111, the well must be plugged or returned to service by 01/15/2022.

If you wish to instead file an application for an exception to the 10-year limitation of K.A.R. 82-3-111, demonstrating why it is necessary to TA the well for more than 10 years, then you must file the application for an exception by 01/15/2022.

This deadline does NOT override any compliance deadline given to you in any Commission Order.

You may contact me if you have any questions.

Sincerely,
Michael Maier
KCC DISTRICT 1