

KANSAS CORPORATION COMMISSION
OIL & GAS CONSERVATION DIVISION

TEMPORARY ABANDONMENT WELL APPLICATION

OPERATOR: License# _____
 Name: _____
 Address 1: _____
 Address 2: _____
 City: _____ State: _____ Zip: _____ + _____
 Contact Person: _____
 Phone: (_____) _____
 Contact Person Email: _____
 Field Contact Person: _____
 Field Contact Person Phone: (_____) _____

API No. 15- _____
 Spot Description: _____
 _____ - _____ - _____ - _____ Sec. _____ Twp. _____ S. R. _____ E W
 _____ feet from N / S Line of Section
 _____ feet from E / W Line of Section
 GPS Location: Lat: _____, Long: _____
(e.g. xx.xxxxx) (e.g. -xxx.xxxxx)
 Datum: NAD27 NAD83 WGS84
 County: _____ Elevation: _____ GL KB
 Lease Name: _____ Well #: _____
 Well Type: (check one) Oil Gas OG WSW Other: _____
 SWD Permit #: _____ ENHR Permit #: _____
 Gas Storage Permit #: _____
 Spud Date: _____ Date Shut-In: _____

| | Conductor | Surface | Production | Intermediate | Liner | Tubing |
|------------------|-----------|---------|------------|--------------|-------|--------|
| Size | | | | | | |
| Setting Depth | | | | | | |
| Amount of Cement | | | | | | |
| Top of Cement | | | | | | |
| Bottom of Cement | | | | | | |

Casing Fluid Level from Surface: _____ How Determined? _____ Date: _____
 Casing Squeeze(s): _____ to _____ w / _____ sacks of cement, _____ to _____ w / _____ sacks of cement. Date: _____
(top) (bottom) (top) (bottom)
 Do you have a valid Oil & Gas Lease? Yes No
 Depth and Type: Junk in Hole at _____ Tools in Hole at _____ Casing Leaks: Yes No Depth of casing leak(s): _____
(depth) (depth)
 Type Completion: ALT. I ALT. II Depth of: DV Tool: _____ w / _____ sacks of cement Port Collar: _____ w / _____ sack of cement
(depth) (depth)
 Packer Type: _____ Size: _____ Inch Set at: _____ Feet
 Total Depth: _____ Plug Back Depth: _____ Plug Back Method: _____

Geological Data:

| Formation Name | Formation Top | Formation Base | Completion Information |
|----------------|---------------|----------------|--|
| 1. _____ | At: _____ | to _____ Feet | Perforation Interval _____ to _____ Feet or Open Hole Interval _____ to _____ Feet |
| 2. _____ | At: _____ | to _____ Feet | Perforation Interval _____ to _____ Feet or Open Hole Interval _____ to _____ Feet |

UNDER PENALTY OF PERJURY I HEREBY ATTEST THAT THE INFORMATION CONTAINED HEREIN IS TRUE AND CORRECT TO THE BEST OF MY KNOWLEDGE

Submitted Electronically

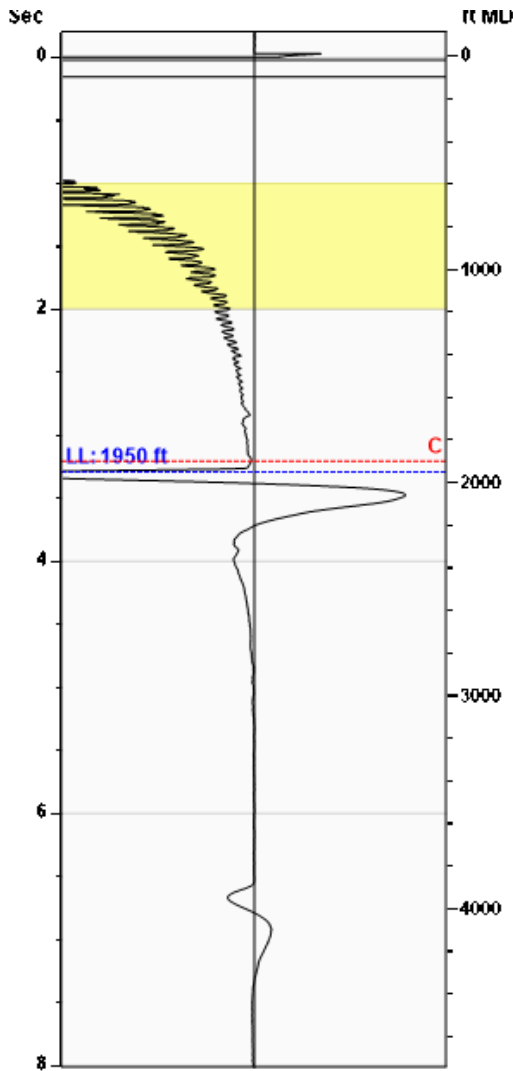
| | | | | | |
|---|--|----------------|---------------------|----------------------|---------------------------------|
| Do NOT Write in This Space - KCC USE ONLY | Date Tested: _____ | Results: _____ | Date Plugged: _____ | Date Repaired: _____ | Date Put Back in Service: _____ |
| | Review Completed by: _____ Comments: _____ | | | | |
| TA Approved: <input type="checkbox"/> Yes <input type="checkbox"/> Denied Date: _____ | | | | | |

Mail to the Appropriate KCC Conservation Office:

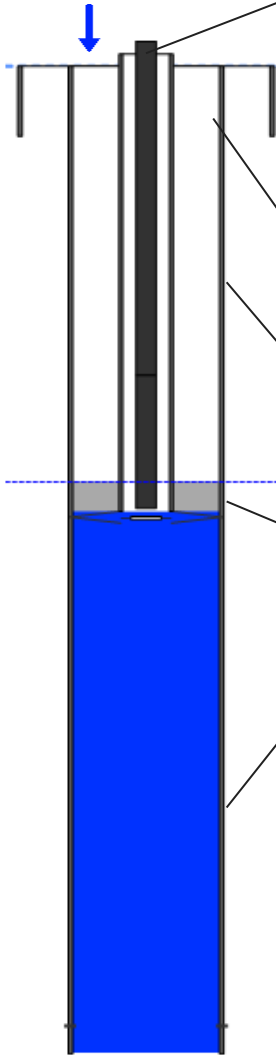
| | | |
|--|--|--------------------|
|  | KCC District Office #1 - 210 E. Frontview, Suite A, Dodge City, KS 67801 | Phone 620.682.7933 |
| | KCC District Office #2 - 3450 N. Rock Road, Building 600, Suite 601, Wichita, KS 67226 | Phone 316.337.7400 |
| | KCC District Office #3 - 137 E. 21st St., Chanute, KS 66720 | Phone 620.902.6450 |
| | KCC District Office #4 - 2301 E. 13th Street, Hays, KS 67601-2651 | Phone 785.261.6250 |

Liquid Level 1950 ft MD

Fluid Above Pump 170 ft TVD
 Equivalent Gas Free Above Pump 170 ft TVD



Gun - WG 1402



| Production | | | |
|----------------------|---------|-----------|----------|
| Date Entered | | | 02/21/16 |
| | Current | Potential | |
| Oil | 12 | ** | BBL/D |
| Water | 150 | ** | BBL/D |
| Gas | ** | ** | Mscf/D |
| IPR Method | | | Vogel |
| PBHP/SBHP | | | 2.32 |
| Producing Efficiency | | | 0.00% |

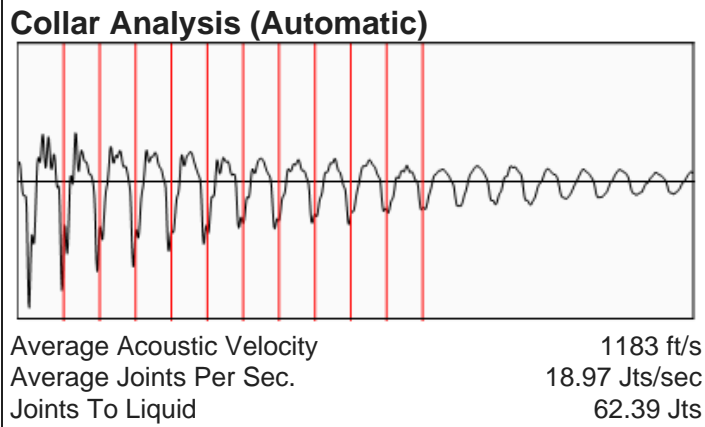
| Casing Pressure | |
|-----------------|--------------|
| Pressure | -0.0 psi (g) |

| Annular Gas Flow | |
|------------------|------------|
| Gas Flow | 0.0 Mscf/D |

| Fluid Properties | |
|---------------------|---------|
| % Liquid Above Pump | 100.00% |
| % Liquid Below Pump | 100.00% |

| Depths | |
|-------------------|---------|
| Pump Intake Depth | 2120 ft |
| Formation Depth | 4526 ft |

| Wellbore Pressures | |
|--------------------|----------------|
| PIP | 63.7 psi (g) |
| PBHP | 1160.1 psi (g) |
| SBHP | 500.0 psi (g) |
| Gas/Liq Interface | 0.8 psi (g) |



Casing Pressure Buildup

No Pressure Acquired

| | |
|--|----------------|
| Casing Pressure | -0.0 psi (g) |
| Buildup | 0.0 psi (g) |
| Buildup Time | 0 sec |
| Gas Gravity from Collar Analysis (Automatic) | 0.7940 Air = 1 |

Comments and Recommendations

Acoustic Test

Petroleum Property Services
 125 N. Market, #1251
 Wichita, KS 67202

Conservation Division
District Office No. 4
2301 E. 13th Street
Hays, KS 67601-2651



Phone: 785-261-6250
Fax: 785-625-0564
<http://kcc.ks.gov/>

Andrew J. French, Chairperson
Dwight D. Keen, Commissioner
Susan K. Duffy, Commissioner

Laura Kelly, Governor

December 22, 2021

CYNDE WOLF
Falcon Exploration, Inc.
125 N MARKET STE 1252
WICHITA, KS 67202-1719

Re: Temporary Abandonment
API 15-063-21671-00-00
STECKEL 2
SW/4 Sec.23-13S-30W
Gove County, Kansas

Dear CYNDE WOLF:

Your application for Temporary Abandonment (TA) for the above-listed well is denied for the following reasons(s):

High Fluid Level

Pursuant to K.A.R. 82-3-111, the well must be plugged, or returned to service, or obtain temporary abandonment status by 01/21/2022.

This deadline does NOT override any compliance deadline given to you in any Commission Order.

You may contact me if you have any questions.

Sincerely,
RICHARD WILLIAMS
KCC DISTRICT 4