

KANSAS CORPORATION COMMISSION
OIL & GAS CONSERVATION DIVISION

Form must be Typed
Form must be signed

TEMPORARY ABANDONMENT WELL APPLICATION

All blanks must be complete

OPERATOR: License#
Name:
Address 1:
Address 2:
City: State: Zip:
Contact Person:
Phone:
Contact Person Email:
Field Contact Person:
Field Contact Person Phone:

API No. 15-
Spot Description:
Sec. Twp. S. R.
feet from N / S Line of Section
feet from E / W Line of Section
GPS Location: Lat: , Long:
Datum: NAD27 NAD83 WGS84
County: Elevation: GL KB
Lease Name: Well #:
Well Type: (check one) Oil Gas OG WSW Other:
SWD Permit #: ENHR Permit #:
Gas Storage Permit #:
Spud Date: Date Shut-In:

Table with 7 columns: Conductor, Surface, Production, Intermediate, Liner, Tubing. Rows include Size, Setting Depth, Amount of Cement, Top of Cement, Bottom of Cement.

Casing Fluid Level from Surface: How Determined? Date:
Casing Squeeze(s): to w / sacks of cement, to w / sacks of cement. Date:
Do you have a valid Oil & Gas Lease? Yes No
Depth and Type: Junk in Hole at Tools in Hole at Casing Leaks: Yes No Depth of casing leak(s):
Type Completion: ALT. I ALT. II Depth of: DV Tool: w / sacks of cement Port Collar: w / sack of cement
Packer Type: Size: Inch Set at: Feet
Total Depth: Plug Back Depth: Plug Back Method:

Geological Date:

Table with 4 columns: Formation Name, Formation Top, Formation Base, Completion Information. Rows 1 and 2.

UNDER PENALTY OF PERJURY I HEREBY ATTEST THAT THE INFORMATION CONTAINED HEREIN IS TRUE AND CORRECT TO THE BEST OF MY KNOWLEDGE

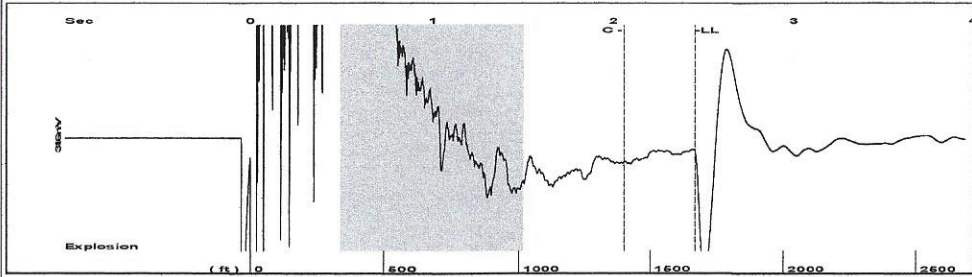
Submitted Electronically

Do NOT Write in This Space - KCC USE ONLY
Date Tested: Results: Date Plugged: Date Repaired: Date Put Back in Service:
Review Completed by: Comments:
TA Approved: Yes Denied Date:

Mail to the Appropriate KCC Conservation Office:

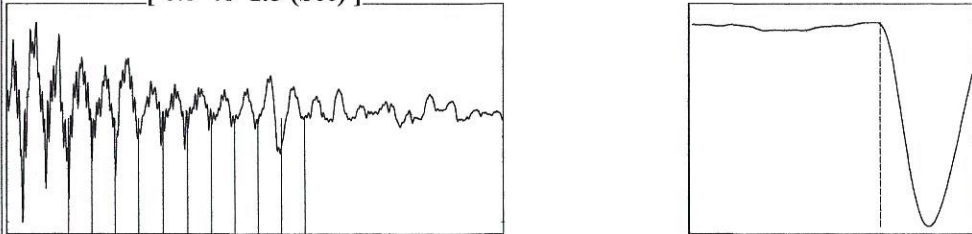
Table with 3 columns: District Office, Address, Phone. Rows for District Office #1, #2, #3, #4.

Group: Belpre Well: Miller 6-13 (acquired on: 12/13/21 10:15:02)



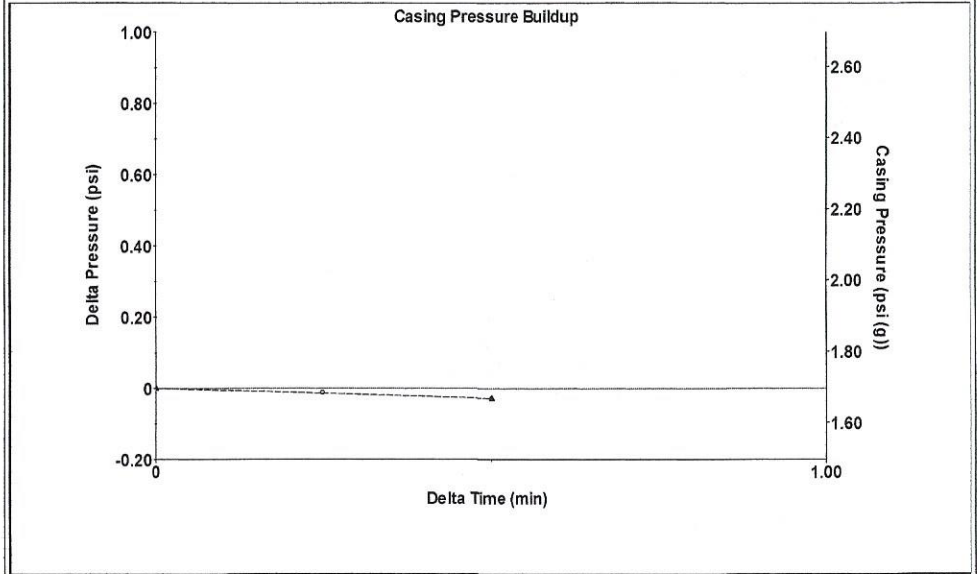
Filter Type High Pass Automatic Collar Count Yes Time 2.455 sec
 Manual Acoustic Velo 1343.22 ft/s Manual JTS/sec 21.1864 Joints 52.6467 Jts
 Depth 1668.90 ft

[0.5 to 1.5 (Sec)]



Analysis Method: Automatic

Group: Belpre Well: Miller 6-13 (acquired on: 12/13/21 10:15:02)



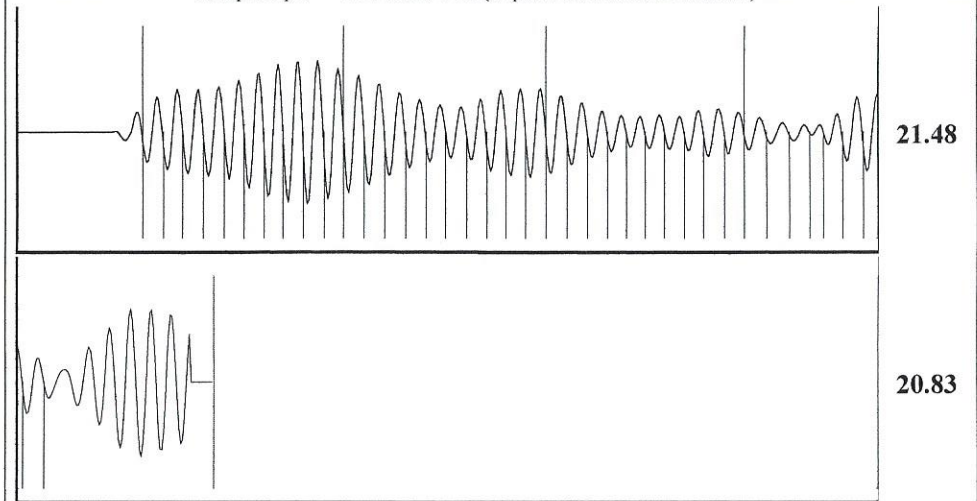
Change in Pressure -0.03 psi PT13440
 Range 0 - ? psi
 Change in Time 0.50 min

Group: Belpre Well: Miller 6-13 (acquired on: 12/13/21 10:15:02)

Production Current	Potential	Casing Pressure	Producing
Oil -*-	-* - BBL/D	1.7 psi (g)	
Water -*-	-* - BBL/D	Casing Pressure Buildup	Annular Gas Flow
Gas -*-	-* - Mscf/D	-0.029 psi	0 Mscf/D
		0.50 min	% Liquid
IPR Method	Vogel	Gas/Liquid Interface Pressure	100 %
PBHP/SBHP	-* -	2.3 psi (g)	
Production Efficiency	0.0		
Oil 40 deg.API		Liquid Level Depth	
Water 1.05 Sp.Gr.H2O		1668.90 ft	
Gas 0.65 Sp.Gr.AIR		Pump Intake Depth	
		-* - ft	
Acoustic Velocity	1359.59 ft/s	Formation Depth	
		2350.00 ft	
Formation Submergence		Pump Intake	
Total Gaseous Liquid Column HT (TVD)	681 ft	-* - psi (g)	
Equivalent Gas Free Liquid HT (TVD)	681 ft	Producing BHP	
		312.0 psi (g)	
Acoustic Test		Static BHP	
		-* - psi (g)	



Group: Belpre Well: Miller 6-13 (acquired on: 12/13/21 10:15:02)



Acoustic Velocity 1359.59 ft/s Joints counted 38
 Joints Per Second 21.4447 jts/sec Joints to liquid level 52.6467
 Depth to liquid level 1668.9 ft Filter Width 19.1864 23.1864
 Automatic Collar Count Yes Time to 1st Collar 0.288 2.06

December 23, 2021

Loveness Mpanje
F. G. Holl Company L.L.C.
9431 E CENTRAL STE 100
WICHITA, KS 67206-2563

Re: Temporary Abandonment
API 15-047-21474-00-00
MILLER 6-13
SW/4 Sec.13-24S-17W
Edwards County, Kansas

Dear Loveness Mpanje:

"Your temporary abandonment (TA) application for the well listed above has been approved. In accordance with K.A.R. 82-3-111 the TA status of this well will expire 04/30/2012.

- * If you return this well to service or plug it, please notify the District Office.
- * If you sell this well you are required to file a Transfer of Operator form, T-1.
- * If the well will remain temporarily abandoned, you must submit a new TA application, CP-111, before 04/30/2012.

You may contact me at the number above if you have questions.

Very truly yours,

Michael Maier"