

KANSAS CORPORATION COMMISSION
OIL & GAS CONSERVATION DIVISION

TEMPORARY ABANDONMENT WELL APPLICATION

OPERATOR: License#
Name:
Address 1:
Address 2:
City: State: Zip:
Contact Person:
Phone:
Contact Person Email:
Field Contact Person:
Field Contact Person Phone:

API No. 15-
Spot Description:
Sec. Twp. S. R.
GPS Location: Lat, Long
Datum: NAD27, NAD83, WGS84
County: Elevation:
Lease Name: Well #:
Well Type: Oil, Gas, OG, WSW, Other
SWD Permit #: ENHR Permit #:
Gas Storage Permit #:
Spud Date: Date Shut-In:

Table with 7 columns: Conductor, Surface, Production, Intermediate, Liner, Tubing. Rows include Size, Setting Depth, Amount of Cement, Top of Cement, Bottom of Cement.

Casing Fluid Level from Surface: How Determined? Date:
Casing Squeeze(s): to w / sacks of cement, to w / sacks of cement. Date:
Do you have a valid Oil & Gas Lease? Yes No
Depth and Type: Junk in Hole at Tools in Hole at Casing Leaks: Yes No Depth of casing leak(s):
Type Completion: ALT. I ALT. II Depth of: DV Tool: w / sacks of cement Port Collar: w / sack of cement
Packer Type: Size: Inch Set at: Feet
Total Depth: Plug Back Depth: Plug Back Method:

Geological Date:

Table with 4 columns: Formation Name, Formation Top, Formation Base, Completion Information. Rows 1 and 2.

UNDER PENALTY OF PERJURY I HEREBY ATTEST THAT THE INFORMATION CONTAINED HEREIN IS TRUE AND CORRECT TO THE BEST OF MY KNOWLEDGE

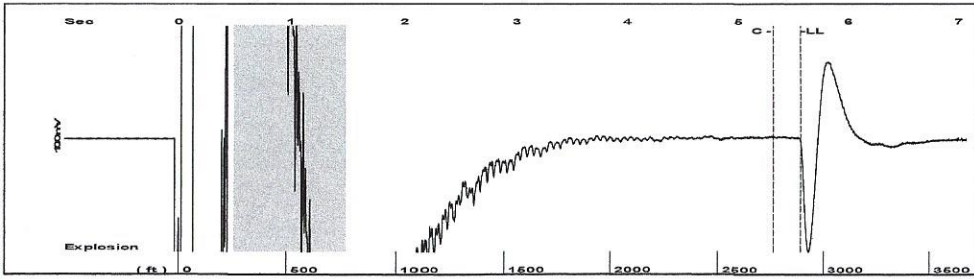
Submitted Electronically

Form with fields: Do NOT Write in This Space - KCC USE ONLY, Date Tested, Results, Date Plugged, Date Repaired, Date Put Back in Service, Review Completed by, Comments, TA Approved: Yes Denied, Date.

Mail to the Appropriate KCC Conservation Office:

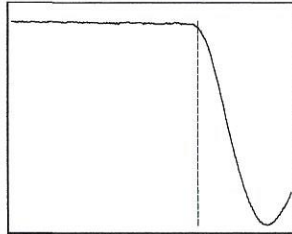
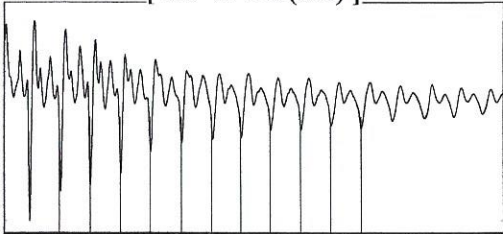
Table with 3 columns: District Office #, Address, Phone. Rows 1-4.

Group: Belpre Well: Enlow-Miller 6-11 (acquired on: 12/14/21 11:27:41)



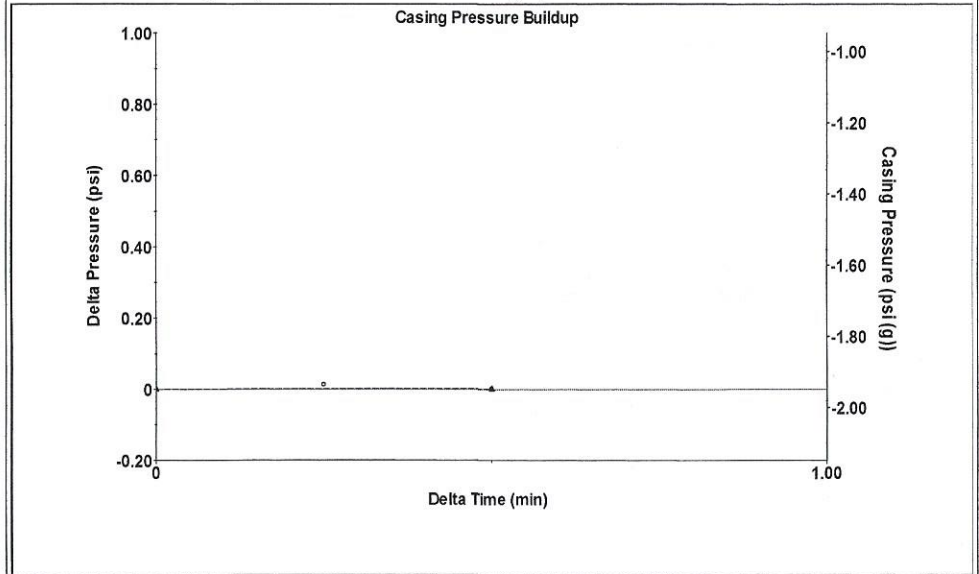
Filter Type High Pass Automatic Collar Count Yes Time 5.561 sec
 Manual Acoustic Velo 1039.27 ft/s Manual JTS/sec 16.5017 Joints 91.7985 Jts
 Depth 2890.74 ft

[0.5 to 1.5 (Sec)]



Analysis Method: Automatic

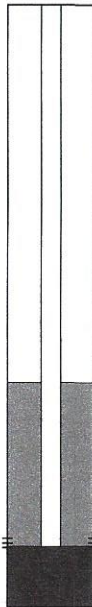
Group: Belpre Well: Enlow-Miller 6-11 (acquired on: 12/14/21 11:27:41)



Change in Pressure 0.00 psi PT13440
 Range 0 - ? psi
 Change in Time 0.50 min

Group: Belpre Well: Enlow-Miller 6-11 (acquired on: 12/14/21 11:27:41)

Production Current	Potential	Casing Pressure
Oil - * -	- * - BBL/D	-1.9 psi (g)
Water - * -	- * - BBL/D	Casing Pressure Buildup
Gas - * -	- * - Mscf/D	0.001 psi
		0.50 min
IPR Method	Vogel	Gas/Liquid Interface Pressure
PBHP/SBHP	- * -	-0.7 psi (g)
Production Efficiency	0.0	
Oil 40 deg.API		Liquid Level Depth
Water 1.05 Sp.Gr.H2O		2890.74 ft
Gas 0.94 Sp.Gr.AIR		Pump Intake Depth
		4378.00 ft
Acoustic Velocity	1039.65 ft/s	Formation Depth
		4344.00 ft

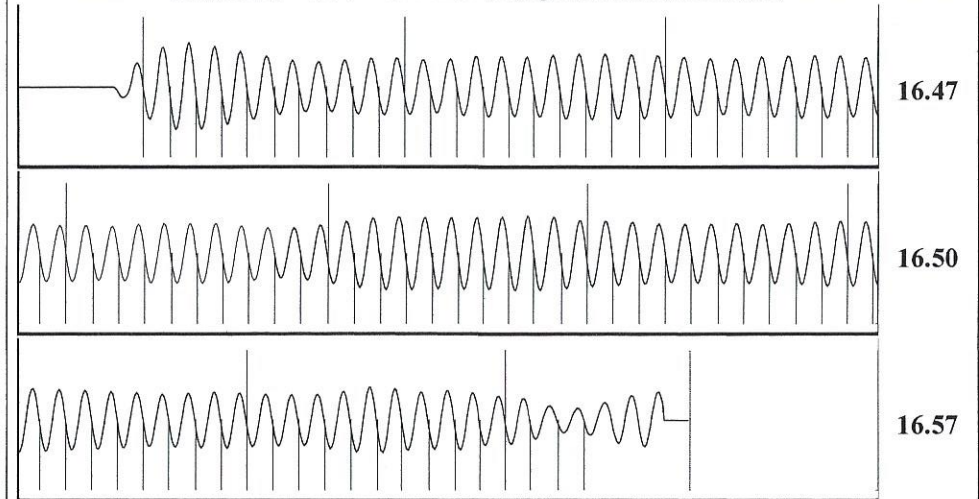


Producing	Annular Gas Flow	0 Mscf/D
	% Liquid	100 %
Pump Intake	499.8 psi (g)	
Producing BHP	488.8 psi (g)	
Static BHP	- * - psi (g)	

Formation Submergence
 Total Gaseous Liquid Column HT (TVD) 1487 ft
 Equivalent Gas Free Liquid HT (TVD) 1487 ft

Acoustic Test

Group: Belpre Well: Enlow-Miller 6-11 (acquired on: 12/14/21 11:27:41)



Acoustic Velocity	1039.65 ft/s	Joints counted	83
Joints Per Second	16.5076 jts/sec	Joints to liquid level	91.7985
Depth to liquid level	2890.74 ft	Filter Width	14.5017 18.5017
Automatic Collar Count	Yes	Time to 1st Collar	0.288 5.316

Conservation Division
District Office No. 1
210 E. Frontview, Suite A
Dodge City, KS 67801



Phone: 620-682-7933
<http://kcc.ks.gov/>

Andrew J. French, Chairperson
Dwight D. Keen, Commissioner
Susan K. Duffy, Commissioner

Laura Kelly, Governor

December 23, 2021

Loveness Mpanje
F. G. Holl Company L.L.C.
9431 E CENTRAL STE 100
WICHITA, KS 67206-2563

Re: Temporary Abandonment
API 15-047-21251-00-00
ENLOW-MILLER 6-11
SE/4 Sec.11-24S-17W
Edwards County, Kansas

Dear Loveness Mpanje:

"Your temporary abandonment (TA) application for the well listed above has been approved. In accordance with K.A.R. 82-3-111 the TA status of this well will expire 12/23/2022.

- * If you return this well to service or plug it, please notify the District Office.
- * If you sell this well you are required to file a Transfer of Operator form, T-1.
- * If the well will remain temporarily abandoned, you must submit a new TA application, CP-111, before 12/23/2022.

You may contact me at the number above if you have questions.

Very truly yours,

Michael Maier"