

KANSAS CORPORATION COMMISSION
OIL & GAS CONSERVATION DIVISION

TEMPORARY ABANDONMENT WELL APPLICATION

OPERATOR: License#
Name:
Address 1:
Address 2:
City: State: Zip:
Contact Person:
Phone:
Contact Person Email:
Field Contact Person:
Field Contact Person Phone:

API No. 15-
Spot Description:
Sec. Twp. S. R.
GPS Location: Lat: Long:
Datum: NAD27 NAD83 WGS84
County: Elevation:
Lease Name: Well #:
Well Type: Oil Gas OG WSW Other:
SWD Permit #: ENHR Permit #:
Gas Storage Permit #:
Spud Date: Date Shut-In:

Table with 7 columns: Conductor, Surface, Production, Intermediate, Liner, Tubing. Rows include Size, Setting Depth, Amount of Cement, Top of Cement, Bottom of Cement.

Casing Fluid Level from Surface: How Determined? Date:
Casing Squeeze(s): to w / sacks of cement, to w / sacks of cement. Date:
Do you have a valid Oil & Gas Lease? Yes No
Depth and Type: Junk in Hole at Tools in Hole at Casing Leaks: Yes No Depth of casing leak(s):
Type Completion: ALT. I ALT. II Depth of: DV Tool: w / sacks of cement Port Collar: w / sack of cement
Packer Type: Size: Inch Set at: Feet
Total Depth: Plug Back Depth: Plug Back Method:

Geological Date:

Table with 4 columns: Formation Name, Formation Top, Formation Base, Completion Information. Rows 1 and 2.

UNDER PENALTY OF PERJURY I HEREBY ATTEST THAT THE INFORMATION CONTAINED HEREIN IS TRUE AND CORRECT TO THE BEST OF MY KNOWLEDGE

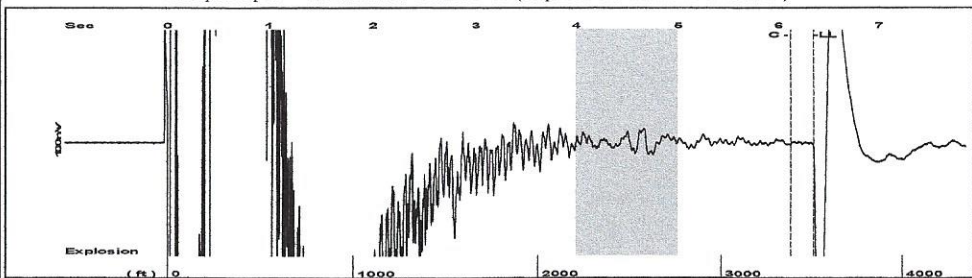
Submitted Electronically

Do NOT Write in This Space - KCC USE ONLY
Date Tested: Results: Date Plugged: Date Repaired: Date Put Back in Service:
Review Completed by: Comments:
TA Approved: Yes Denied Date:

Mail to the Appropriate KCC Conservation Office:

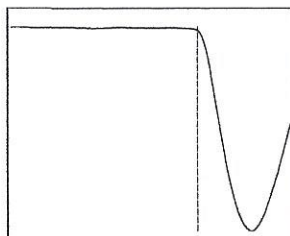
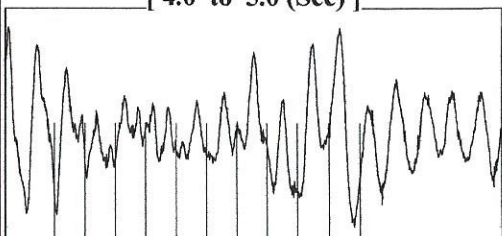
Table with 2 columns: Office Address, Phone. Rows for District Office #1, #2, #3, #4.

Group: Belpre Well: Enlow-Miller 2-11 (acquired on: 12/13/21 13:20:18 )



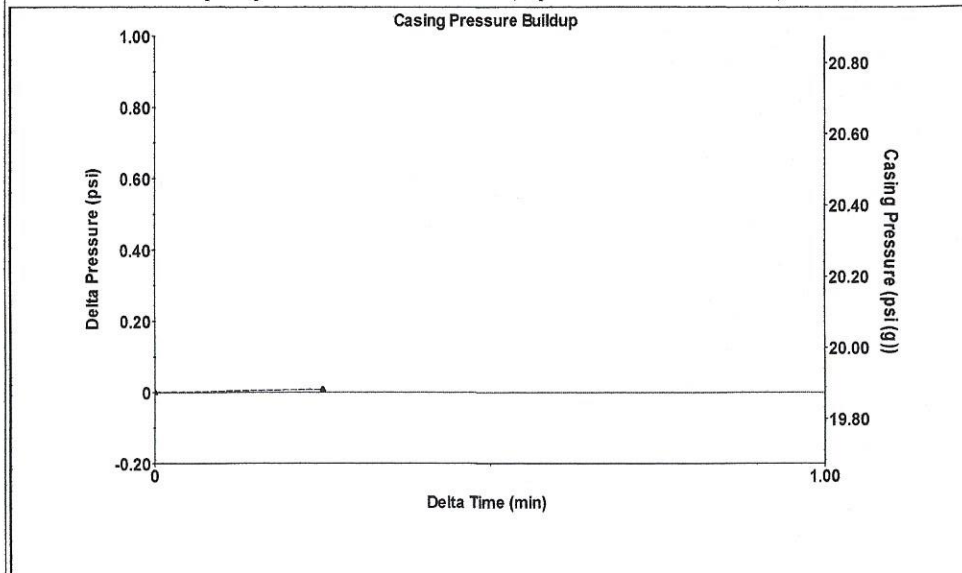
Filter Type High Pass Automatic Collar Count Yes Time 6.347 sec  
 Manual Acoustic Veloc 1026.3 ft/s Manual JTS/sec 16.2338 Joints 111.117 Jts  
 Depth 3512.41 ft

[ 4.0 to 5.0 (Sec) ]



Analysis Method: Automatic

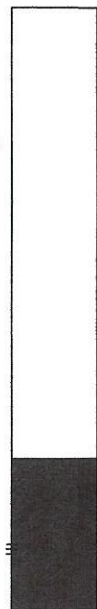
Group: Belpre Well: Enlow-Miller 2-11 (acquired on: 12/13/21 13:20:18 )



Change in Pressure 0.01 psi PT13440  
 Range 0 - ? psi  
 Change in Time 0.25 min

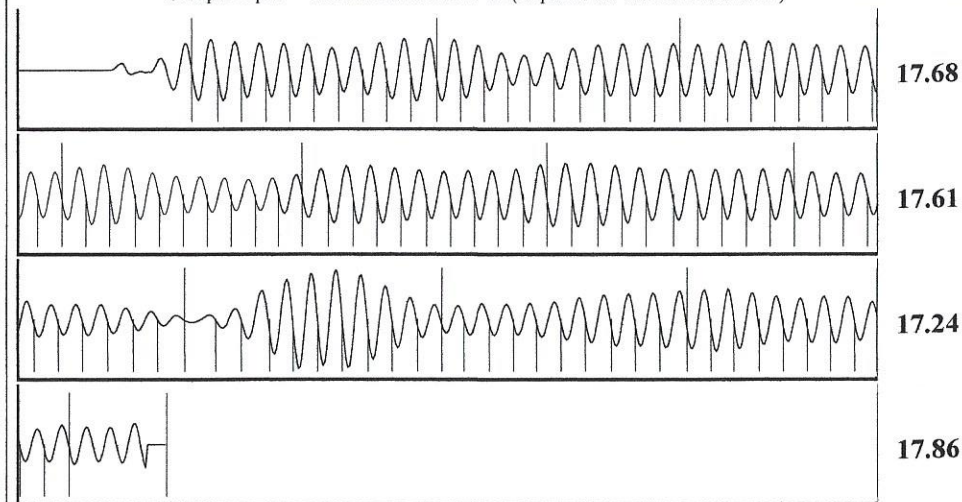
Group: Belpre Well: Enlow-Miller 2-11 (acquired on: 12/13/21 13:20:18 )

Production		Casing Pressure	19.9 psi (g)
Current	Potential	Casing Pressure Buildup	0.008 psi
Oil -*-	-*- BBL/D	0.25 min	
Water -*-	-*- BBL/D	Gas/Liquid Interface Pressure	-*- psi (g)
Gas -*-	-*- Mscf/D		
IPR Method	Vogel	Liquid Level Depth	3512.41 ft
PBHP/SBHP	-*-	Pump Intake Depth	4300.00 ft
Production Efficiency	0.0	Formation Depth	4340.00 ft
Oil 40 deg.API			
Water 1.05 Sp.Gr.H2O			
Gas 0.88 Sp.Gr.AIR			
Acoustic Velocity	1106.79 ft/s		
Formation Submergence			
Total Gaseous Liquid Column HT (TVD)	-*- ft		
Equivalent Gas Free Liquid HT (TVD)	-*- ft		
Acoustic Test			



Producing  
 Annular Gas Flow -\*- Mscf/D  
 % Liquid 100 %  
 Pump Intake -\*- psi (g)  
 Producing BHP -\*- psi (g)  
 Static BHP -\*- psi (g)

Group: Belpre Well: Enlow-Miller 2-11 (acquired on: 12/13/21 13:20:18 )



Acoustic Velocity	1106.79 ft/s	Joints counted	100
Joints Per Second	17.507 jts/sec	Joints to liquid level	111.117
Depth to liquid level	3512.41 ft	Filter Width	14.2338 18.2338
Automatic Collar Count	Yes	Time to 1st Collar	0.404 6.116

December 23, 2021

Loveness Mpanje  
F. G. Holl Company L.L.C.  
9431 E CENTRAL STE 100  
WICHITA, KS 67206-2563

Re: Temporary Abandonment  
API 15-047-20983-00-00  
ENLOW-MILLER 2-11  
SE/4 Sec.11-24S-17W  
Edwards County, Kansas

Dear Loveness Mpanje:

"Your temporary abandonment (TA) application for the well listed above has been approved. In accordance with K.A.R. 82-3-111 the TA status of this well will expire 12/23/2022.

- \* If you return this well to service or plug it, please notify the District Office.
- \* If you sell this well you are required to file a Transfer of Operator form, T-1.
- \* If the well will remain temporarily abandoned, you must submit a new TA application, CP-111, before 12/23/2022.

You may contact me at the number above if you have questions.

Very truly yours,

Michael Maier"