

KANSAS CORPORATION COMMISSION
OIL & GAS CONSERVATION DIVISION

TEMPORARY ABANDONMENT WELL APPLICATION

OPERATOR: License#
Name:
Address 1:
Address 2:
City: State: Zip:
Contact Person:
Phone:
Contact Person Email:
Field Contact Person:
Field Contact Person Phone:

API No. 15-
Spot Description:
Sec. Twp. S. R.
feet from N / S Line of Section
feet from E / W Line of Section
GPS Location: Lat: , Long:
Datum: NAD27 NAD83 WGS84
County: Elevation: GL KB
Lease Name: Well #:
Well Type: Oil Gas OG WSW Other:
SWD Permit #: ENHR Permit #:
Gas Storage Permit #:
Spud Date: Date Shut-In:

Table with 7 columns: Conductor, Surface, Production, Intermediate, Liner, Tubing. Rows include Size, Setting Depth, Amount of Cement, Top of Cement, Bottom of Cement.

Casing Fluid Level from Surface: How Determined? Date:
Casing Squeeze(s): to w / sacks of cement, to w / sacks of cement. Date:
Do you have a valid Oil & Gas Lease? Yes No
Depth and Type: Junk in Hole at Tools in Hole at Casing Leaks: Yes No Depth of casing leak(s):
Type Completion: ALT. I ALT. II Depth of: DV Tool: w / sacks of cement Port Collar: w / sack of cement
Packer Type: Size: Inch Set at: Feet
Total Depth: Plug Back Depth: Plug Back Method:

Geological Data:

Table with 4 columns: Formation Name, Formation Top, Formation Base, Completion Information. Rows 1 and 2.

UNDER PENALTY OF PERJURY I HEREBY ATTEST THAT THE INFORMATION CONTAINED HEREIN IS TRUE AND CORRECT TO THE BEST OF MY KNOWLEDGE

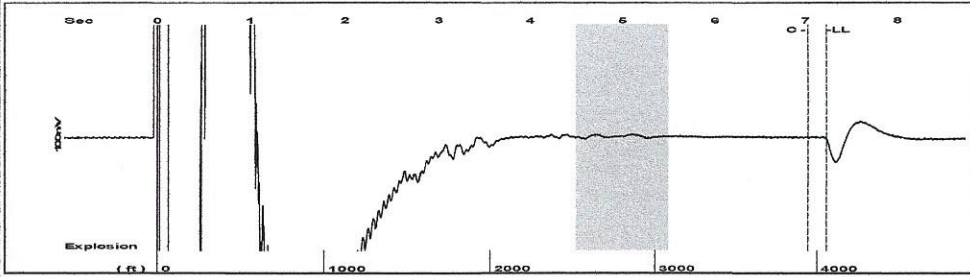
Submitted Electronically

Do NOT Write in This Space - KCC USE ONLY
Date Tested: Results: Date Plugged: Date Repaired: Date Put Back in Service:
Review Completed by: Comments:
TA Approved: Yes Denied Date:

Mail to the Appropriate KCC Conservation Office:

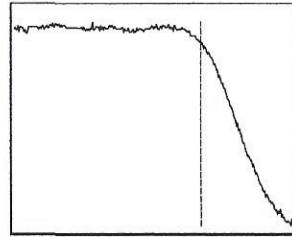
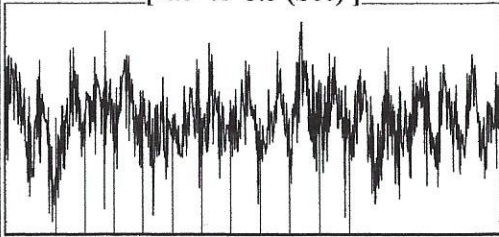
Table with 3 columns: District Office, Address, Phone. Rows for District Office #1, #2, #3, #4.

Group: Belpre Well: Schartz 3-12 (acquired on: 12/13/21 12:52:05)



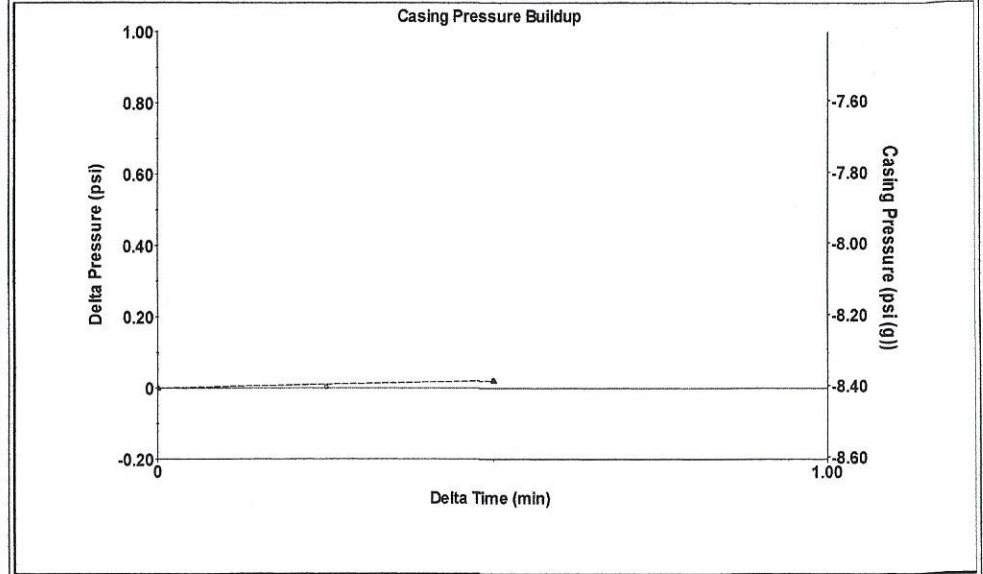
Filter Type High Pass Automatic Collar Count Yes Time 7.225 sec  
 Manual Acoustic Velo1064.42 ft/s Manual JTS/sec 16.8634 Joints 128.559 Jts  
 Depth 4057.31 ft

[ 4.5 to 5.5 (Sec) ]



Analysis Method: Automatic

Group: Belpre Well: Schartz 3-12 (acquired on: 12/13/21 12:52:05)



Change in Pressure 0.02 psi PT13440  
 Range 0 - ? psi  
 Change in Time 0.50 min

Group: Belpre Well: Schartz 3-12 (acquired on: 12/13/21 12:52:05)

Production  
 Current Potential  
 Oil - \* - \* - BBL/D  
 Water - \* - \* - BBL/D  
 Gas - \* - \* - Mscf/D

IPR Method Vogel  
 PBHP/SBHP - \* -  
 Production Efficiency 0.0

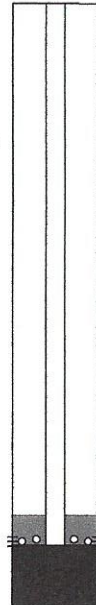
Oil 40 deg.API  
 Water 1.05 Sp.Gr.H2O  
 Gas 0.87 Sp.Gr.AIR

Acoustic Velocity 1123.13 ft/s

Formation Submergence  
 Total Gaseous Liquid Column HT (TVD) 269 ft  
 Equivalent Gas Free Liquid HT (TVD) 254 ft

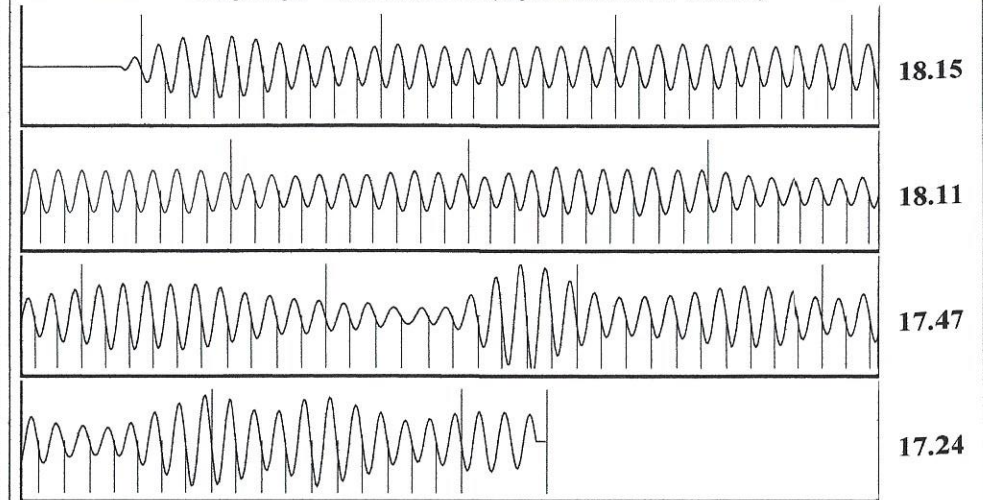
Acoustic Test

Casing Pressure -8.4 psi (g)  
 Casing Pressure Buildup 0.020 psi  
 0.50 min  
 Gas/Liquid Interface Pressure -7.6 psi (g)  
 Liquid Level Depth 4057.31 ft  
 Pump Intake Depth 4326.00 ft  
 Formation Depth 4291.00 ft



Producing  
 Annular Gas Flow 1 Mscf/D  
 % Liquid 94 %  
 Pump Intake 79.0 psi (g)  
 Producing BHP 67.1 psi (g)  
 Static BHP - \* - psi (g)

Group: Belpre Well: Schartz 3-12 (acquired on: 12/13/21 12:52:05)



Acoustic Velocity 1123.13 ft/s Joints counted 120  
 Joints Per Second 17.7936 jts/sec Joints to liquid level 128.559  
 Depth to liquid level 4057.31 ft Filter Width 14.8634 18.8634  
 Automatic Collar Count Yes Time to 1st Collar 0.28 7.024

Conservation Division  
District Office No. 1  
210 E. Frontview, Suite A  
Dodge City, KS 67801



Phone: 620-682-7933  
<http://kcc.ks.gov/>

Andrew J. French, Chairperson  
Dwight D. Keen, Commissioner  
Susan K. Duffy, Commissioner

Laura Kelly, Governor

December 23, 2021

Loveness Mpanje  
F. G. Holl Company L.L.C.  
9431 E CENTRAL STE 100  
WICHITA, KS 67206-2563

Re: Temporary Abandonment  
API 15-047-20959-00-00  
SCHARTZ 3-12  
SE/4 Sec.12-24S-17W  
Edwards County, Kansas

Dear Loveness Mpanje:

"Your temporary abandonment (TA) application for the well listed above has been approved. In accordance with K.A.R. 82-3-111 the TA status of this well will expire 12/23/2022.

- \* If you return this well to service or plug it, please notify the District Office.
- \* If you sell this well you are required to file a Transfer of Operator form, T-1.
- \* If the well will remain temporarily abandoned, you must submit a new TA application, CP-111, before 12/23/2022.

You may contact me at the number above if you have questions.

Very truly yours,

Michael Maier"