

KANSAS CORPORATION COMMISSION
OIL & GAS CONSERVATION DIVISION

TEMPORARY ABANDONMENT WELL APPLICATION

OPERATOR: License#
Name:
Address 1:
Address 2:
City: State: Zip:
Contact Person:
Phone:
Contact Person Email:
Field Contact Person:
Field Contact Person Phone:

API No. 15-
Spot Description:
Sec. Twp. S. R.
GPS Location: Lat: Long:
Datum: NAD27 NAD83 WGS84
County: Elevation:
Lease Name: Well #:
Well Type: Oil Gas OG WSW Other:
SWD Permit #: ENHR Permit #:
Gas Storage Permit #:
Spud Date: Date Shut-In:

Table with 7 columns: Conductor, Surface, Production, Intermediate, Liner, Tubing. Rows include Size, Setting Depth, Amount of Cement, Top of Cement, Bottom of Cement.

Casing Fluid Level from Surface: How Determined? Date:
Casing Squeeze(s): to w / sacks of cement, to w / sacks of cement. Date:
Do you have a valid Oil & Gas Lease? Yes No
Depth and Type: Junk in Hole at Tools in Hole at Casing Leaks: Yes No Depth of casing leak(s):
Type Completion: ALT. I ALT. II Depth of: DV Tool: w / sacks of cement Port Collar: w / sack of cement
Packer Type: Size: Inch Set at: Feet
Total Depth: Plug Back Depth: Plug Back Method:

Geological Data:

Table with 4 columns: Formation Name, Formation Top, Formation Base, Completion Information. Rows 1 and 2.

UNDER PENALTY OF PERJURY I HEREBY ATTEST THAT THE INFORMATION CONTAINED HEREIN IS TRUE AND CORRECT TO THE BEST OF MY KNOWLEDGE

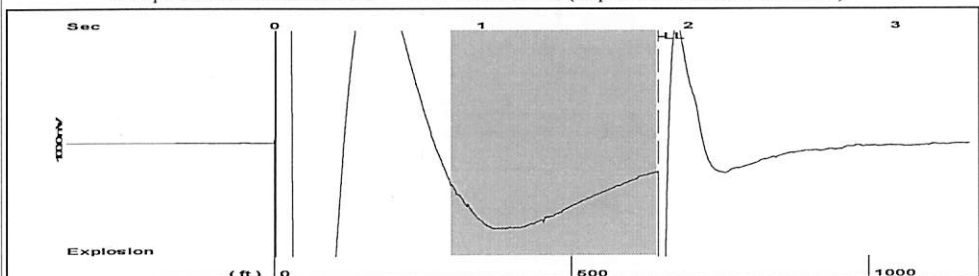
Submitted Electronically

Do NOT Write in This Space - KCC USE ONLY
Date Tested: Results: Date Plugged: Date Repaired: Date Put Back in Service:
Review Completed by: Comments:
TA Approved: Yes Denied Date:

Mail to the Appropriate KCC Conservation Office:

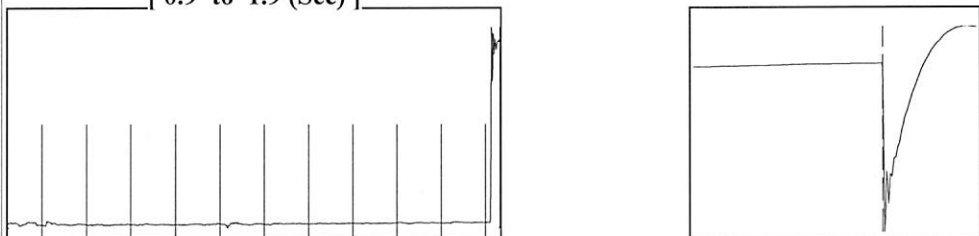
Table with 2 columns: Office Address, Phone. Rows for District Office #1, #2, #3, #4.

Group: Northern Kansas District Well: BEMIS A-17 (acquired on: 12/22/21 07:29:11)



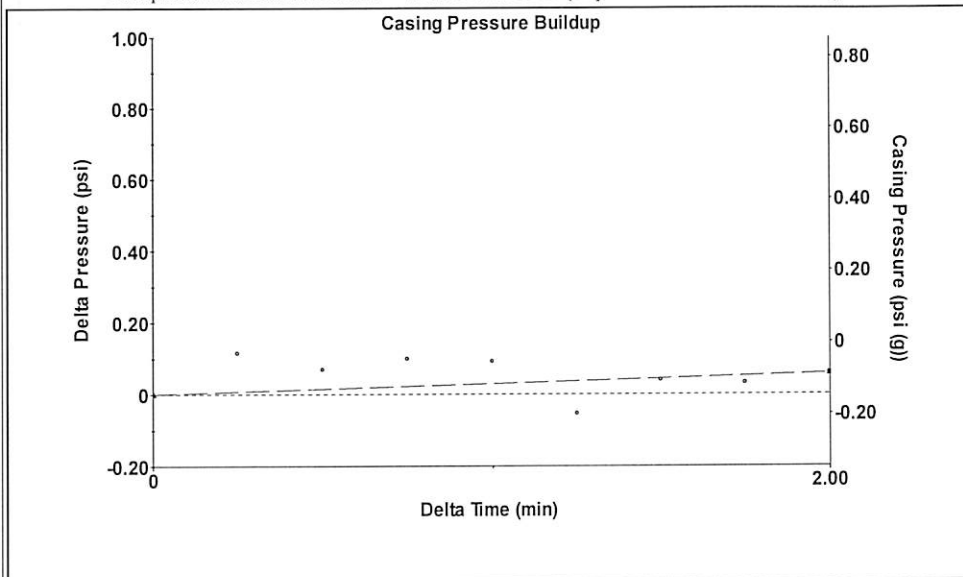
Filter Type High Pass Automatic Collar Count Yes Time 1.854 sec
 Manual Acoustic Velo 696.781 ft/s Manual JTS/sec 11.0988 Joints 20.5771 Jts
 Depth 645.92 ft

[0.9 to 1.9 (Sec)]



Analysis Method: Automatic

Group: Northern Kansas District Well: BEMIS A-17 (acquired on: 12/22/21 07:29:11)



Change in Pressure 0.06 psi PT 8139
 Change in Time 2.00 min Range 0 - ? psi

Group: Northern Kansas District Well: BEMIS A-17 (acquired on: 12/22/21 07:29:11)

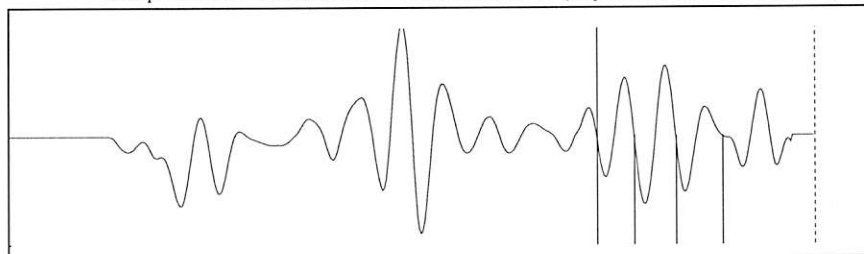
| | | | |
|-----------------------|--------------|-------------------------------|---------------------|
| Production Current | Potential | Casing Pressure | Static |
| Oil 6.5 | - * - BBL/D | -0.1 psi (g) | |
| Wa1 130.34 | - * - BBL/D | Casing Pressure Buildup | Oil Column Height |
| Gas - * - | - * - Mscf/D | 0.058 psi | MD 16 ft |
| | | 2.00 min | |
| IPR Method | Vogel | Gas/Liquid Interface Pressure | Water Column Height |
| PBHP/SBHP | - * - | 0.3 psi (g) | MD 2707 ft |
| Production Efficiency | 0.0 | | |
| Oil 40 deg.API | | Liquid Level Depth | |
| Water 1.05 Sp.Gr.H2O | | 645.92 ft | |
| Gas 1.25 Sp.Gr.AIR | | Pump Intake Depth | |
| | | 3390.00 ft | |
| Acoustic Velocity | 696.781 ft/s | Formation Depth | |
| | | 3374.00 ft | |



Acoustic Test

Static BHP
1236.3 psi (g)

Group: Northern Kansas District Well: BEMIS A-17 (acquired on: 12/22/21 07:29:11)



| | | | |
|------------------------|---------------|------------------------|-----------------|
| Acoustic Velocity | - * - ft/s | Joints counted | 3 |
| Joints Per Second | - * - jts/sec | Joints to liquid level | - * - |
| Depth to liquid level | - * - ft | Filter Width | 9.09878 13.0988 |
| Automatic Collar Count | Yes | Time to 1st Collar | - * - |

Conservation Division
District Office No. 4
2301 E. 13th Street
Hays, KS 67601-2651



Phone: 785-261-6250
Fax: 785-625-0564
<http://kcc.ks.gov/>

Andrew J. French, Chairperson
Dwight D. Keen, Commissioner
Susan K. Duffy, Commissioner

Laura Kelly, Governor

December 23, 2021

Jerry Wirtz
E & B Natural Resources Management Corp.
2501 280TH AVE
HAYS, KS 67601-9598

Re: Temporary Abandonment
API 15-051-24762-00-00
FA BEMIS A 17
NE/4 Sec.28-11S-17W
Ellis County, Kansas

Dear Jerry Wirtz:

Your application for Temporary Abandonment (TA) for the above-listed well is denied for the following reasons(s):

High Fluid Level

Pursuant to K.A.R. 82-3-111, the well must be plugged, or returned to service, or obtain temporary abandonment status by 01/22/2022.

This deadline does NOT override any compliance deadline given to you in any Commission Order.

You may contact me if you have any questions.

Sincerely,
RICHARD WILLIAMS
KCC DISTRICT 4