

KANSAS CORPORATION COMMISSION
OIL & GAS CONSERVATION DIVISION

TEMPORARY ABANDONMENT WELL APPLICATION

OPERATOR: License#
Name:
Address 1:
Address 2:
City: State: Zip:
Contact Person:
Phone:
Contact Person Email:
Field Contact Person:
Field Contact Person Phone:

API No. 15-
Spot Description:
Sec. Twp. S. R.
feet from N / S Line of Section
feet from E / W Line of Section
GPS Location: Lat: , Long:
Datum: NAD27 NAD83 WGS84
County: Elevation: GL KB
Lease Name: Well #:
Well Type: (check one) Oil Gas OG WSW Other:
SWD Permit #: ENHR Permit #:
Gas Storage Permit #:
Spud Date: Date Shut-In:

Table with 7 columns: Conductor, Surface, Production, Intermediate, Liner, Tubing. Rows include Size, Setting Depth, Amount of Cement, Top of Cement, Bottom of Cement.

Casing Fluid Level from Surface: How Determined? Date:
Casing Squeeze(s): to w / sacks of cement, to w / sacks of cement. Date:
Do you have a valid Oil & Gas Lease? Yes No
Depth and Type: Junk in Hole at Tools in Hole at Casing Leaks: Yes No Depth of casing leak(s):
Type Completion: ALT. I ALT. II Depth of: DV Tool: w / sacks of cement Port Collar: w / sack of cement
Packer Type: Size: Inch Set at: Feet
Total Depth: Plug Back Depth: Plug Back Method:

Geological Date:

Table with 4 columns: Formation Name, Formation Top, Formation Base, Completion Information. Rows 1 and 2.

UNDER PENALTY OF PERJURY I HEREBY ATTEST THAT THE INFORMATION CONTAINED HEREIN IS TRUE AND CORRECT TO THE BEST OF MY KNOWLEDGE

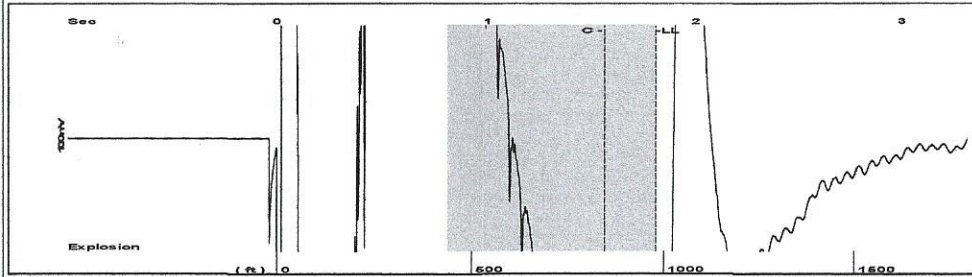
Submitted Electronically

Do NOT Write in This Space - KCC USE ONLY
Date Tested: Results: Date Plugged: Date Repaired: Date Put Back in Service:
Review Completed by: Comments:
TA Approved: Yes Denied Date:

Mail to the Appropriate KCC Conservation Office:

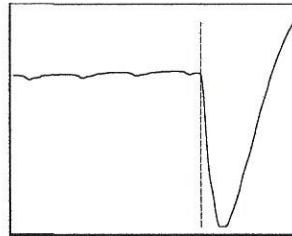
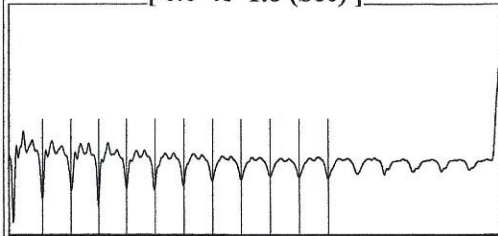
Table with 2 columns: Office Address, Phone. Rows for KCC District Office #1, #2, #3, #4.

Group: Radium Well: FleskePeterson unit 1-2 (acquired on: 12/16/21 12:10:34)



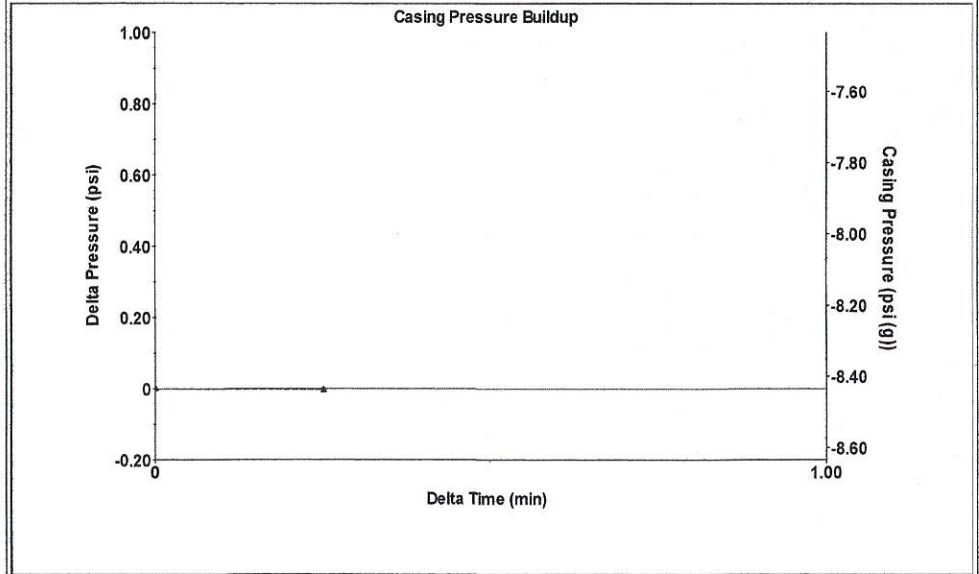
Filter Type High Pass Automatic Collar Count Yes Time 1.809 sec
 Manual Acoustic Velo 1086.21 ft/s Manual JTS/sec 17.2414 Joints 31.0922 Jts
 Depth 979.40 ft

[0.8 to 1.8 (Sec)]



Analysis Method: Automatic

Group: Radium Well: FleskePeterson unit 1-2 (acquired on: 12/16/21 12:10:34)



Change in Pressure -0.00 psi PT13440
 Change in Time 0.25 min Range 0 - ? psi

Group: Radium Well: FleskePeterson unit 1-2 (acquired on: 12/16/21 12:10:34)

Production
 Current Potential
 Oil - * - * - BBL/D
 Water - * - * - BBL/D
 Gas - * - * - Mscf/D

IPR Method Vogel
 PBHP/SBHP - * -
 Production Efficiency 0.0

Oil 40 deg.API
 Water 1.05 Sp.Gr.H2O
 Gas 0.89 Sp.Gr.AIR

Acoustic Velocity 1082.81 ft/s

Formation Submergence
 Total Gaseous Liquid Column HT (TVD) 2801 ft
 Equivalent Gas Free Liquid HT (TVD) 2801 ft

Acoustic Test

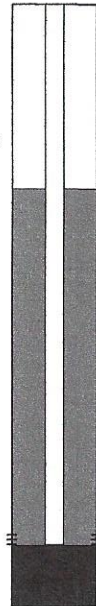
Casing Pressure -8.4 psi (g)
 Casing Pressure Buildup -0.004 psi
 0.25 min
 Gas/Liquid Interface Pressure -8.2 psi (g)

Liquid Level Depth 979.40 ft

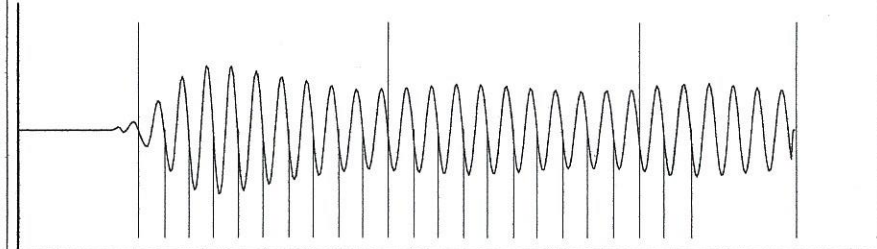
Pump Intake Depth 3780.00 ft
 Formation Depth 3737.00 ft

Producing
 Annular Gas Flow 0 Mscf/D
 % Liquid 100 %

Pump Intake 917.0 psi (g)
 Producing BHP 903.7 psi (g)
 Static BHP - * - psi (g)



Group: Radium Well: FleskePeterson unit 1-2 (acquired on: 12/16/21 12:10:34)



Acoustic Velocity 1082.81 ft/s Joints counted 22
 Joints Per Second 17.1875 jts/sec Joints to liquid level 31.0922
 Depth to liquid level 979.404 ft Filter Width 15.2414 19.2414
 Automatic Collar Count Yes Time to 1st Collar 0.28 1.56

December 23, 2021

Loveness Mpanje
F. G. Holl Company L.L.C.
9431 E CENTRAL STE 100
WICHITA, KS 67206-2563

Re: Temporary Abandonment
API 15-145-21624-00-00
FLESKE/PETERSON UNIT 1-2
SW/4 Sec.02-20S-16W
Pawnee County, Kansas

Dear Loveness Mpanje:

Your application for Temporary Abandonment (TA) for the above-listed well is denied for the following reasons(s):

Shut-in Over 10 years

Pursuant to K.A.R. 82-3-111, the well must be plugged or returned to service by 01/22/2022.

If you wish to instead file an application for an exception to the 10-year limitation of K.A.R. 82-3-111, demonstrating why it is necessary to TA the well for more than 10 years, then you must file the application for an exception by 01/22/2022.

This deadline does NOT override any compliance deadline given to you in any Commission Order.

You may contact me if you have any questions.

Sincerely,
Michael Maier
KCC DISTRICT 1