

KANSAS CORPORATION COMMISSION
OIL & GAS CONSERVATION DIVISION

TEMPORARY ABANDONMENT WELL APPLICATION

OPERATOR: License#
Name:
Address 1:
Address 2:
City: State: Zip:
Contact Person:
Phone:
Contact Person Email:
Field Contact Person:
Field Contact Person Phone:

API No. 15-
Spot Description:
Sec. Twp. S. R.
GPS Location: Lat: Long:
Datum: NAD27 NAD83 WGS84
County: Elevation:
Lease Name: Well #:
Well Type: Oil Gas OG WSW Other:
SWD Permit #: ENHR Permit #:
Gas Storage Permit #:
Spud Date: Date Shut-In:

Table with 7 columns: Conductor, Surface, Production, Intermediate, Liner, Tubing. Rows include Size, Setting Depth, Amount of Cement, Top of Cement, Bottom of Cement.

Casing Fluid Level from Surface: How Determined? Date:
Casing Squeeze(s): to w / sacks of cement, to w / sacks of cement. Date:
Do you have a valid Oil & Gas Lease? Yes No
Depth and Type: Junk in Hole at Tools in Hole at Casing Leaks: Yes No Depth of casing leak(s):
Type Completion: ALT. I ALT. II Depth of: DV Tool: w / sacks of cement Port Collar: w / sack of cement
Packer Type: Size: Inch Set at: Feet
Total Depth: Plug Back Depth: Plug Back Method:

Geological Data:

Table with 4 columns: Formation Name, Formation Top, Formation Base, Completion Information. Rows 1 and 2.

UNDER PENALTY OF PERJURY I HEREBY ATTEST THAT THE INFORMATION CONTAINED HEREIN IS TRUE AND CORRECT TO THE BEST OF MY KNOWLEDGE

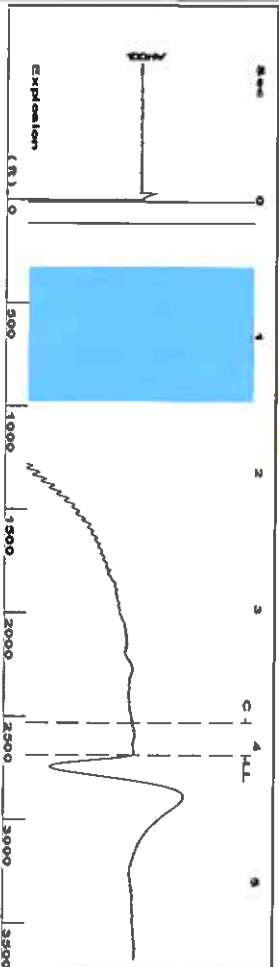
Submitted Electronically

Do NOT Write in This Space - KCC USE ONLY
Date Tested: Results: Date Plugged: Date Repaired: Date Put Back in Service:
Review Completed by: Comments:
TA Approved: Yes Denied Date:

Mail to the Appropriate KCC Conservation Office:

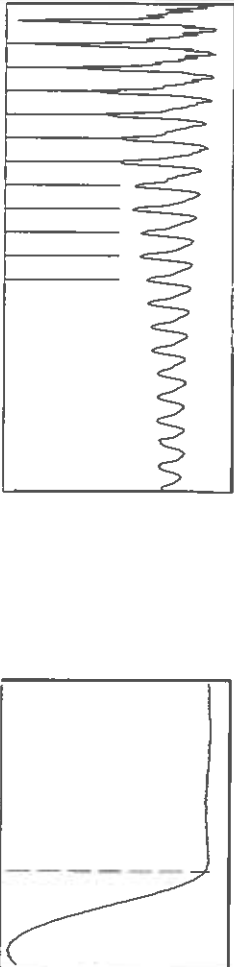
Table with 2 columns: Office Address, Phone. Rows for District Office #1, #2, #3, #4.

Group: T.A/D Well: fretz a-2 (acquired on: 12/28/21 15:14:55)



Filter Type: High Pass  
 Manual Acoustic Velocity: 1309.92 ft/s  
 Automatic Collar Count: Yes  
 Manual JTS/sec: 20.6612  
 Time: 4.072 sec  
 Joints: 84.7353 Jts  
 Depth: 2686.11 ft

0.5 to 1.5 (Sec)



Analysis Method: Automatic

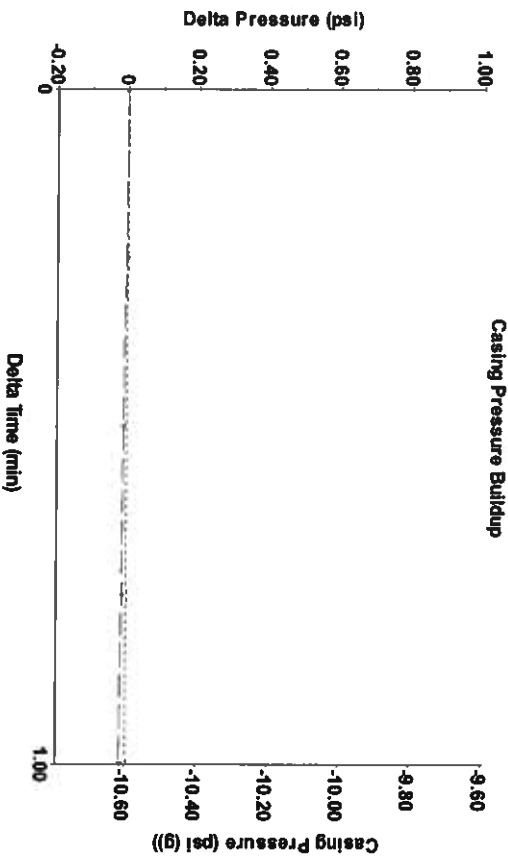
Group: T.A/D Well: fretz a-2 (acquired on: 12/28/21 15:14:55)

<b>Production</b>	<b>Potential</b>	<b>Casing Pressure</b>	<b>Producing</b>
Oil: -*- Water: -*- Gas: -*-	BBL/D: -*- BBL/D: -*- Mscf/D: -*-	-10.6 psi (g) Casing Pressure Buildup: -0.017 psi 1.00 min	Annular Gas Flow: 0 Mscf/D % Liquid: 100 %
IPR Method: PBHP/SBHP Production Efficiency: 0.0	Vogel: -*-	Gas/Liquid Interface Pressure: -10.3 psi (g)	Liquid Stream Below Tubing: Oil 0 % Water 100 %
Oil: 40 deg API Water: 1.05 Sp.Gr. H2O Gas: 0.69 Sp.Gr. AIR	Liquid Level Depth: 2686.11 ft	Liquid Level Depth: 2686.11 ft	Liquid Below Tubing: 100 %
Acoustic Velocity: 1319.31 ft/s	Pump Intake Depth: 3047.00 ft Formation Depth: 3120.00 ft	Pump Intake Depth: 3047.00 ft Formation Depth: 3120.00 ft	Pump Intake: 111.8 psi (g) Producing BHP: 145.0 psi (g) Static BHP: -*- psi (g)

Formation Submergence: Total Gaseous Liquid Column HT (TV/D) 361 ft  
 Equivalent Gas Free Liquid HT (TV/D) 361 ft

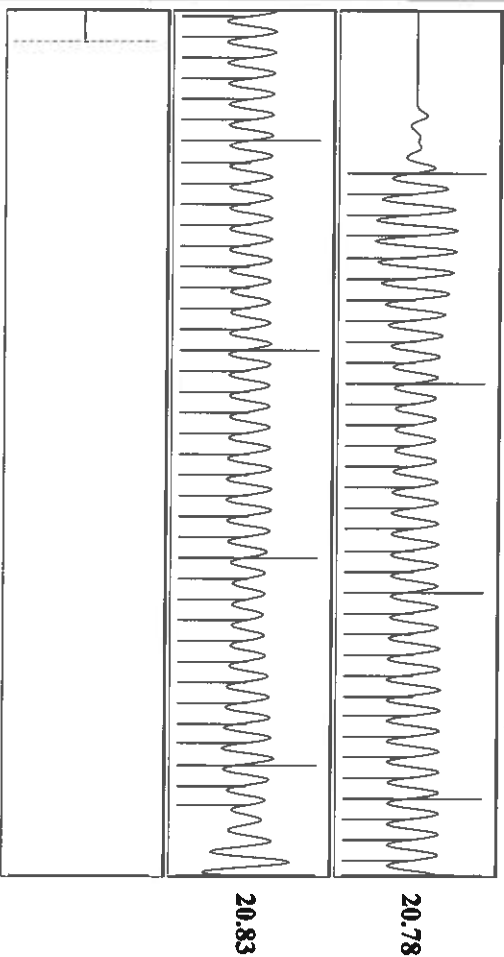
Acoustic Test

Group: T.A/D Well: fretz a-2 (acquired on: 12/28/21 15:14:55)



Change in Pressure: -0.02 psi  
 Change in Time: 1.00 min  
 PT 18868  
 Range: 0 - ? psi

Group: T.A/D Well: fretz a-2 (acquired on: 12/28/21 15:14:55)



Acoustic Velocity: 1319.31 ft/s	Joints counted: 72
Joints Per Second: 20.8092 jts/sec	Joints to liquid level: 84.7353
Depth to liquid level: 2686.11 ft	Filter Width: 18.6612
Automatic Collar Count: Yes	Time to 1st Collar: 0.376
	22.6612
	3.836

December 30, 2021

Katherine McClurkan  
Merit Energy Company, LLC  
13727 Noel Road, Suite 1200  
Dallas, TX 75240

Re: Temporary Abandonment  
API 15-067-20369-00-00  
Fretz A 2  
NE/4 Sec.31-27S-35W  
Grant County, Kansas

Dear Katherine McClurkan:

"Your temporary abandonment (TA) application for the well listed above has been approved. In accordance with K.A.R. 82-3-111 the TA status of this well will expire 12/30/2022.

- \* If you return this well to service or plug it, please notify the District Office.
- \* If you sell this well you are required to file a Transfer of Operator form, T-1.
- \* If the well will remain temporarily abandoned, you must submit a new TA application, CP-111, before 12/30/2022.

You may contact me at the number above if you have questions.

Very truly yours,

Michael Maier"