

KANSAS CORPORATION COMMISSION
OIL & GAS CONSERVATION DIVISION

TEMPORARY ABANDONMENT WELL APPLICATION

OPERATOR: License#
Name:
Address 1:
Address 2:
City: State: Zip:
Contact Person:
Phone:
Contact Person Email:
Field Contact Person:
Field Contact Person Phone:

API No. 15-
Spot Description:
Sec. Twp. S. R.
GPS Location: Lat: Long:
Datum: NAD27 NAD83 WGS84
County: Elevation:
Lease Name: Well #:
Well Type: Oil Gas OG WSW Other:
SWD Permit #: ENHR Permit #:
Gas Storage Permit #:
Spud Date: Date Shut-In:

Table with 7 columns: Conductor, Surface, Production, Intermediate, Liner, Tubing. Rows include Size, Setting Depth, Amount of Cement, Top of Cement, Bottom of Cement.

Casing Fluid Level from Surface: How Determined? Date:
Casing Squeeze(s): to w / sacks of cement, to w / sacks of cement. Date:
Do you have a valid Oil & Gas Lease? Yes No
Depth and Type: Junk in Hole at Tools in Hole at Casing Leaks: Yes No Depth of casing leak(s):
Type Completion: ALT. I ALT. II Depth of: DV Tool: w / sacks of cement Port Collar: w / sack of cement
Packer Type: Size: Inch Set at: Feet
Total Depth: Plug Back Depth: Plug Back Method:

Geological Data:

Table with 4 columns: Formation Name, Formation Top, Formation Base, Completion Information. Rows 1 and 2.

UNDER PENALTY OF PERJURY I HEREBY ATTEST THAT THE INFORMATION CONTAINED HEREIN IS TRUE AND CORRECT TO THE BEST OF MY KNOWLEDGE

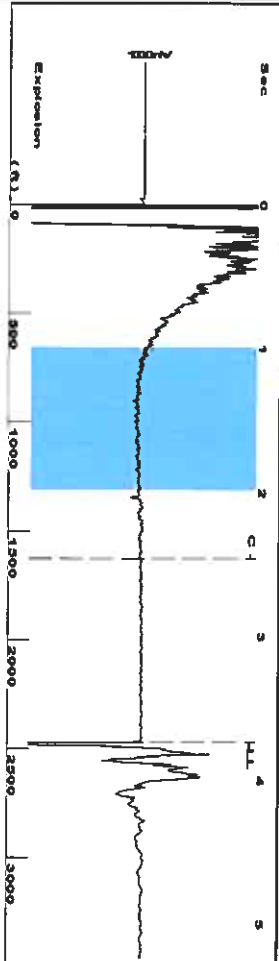
Submitted Electronically

Do NOT Write in This Space - KCC USE ONLY
Date Tested: Results: Date Plugged: Date Repaired: Date Put Back in Service:
Review Completed by: Comments:
TA Approved: Yes Denied Date:

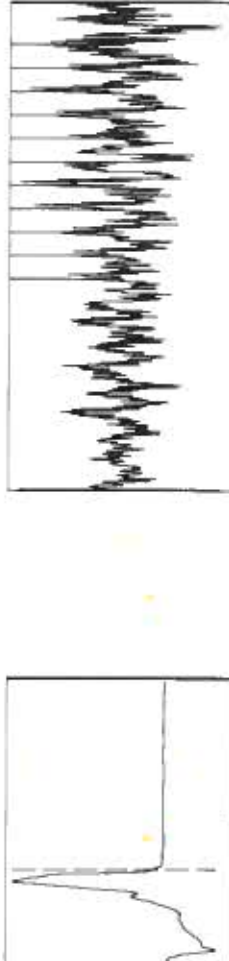
Mail to the Appropriate KCC Conservation Office:

Table with 2 columns: Office Address, Phone. Rows for District Office #1, #2, #3, #4.

Group: TAD Well: Ladrer D-1 (acquired on: 12/29/21 10:47:19)



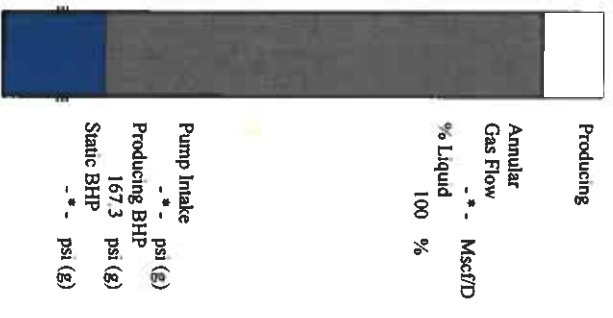
Filter Type: High Pass
 Manual Acoustic Velocity: 1315.35 ft/s
 Automatic Collar Count: Yes
 Manual JTS/sec: 20.7469
 Time: 3.739 sec
 Joints: 77.8958 Jts
 Depth: 2469.30 ft



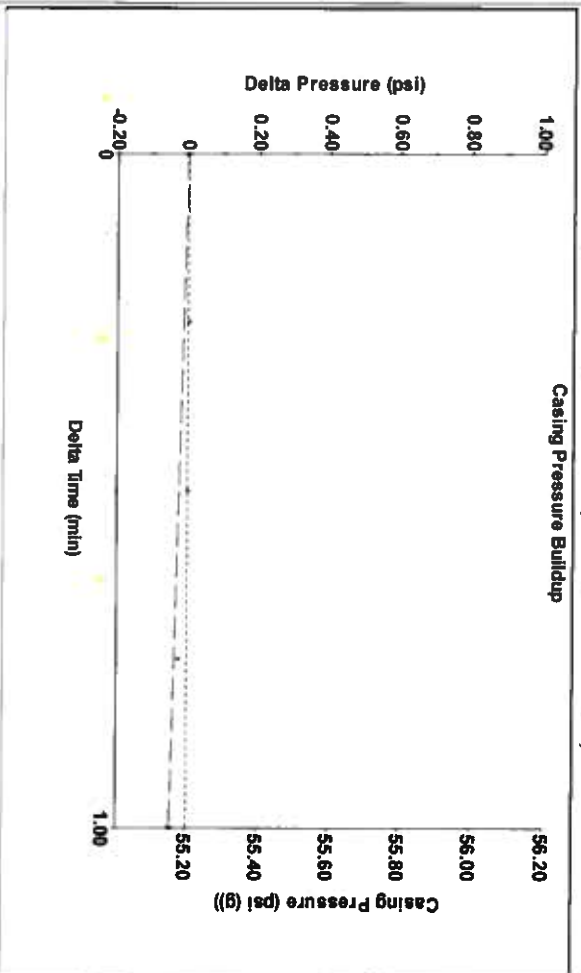
Analysis Method: Automatic

Group: TAD Well: Ladrer D-1 (acquired on: 12/29/21 10:47:19)

Production	Potential	Casing Pressure	Producing
Oil: -*-	BBLD	55.2 psi (g)	Annular
Water: -*-	BBLD	Casing Pressure Buildup	Gas Flow
Gas: -*-	Mscf/D	-0.047 psi	% Liquid
IPR Method	Vogel	1.00 min	% Mscf/D
PBHP/SBHP	0.0	Gas/Liquid Interface Pressure	100 %
Production Efficiency		59.3 psi (g)	
Oil: 40 deg API		Liquid Level Depth	
Water: 1.05 Sp.Gr. H2O		2469.30 ft	
Gas: 0.68 Sp.Gr. AIR		Pump Intake Depth	
Acoustic Velocity	1320.83 ft/s	Formation Depth	
		2707.00 ft	
Formation Submergence			
Total Gaseous Liquid Column HT (TVD)	238 ft		
Equivalent Gas Free Liquid HT (TVD)	238 ft		
Acoustic Test			

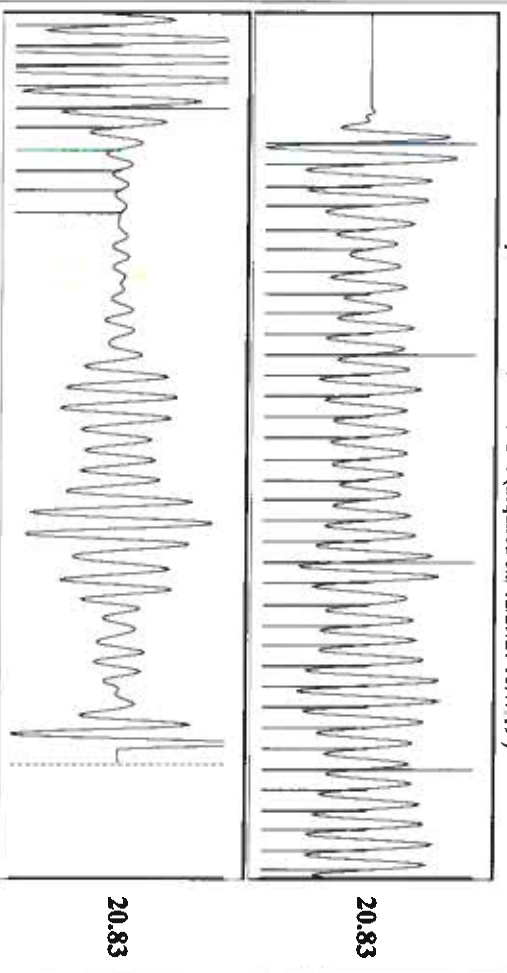


Group: TAD Well: Ladrer D-1 (acquired on: 12/29/21 10:47:19)



Change in Pressure: -0.05 psi
 Change in Time: 1.00 min
 PT: 18868
 Range: 0 - 7 psi

Group: TAD Well: Ladrer D-1 (acquired on: 12/29/21 10:47:19)



Acoustic Velocity: 1320.83 ft/s
 Joints Per Second: 20.8333 Jts/sec
 Depth to liquid level: 2469.3 ft
 Automatic Collar Count: Yes

Joints counted: 45
 Joints to liquid level: 77.8958
 Filter Width: 18.7469
 Time to 1st Collar: 0.3

Conservation Division
District Office No. 1
210 E. Frontview, Suite A
Dodge City, KS 67801



Phone: 620-682-7933
<http://kcc.ks.gov/>

Andrew J. French, Chairperson
Dwight D. Keen, Commissioner
Susan K. Duffy, Commissioner

Laura Kelly, Governor

December 30, 2021

Katherine McClurkan
Merit Energy Company, LLC
13727 Noel Road, Suite 1200
Dallas, TX 75240-7362

Re: Temporary Abandonment
API 15-067-00285-00-00
Lander D (ARCHIE B LADNER A) 1
NE/4 Sec.13-27S-35W
Grant County, Kansas

Dear Katherine McClurkan:

"Your temporary abandonment (TA) application for the well listed above has been approved. In accordance with K.A.R. 82-3-111 the TA status of this well will expire 12/30/2022.

- * If you return this well to service or plug it, please notify the District Office.
- * If you sell this well you are required to file a Transfer of Operator form, T-1.
- * If the well will remain temporarily abandoned, you must submit a new TA application, CP-111, before 12/30/2022.

You may contact me at the number above if you have questions.

Very truly yours,

Michael Maier"