

KANSAS CORPORATION COMMISSION
OIL & GAS CONSERVATION DIVISION

TEMPORARY ABANDONMENT WELL APPLICATION

OPERATOR: License#
Name:
Address 1:
Address 2:
City: State: Zip:
Contact Person:
Phone:
Contact Person Email:
Field Contact Person:
Field Contact Person Phone:

API No. 15-
Spot Description:
Sec. Twp. S. R.
GPS Location: Lat: Long:
Datum: NAD27 NAD83 WGS84
County: Elevation:
Lease Name: Well #:
Well Type: Oil Gas OG WSW Other:
SWD Permit #: ENHR Permit #:
Gas Storage Permit #:
Spud Date: Date Shut-In:

Table with 7 columns: Conductor, Surface, Production, Intermediate, Liner, Tubing. Rows include Size, Setting Depth, Amount of Cement, Top of Cement, Bottom of Cement.

Casing Fluid Level from Surface: How Determined? Date:
Casing Squeeze(s): to w / sacks of cement, to w / sacks of cement. Date:
Do you have a valid Oil & Gas Lease? Yes No
Depth and Type: Junk in Hole at Tools in Hole at Casing Leaks: Yes No Depth of casing leak(s):
Type Completion: ALT. I ALT. II Depth of: DV Tool: w / sacks of cement Port Collar: w / sack of cement
Packer Type: Size: Inch Set at: Feet
Total Depth: Plug Back Depth: Plug Back Method:

Geological Data:

Table with 4 columns: Formation Name, Formation Top, Formation Base, Completion Information. Rows 1 and 2.

UNDER PENALTY OF PERJURY I HEREBY ATTEST THAT THE INFORMATION CONTAINED HEREIN IS TRUE AND CORRECT TO THE BEST OF MY KNOWLEDGE

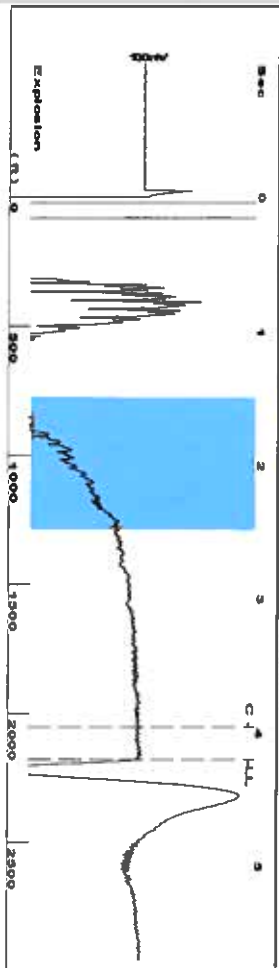
Submitted Electronically

Do NOT Write in This Space - KCC USE ONLY
Date Tested: Results: Date Plugged: Date Repaired: Date Put Back in Service:
Review Completed by: Comments:
TA Approved: Yes Denied Date:

Mail to the Appropriate KCC Conservation Office:

Table with 3 columns: District Office, Address, Phone. Rows for District Office #1, #2, #3, #4.

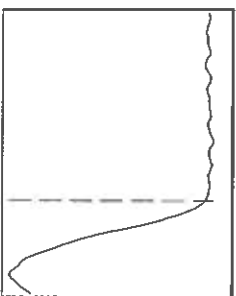
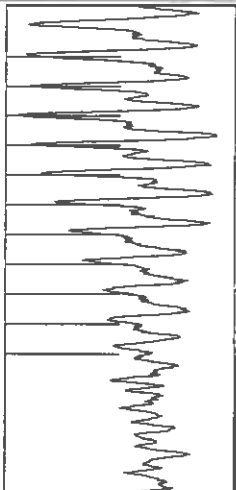
Group: TAD Well: KU 7 (acquired on: 12/29/21 14:51:49)



Filter Type High Pass
Manual Acoustic Velo: 1039.34 f/s
Automatic Collar Count Yes
Manual JTS/sec 16.3934

Time 4.203 sec
Joints 68.6765 Jts
Depth 2177.04 ft

1.5 to 2.5 (Sec)

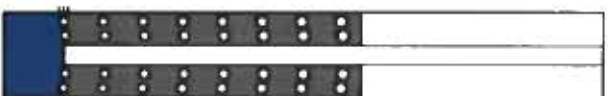


Analysis Method: Automatic

Group: TAD Well: KU 7 (acquired on: 12/29/21 14:51:49)

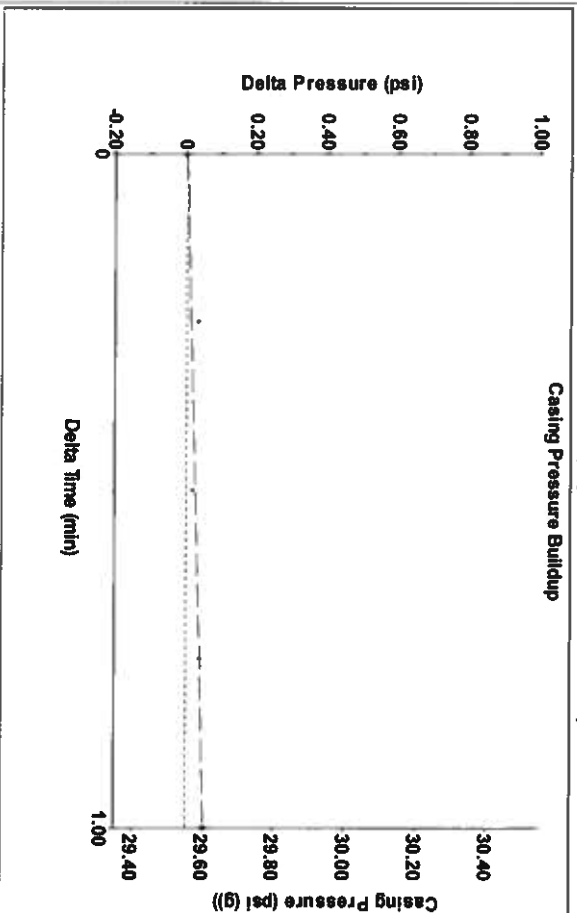
Production Current	Potential	Casing Pressure
Oil -*- BBL/D	29.6 psi (g)	
Water -*- BBL/D	0.052 psi	
Gas -*- Mscf/D	1.00 min	
IPR Method Vogel	Gas/Liquid Interface Pressure	
PBHP/SBHP	32.8 psi (g)	
Production Efficiency 0.0	Liquid Level Depth	
Oil 40 deg API	2177.04 ft	
Water 1.05 Sp.Gr.H2O	Pump Intake Depth	
Gas 0.93 Sp.Gr.AIR	5722.00 ft	
Acoustic Velocity 1035.95 f/s	Formation Depth	
	5728.00 ft	

Formation Submergence
Total Gaseous Liquid Column HT (TVD) 3545 ft
Equivalent Gas Free Liquid HT (TVD) 3399 ft
Acoustic Test



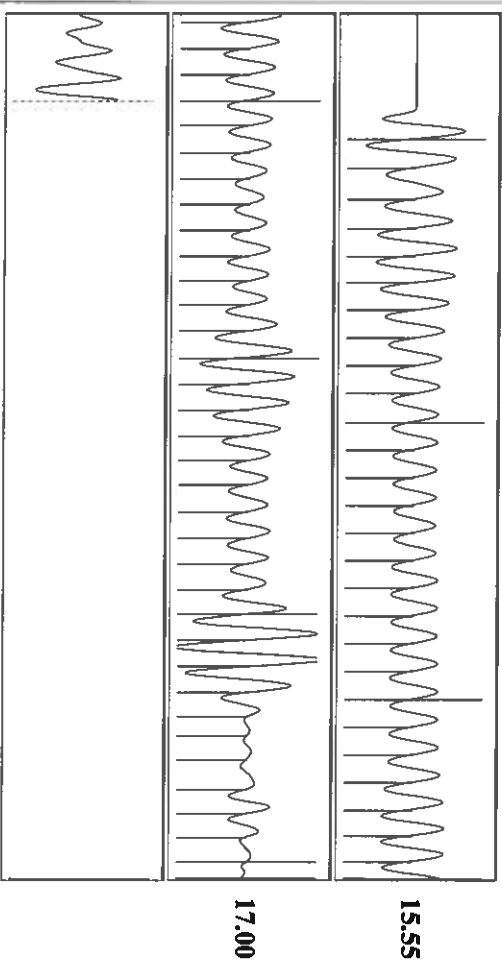
Producing	Liquid Below Tubing
Annular Gas Flow 2 Mscf/D	97 %
% Liquid 96 %	Liquid Stream Below Tubing
Liquid Intake 1134.4 psi (g)	Oil 0 %
Producing BHP 1137.0 psi (g)	Water 100 %
Static BHP -*- psi (g)	

Group: TAD Well: KU 7 (acquired on: 12/29/21 14:51:49)



Change in Pressure 0.05 psi
Change in Time 1.00 min
PT 18868
Range 0 - ? psi

Group: TAD Well: KU 7 (acquired on: 12/29/21 14:51:49)



Acoustic Velocity 1035.95 f/s	Joints counted 60
Joints Per Second 16.3399 Jts/sec	Joints to liquid level 14.3934
Depth to liquid level 2177.04 ft	Filter Width 0.288
Automatic Collar Count Yes	Time to 1st Collar 3.96

Conservation Division
District Office No. 1
210 E. Frontview, Suite A
Dodge City, KS 67801



Phone: 620-682-7933
<http://kcc.ks.gov/>

Andrew J. French, Chairperson
Dwight D. Keen, Commissioner
Susan K. Duffy, Commissioner

Laura Kelly, Governor

December 30, 2021

Katherine McClurkan
Merit Energy Company, LLC
13727 Noel Road, Suite 1200
Dallas, TX 75240

Re: Temporary Abandonment
API 15-187-21099-00-00
KU 7-J20-29-39
SE/4 Sec.20-29S-39W
Stanton County, Kansas

Dear Katherine McClurkan:

"Your temporary abandonment (TA) application for the well listed above has been approved. In accordance with K.A.R. 82-3-111 the TA status of this well will expire 12/30/2022.

- * If you return this well to service or plug it, please notify the District Office.
- * If you sell this well you are required to file a Transfer of Operator form, T-1.
- * If the well will remain temporarily abandoned, you must submit a new TA application, CP-111, before 12/30/2022.

You may contact me at the number above if you have questions.

Very truly yours,

Michael Maier"