

KANSAS CORPORATION COMMISSION
OIL & GAS CONSERVATION DIVISION

TEMPORARY ABANDONMENT WELL APPLICATION

OPERATOR: License#
Name:
Address 1:
Address 2:
City: State: Zip:
Contact Person:
Phone:
Contact Person Email:
Field Contact Person:
Field Contact Person Phone:

API No. 15-
Spot Description:
Sec. Twp. S. R.
feet from N / S Line of Section
feet from E / W Line of Section
GPS Location: Lat: , Long:
Datum: NAD27 NAD83 WGS84
County: Elevation: GL KB
Lease Name: Well #:
Well Type: Oil Gas OG WSW Other:
SWD Permit #: ENHR Permit #:
Gas Storage Permit #:
Spud Date: Date Shut-In:

Table with 7 columns: Conductor, Surface, Production, Intermediate, Liner, Tubing. Rows include Size, Setting Depth, Amount of Cement, Top of Cement, Bottom of Cement.

Casing Fluid Level from Surface: How Determined? Date:
Casing Squeeze(s): to w / sacks of cement, to w / sacks of cement. Date:
Do you have a valid Oil & Gas Lease? Yes No
Depth and Type: Junk in Hole at Tools in Hole at Casing Leaks: Yes No Depth of casing leak(s):
Type Completion: ALT. I ALT. II Depth of: DV Tool: w / sacks of cement Port Collar: w / sack of cement
Packer Type: Size: Inch Set at: Feet
Total Depth: Plug Back Depth: Plug Back Method:

Geological Data:

Table with 4 columns: Formation Name, Formation Top, Formation Base, Completion Information. Rows 1 and 2.

UNDER PENALTY OF PERJURY I HEREBY ATTEST THAT THE INFORMATION CONTAINED HEREIN IS TRUE AND CORRECT TO THE BEST OF MY KNOWLEDGE

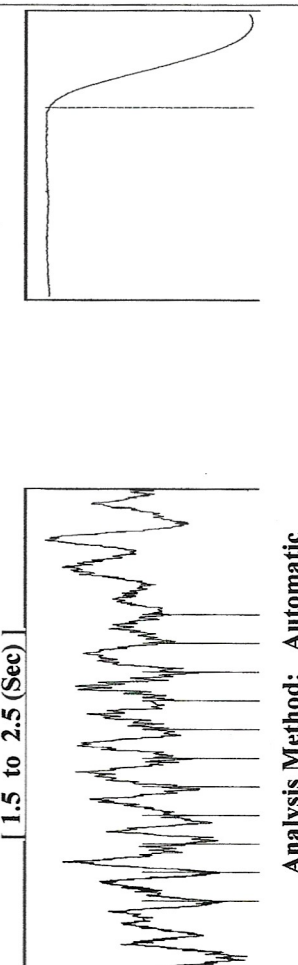
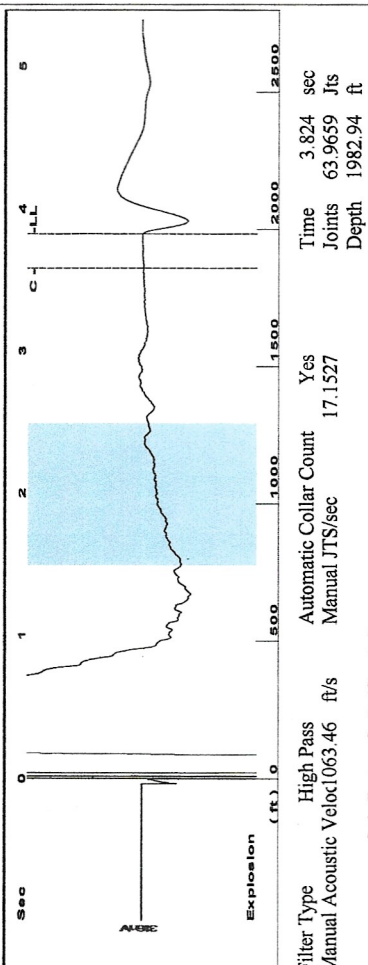
Submitted Electronically

Do NOT Write in This Space - KCC USE ONLY
Date Tested: Results: Date Plugged: Date Repaired: Date Put Back in Service:
Review Completed by: Comments:
TA Approved: Yes Denied Date:

Mail to the Appropriate KCC Conservation Office:

Table with 3 columns: District Office, Address, Phone. Rows for District Office #1, #2, #3, #4.

Group: MyWells Well: Sooby #1 (acquired on: 12/14/21 10:46:14)



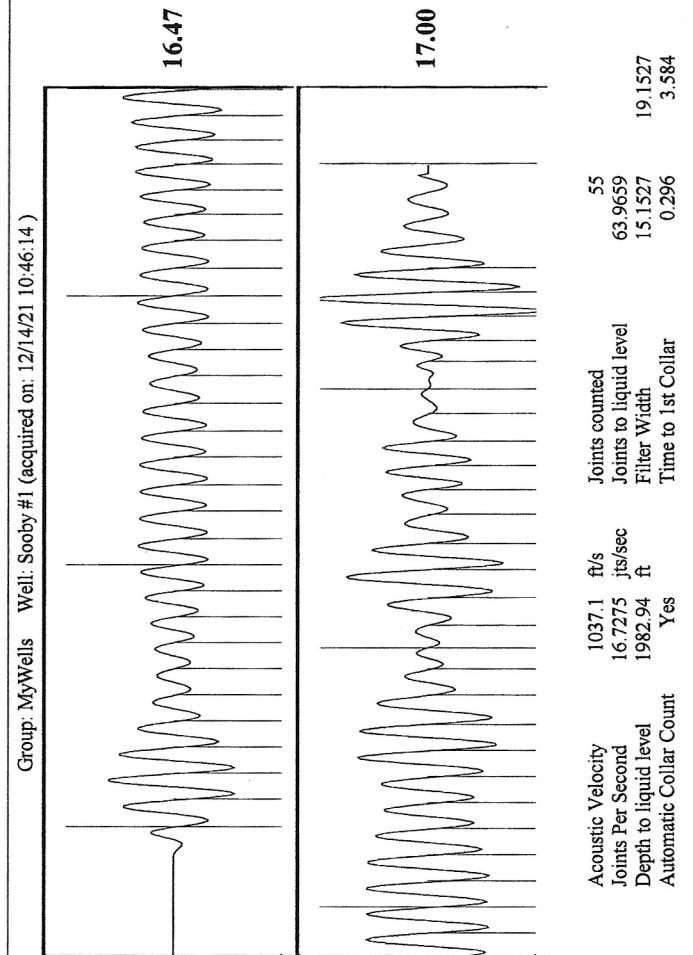
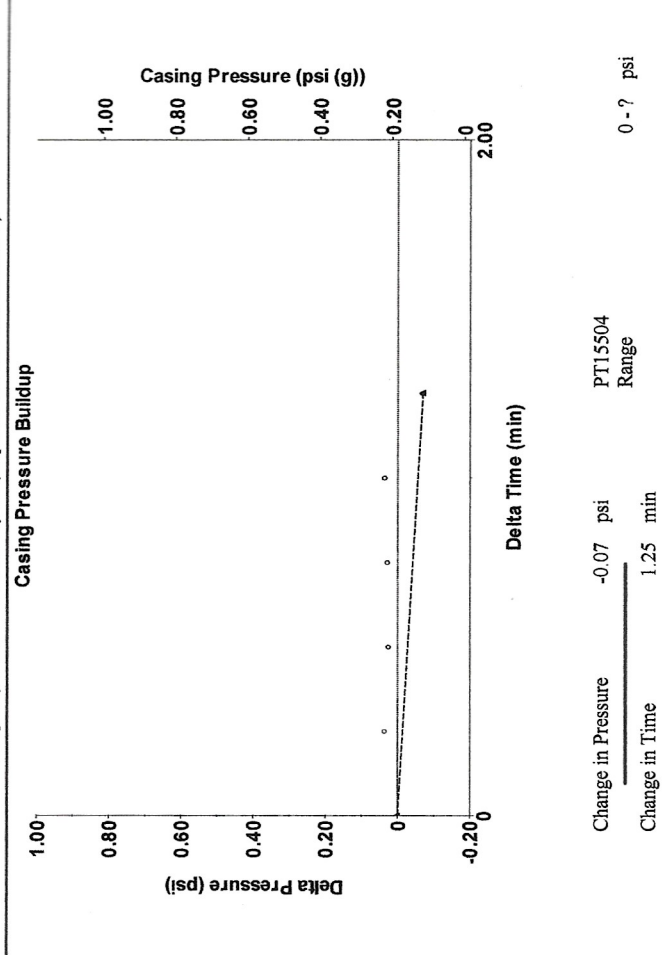
Analysis Method: Automatic

Group: MyWells Well: Sooby #1 (acquired on: 12/14/21 10:46:14)

Production Current	Oil 0	Potential - * - BBL/D	Casing Pressure 0.2 psi (g)	Producing Annular Gas Flow 0 Mscf/D
Water 0	Gas 0.0	- * - BBL/D	Casing Pressure Buildup -0.070 psi	% Liquid 100 %
IPR Method PBHP/SBHP	Production Efficiency 0.0	Vogel - * -	Gas/Liquid Interface Pressure 1.25 min	Pump Intake 1245.6 psi (g)
Oil 39 deg API			Liquid Level Depth 1982.94 ft	Producing BHP 1100.5 psi (g)
Water 1.05 Sp.Gr.H2O			Pump Intake Depth 4720.00 ft	Static BHP - * - psi (g)
Gas 0.94 Sp.Gr.AIR			Formation Depth 4401.00 ft	
Acoustic Velocity 1037.1 ft/s				

Formation Submergence 2737 ft
 Total Gaseous Liquid Column HT (TVD) 2737 ft
 Equivalent Gas Free Liquid HT (TVD)

Acoustic Test



December 30, 2021

Catherine H Stucky
Hartman Oil Co., Inc.
10500 E BERKELEY SQ PKWY STE 100
WICHITA, KS 67206-6816

Re: Temporary Abandonment
API 15-055-10063-00-00
SOOBY 1
NW/4 Sec.27-22S-33W
Finney County, Kansas

Dear Catherine H Stucky:

"Your temporary abandonment (TA) application for the well listed above has been approved. In accordance with K.A.R. 82-3-111 the TA status of this well will expire 12/30/2022.

- * If you return this well to service or plug it, please notify the District Office.
- * If you sell this well you are required to file a Transfer of Operator form, T-1.
- * If the well will remain temporarily abandoned, you must submit a new TA application, CP-111, before 12/30/2022.

You may contact me at the number above if you have questions.

Very truly yours,

Michael Maier"