

KANSAS CORPORATION COMMISSION
OIL & GAS CONSERVATION DIVISION

TEMPORARY ABANDONMENT WELL APPLICATION

OPERATOR: License#
Name:
Address 1:
Address 2:
City: State: Zip:
Contact Person:
Phone:
Contact Person Email:
Field Contact Person:
Field Contact Person Phone:

API No. 15-
Spot Description:
Sec. Twp. S. R.
GPS Location: Lat: Long:
Datum: NAD27 NAD83 WGS84
County: Elevation:
Lease Name: Well #:
Well Type: Oil Gas OG WSW Other:
SWD Permit #: ENHR Permit #:
Gas Storage Permit #:
Spud Date: Date Shut-In:

Table with 7 columns: Conductor, Surface, Production, Intermediate, Liner, Tubing. Rows include Size, Setting Depth, Amount of Cement, Top of Cement, Bottom of Cement.

Casing Fluid Level from Surface: How Determined? Date:
Casing Squeeze(s): to w / sacks of cement, to w / sacks of cement. Date:
Do you have a valid Oil & Gas Lease? Yes No
Depth and Type: Junk in Hole at Tools in Hole at Casing Leaks: Yes No Depth of casing leak(s):
Type Completion: ALT. I ALT. II Depth of: DV Tool: w / sacks of cement Port Collar: w / sack of cement
Packer Type: Size: Inch Set at: Feet
Total Depth: Plug Back Depth: Plug Back Method:

Geological Data:

Table with 4 columns: Formation Name, Formation Top, Formation Base, Completion Information. Rows 1 and 2.

UNDER PENALTY OF PERJURY I HEREBY ATTEST THAT THE INFORMATION CONTAINED HEREIN IS TRUE AND CORRECT TO THE BEST OF MY KNOWLEDGE

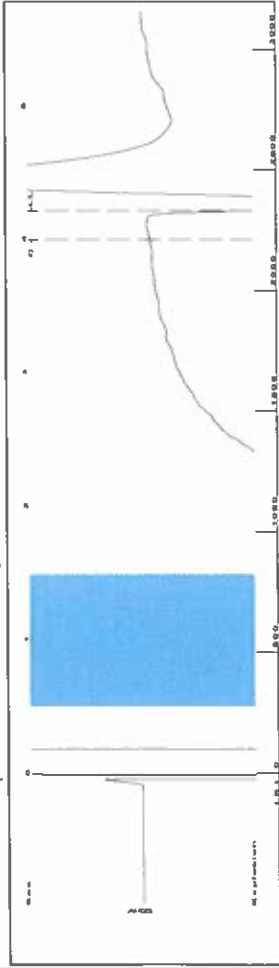
Submitted Electronically

Form with fields: Do NOT Write in This Space - KCC USE ONLY, Date Tested, Results, Date Plugged, Date Repaired, Date Put Back in Service, Review Completed by, Comments, TA Approved: Yes Denied, Date.

Mail to the Appropriate KCC Conservation Office:

Table with 2 columns: Office Address, Phone. Rows for KCC District Office #1, #2, #3, #4.

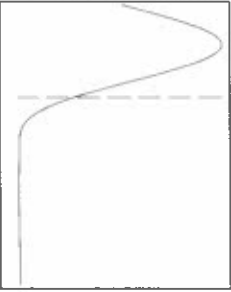
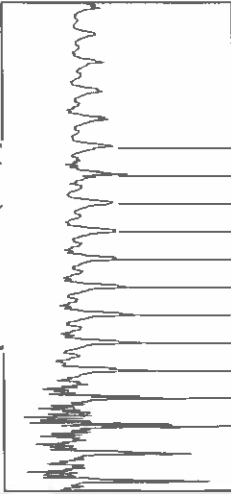
Group: SUBLETTE Well: Wyatt Trust 9-N (acquired on: 04/06/21 12:48:36)



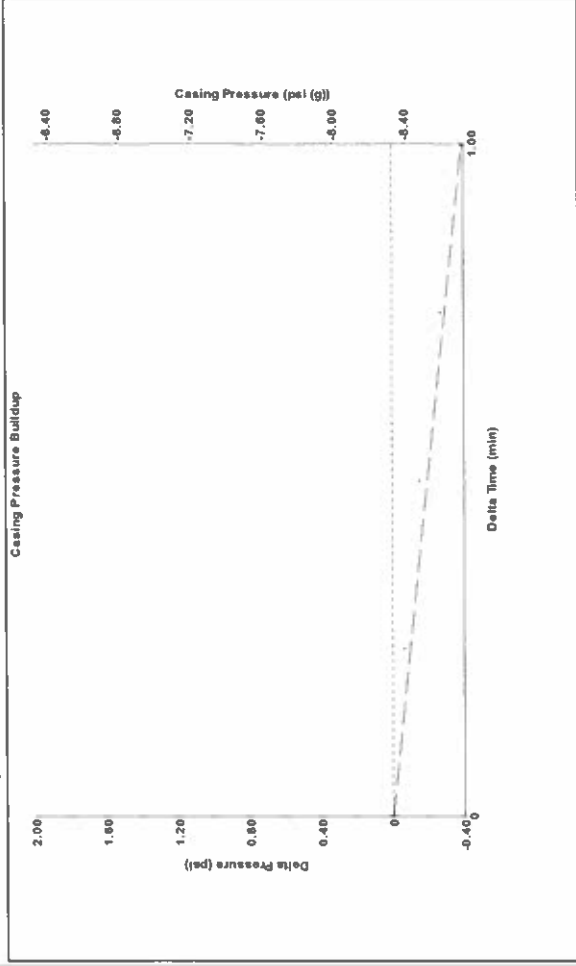
Filter Type High Pass Automatic Collar Count Yes  
 Manual Acoustic Velo 112.28 ft/s Manual JTS/sec 17.5439

Time 4.213 sec  
 Joints 73.4563 Jts  
 Depth 2328.56 ft

[ 0.5 to 1.5 (Sec) ]



Group: SUBLETTE Well: Wyatt Trust 9-N (acquired on: 04/06/21 12:48:36)

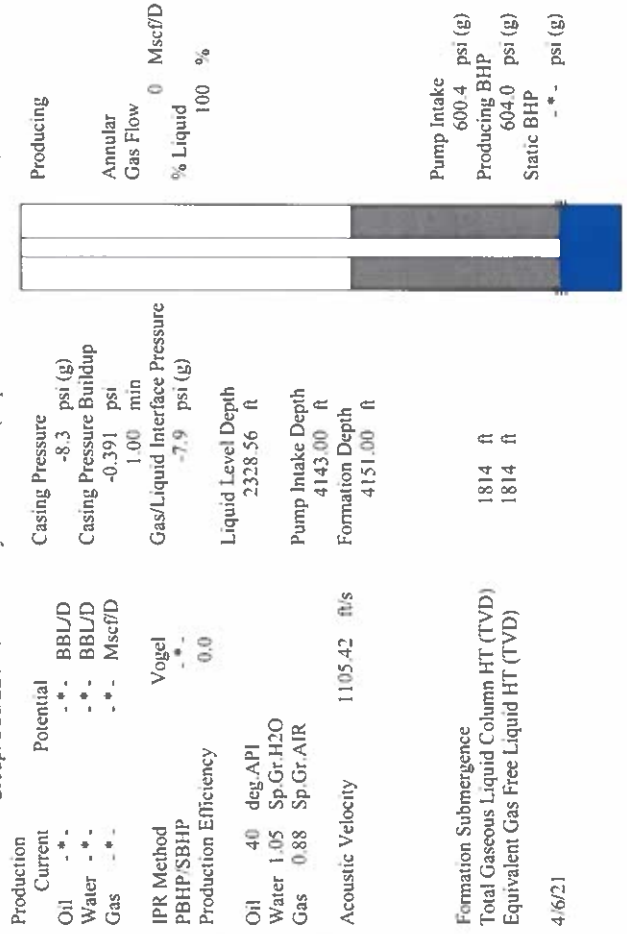


Change in Pressure -0.39 psi  
 Change in Time 1.00 min

PT14679  
 Range 0 - 7 psi

**Analysis Method: Automatic**

Group: SUBLETTE Well: Wyatt Trust 9-N (acquired on: 04/06/21 12:48:36)

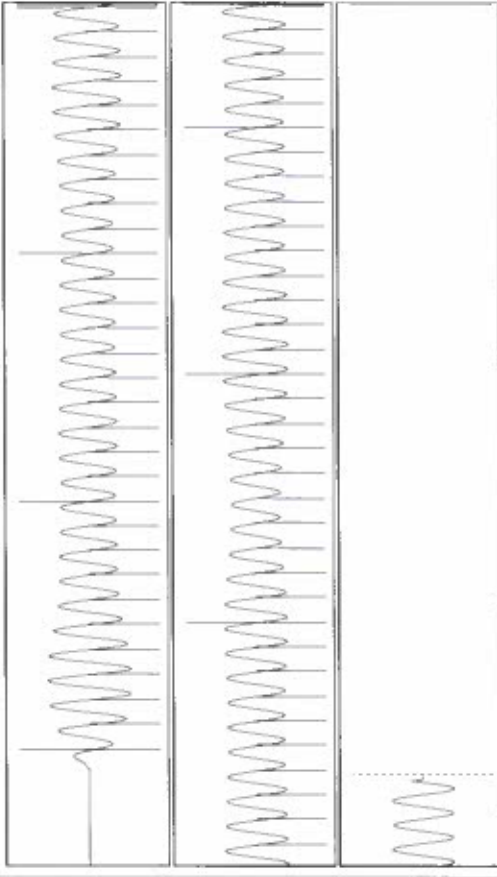


Production Current Potential Casing Pressure  
 Oil - \* - \* - BBL/D -8.3 psi (g)  
 Water - \* - \* - BBL/D Casing Pressure Buildup  
 Gas - \* - \* - Mscf/D -0.391 psi  
 IPR Method Vogel Gas/Liquid Interface Pressure  
 PBHP/SBHP - \* - \* - Mscf/D -7.9 psi (g)  
 Production Efficiency 0.0  
 Oil 40 deg-API Liquid Level Depth  
 Water 1.05 Sp.Gr.H2O 2328.56 ft  
 Gas 0.88 Sp.Gr.AIR Pump Intake Depth  
 Acoustic Velocity 1105.42 ft/s Formation Depth 4143.00 ft  
 4151.00 ft

Formation Submergence  
 Total Gaseous Liquid Column HT (TVDD) 1814 ft  
 Equivalent Gas Free Liquid HT (TVDD) 1814 ft

4/6/21

Group: SUBLETTE Well: Wyatt Trust 9-N (acquired on: 04/06/21 12:48:36)



Acoustic Velocity 1105.42 ft/s Joints counted 65  
 Depth to liquid level 17.4356 ft Joints to liquid level 73.4563  
 Automatic Collar Count Yes Filter Width 15.5439  
 Time to 1st Collar 0.268 3.996

December 30, 2021

Katherine McClurkan  
Merit Energy Company, LLC  
13727 Noel Road, Suite 1200  
Dallas, TX 75240

Re: Temporary Abandonment  
API 15-081-21635-00-01  
Wyatt Trust 9-N16-30-33  
SW/4 Sec. 16-30S-33W  
Haskell County, Kansas

Dear Katherine McClurkan:

Your application for Temporary Abandonment (TA) for the above-listed well is denied for the following reasons(s):

**Shut-in Over 10 years**

Pursuant to K.A.R. 82-3-111, the well must be plugged or returned to service by 01/29/2022.

If you wish to instead file an application for an exception to the 10-year limitation of K.A.R. 82-3-111, demonstrating why it is necessary to TA the well for more than 10 years, then you must file the application for an exception by 01/29/2022.

**This deadline does NOT override any compliance deadline given to you in any Commission Order.**

You may contact me if you have any questions.

Sincerely,  
Michael Maier  
KCC DISTRICT 1