

KANSAS CORPORATION COMMISSION  
OIL & GAS CONSERVATION DIVISION

TEMPORARY ABANDONMENT WELL APPLICATION

OPERATOR: License# \_\_\_\_\_  
 Name: \_\_\_\_\_  
 Address 1: \_\_\_\_\_  
 Address 2: \_\_\_\_\_  
 City: \_\_\_\_\_ State: \_\_\_\_\_ Zip: \_\_\_\_\_ + \_\_\_\_\_  
 Contact Person: \_\_\_\_\_  
 Phone: ( \_\_\_\_\_ ) \_\_\_\_\_  
 Contact Person Email: \_\_\_\_\_  
 Field Contact Person: \_\_\_\_\_  
 Field Contact Person Phone: ( \_\_\_\_\_ ) \_\_\_\_\_

API No. 15- \_\_\_\_\_  
 Spot Description: \_\_\_\_\_  
 \_\_\_\_\_ - \_\_\_\_\_ - \_\_\_\_\_ - \_\_\_\_\_ Sec. \_\_\_\_\_ Twp. \_\_\_\_\_ S. R. \_\_\_\_\_  E  W  
 \_\_\_\_\_ feet from  N /  S Line of Section  
 \_\_\_\_\_ feet from  E /  W Line of Section  
 GPS Location: Lat: \_\_\_\_\_, Long: \_\_\_\_\_  
(e.g. xx.xxxxx) (e.g. -xxx.xxxxx)  
 Datum:  NAD27  NAD83  WGS84  
 County: \_\_\_\_\_ Elevation: \_\_\_\_\_  GL  KB  
 Lease Name: \_\_\_\_\_ Well #: \_\_\_\_\_  
 Well Type: (check one)  Oil  Gas  OG  WSW  Other: \_\_\_\_\_  
 SWD Permit #: \_\_\_\_\_  ENHR Permit #: \_\_\_\_\_  
 Gas Storage Permit #: \_\_\_\_\_  
 Spud Date: \_\_\_\_\_ Date Shut-In: \_\_\_\_\_

	Conductor	Surface	Production	Intermediate	Liner	Tubing
Size						
Setting Depth						
Amount of Cement						
Top of Cement						
Bottom of Cement						

Casing Fluid Level from Surface: \_\_\_\_\_ How Determined? \_\_\_\_\_ Date: \_\_\_\_\_  
 Casing Squeeze(s): \_\_\_\_\_ to \_\_\_\_\_ w / \_\_\_\_\_ sacks of cement, \_\_\_\_\_ to \_\_\_\_\_ w / \_\_\_\_\_ sacks of cement. Date: \_\_\_\_\_  
(top) (bottom) (top) (bottom)  
 Do you have a valid Oil & Gas Lease?  Yes  No  
 Depth and Type:  Junk in Hole at \_\_\_\_\_  Tools in Hole at \_\_\_\_\_ Casing Leaks:  Yes  No Depth of casing leak(s): \_\_\_\_\_  
(depth) (depth)  
 Type Completion:  ALT. I  ALT. II Depth of:  DV Tool: \_\_\_\_\_ w / \_\_\_\_\_ sacks of cement  Port Collar: \_\_\_\_\_ w / \_\_\_\_\_ sack of cement  
(depth) (depth)  
 Packer Type: \_\_\_\_\_ Size: \_\_\_\_\_ Inch Set at: \_\_\_\_\_ Feet  
 Total Depth: \_\_\_\_\_ Plug Back Depth: \_\_\_\_\_ Plug Back Method: \_\_\_\_\_

**Geological Data:**

Formation Name	Formation Top	Formation Base	Completion Information
1. _____	At: _____	to _____ Feet	Perforation Interval _____ to _____ Feet or Open Hole Interval _____ to _____ Feet
2. _____	At: _____	to _____ Feet	Perforation Interval _____ to _____ Feet or Open Hole Interval _____ to _____ Feet

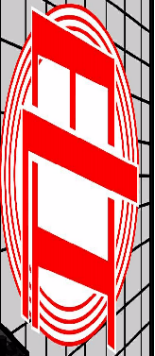
UNDER PENALTY OF PERJURY I HEREBY ATTEST THAT THE INFORMATION CONTAINED HEREIN IS TRUE AND CORRECT TO THE BEST OF MY KNOWLEDGE

Submitted Electronically

<b>Do NOT Write in This Space - KCC USE ONLY</b>	Date Tested: _____	Results: _____	Date Plugged: _____	Date Repaired: _____	Date Put Back in Service: _____
	Review Completed by: _____ Comments: _____				
TA Approved: <input type="checkbox"/> Yes <input type="checkbox"/> Denied Date: _____					

Mail to the Appropriate KCC Conservation Office:

	KCC District Office #1 - 210 E. Frontview, Suite A, Dodge City, KS 67801	Phone 620.682.7933
	KCC District Office #2 - 3450 N. Rock Road, Building 600, Suite 601, Wichita, KS 67226	Phone 316.337.7400
	KCC District Office #3 - 137 E. 21st St., Chanute, KS 66720	Phone 620.902.6450
	KCC District Office #4 - 2301 E. 13th Street, Hays, KS 67601-2651	Phone 785.261.6250



# STATIC FLUID TEMPERATURE LOG

**Company** MARCH EXPLORATION LLC  
**Well** MELVILLE 1 A  
**Field** EL DORADO  
**County** BUTLER **State** COUNTY

**Company** MARCH EXPLORATION LLC  
**Well** MELVILLE 1 A  
**Field** EL DORADO  
**County** BUTLER  
**State** COUNTY

**Location:** API #: 15-015-20510  
 LAT 37.80762 LONG -96.97897  
 SW NW NE  
 SEC 10 TWP 26S RGE 4E  
**Permanent Datum** GROUND LEVEL Elevation 1351  
**Log Measured From** KB  
**Drilling Measured From**

**Other Services**  
**Elevation**  
 K.B: 1356  
 D.F.  
 G.L: 1351

Date	12/7/21						
Run Number	ONE						
Depth Driller							
Depth Logger	2402						
Bottom Logged Interval	2402						
Top Log Interval	0						
Open Hole Size	OIL						
Type Fluid							
Density / Viscosity							
Max. Recorded Temp.							
Estimated Cement Top							
Time Well Ready							
Time Logger on Bottom	8728						
Equipment Number	HUTCHINSON						
Location	CHILDRESS						
Recorded By	J DYSON						
Witnessed By							
Borehole Record		Tubing Record					
Run Number	Bit	From	To	Size	Weight	From	To
Casing Record	Size	Wgt/Ft		Top	Bottom		
Surface String							
Prot. String							
Production String							
Liner							

<<< Fold Here >>>

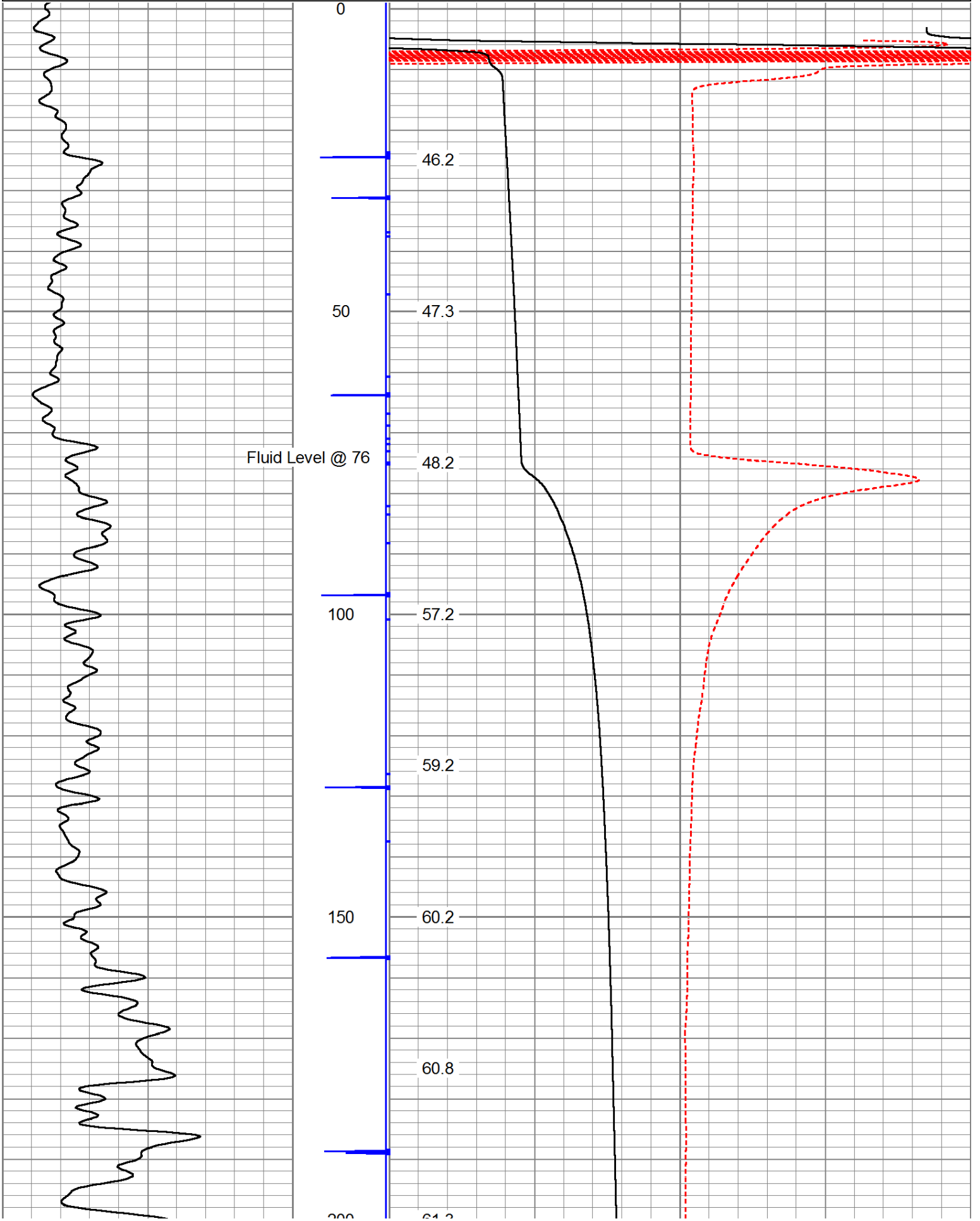
All interpretations are opinions based on inferences from electrical or other measurements and we cannot and do not guarantee the accuracy or correctness of any interpretation, and we shall not, except in the case of gross or willful negligence on our part, be liable or responsible for any loss, costs, damages, or expenses incurred or sustained by anyone resulting from any interpretation made by any of our officers, agents or employees. These interpretations are also subject to our general terms and conditions set out in our current Price Schedule.

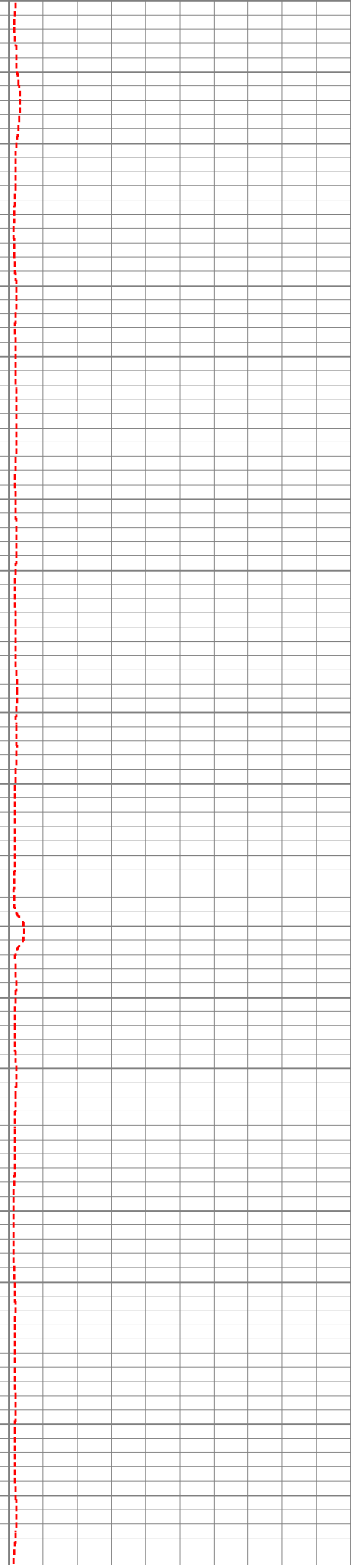
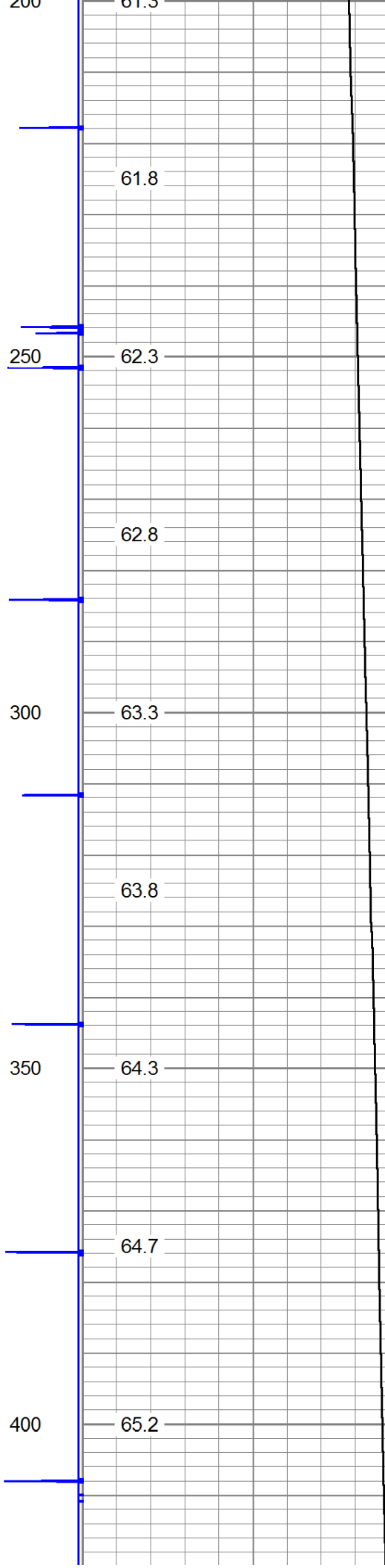
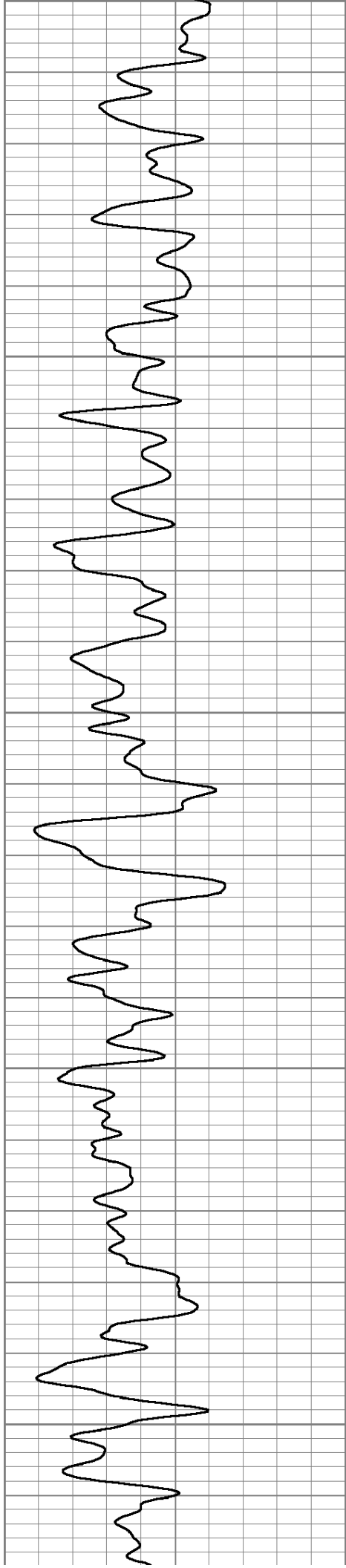
### Comments

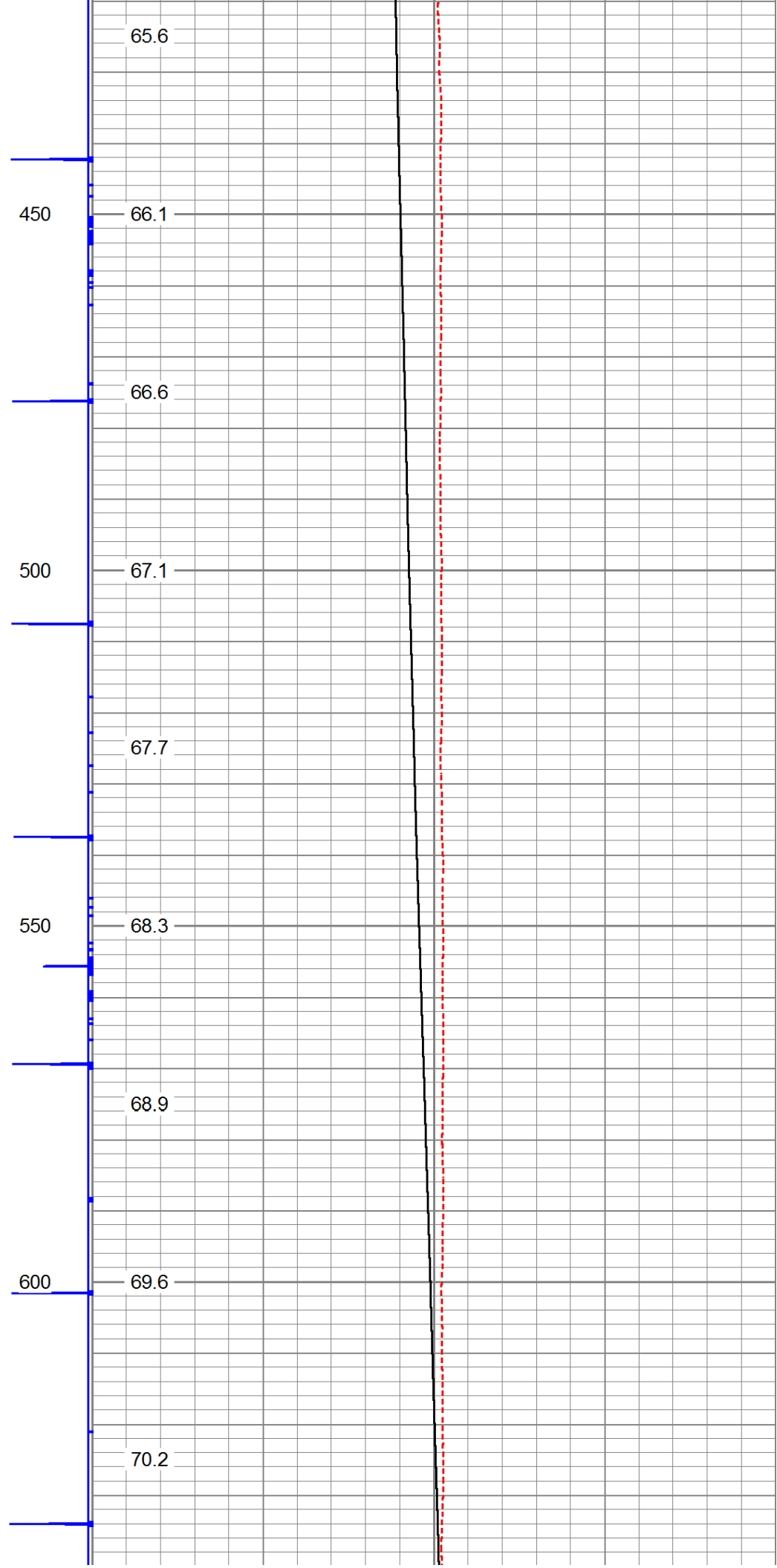
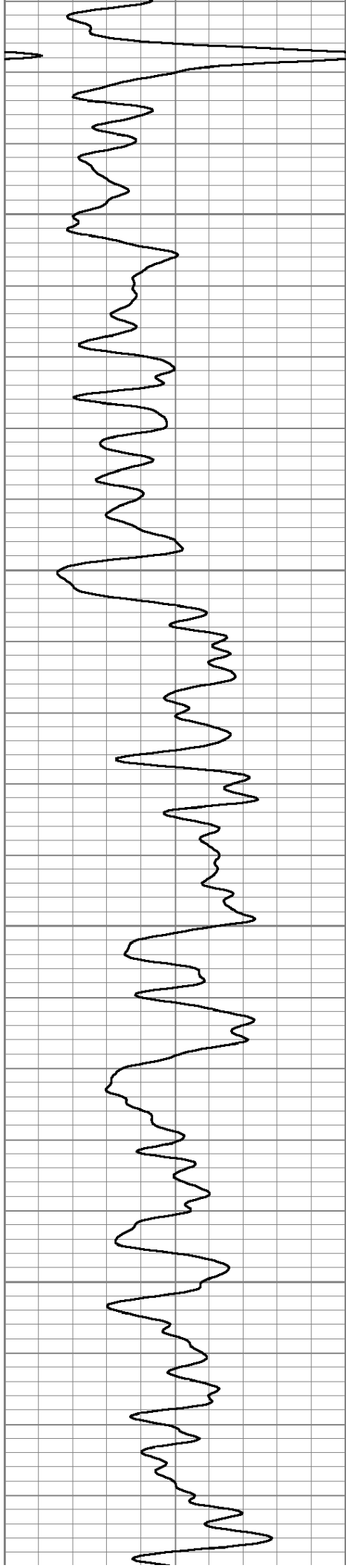
STATIC FLUID @ 76'

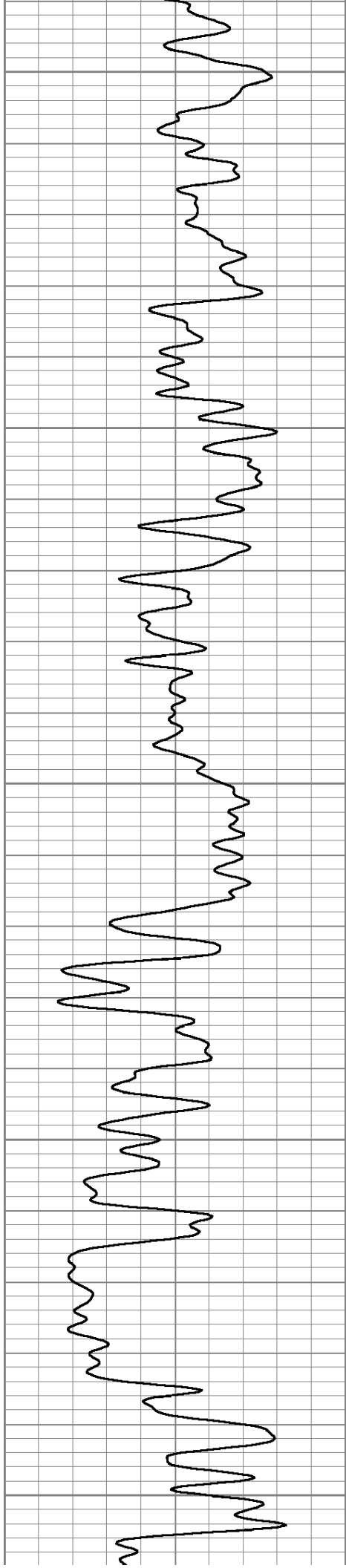
Database File: melville 1a dec 2021.db  
 Dataset Pathname: passME2  
 Presentation Format: temp2  
 Dataset Creation: Tue Dec 07 13:52:19 2021  
 Charted by: Depth in Feet scaled 1:240

0	GR (GAPI)	300	30 CCL	-1	-1	DIMP (degF)	1
				30	TEMPERATURE (degF)		110
				TEMP			
				(degF)			









650 70.8

71.5

700 72.0

72.5

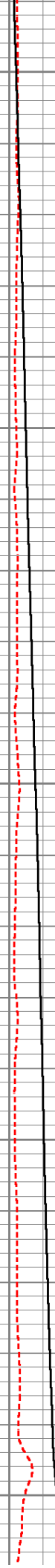
750 73.1

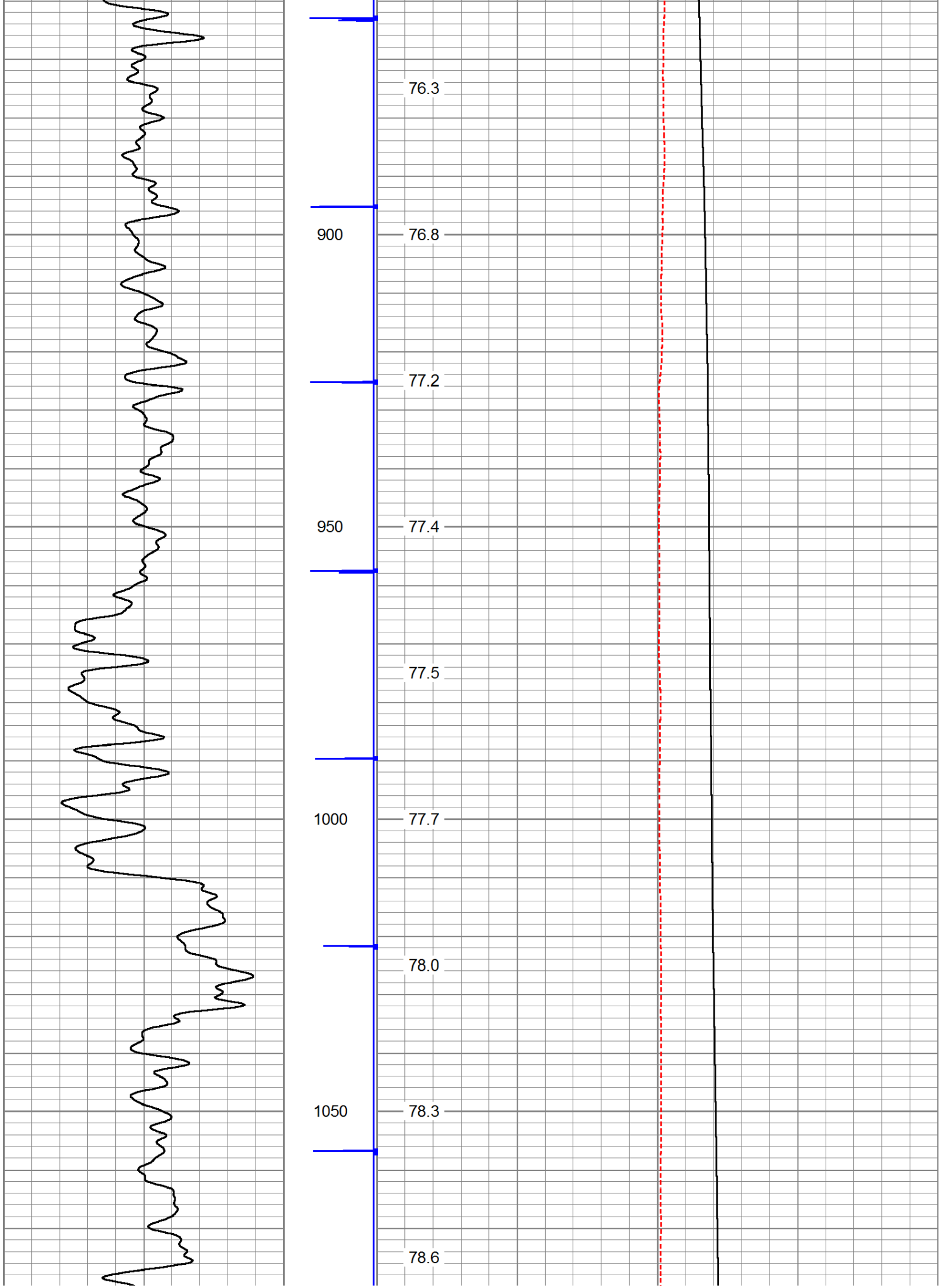
73.6

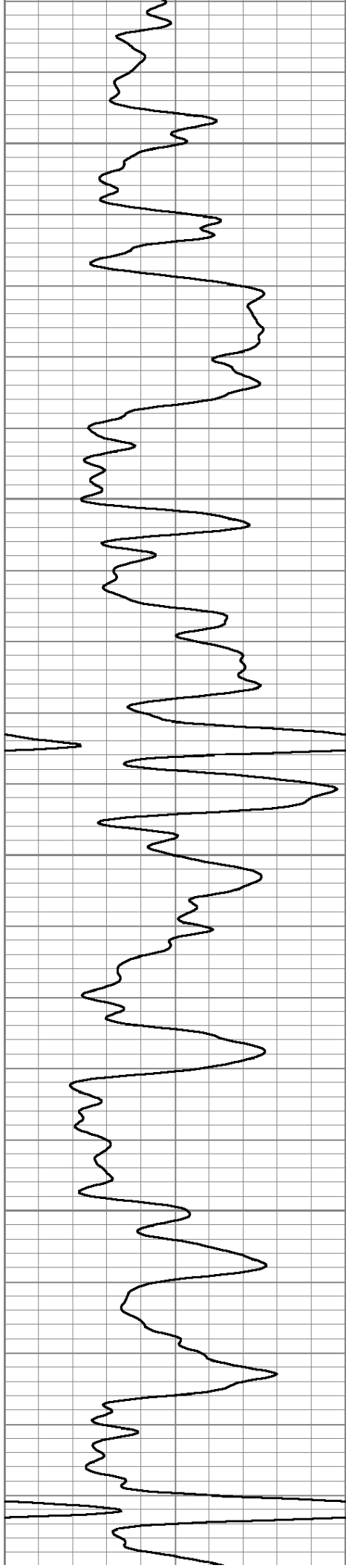
800 74.1

74.6

850 75.6







1100

78.9

79.2

1150

79.6

79.9

1200

80.4

80.9

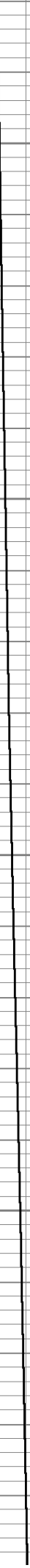
1250

81.4

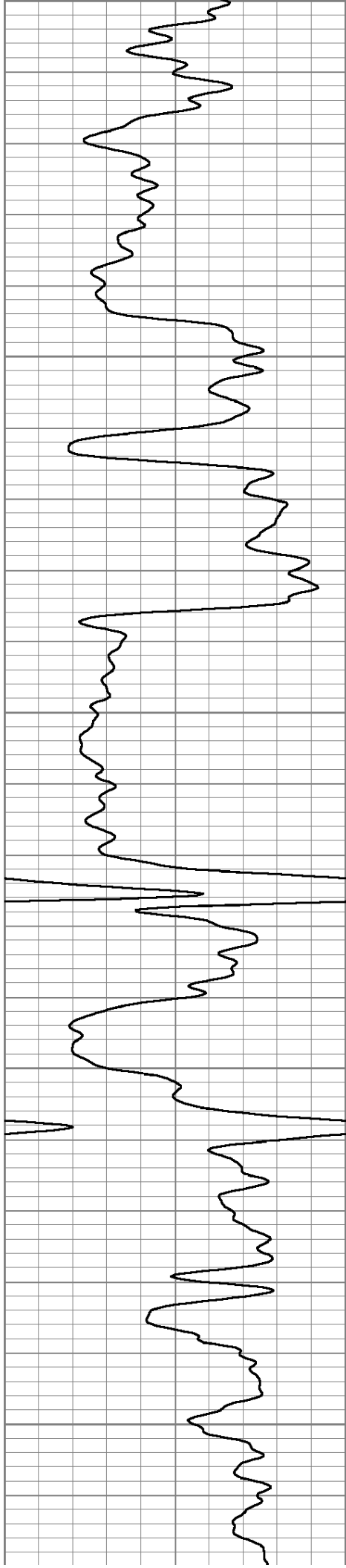
81.8

1300

82.2

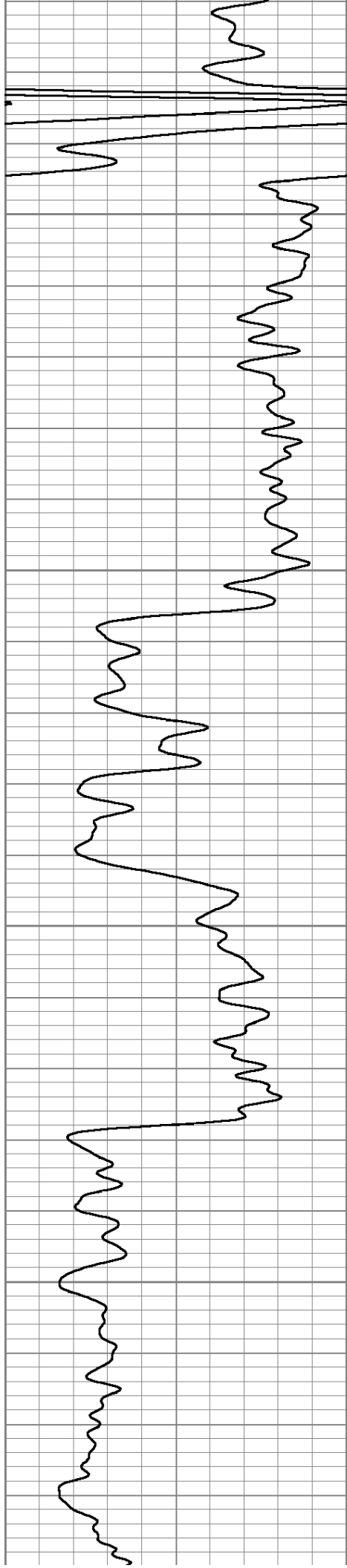




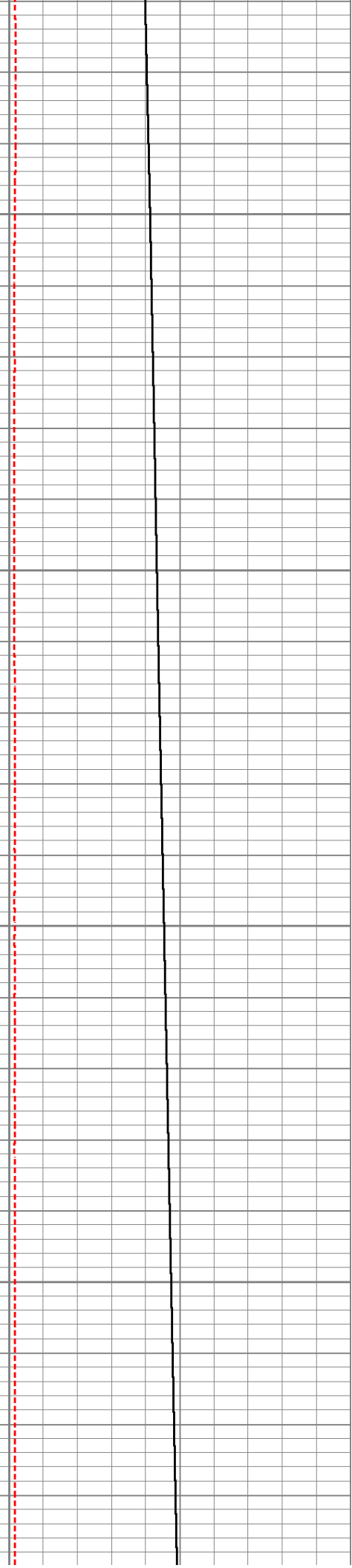


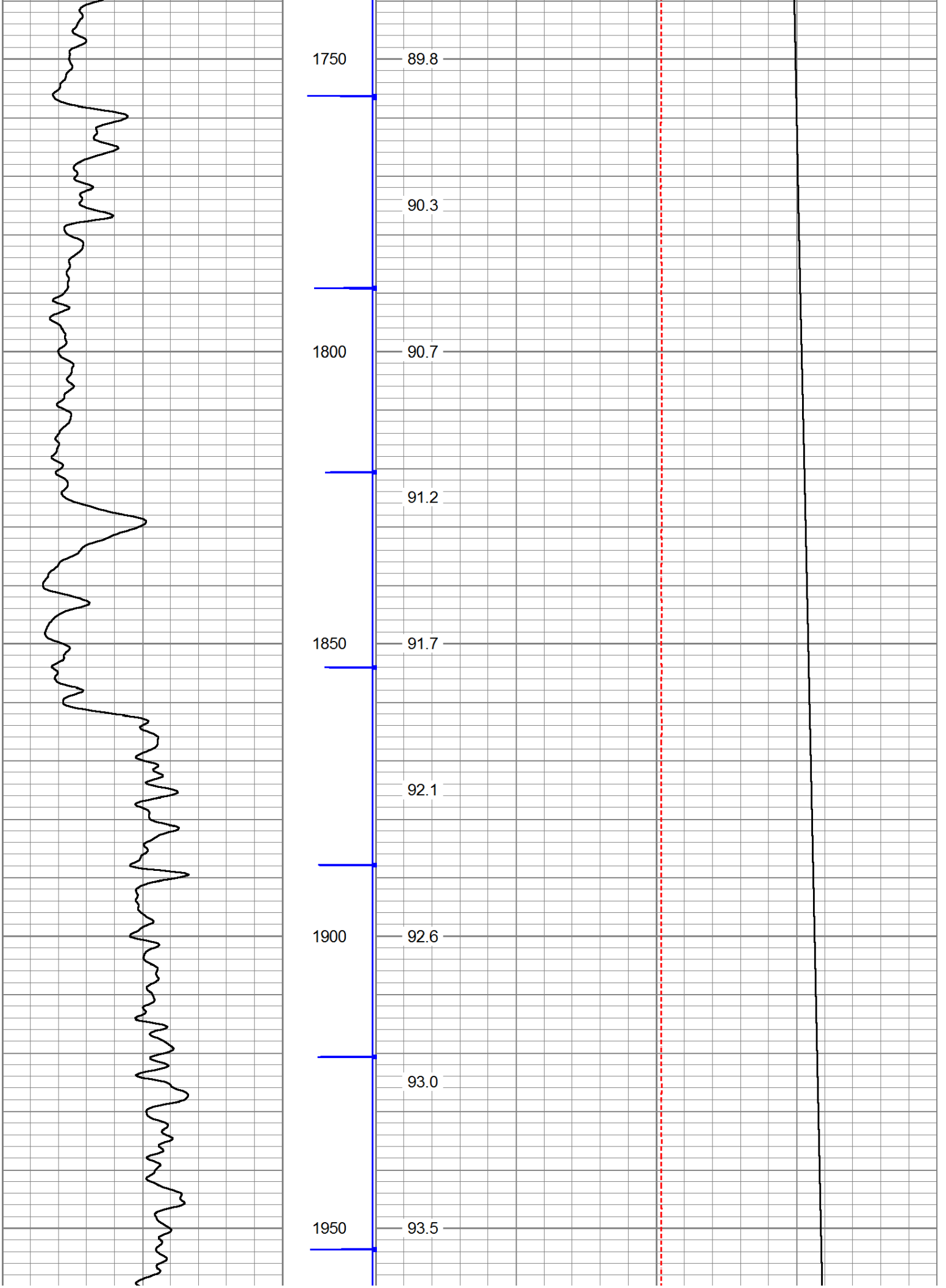
1500 82.2  
82.6  
1350 83.0  
83.4  
1400 83.9  
84.4  
1450 84.8  
85.2  
1500 85.6

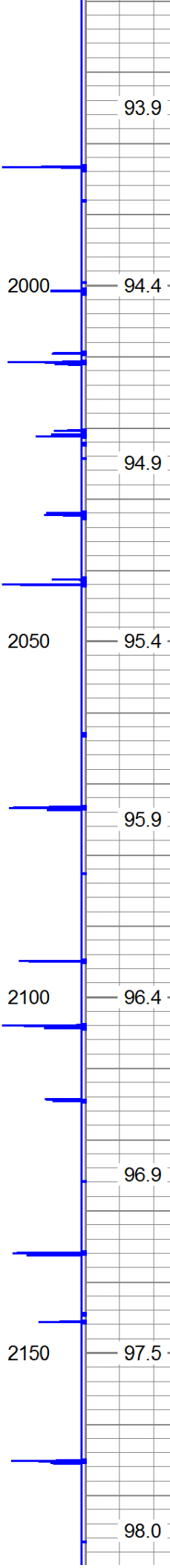
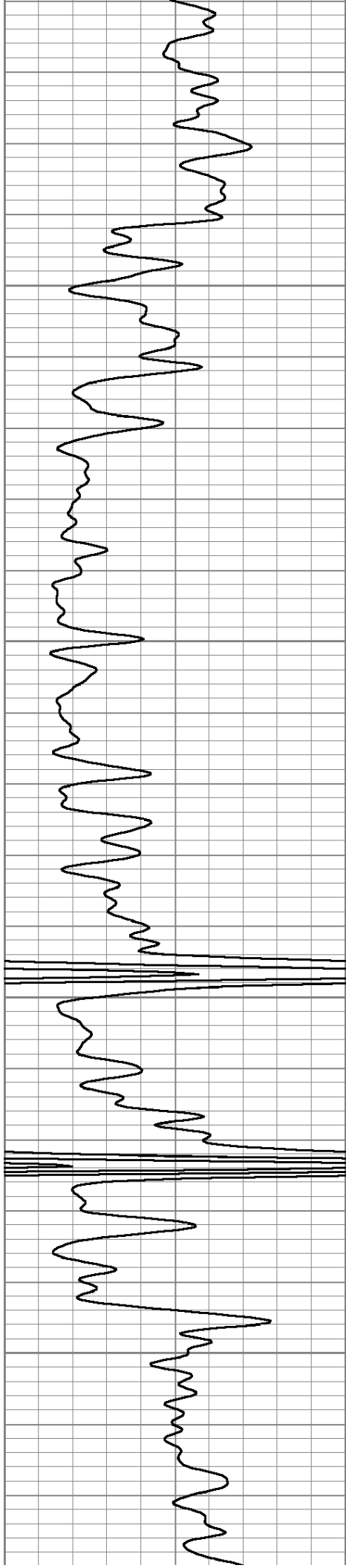




86.0  
1550 86.5  
86.9  
1600 87.3  
87.7  
1650 88.2  
88.6  
1700 89.0  
89.4







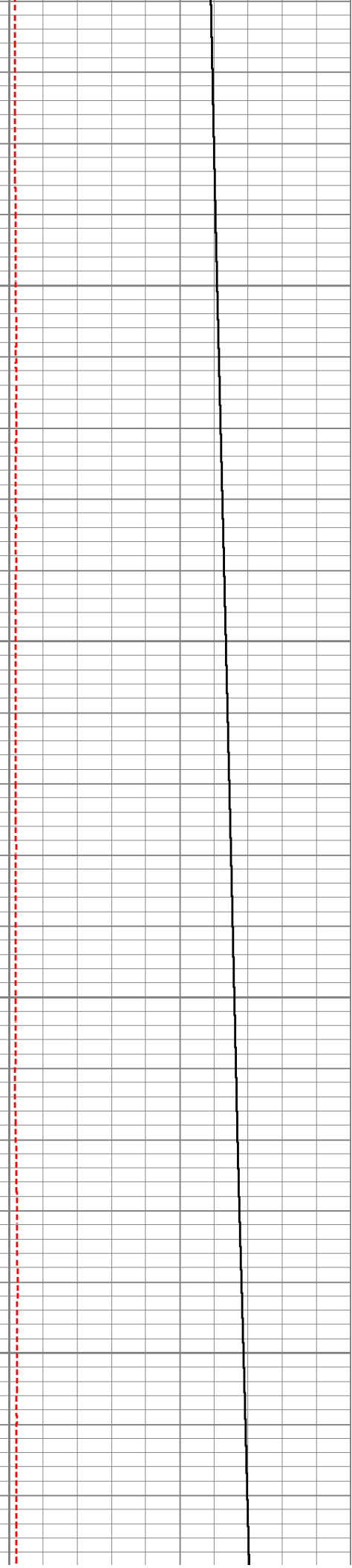
93.9  
94.4  
94.9  
95.4  
95.9  
96.4  
96.9  
97.5  
98.0

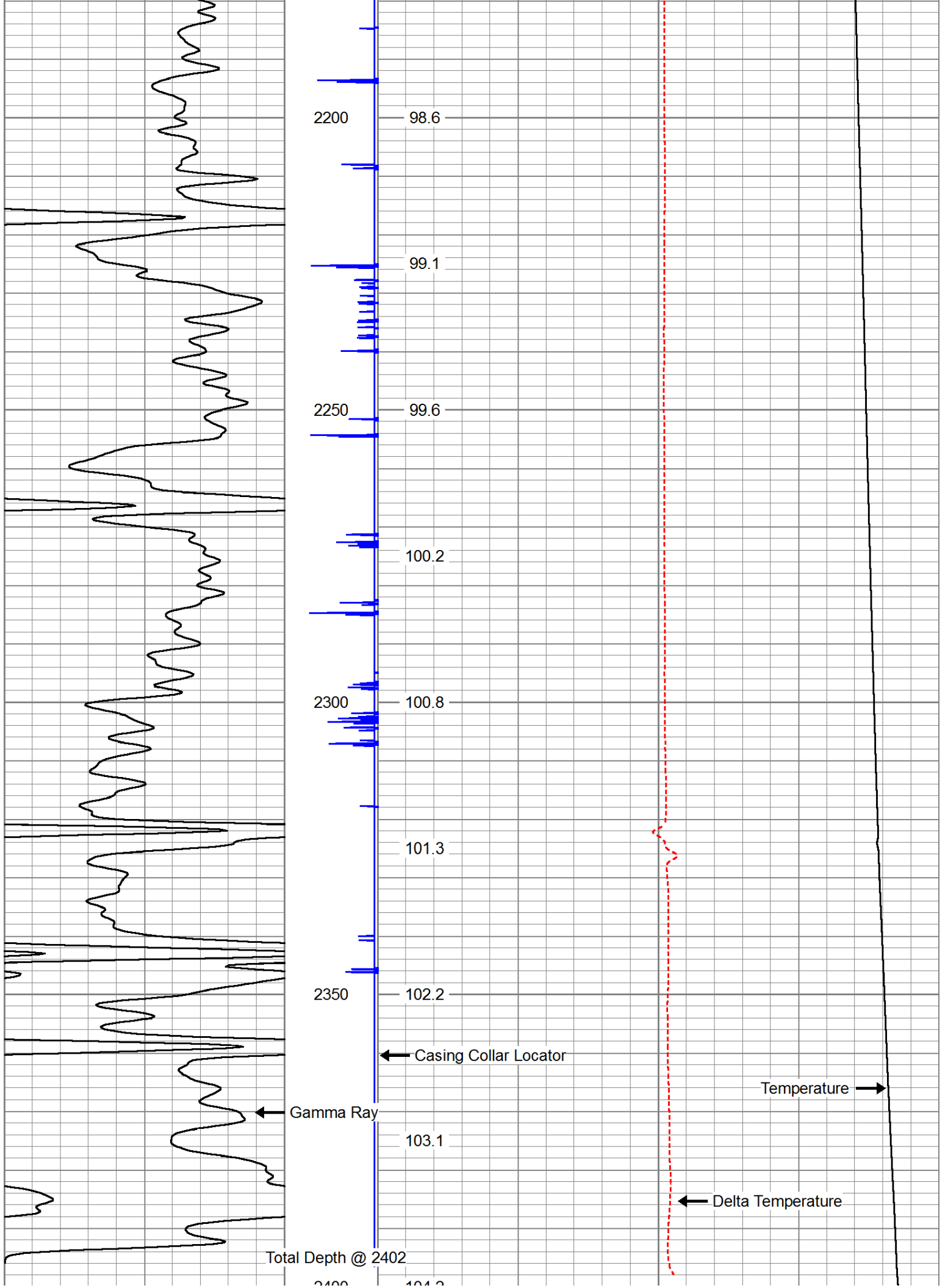
2000

2050

2100

2150





0	GR (GAPI)	300	30 CCL -1	-1	DTMP (degF)	1
				30	TEMPERATURE (degF)	110
				TEMP (degF)		

Conservation Division  
District Office No. 2  
3450 N. Rock Road  
Building 600, Suite 601  
Wichita, KS 67226



Phone: 316-337-7400  
Fax: 316-630-4005  
<http://kcc.ks.gov/>

Andrew J. French, Chairperson  
Dwight D. Keen, Commissioner  
Susan K. Duffy, Commissioner

Laura Kelly, Governor

December 20, 2021

Nelson Burns  
March Exploration LLC  
11120 E 26TH ST N SUITE 1100  
WICHITA, KS 67226-4553

Re: Temporary Abandonment  
API 15-015-20510-00-01  
MELVILLE 1A OWWO  
NE/4 Sec.10-26S-04E  
Butler County, Kansas

Dear Nelson Burns:

Your application for Temporary Abandonment (TA) for the above-listed well is denied for the following reasons(s):

**High Fluid Level**

Pursuant to K.A.R. 82-3-111, the well must be plugged, or returned to service, or obtain temporary abandonment status by 01/19/2022.

**This deadline does NOT override any compliance deadline given to you in any Commission Order.**

You may contact me if you have any questions.

Sincerely,  
Neal Rupp ECRS  
KCC DISTRICT 2