



Liberal Yard #17 Phone 620-624-2277 - 1700 S. Country Estates Road, Liberal KS 67901

PRESSURE PUMPING Job Log

Customer:	Berexco LLC	Cement Pump No.:	38750, 19842 12Hrs	Operator TRK No.:	78868 Angel
Address:	2020 N Bramblewood	Ticket #:	1718 19715 L	Bulk TRK No.:	30463 & 30464 27808
City, State, Zip:	Wichita, Kansas 67206-1094	Job Type:	Z-42 Cement - Production Casing		
Service District:	1717 - Liberal, Ks	Well Type:	OIL / GAS		
Well Name and No.:	Risa # 1-22	Well Location:	22-30S-33W	County:	Haskell State: Kansas

Type of Cmt	Sacks	Additives	Truck Loaded On		
A Serv Lite	520	1/4# CelloFlake	30463 & 30464	Front	Back
AA-2 Premium Plus	305	10% Gyp Seal, 10% Salt, 5# Gilsonite, 5# FluidLoss, .25# Defoamer	27808	Front	Back
				Front	Back

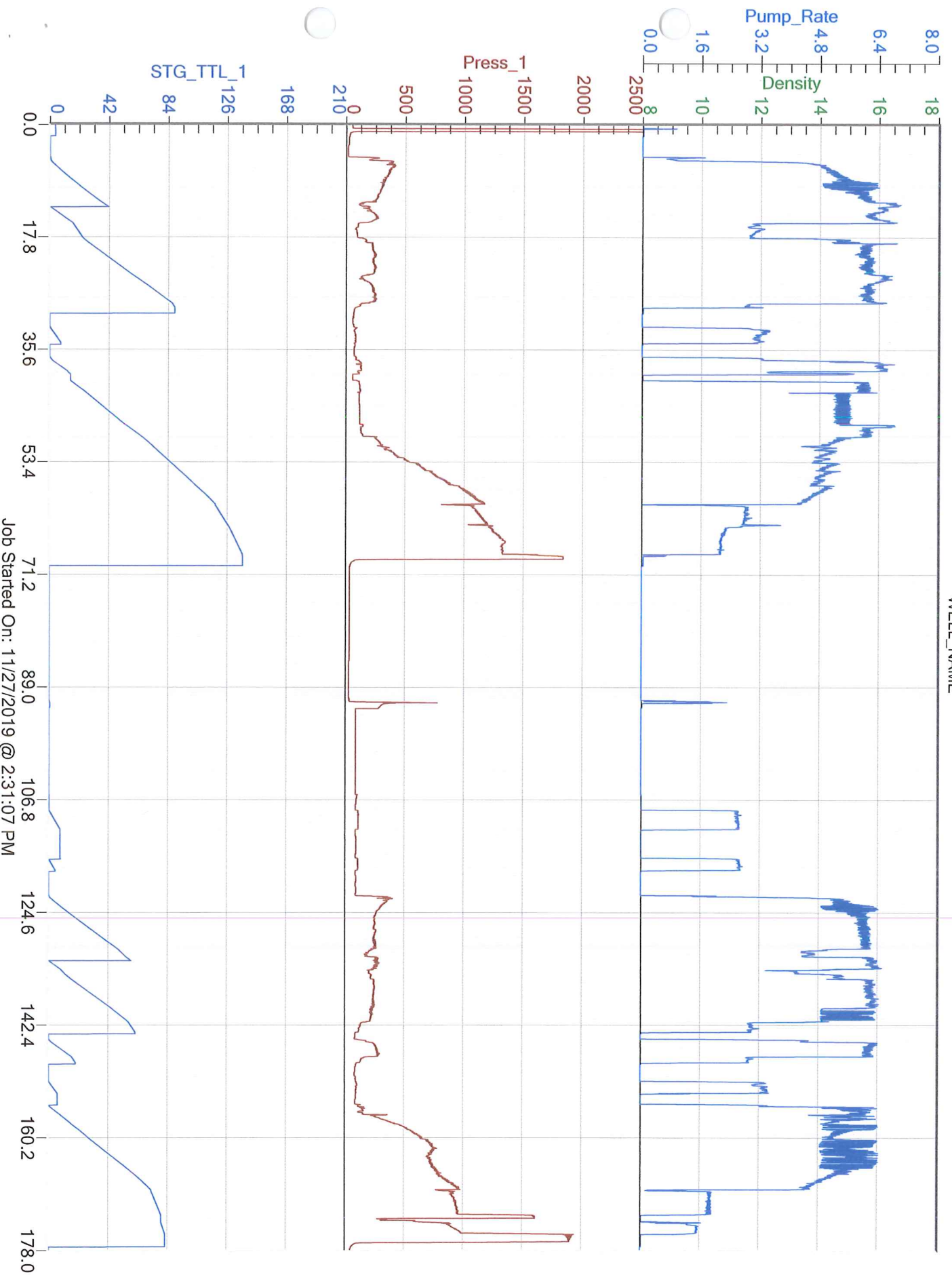
Lead/Tail:	Weight #1 Gal.	Cu/Ft/sk	Water Requirements	CU. FT.	Man Hours / Personnel	
Lead:	12.6	1.89	10.29	982.8	Man Hours:	80
Tail:	14.8	1.51	6.65	460.55	# of Men on Job:	5

Time (am/pm)	(BPM)	Volume (BBLs)	Pumps		Pressure(Psi)		Description of Operation and Materials
			T	C	Tubing	Casing	
0100							On Location
0200							Safety Meeting
0700							Ran CSG
0900							Rig Up
1334							Pressure Test to 2000psi
1340	5	37.02				400	Pump Lead 110sx @ 12.6#
1347	6	68.4				200	Switch to Tail 255sx @ 14.8#
1400							Shut down Wash to Pit --- Drop Plug
1410	6	58.3				110	Displace with H2o
1434	2.2	76.1				1300	Switch to Mud
1443						1800	Pressured Plug
1447							Release Pressure -- Baffle Held -- Drop Trip Bomb
1507	2	0.5				800	Open D.V. Tool Circulated Well 4 Hrs
1845							Pump 50sx Into Rat And Mouse
1900	6	121.1				250	Pump Lead 410sx @ 12.6#
1920	6	13.4				200	Switch To Tail 50sx @ 14.8#
1928							Shut down Wash To Pit --- Drop Plug
1932	2	76.1				960	Displace with H2o
1950						1800	Pressured Plug
1955							Release Pressure -- Closing Plug Held
							Job Completed
							**** Cement To Surface ****

Size Hole	7 7/8"	Depth	5652'		TYPE	Plug Container	
Csg.	5.5" 15.5#	Depth	5650'	New / Used	Packer	Depth	
Baffle	42'	Depth			D.V.Tool	Yes	Depth 3200'
Landing Psi1	782.2psi	landing psi2	577.6psi		Perfs		CIBP

Customer Signature:	Basic Representative:	Angel Echevarria
	Basic Signature:	
	Date of Service:	11/27/2019

CUSTOMER
WELL_NAME



Job Started On: 11/27/2019 @ 2:31:07 PM