



TRILOBITE TESTING, INC.

DRILL STEM TEST REPORT

Val Energy Inc LLC
 125 N Market St STE 1110
 Wichita, Ks. 67202
 ATTN: David Barker

31-30s-12w Barber Co. Ks.
Bouziden 1-31
 Job Ticket: 64950 **DST#: 1**
 Test Start: 2019.10.23 @ 03:47:23

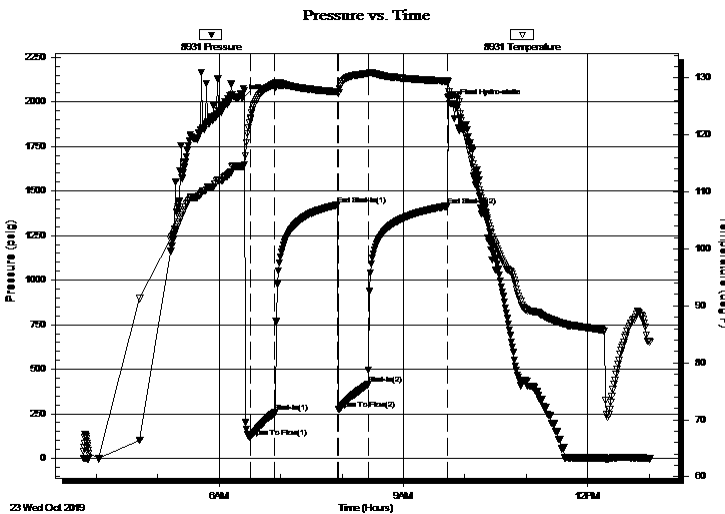
GENERAL INFORMATION:

Formation: **Swope**
 Deviated: No Whipstock: ft (KB)
 Test Type: Conventional Bottom Hole (Initial)
 Time Tool Opened: 06:30:23 Tester: Matt Smith
 Time Test Ended: 13:00:38 Unit No: 68
 Interval: **4177.00 ft (KB) To 4200.00 ft (KB) (TVD)** Reference Elevations: 1823.00 ft (KB)
 Total Depth: 4200.00 ft (KB) (TVD) 1811.00 ft (CF)
 Hole Diameter: 7.88 inches Hole Condition: Fair KB to GR/CF: 12.00 ft

Serial #: 8931 Inside
 Press@RunDepth: 416.63 psig @ 4178.00 ft (KB) Capacity: 8000.00 psig
 Start Date: 2019.10.23 End Date: 2019.10.23 Last Calib.: 2019.10.23
 Start Time: 03:47:28 End Time: 13:00:38 Time On Btm: 2019.10.23 @ 06:22:38
 Time Off Btm: 2019.10.23 @ 09:48:38

TEST COMMENT: IF: Strong Blow . B.O.B. in 45 secs. Built to 324.96".
 IS: Strong Blow . G.T.S. in Bleed Off. Built to 32.58".
 FF: Strong Blow . B.O.B. in 7 mins. (G.T.S.) T.S.T.M. Built to 77.52".
 FS: Strong Blow . Built to 16.42".

PRESSURE SUMMARY



| Time (Min.) | Pressure (psig) | Temp (deg F) | Annotation |
|-------------|-----------------|--------------|----------------------|
| 0 | 2019.55 | 114.47 | Initial Hydro-static |
| 8 | 121.20 | 122.80 | Open To Flow (1) |
| 32 | 258.13 | 128.95 | Shut-In(1) |
| 94 | 1422.16 | 127.56 | End Shut-In(1) |
| 95 | 275.73 | 127.43 | Open To Flow (2) |
| 123 | 416.63 | 130.79 | Shut-In(2) |
| 200 | 1414.93 | 129.45 | End Shut-In(2) |
| 206 | 1989.85 | 127.03 | Final Hydro-static |

Recovery

| Length (ft) | Description | Volume (bbl) |
|-------------|----------------------------|--------------|
| 123.00 | MCW 1% m 99% w | 0.94 |
| 156.00 | MCW 1% m 99% w | 2.19 |
| 256.00 | GOspecMCW 2% g 2% m 96% w | 3.59 |
| 193.00 | GOWCM 40% g 15% 5% w 40% m | 2.71 |
| 0.00 | GTS | 0.00 |

Gas Rates

| Choke (inches) | Pressure (psig) | Gas Rate (Mcf/d) |
|----------------|-----------------|------------------|
| | | |



**TRILOBITE
TESTING, INC.**

DRILL STEM TEST REPORT

FLUID SUMMARY

Val Energy Inc LLC
125 N Market St STE 1110
Wichita, Ks. 67202
ATTN: David Barker

31-30s-12w Barber Co. Ks.
Bouziden 1-31
Job Ticket: 64950 **DST#: 1**
Test Start: 2019.10.23 @ 03:47:23

Mud and Cushion Information

| | | | |
|----------------------------------|----------------------------|----------------------------|---------|
| Mud Type: Gel Chem | Cushion Type: | Oil API: | deg API |
| Mud Weight: 9.00 lb/gal | Cushion Length: ft | Water Salinity: 115000 ppm | |
| Viscosity: 46.00 sec/qt | Cushion Volume: bbl | | |
| Water Loss: 8.79 in ³ | Gas Cushion Type: | | |
| Resistivity: 3000.00 ohm.m | Gas Cushion Pressure: psig | | |
| Salinity: ppm | | | |
| Filter Cake: 0.20 inches | | | |

Recovery Information

Recovery Table

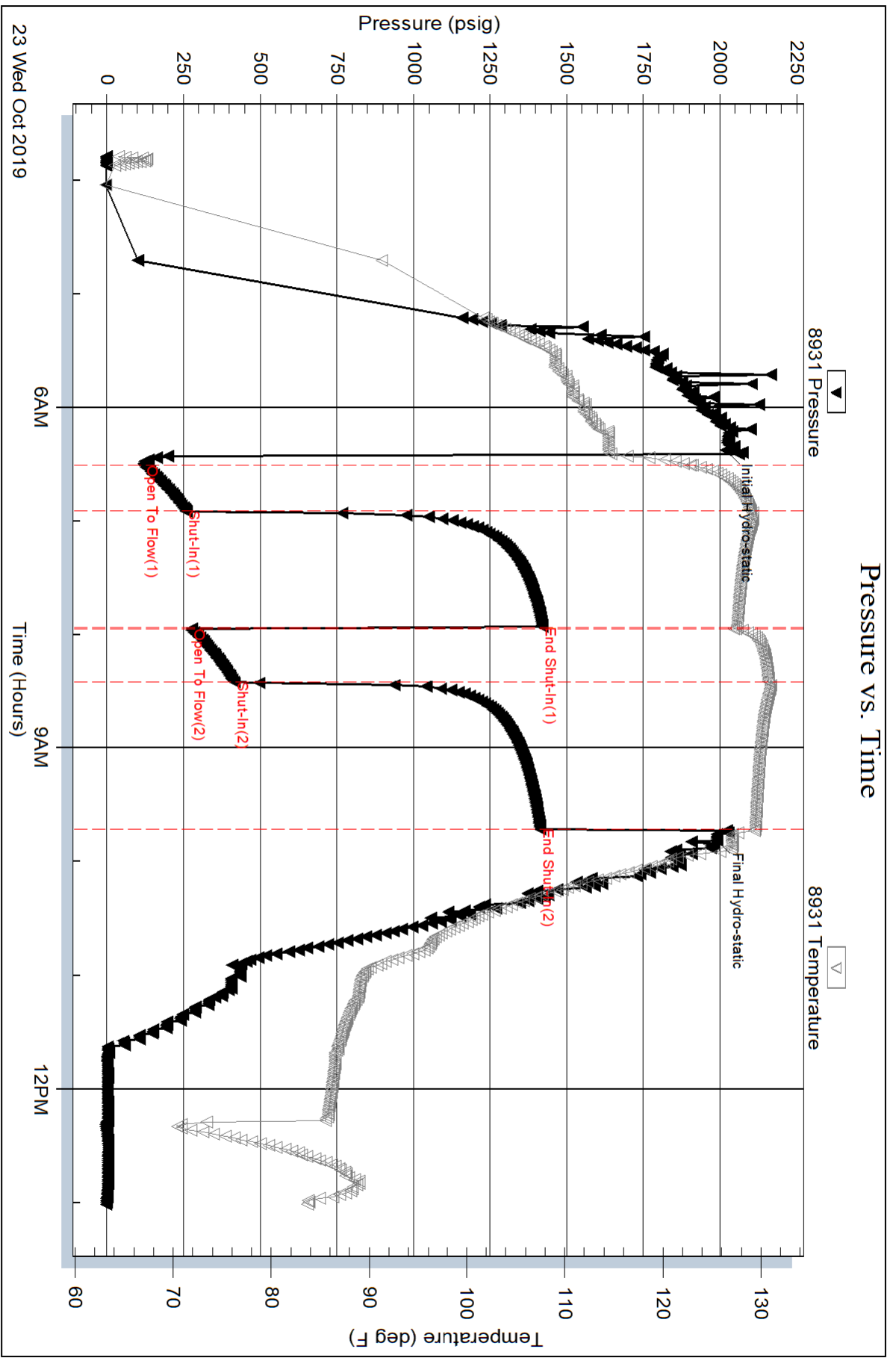
| Length ft | Description | Volume bbl |
|--------------|-------------------------|---------------|
| 123.00 | MCW 1%m 99%w | 0.943 |
| 156.00 | MCW 1%m 99%w | 2.188 |
| 256.00 | GOspecMCW 2%g 2%m 96%w | 3.591 |
| 193.00 | GOWCM 40%g 15% 5%w 40%m | 2.707 |
| 0.00 | GTS | 0.000 |

Total Length: 728.00 ft Total Volume: 9.429 bbl

Num Fluid Samples: 1 Num Gas Bombs: 1 Serial #: MASPRAATT

Laboratory Name: Laboratory Location:

Recovery Comments: RW .075 @ 70 Degrees = 115,000 Chlorides.



Serial #: 8788

Outside Val Energy Inc LLC

Bouziden 1-31

DST Test Number: 1

