



Musgrove

PETROLEUM CORPORATION
Clafin, Kansas

GEOLOGIST'S REPORT

DRILLING TIME AND SAMPLE LOG

COMPANY <u>Blueridge Petroleum, Corp</u>	ELEVATIONS
LEASE <u>Schlegel -French #1-30</u>	KB <u>2574</u>
FIELD <u>Unknown</u>	DF _____
LOCATION <u>NE-SE-SE-SE (465' FSL & 135' FEL)</u>	GL <u>2566</u>
SEC <u>30</u> TWSP <u>19S</u> RGE <u>25W</u>	Measurements Are All From <u>KB</u>
COUNTY <u>Ness</u> STATE <u>Kansas</u>	
CONTRACTOR <u>Discovery Drilling (Rig #2)</u>	CASING
SPUD <u>10/15/2019</u> COMP <u>10/25/2019</u>	SURFACE <u>5/8" @ 677'</u>
RTD <u>4655'</u> LTD <u>4658'</u>	PRODUCTION <u>5 1/2" @ 4656'</u>
MUD UP <u>3700</u> TYPE MUD <u>Chemical</u>	ELECTRICAL SURVEYS
	ELI WIRELINE; DIL/MEL, SON, CDL/NPL

SAMPLES SAVED FROM 3800' TO RTD

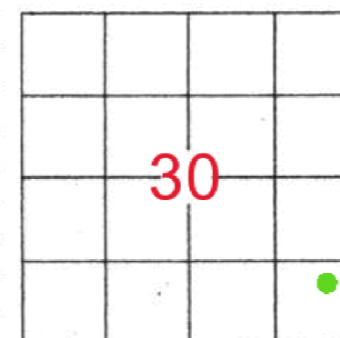
DRILLING TIME KEPT FROM 3800' TO RTD

SAMPLES EXAMINED FROM 3800' TO RTD

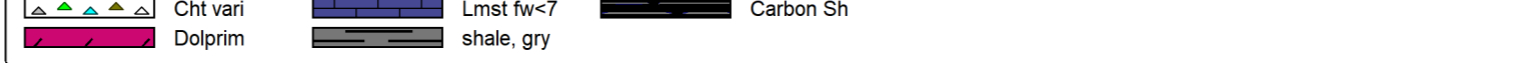
GEOLOGICAL SUPERVISION FROM 3950' TO RTD

GEOLOGIST ON WELL Jim Musgrove

FORMATION TOPS	LOG	SAMPLES
Anhydrite.	1825 +749	Miss 4544 -1970
B. Anhdrite	1865 +709	Miss. Dol. 4551 (-1977)
Heebner	3893 -1319	RTD 4655 (-2081)
Toronto	3913 -1339	LTD 4658 (-2084)
Lansing	3936 -1362	
BKC	4306 -1732	
Marmaton	4316 -1742	
Pawnee	4401 -1827	
FT. Scott	4457 -1883	
Cherokee	4480 -1906	



ROCK TYPES



ACCESSORIES

FOSSIL
 🪦 Oomoldic

OTHER SYMBOLS

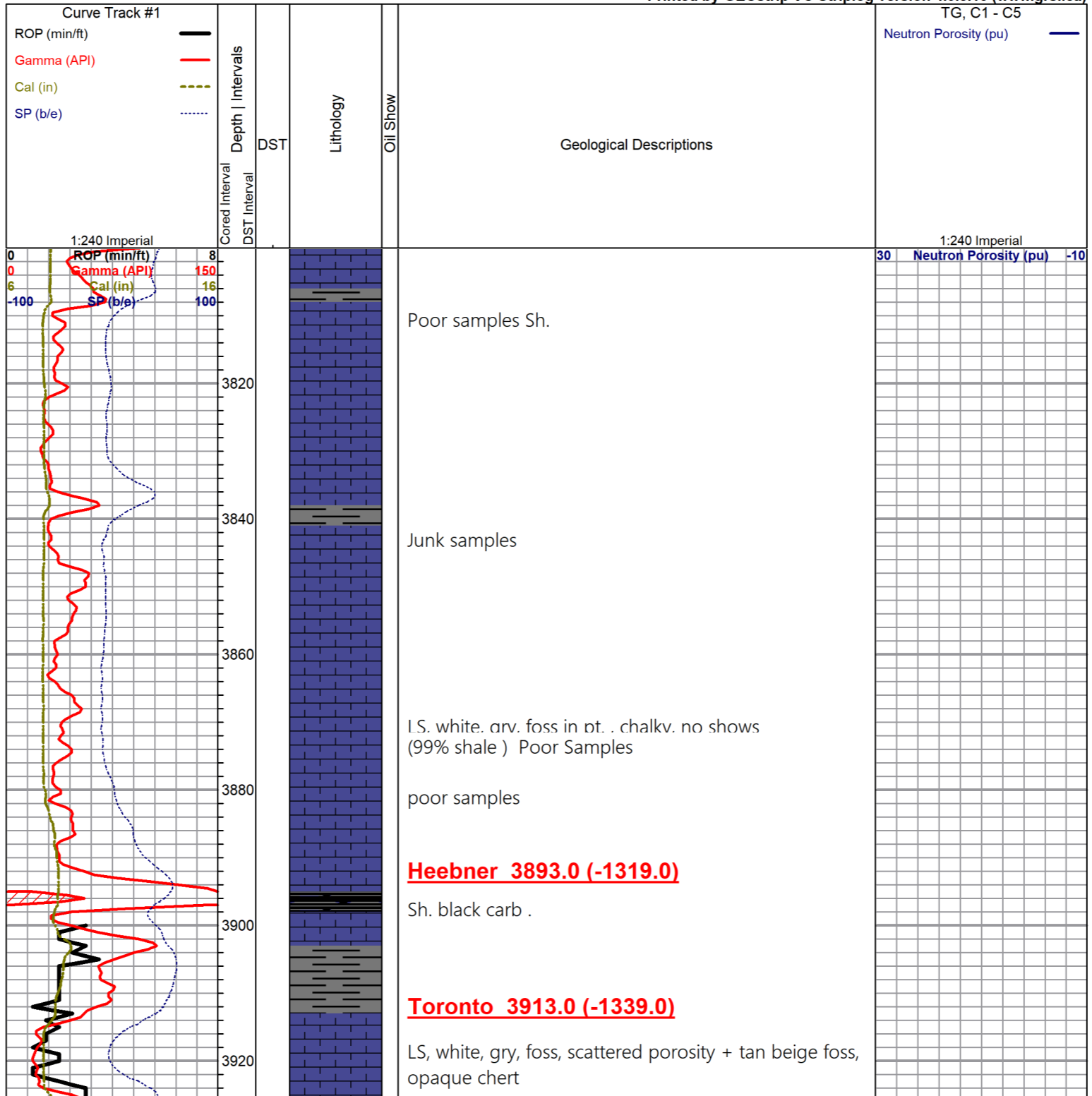
Oil Show

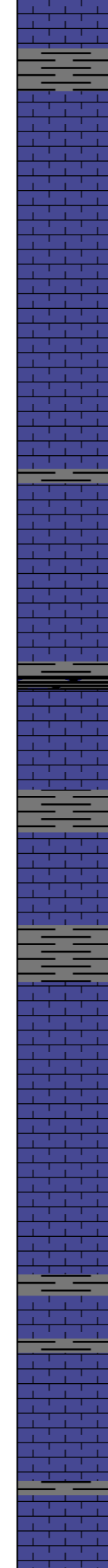
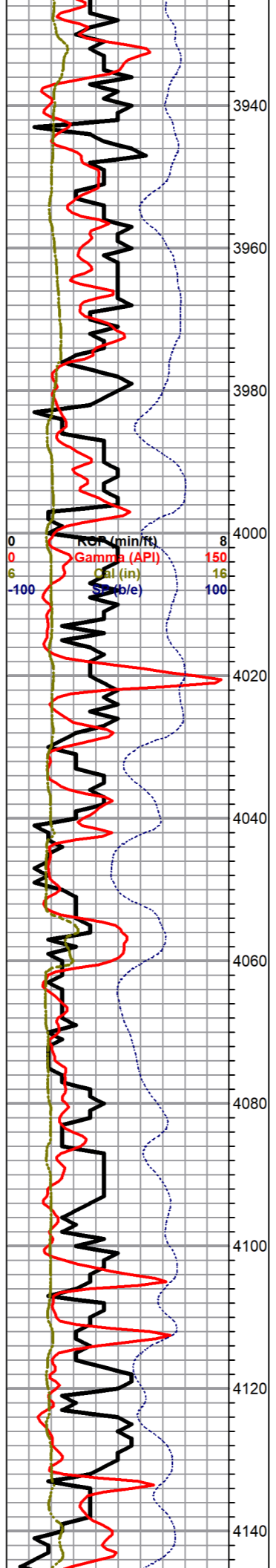
- Good Show
- Fair Show
- Poor Show
- Spotted or Trace
- Questionable Stn
- D Dead Oil Stn
- Fluorescence
- * Gas

DST

- DST Int
- DST alt
- Core
- tail pipe

Printed by GEOstrip VC Striplog version 4.0.8.15 (www.grsi.ca)





Lansing 3931.0 (-1357.0)

LS, white, fxl, foss, scattered porosity, tr. tan cherts, foss, opaque chert

LS, white, cream, fxl, gran in pt, poorly dev por.

LS, white, tan, fxl, gran. in pts, chalky, poorly developed

LS, white, tan, chalky, poorly developed, + white chert

LS, white, fxl, chalky, tan, chet

LS, gry, white, fxl, chalky, + tan / chert

Sh, black carb

LS, tan, gry, foss/ ool, chalky, in pt, tr. white, tan ool, chert

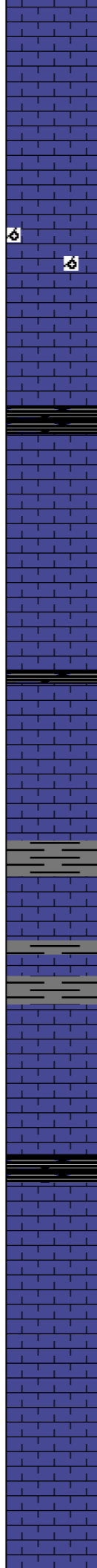
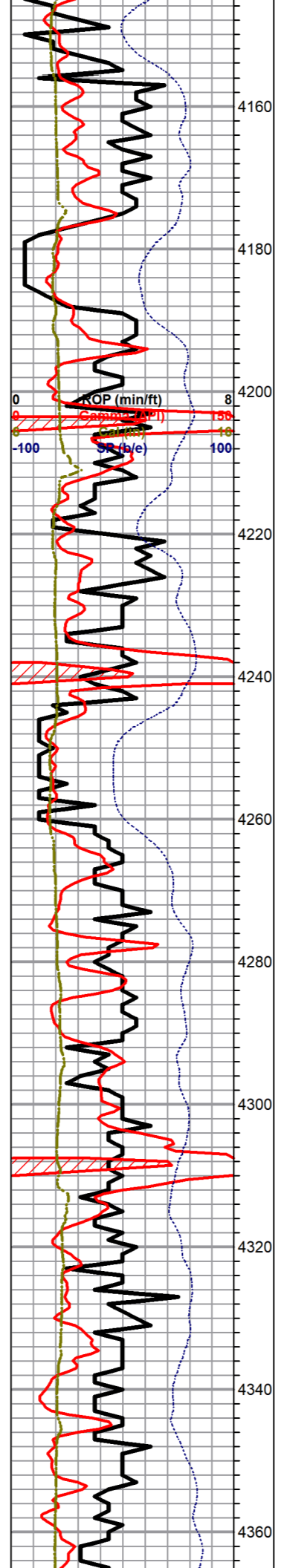
LS, a/a abd. white, gry, boney cherts

a/a

LS, tan, gry, highly foss, chalky, poor vis. porosity, no shows

LS, a/a , + gry white, boney chert foss/ opaque chert

30 Neutron Porosity (pu) -10



LS, tan, crm, suc. in part slightly dolomitic , few cherty
poor vis. porosity

LS, white, gry, ool, oom, sl. cherty, scattered porosity,
oom, porosity, no sfo, barren

Stark Sh 4200.0 (-1626.0)

Black carb sh.

LS, white, gry, tan, ool, oom, scattered porosity, white
ool, boney/ opaque chert

Black carb sh .

LS, white, gry, tan, ool, foss, scattered porosity, (barren)

LS, white, gry, chalky

(poor samples)
Tr. LS, white, f- med xln , foss, chalky

BKC 4304.0 (-1730.0)

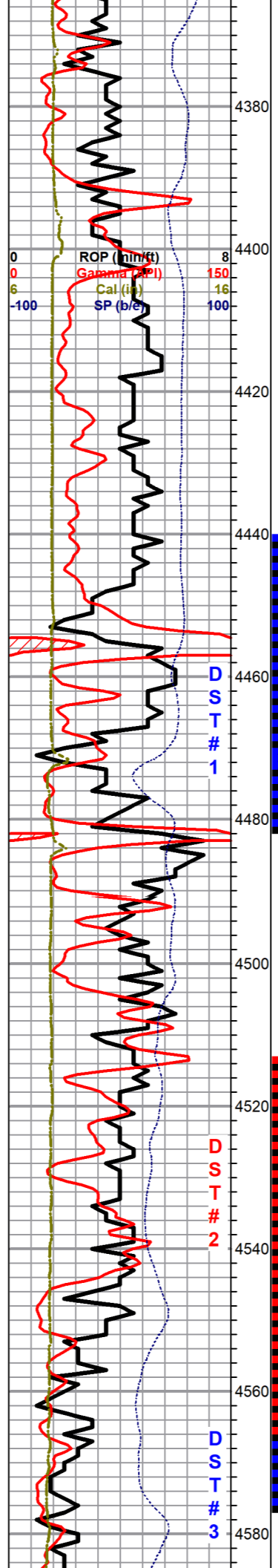
Sh, gry, green, gryish

Marmaton 4316.0 (-1742.0)

LS, white, cream, f- med xln, foss, slightly chalky, fair
porosity, no shows

LS, tan, gry, foss, sl. cherty/ chalky, no show

30 Neutron Porosity (pu) -10



LS, white, gry , chalky, no shows

DST # 1 4440-4480
30-30-45-60

1st Open:
Strong BOB 12 mins.

2nd Open:
BOB 3 mins.

Recovery:
750' GIP

20' SLOGCM
(20%G, 10%O, 70%M)

60' O&GCM
(30%G, 20%O, 50%M)

60' SLO&GCM
(30%G, 10%O, 60%M)

Pressures:
ISIP 1288 psi
FSIP 1294 psi
IFP 25-42 psi
FFP 50-79 psi
HSH 2213 -3179

Poor samples (90% shales)

Pawnee 4401.0 (-1827.0)

Poor Samples a/a

Poor samples as above

Sh, black carb

Ft. Scott 4453.0 (-1879.0)

LS, white, gry, fxl, few foss, poor vis. porosity, no shows

DST#2 4513-4565
45-45-60-60

LS, white, tan, ool, few cherty tr. brn stain , tr. fo , ft. odor

Cherokee Sh 4489.0 (-1915.0)

Slug black sh

1st Open:
Weak

Recovery:
10' clean oil

LS, white, gry, fxl, chalky, poor vis. porosity, no shows

40' HOCCM
(30%O, 70%M)

Tr. blk / gry sh.

Pressures:
ISIP 808 psi
FSIP 832 psi
IFP 20-29 psi
FFP 32-39 ps
HSH 2236-22

LS, gry, foss, ool, chalky, poor vis. porosity, no shows

Tr white, gry yellow chert,
LS, white, gry, chalky, dense

Miss 4541.0 (-1967.0)

DST# 3 4565-4575
45-45-60-60

Dol. tan, buff, fxl, few cherty, scattered porosity, brn/
golden brn stain sfo, good odor

1st Open:
Strong blow
(BOB 21 mins.

Dol., a/a slightly cherty, fr. brn stain ,/sat. sfo, odor

2nd Open:
Strong blow:
BOB 52 mins.

Dol. a/a, fair stain /sat., fr-good sfo, good odor

Recovery:
126' GIP

