



TRILOBITE TESTING, INC.

DRILL STEM TEST REPORT

Blake Exploration

17-14S-32W Logan,KS

PO Box 150
Bogue, KS 67625

Nuss #1

Job Ticket: 66105

DST#: 1

ATTN: Mike Davignon

Test Start: 2019.12.07 @ 00:45:00

GENERAL INFORMATION:

Formation: **LKC " E - F "**

Deviated: No Whipstock: ft (KB)

Time Tool Opened: 03:23:30

Time Test Ended: 08:25:00

Test Type: Conventional Bottom Hole (Initial)

Tester: Martine Salinas

Unit No: 82

Interval: **3875.00 ft (KB) To 3922.00 ft (KB) (TVD)**

Reference Elevations: 2824.00 ft (KB)

Total Depth: 3922.00 ft (KB) (TVD)

2816.00 ft (CF)

Hole Diameter: 7.88 inches Hole Condition: Good

KB to GR/CF: 8.00 ft

Serial #: 8734

Outside

Press@RunDepth: 98.43 psig @ 3876.00 ft (KB)

Capacity: 8000.00 psig

Start Date: 2019.12.07

End Date: 2019.12.07

Last Calib.: 2019.12.07

Start Time: 00:45:01

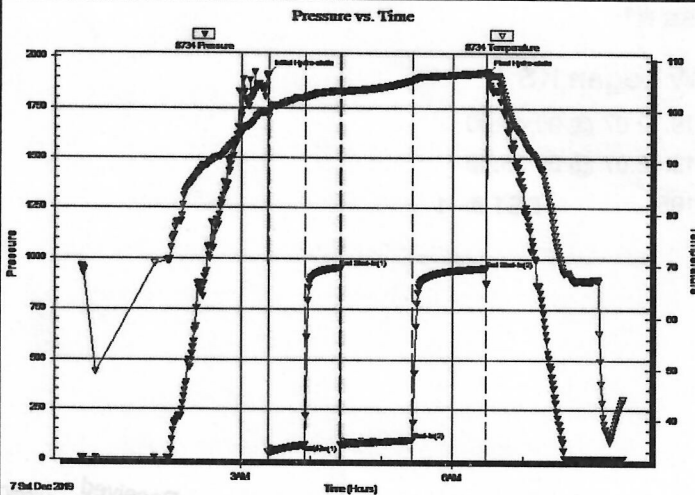
End Time: 08:25:00

Time On Btm: 2019.12.07 @ 03:23:20

Time Off Btm: 2019.12.07 @ 06:29:00

TEST COMMENT: 30-IF-Surface blow built to 3 3/4"
30-ISI-Surface blow back
60-FF-Surface blow built to 4 1/2"
60-FSI-No blow back

PRESSURE SUMMARY



Time (Min.)	Pressure (psig)	Temp (deg F)	Annotation
0	1912.61	99.92	Initial Hydro-static
1	36.72	98.86	Open To Flow (1)
32	73.32	102.67	Shut-In(1)
61	957.47	104.06	End Shut-In(1)
62	75.52	103.72	Open To Flow (2)
123	98.43	106.01	Shut-In(2)
185	954.47	107.55	End Shut-In(2)
186	1921.59	107.75	Final Hydro-static

Recovery

Length (ft)	Description	Volume (bbl)
120.00	WCM 23%W, 77%M	0.60
50.00	Mud w/ Oil scum 1%O, 99%M	0.70
0.00	Heavy oil spots in tool	0.00

Gas Rates

Choke (inches)	Pressure (psig)	Gas Rate (Mcf/d)



TRILOBITE TESTING, INC.

DRILL STEM TEST REPORT

Blake Exploration

17-14S-32W Logan,KS

PO Box 150
Bogue, KS 67625

Nuss #1

Job Ticket: 66105

DST#: 1

ATTN: Mike Davignon

Test Start: 2019.12.07 @ 00:45:00

GENERAL INFORMATION:

Formation: **LKC " E - F "**

Deviated: No Whipstock: ft (KB)

Time Tool Opened: 03:23:30

Time Test Ended: 08:25:00

Test Type: Conventional Bottom Hole (Initial)

Tester: Martine Salinas

Unit No: 82

Interval: **3875.00 ft (KB) To 3922.00 ft (KB) (TVD)**

Reference Elevations: 2824.00 ft (KB)

Total Depth: 3922.00 ft (KB) (TVD)

2816.00 ft (CF)

Hole Diameter: 7.88 inches Hole Condition: Good

KB to GR/CF: 8.00 ft

Serial #: 8734 Outside

Press@RunDepth: 98.43 psig @ 3876.00 ft (KB)

Capacity: 8000.00 psig

Start Date: 2019.12.07

End Date: 2019.12.07

Last Calib.: 2019.12.07

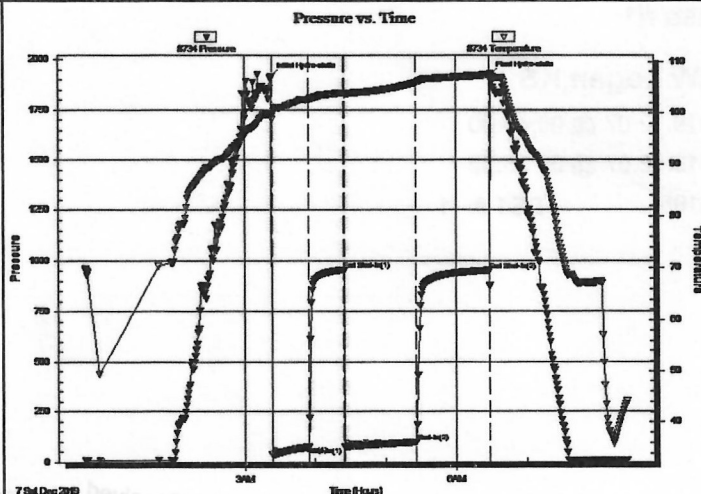
Start Time: 00:45:01

End Time: 08:25:00

Time On Btm: 2019.12.07 @ 03:23:20

Time Off Btm: 2019.12.07 @ 06:29:00

TEST COMMENT: 30-IF-Surface blow built to 3 3/4"
30-ISI-Surface blow back
60-FF-Surface blow built to 4 1/2"
60-FSI-No blow back



PRESSURE SUMMARY

Time (Min.)	Pressure (psig)	Temp (deg F)	Annotation
0	1912.61	99.92	Initial Hydro-static
1	36.72	98.86	Open To Flow (1)
32	73.32	102.67	Shut-In(1)
61	957.47	104.06	End Shut-In(1)
62	75.52	103.72	Open To Flow (2)
123	98.43	106.01	Shut-In(2)
185	954.47	107.55	End Shut-In(2)
186	1921.59	107.75	Final Hydro-static

Recovery

Length (ft)	Description	Volume (bbl)
120.00	WCM 23%W, 77%M	0.60
50.00	Mud w/ Oil scum 1%O, 99%M	0.70
0.00	Heavy oil spots in tool	0.00

Gas Rates

	Choke (inches)	Pressure (psig)	Gas Rate (Mcf/d)



**TRILOBITE
TESTING, INC.**

DRILL STEM TEST REPORT

TOOL DIAGRAM

Blake Exploration

17-14S-32W Logan,KS

PO Box 150
Bogue, KS 67625

Nuss #1

Job Ticket: 66105

DST#: 1

ATTN: Mike Davignon

Test Start: 2019.12.07 @ 00:45:00

Tool Information

Drill Pipe:	Length: 3759.00 ft	Diameter: 3.80 inches	Volume: 52.73 bbl	Tool Weight: 2500.00 lb
Heavy Wt. Pipe:	Length: 0.00 ft	Diameter: 2.75 inches	Volume: 0.00 bbl	Weight set on Packer: 25000.00 lb
Drill Collar:	Length: 119.00 ft	Diameter: 2.25 inches	Volume: 0.59 bbl	Weight to Pull Loose: 56000.00 lb
			<u>Total Volume: 53.32 bbl</u>	Tool Chased 0.00 ft
Drill Pipe Above KB:	23.00 ft			String Weight: Initial 52000.00 lb
Depth to Top Packer:	3875.00 ft			Final 52000.00 lb
Depth to Bottom Packer:	ft			
Interval between Packers:	47.00 ft			
Tool Length:	67.00 ft			
Number of Packers:	2	Diameter: 6.75 inches		

Tool Comments:

Tool Description	Length (ft)	Serial No.	Position	Depth (ft)	Accum. Lengths
Shut In Tool	5.00			3860.00	
Hydraulic tool	5.00	1113		3865.00	
Packer	5.00			3870.00	20.00 Bottom Of Top Packer
Packer	5.00			3875.00	
Stubb	1.00			3876.00	
Recorder	0.00	8959	Inside	3876.00	
Recorder	0.00	8734	Outside	3876.00	
Perforations	7.00			3883.00	
Change Over Sub	1.00			3884.00	
Drill Pipe	32.00			3916.00	
Change Over Sub	1.00			3917.00	
Bullnose	5.00			3922.00	47.00 Bottom Packers & Anchor

Total Tool Length: 67.00



**TRILOBITE
TESTING, INC.**

DRILL STEM TEST REPORT

FLUID SUMMARY

Blake Exploration

17-14S-32W Logan,KS

PO Box 150
Bogue, KS 67625

Nuss #1

Job Ticket: 66105

DST#: 1

ATTN: Mike Davignon

Test Start: 2019.12.07 @ 00:45:00

Mud and Cushion Information

Mud Type: Gel Chem
Mud Weight: 9.00 lb/gal
Viscosity: 60.00 sec/qt
Water Loss: 6.39 in³
Resistivity: ohm.m
Salinity: 4300.00 ppm
Filter Cake: 2.00 inches

Cushion Type:
Cushion Length: ft
Cushion Volume: bbl
Gas Cushion Type:
Gas Cushion Pressure: psig

Oil API: deg API
Water Salinity: 36000 ppm

Recovery Information

Recovery Table

Length ft	Description	Volume bbl
120.00	WCM 23%W, 77%M	0.599
50.00	Mud w/ Oil scum 1%O, 99%M	0.701
0.00	Heavy oil spots in tool	0.000

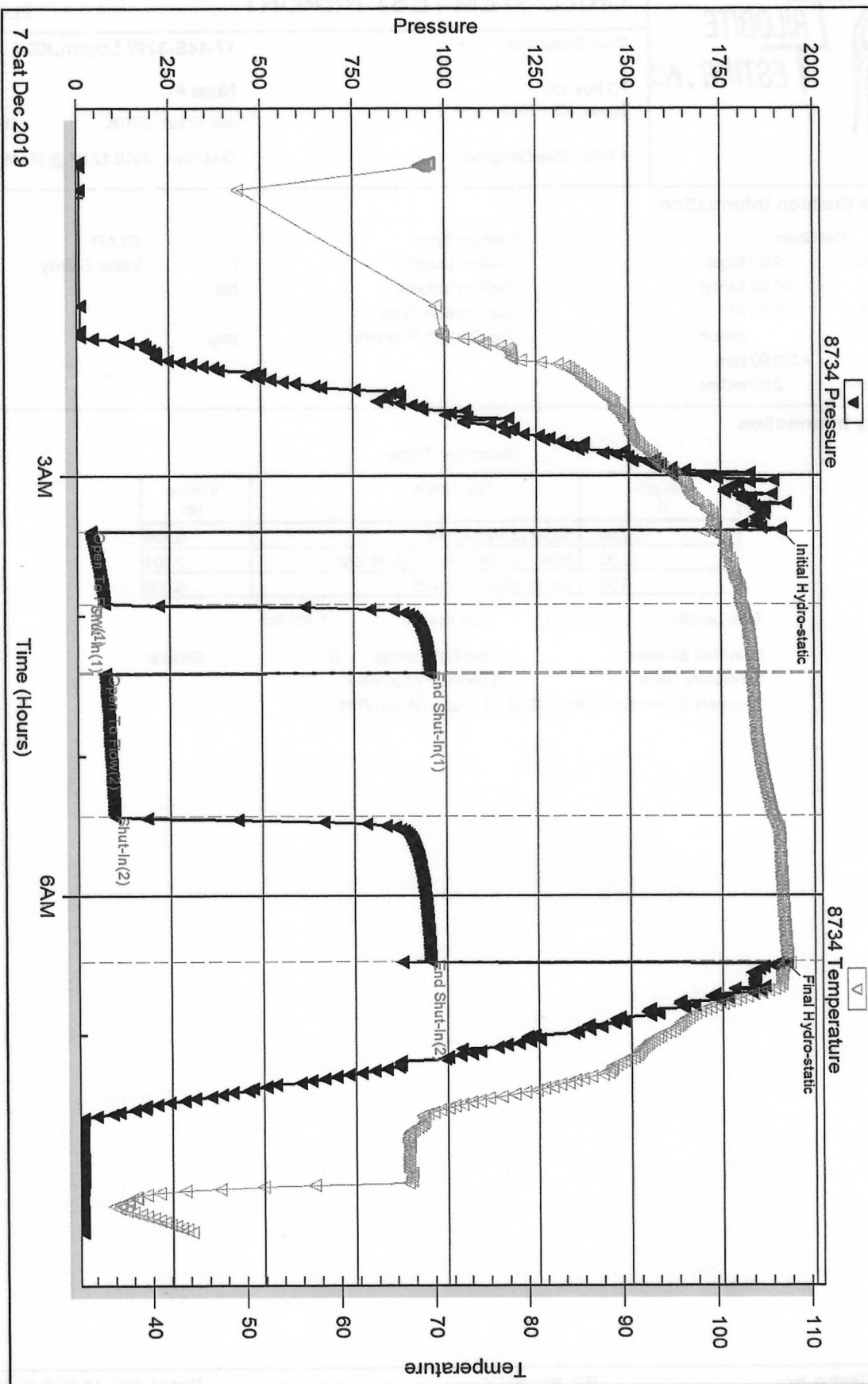
Total Length: 170.00 ft Total Volume: 1.300 bbl

Num Fluid Samples: 0 Num Gas Bombs: 0 Serial #:

Laboratory Name: Laboratory Location:

Recovery Comments: RW= .375 @ 39 degs = 36,000 PPM

Pressure vs. Time



7 Sat Dec 2019

3AM

Time (Hours)

6AM

Serial #: 8959

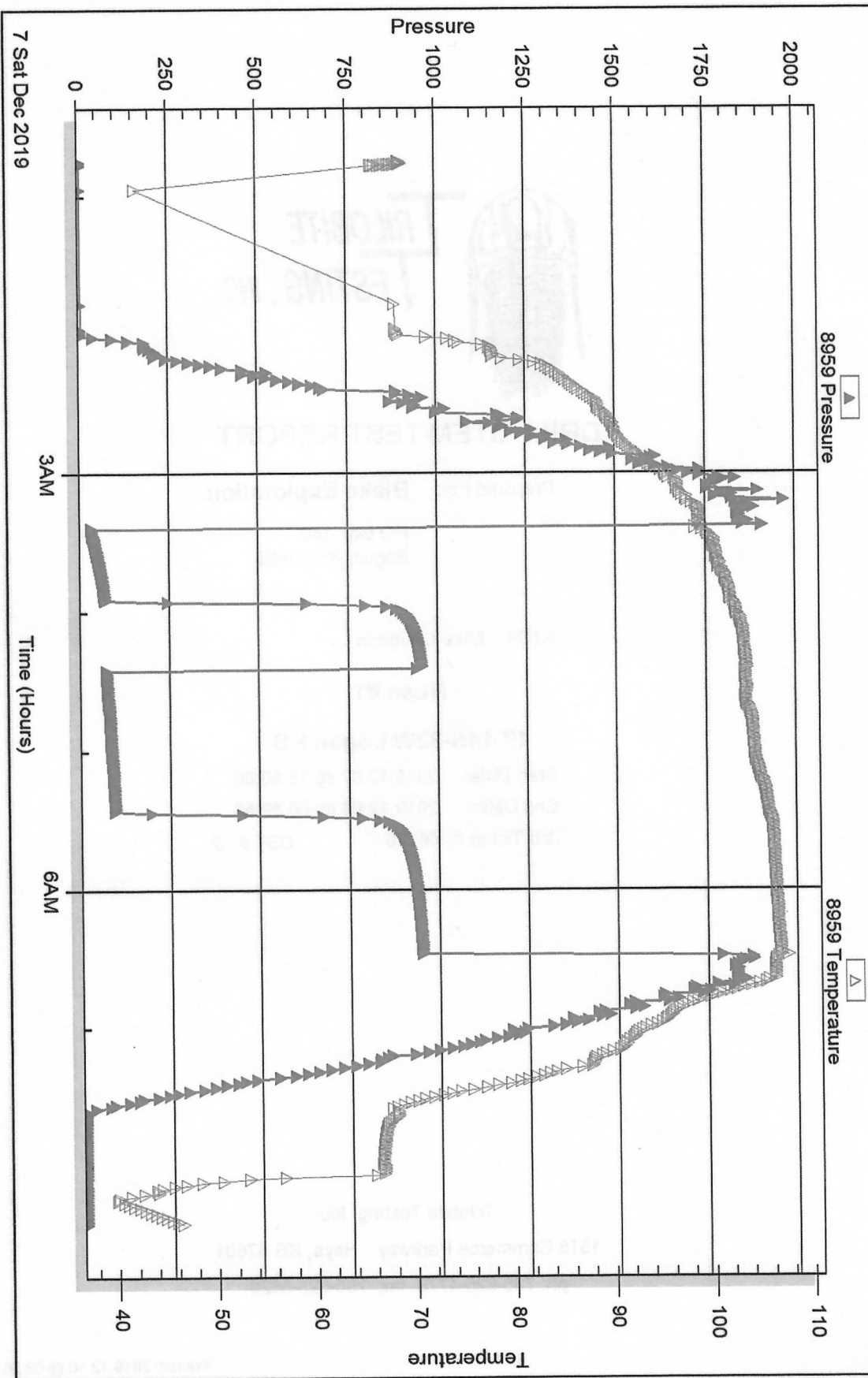
Inside

Blake Exploration

Nuss #1

DST Test Number: 1

Pressure vs. Time





**TRILOBITE
TESTING, INC.**

DRILL STEM TEST REPORT

Blake Exploration

17-14S-32W Logan,KS

PO Box 150
Bogue, KS 67625

Nuss #1

Job Ticket: 66106

DST#: 2

ATTN: Mike Davignon

Test Start: 2019.12.07 @ 18:50:00

GENERAL INFORMATION:

Formation: **LKC " H "**

Deviated: No Whipstock: ft (KB)

Time Tool Opened: 20:38:40

Time Test Ended: 00:39:50

Test Type: Conventional Bottom Hole (Reset)

Tester: Martine Salinas

Unit No: 82

Interval: **3970.00 ft (KB) To 4010.00 ft (KB) (TVD)**

Reference Elevations: 2824.00 ft (KB)

Total Depth: 4010.00 ft (KB) (TVD)

2816.00 ft (CF)

Hole Diameter: 7.88 inches Hole Condition: Good

KB to GR/CF: 8.00 ft

Serial #: 8734 Outside

Press@RunDepth: 143.94 psig @ 3971.00 ft (KB)

Capacity: 8000.00 psig

Start Date: 2019.12.07

End Date: 2019.12.08

Last Calib.: 2019.12.08

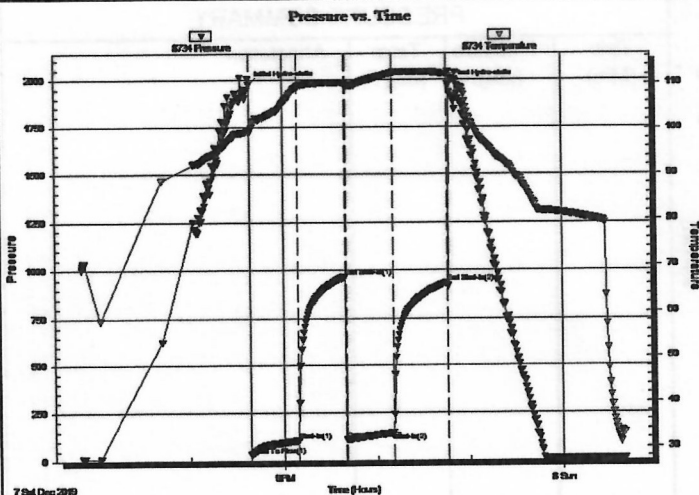
Start Time: 18:50:01

End Time: 00:39:50

Time On Btm: 2019.12.07 @ 20:38:20

Time Off Btm: 2019.12.07 @ 22:46:50

TEST COMMENT: 30-IF-1/4" blow built to 10 3/4"
30-ISI-No blow back
30-FF-Surface blow built to 7 1/2"
30-FSI-No blow back



PRESSURE SUMMARY

Time (Min.)	Pressure (psig)	Temp (deg F)	Annotation
0	1971.58	99.59	Initial Hydro-static
1	31.74	99.00	Open To Flow (1)
32	103.37	109.28	Shut-In(1)
62	967.71	110.10	End Shut-In(1)
62	108.34	109.76	Open To Flow (2)
93	143.94	112.29	Shut-In(2)
128	935.60	112.10	End Shut-In(2)
129	1970.79	112.43	Final Hydro-static

Recovery

Length (ft)	Description	Volume (bbl)
210.00	MCW w /oil scum 33%M, 67%W	1.86

* Recovery from multiple tests

Gas Rates

	Choke (inches)	Pressure (psig)	Gas Rate (Mcf/d)



**TRILOBITE
TESTING, INC.**

DRILL STEM TEST REPORT

TOOL DIAGRAM

Blake Exploration

17-14S-32W Logan,KS

PO Box 150
Bogue, KS 67625

Nuss #1

Job Ticket: 66106

DST#: 2

ATTN: Mike Davignon

Test Start: 2019.12.07 @ 18:50:00

Tool Information

Drill Pipe:	Length: 3854.00 ft	Diameter: 3.80 inches	Volume: 54.06 bbl	Tool Weight:	2500.00 lb
Heavy Wt. Pipe:	Length: 0.00 ft	Diameter: 2.75 inches	Volume: 0.00 bbl	Weight set on Packer:	25000.00 lb
Drill Collar:	Length: 119.00 ft	Diameter: 2.25 inches	Volume: 0.59 bbl	Weight to Pull Loose:	56000.00 lb
			<u>Total Volume: 54.65 bbl</u>	Tool Chased	0.00 ft
Drill Pipe Above KB:	23.00 ft			String Weight: Initial	52000.00 lb
Depth to Top Packer:	3970.00 ft			Final	52000.00 lb
Depth to Bottom Packer:	ft				
Interval between Packers:	40.00 ft				
Tool Length:	60.00 ft				
Number of Packers:	2	Diameter:	6.75 inches		
Tool Comments:					

Tool Description	Length (ft)	Serial No.	Position	Depth (ft)	Accum. Lengths
------------------	-------------	------------	----------	------------	----------------

Shut In Tool	5.00			3955.00	
Hydraulic tool	5.00	1113		3960.00	
Packer	5.00			3965.00	20.00 Bottom Of Top Packer
Packer	5.00			3970.00	
Stubb	1.00			3971.00	
Recorder	0.00	8959	Inside	3971.00	
Recorder	0.00	8734	Outside	3971.00	
Perforations	34.00			4005.00	
Bullnose	5.00			4010.00	40.00 Bottom Packers & Anchor
Total Tool Length:	60.00				



**TRILOBITE
TESTING, INC.**

DRILL STEM TEST REPORT

FLUID SUMMARY

Blake Exploration

17-14S-32W Logan,KS

PO Box 150
Bogue, KS 67625

Nuss #1

Job Ticket: 66106

DST#: 2

ATTN: Mike Davignon

Test Start: 2019.12.07 @ 18:50:00

Mud and Cushion Information

Mud Type: Gel Chem

Mud Weight: 9.00 lb/gal

Viscosity: 60.00 sec/qt

Water Loss: 6.39 in³

Resistivity: ohm.m

Salinity: 4400.00 ppm

Filter Cake: 2.00 inches

Cushion Type:

Cushion Length:

Cushion Volume:

Gas Cushion Type:

Gas Cushion Pressure:

ft

bbbl

psig

Oil API:

Water Salinity:

deg API

80000 ppm

Recovery Information

Recovery Table

Length ft	Description	Volume bbl
210.00	MCW w /oil scum 33%M, 67%W	1.862

Total Length: 210.00 ft Total Volume: 1.862 bbl

Num Fluid Samples: 0

Num Gas Bombs: 0

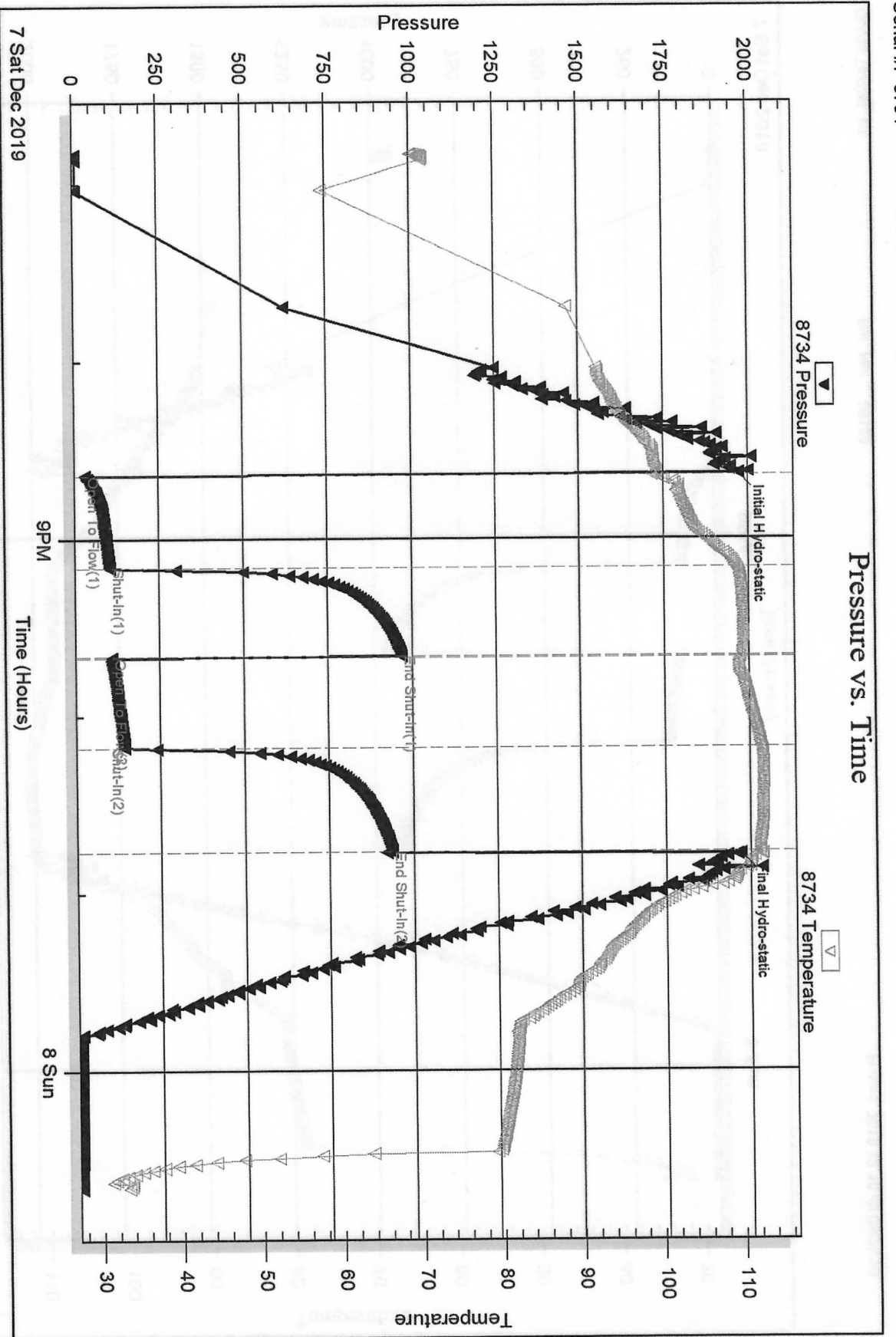
Serial #:

Laboratory Name:

Laboratory Location:

Recovery Comments: RW= .216 @ 34.0 degs = 80,000ppm

Pressure vs. Time



Serial #: 8959

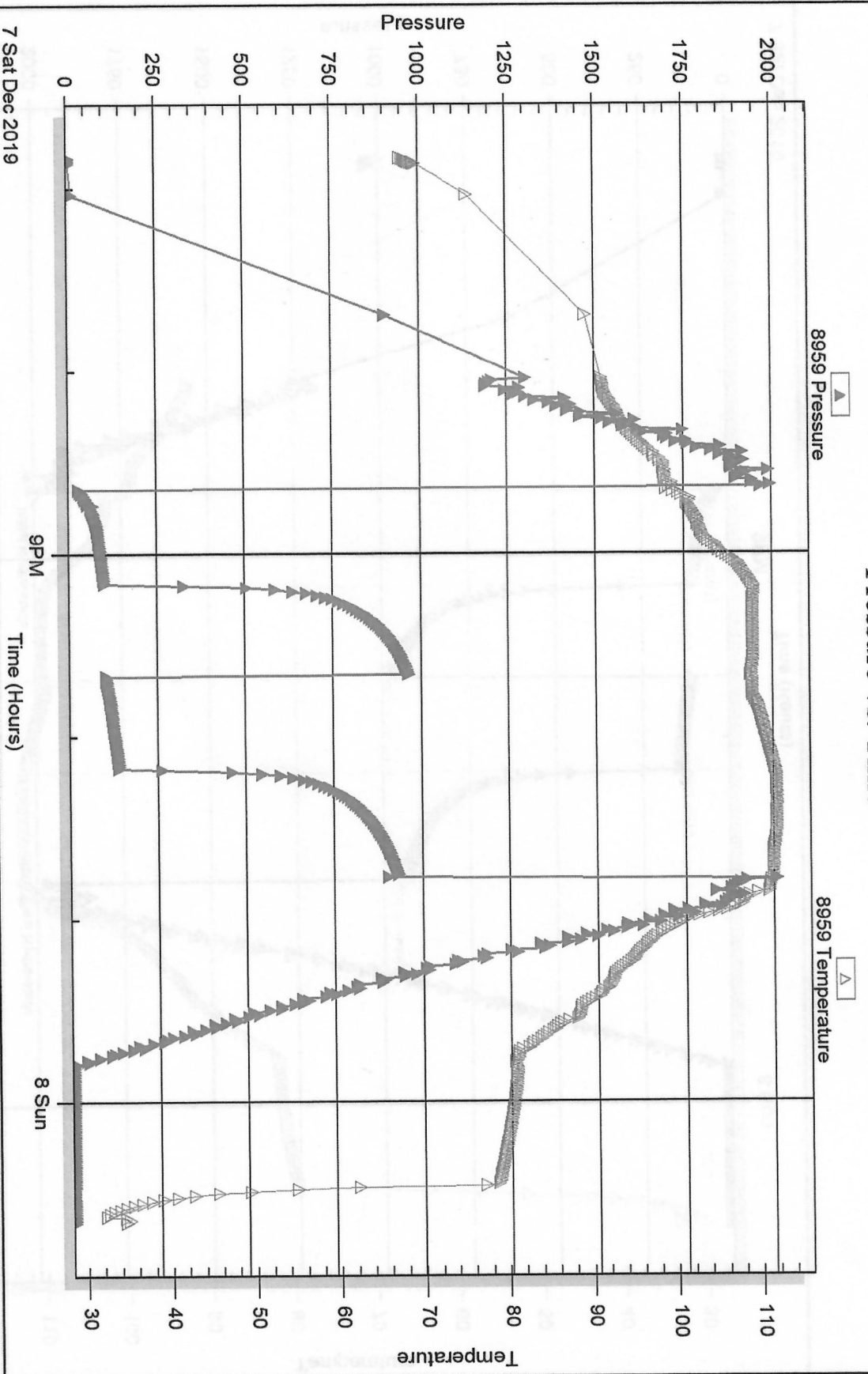
Inside

Blake Exploration

Nuss #1

DST Test Number: 2

Pressure vs. Time





TRILOBITE TESTING, INC.

DRILL STEM TEST REPORT

Blake Exploration

17-14S-32W Logan,KS

PO Box 150
Bogue, KS 67625

Nuss #1

Job Ticket: 66107

DST#: 3

ATTN: Mike Davignon

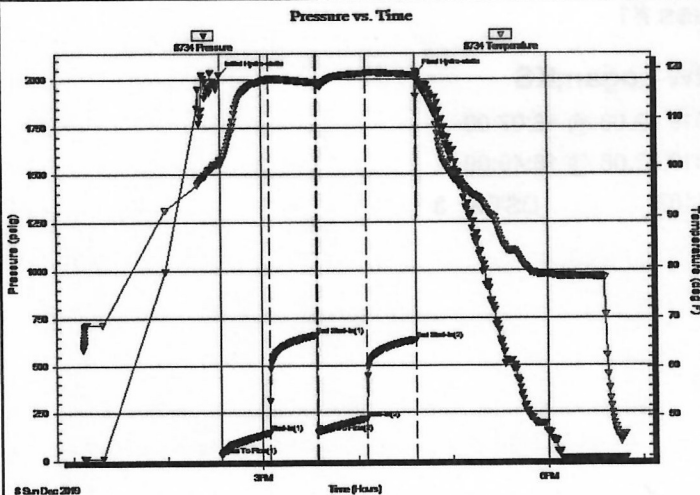
Test Start: 2019.12.08 @ 13:07:00

GENERAL INFORMATION:

Formation: **LKC " K "**
 Deviated: No Whipstock: ft (KB)
 Time Tool Opened: 14:33:50
 Time Test Ended: 18:49:09
 Test Type: Conventional Bottom Hole (Reset)
 Tester: Martine Salinas
 Unit No: 82
 Interval: **4065.00 ft (KB) To 4090.00 ft (KB) (TVD)**
 Total Depth: 4090.00 ft (KB) (TVD)
 Reference Elevations: 2824.00 ft (KB)
 2816.00 ft (CF)
 Hole Diameter: 7.88 inches Hole Condition: Good
 KB to GR/CF: 8.00 ft

Serial #: 8734 Outside
 Press@RunDepth: 217.77 psig @ 4066.00 ft (KB) Capacity: 8000.00 psig
 Start Date: 2019.12.08 End Date: 2019.12.08 Last Calib.: 2019.12.08
 Start Time: 13:07:01 End Time: 18:49:10 Time On Btm: 2019.12.08 @ 14:33:40
 Time Off Btm: 2019.12.08 @ 16:38:10

TEST COMMENT: 30-IF- B.O.B(11inches) @ 14 mins (blow increased to 19")
 30-ISI-No blow back
 30-FF- B.O.B(11 inches) @ 22 mins (blow increased to 15 1/4")
 30-FSI-No blow back



PRESSURE SUMMARY

Time (Min.)	Pressure (psig)	Temp (deg F)	Annotation
0	2026.09	101.53	Initial Hydro-static
1	28.07	100.52	Open To Flow (1)
31	144.49	117.83	Shut-In(1)
61	659.30	117.19	End Shut-In(1)
61	146.93	116.92	Open To Flow (2)
92	217.77	119.06	Shut-In(2)
124	635.99	118.71	End Shut-In(2)
125	2033.72	118.34	Final Hydro-static

Recovery

Length (ft)	Description	Volume (bbl)
419.00	MCW w/Oil spots 13%M, 87%W	4.79
1.00	CO 100%O	0.01
0.00	Heavy oil in tool	0.00

* Recovery from multiple tests

Gas Rates

	Choke (inches)	Pressure (psig)	Gas Rate (Mcf/d)



**TRILOBITE
TESTING, INC.**

DRILL STEM TEST REPORT

TOOL DIAGRAM

Blake Exploration

17-14S-32W Logan,KS

PO Box 150
Bogue, KS 67625

Nuss #1

Job Ticket: 66107

DST#: 3

ATTN: Mike Davignon

Test Start: 2019.12.08 @ 13:07:00

Tool Information

Drill Pipe:	Length: 3947.00 ft	Diameter: 3.80 inches	Volume: 55.37 bbl	Tool Weight:	2500.00 lb
Heavy Wt. Pipe:	Length: 0.00 ft	Diameter: 2.75 inches	Volume: 0.00 bbl	Weight set on Packer:	25000.00 lb
Drill Collar:	Length: 119.00 ft	Diameter: 2.25 inches	Volume: 0.59 bbl	Weight to Pull Loose:	60000.00 lb
		Total Volume: 55.96 bbl		Tool Chased	0.00 ft
Drill Pipe Above KB:	21.00 ft			String Weight: Initial	55000.00 lb
Depth to Top Packer:	4065.00 ft			Final	56000.00 lb
Depth to Bottom Packer:	ft				
Interval between Packers:	25.00 ft				
Tool Length:	45.00 ft				
Number of Packers:	2	Diameter:	6.75 inches		

Tool Comments:

Tool Description	Length (ft)	Serial No.	Position	Depth (ft)	Accum. Lengths
------------------	-------------	------------	----------	------------	----------------

Shut In Tool	5.00			4050.00	
Hydraulic tool	5.00	1113		4055.00	
Packer	5.00			4060.00	20.00 Bottom Of Top Packer
Packer	5.00			4065.00	
Stubb	1.00			4066.00	
Recorder	0.00	8959	Inside	4066.00	
Recorder	0.00	8734	Outside	4066.00	
Perforations	19.00			4085.00	
Bullnose	5.00			4090.00	25.00 Bottom Packers & Anchor
Total Tool Length:	45.00				



**TRILOBITE
TESTING, INC.**

DRILL STEM TEST REPORT

FLUID SUMMARY

Blake Exploration

17-14S-32W Logan, KS

PO Box 150
Bogue, KS 67625

Nuss #1

Job Ticket: 66107

DST#: 3

ATTN: Mike Davignon

Test Start: 2019.12.08 @ 13:07:00

Mud and Cushion Information

Mud Type: Gel Chem
Mud Weight: 9.00 lb/gal
Viscosity: 58.00 sec/qt
Water Loss: 7.59 in³
Resistivity: ohm.m
Salinity: 9400.00 ppm
Filter Cake: 2.00 inches

Cushion Type:
Cushion Length: ft
Cushion Volume: bbl
Gas Cushion Type:
Gas Cushion Pressure: psig

Oil API: deg API
Water Salinity: 75000 ppm

Recovery Information

Recovery Table

Length ft	Description	Volume bbl
419.00	MCW w /Oil spots 13%M, 87%W	4.793
1.00	CO 100%O	0.014
0.00	Heavy oil in tool	0.000

Total Length: 420.00 ft Total Volume: 4.807 bbl

Num Fluid Samples: 0 Num Gas Bombs: 0 Serial #:

Laboratory Name: Laboratory Location:

Recovery Comments: RW= .165 @ 47 degs = 75,000 PPM
Not enough oil to catch gravity

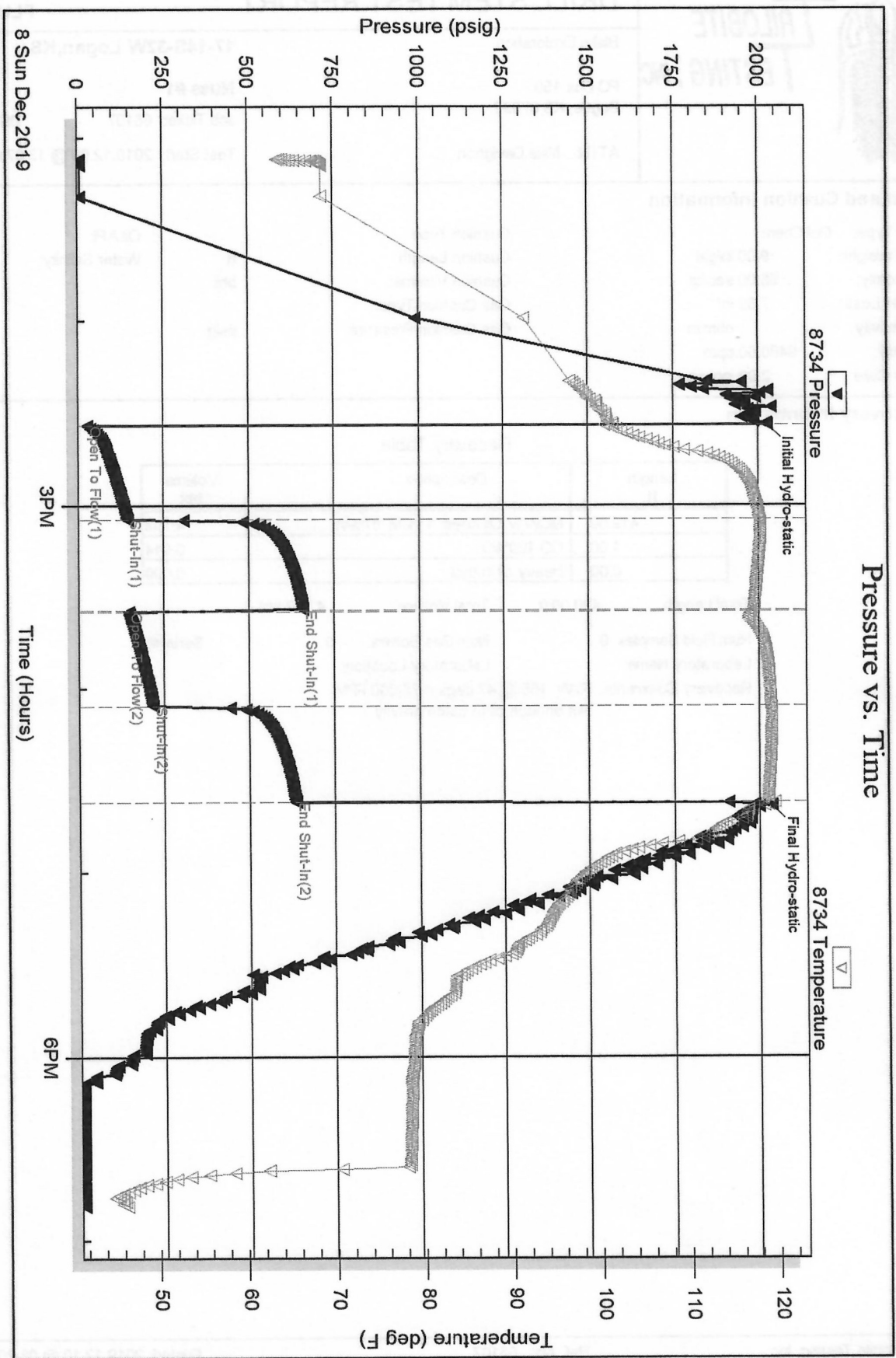
Serial #: 8734

Outside Blake Exploration

Nuss #1

DST Test Number: 3

Pressure vs. Time



Serial #: 8959

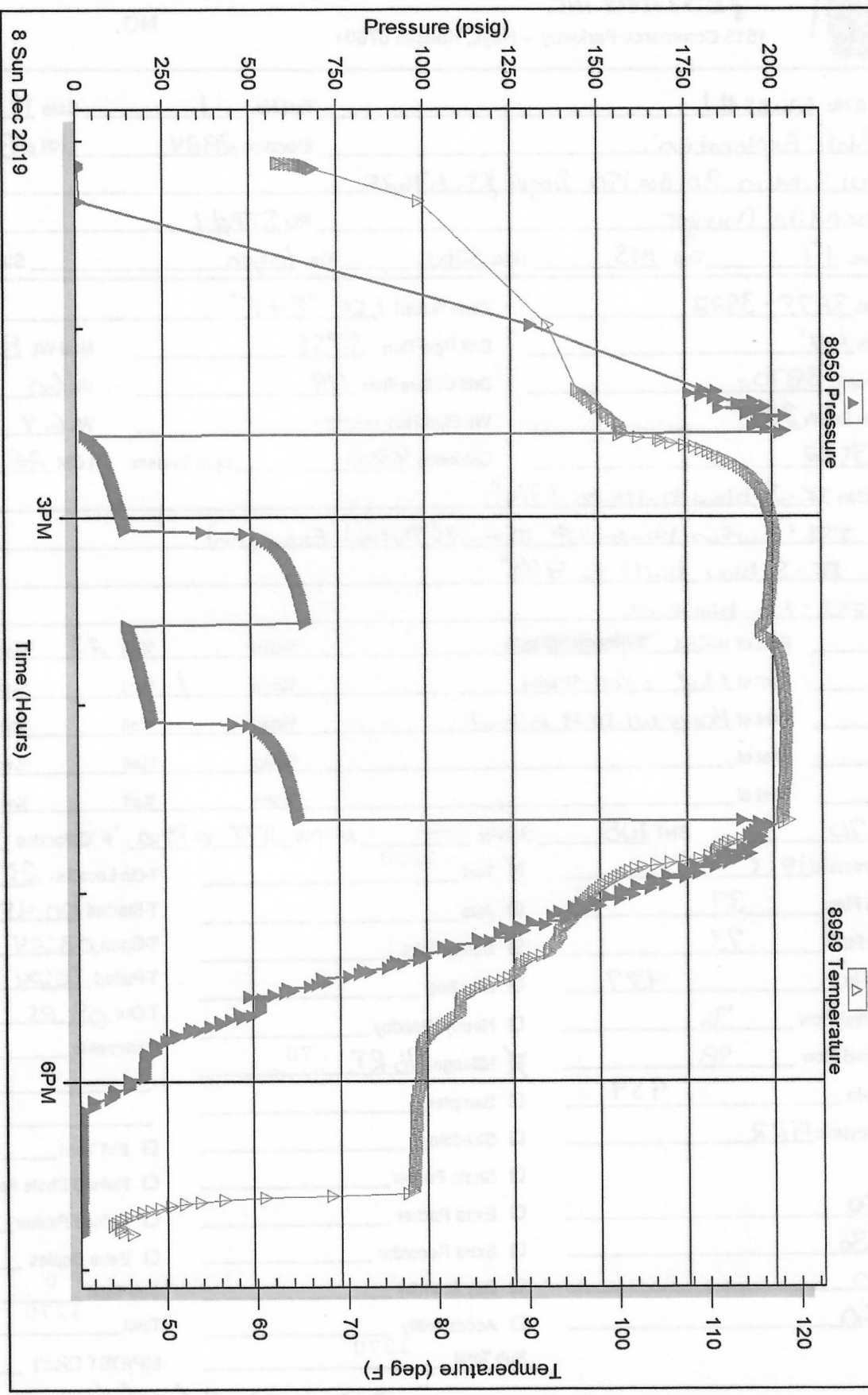
Inside

Blake Exploration

Nuss #1

DST Test Number: 3

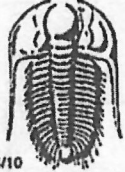
Pressure vs. Time



Triobite Testing, Inc

Ref. No: 66107

Printed: 2019.12.10 @ 08:20:10



TRILOBITE TESTING INC.

1515 Commerce Parkway • Hays, Kansas 67601

Test Ticket 66105

NO.

Well Name & No. Nuss #1 Test No. 1 Date 12-6-19
 Company Blake Exploration Elevation 2824 KB 2816 GL
 Address 201 S. Main P.O. Box 150 Bogue KS. 67625
 Co. Rep / Geo. Mike Daucyer Rig STP#1
 Location: Sec. 17 Twp 14S. Rge. 32W. Co. Logan State KS.

Interval Tested 3875-3922 Zone Tested LKC "E+F"
 Anchor Length 47' Drill Pipe Run 3759 Mud Wt. 8.6
 Top Packer Depth 3870 Drill Collars Run 119 Vis 60
 Bottom Packer Depth 3875 Wt. Pipe Run --- WL 6.4
 Total Depth 3922 Chlorides 4300 ppm System LCM 2#

Blow Description IF - S. blow built to 3 3/4"

ISI - Surface blowback @ 10 mins (Thermal Expansion)

FF - S. blow built to 4 1/2"

FSI - No blowback

Rec	Feet of	%gas	%oil	%water	%mud
<u>120</u>	<u>Feet of WEM up</u>		<u>23</u>	<u>77</u>	
<u>50</u>	<u>Feet of Mud w/oil scum.</u>		<u>1</u>	<u>99</u>	
<u>---</u>	<u>Feet of Heavy oil spots in tool</u>				
<u>---</u>	<u>Feet of</u>				
<u>---</u>	<u>Feet of</u>				

Rec Total 170 BHT 108 Gravity --- API RW .375 @ 39.0 °F Chlorides 36,000 ppm

(A) Initial Hydrostatic 1913 Test 1200 T-On Location 23:30
 (B) First Initial Flow 37 Jars --- T-Started 00:45
 (C) First Final Flow 73 Safety Joint --- T-Open 03:24
 (D) Initial Shut-In 957 Circ Sub --- T-Pulled 06:24
 (E) Second Initial Flow 76 Hourly Standby --- T-Out 08:25
 (F) Second Final Flow 98 Mileage 76 RT. 70 Comments ---
 (G) Final Shut-In 954 Sampler ---
 (H) Final Hydrostatic 1922 Straddle ---
 Shale Packer ---
 Extra Packer ---
 Extra Recorder ---
 Day Standby ---
 Accessibility ---
 Sub Total 1270

EM Tool ---
 Ruined Shale Packer ---
 Ruined Packer ---
 Extra Copies ---
 Sub Total 0
 Total 1270
 MP/DST Disc't ---

Initial Open 30
 Initial Shut-In 30
 Final Flow 60
 Final Shut-In 60

Approved By

Our Representative

Mark Johnson



TRILOBITE TESTING INC.

1515 Commerce Parkway • Hays, Kansas 67601

Test Ticket 66106

NO.

Well Name & No. Nuss #1 Test No. 2 Date 12-7-19
 Company Blake Exploration Elevation 3824 KB 2816 GL
 Address 201 S. Main P.O. Box 150 Bogue, KS 67625.
 Co. Rep / Geo. Mike Daveyer Rig STP#1
 Location: Sec. 17 Twp 14S. Rge. 32W. Co. Logan State KS.

Interval Tested 3970-4010 Zone Tested LKC "H"
 Anchor Length 40' Drill Pipe Run 3854 Mud Wt. 8.8
 Top Packer Depth 3965. Drill Collars Run 119 Vis 60
 Bottom Packer Depth 3970 Wt. Pipe Run — WL 6.4
 Total Depth 4010 Chlorides 4400 ppm System LCM 2H

Blow Description IF - 1/4" blow built to 10 3/4"
ISI - No blowback
FF - S. blow built to 7 1/2"
FSI - No blowback

Rec	Feet of	%gas	%oil	%water	%mud
<u>210</u>	<u>MCW oil seam</u>		<u>67</u>	<u>33</u>	
Rec	Feet of	%gas	%oil	%water	%mud
Rec	Feet of	%gas	%oil	%water	%mud
Rec	Feet of	%gas	%oil	%water	%mud
Rec	Feet of	%gas	%oil	%water	%mud

Rec Total 210 BHT 112 Gravity — API RW 216 @ 34.0 °F Chlorides 8000 ppm

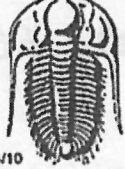
(A) Initial Hydrostatic 1972 Test 1300 T-On Location 18:30
 (B) First Initial Flow 32 Jars _____ T-Started 18:50
 (C) First Final Flow 103 Safety Joint _____ T-Open 20:39
 (D) Initial Shut-In 968 Circ Sub _____ T-Pulled 22:39
 (E) Second Initial Flow 108 Hourly Standby _____ T-Out 00:40
 (F) Second Final Flow 144 Mileage 76 RT 70 Comments _____
 (G) Final Shut-In 936 Sampler _____
 (H) Final Hydrostatic 1971 Straddle _____

Initial Open 30 Shale Packer _____ EM Tool _____
 Initial Shut-In 30 Extra Packer _____ Ruined Shale Packer _____
 Final Flow 30 Extra Recorder _____ Ruined Packer _____
 Final Shut-In 30 Day Standby _____ Sub Total 0
 Sub Total 1370 Accessibility _____ Total 1370
 MP/DST Disc't _____

Approved By

Our Representative

Mark Bl...



TRIOBITE TESTING INC.

1515 Commerce Parkway • Hays, Kansas 67601

Test Ticket

66107

NO.

Well Name & No. Nuss #1 Test No. 3 Date 12-8-19
 Company Blake Exploration Elevation 2824 KB 2816 GL
 Address 201 S. Main P.O. Box 150 Bogue, KS 67625
 Co. Rep / Geo. Mike Dayeyer Rig STP #1
 Location: Sec. 17 Twp 14S. Rge. 32W. Co. Logan State KS.

Interval Tested 4065-4090 Zone Tested LKC "K"
 Anchor Length 25 Drill Pipe Run 3947 Mud Wt. 9.0
 Top Packer Depth 4060 Drill Collars Run 119 Vis 58
 Bottom Packer Depth 4065 Wt. Pipe Run --- WL 7.6
 Total Depth 4090 Chlorides 9400 ppm System LCM #2

Blow Description IF - S. blow built to D.O.B (11 inches) @ 14 mins (blow increased to 19")
ISI - No blowback
FF - S. blow built to B.O.B (11 inches) @ 22 mins (blow increased to 15 1/4")
FSI - No blowback

Rec	Feet of	%gas	%oil	%water	%mud
<u>419</u>	<u>Feet of MCW w/oil spots.</u>		<u>87</u>	<u>13</u>	
<u>1</u>	<u>Feet of Co</u>	<u>100</u>			
	<u>Feet of Heavy oil in tool</u>				
	<u>Feet of</u>				
	<u>Feet of</u>				

Rec Total 420 BHT 118 Gravity --- API RW 165 @ 47.0 °F Chlorides 75,000 ppm

(A) Initial Hydrostatic 2026 Test 1300 T-On Location 13:05
 (B) First Initial Flow 28 Jars --- T-Started 13:07
 (C) First Final Flow 144 Safety Joint --- T-Open 14:34
 (D) Initial Shut-In 659 Circ Sub --- T-Pulled 16:34
 (E) Second Initial Flow 147 Hourly Standby --- T-Out 18:50
 (F) Second Final Flow 218 Mileage 70 RT x 2 70+70 Comments Not enough oil to
 (G) Final Shut-In 636 Sampler --- catch gravity
 (H) Final Hydrostatic 2034 Straddle --- Tools linded @ 04:00 12-9-19

Initial Open 30 Shale Packer --- Ruined Shale Packer ---
 Initial Shut-In 30 Extra Packer --- Ruined Packer ---
 Final Flow 30 Extra Recorder --- Extra Copies ---
 Final Shut-In 30 Day Standby --- Sub Total 0
 Sub Total 1440 Accessibility --- Total 1440
 Sub Total 1440 EM Tool --- MP/DST Disc't ---

Approved By

Our Representative

[Signature]